

Highway Maps Are Available

RALEIGH — This week, during National Highway Week, the commission will have its popular four-color official highway map back in stock and free on request to those who request it.

Since 1962 the mapping done by the State Highway Commission has been based on aerial photographs. Therefore, commission mapping has been a more scientific and accurate process. Before that, all maps were drawn to scale by hand.

In 1916 the State Highway Commission issued its first official state highway map. This was done to assist the motoring public. Since then the demand for maps has grown along with the size of the motoring public. Nowadays the commission distributes some 450,000 maps each year in answer to requests from the public.

Another service to motorists is a monthly bulletin on highway conditions. This lists all detours and all construction on state highways and interstate highways.

Schedules for all ferries in service in the state are also available on request.

The State Highway Commission also has available detailed maps of each county. These maps show cities and towns, all public roads by type from sec-

ondary to interstate, rail roads, streams and parks, as well as many other features.

Local Witnesses To Attend Event

About 35 delegates from the Central Unit Congregation of Jehovah's Witnesses here in Edenton will attend the three-day circuit convention in Raleigh the weekend of September 26-28, according to a statement made here today by Raymond Weathers, local presiding minister.

The meeting will be held at the J. W. Ligon High School on Lenoir Street in Raleigh, where an estimated 800 delegates from 19 congregations are expected. Sessions will begin Friday, September 26, at 6:45 P. M. and continue through Sunday, September 28, until 6 P. M.

The convention's theme: "Right Kind of Ministers," is centered around Paul's word to Timothy at I Tim. 4:6 NW. "... Giving these advices to the brothers you will be a right kind of minister of Christ Jesus, one nourished in the words of the faith and of the right teaching..."

The program will include talks round-table discussions and demonstrations showing how Christians today may become spiritual men, nourished in the words of the faith, sharing fully in declaring the good news of Jehovah's Kingdom under Christ.

The circuit's progress during the past six months will be reviewed and Saturday's program will include baptismal arrangements for newly dedicated Witnesses.

The featured event of this Raleigh seminar, sponsored by the Watchtower Bible and Tract Society, will be a public discourse Sunday, September 28, at 3 P. M. by C. G. Thompson, district supervisor. The subject of the address will be: "True Worship Versus the False."

The public is cordially invited to attend all sessions, Weathers said.

Lengthy Tunnels

Underground tunnels in the Canadian mining operations of International Nickel total some 750 miles.

"Super-Right" Quality U. S. D. A. INSPECTED-FRESH FRYERS

PRICES IN THIS AD EFFECTIVE THRU SATURDAY OCTOBER 4th.

PAN READY CUT UP FRYER

Lb. 32c

WITH WING-FRYER BREAST QUARTER

Lb. 38c

WITH BACK-FRYER LEG QUARTER

Lb. 34c

WITHOUT GIBLETS SPLIT FRYER

Lb. 36c



"SUPER-RIGHT" 14 to 18 Lb. Avg. SMOKED

HAM

"SUPER-RIGHT" QUALITY GOVERNMENT INSPECTED, LEAN — FRESHLY GROUND BEEF 55¢

"SUPER-RIGHT" QUALITY HEAVY CORN-FED BEEF — CUBED

CHUCK STEAK

Lb. 99c

"SUPER-RIGHT" ALL MEAT DINNER FRANKS

1-Lb. Pkg. 59c

"SUPER-RIGHT" HOT OR MILD—PURE PORK SAUSAGE

1-Lb. Roll 45c

"SUPER-RIGHT" QUALITY BEEF — WHOLE BEEF

HINDQUARTER

160 to 185 Lb. Avg.

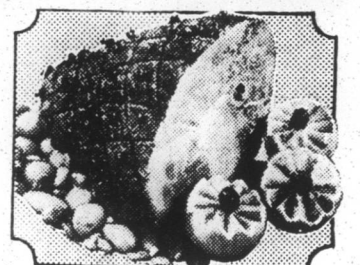
Lb. 59c

CAP'N JOHN'S FROZEN BREADED SHRIMP

10-Oz. Pkg. 79c

BULK PACKED—FROZEN FRIED OCEAN PERCH

Lb. 49c



• Butt Half Lb. 59c
• Shank Portion Lb. 45c
• Center Portion Lb. 95c
• 1/5 Ham Sliced Lb. 65c

Jane Parker Baked Foods!

JANE PARKER ENRICHED — WHITE

BREAD 4 99¢

REGULAR OR SANDWICH SLICED

1 1/2-Lb. Loaves

JANE PARKER FRESHLY BAKED APPLE PIE 22-Oz. Pkg. 39c

JANE PARKER LARGE ANGEL FOOD RING 17-Oz. Pkg. 45c

JANE PARKER SWEET POTATO OR PUMPKIN PIE 22-Oz. Pkg. 55c

JANE PARKER DANISH PECAN RING 9-Oz. Pkg. 39c

Fresh Fruits & Vegetables!

GREAT FOR SCHOOL LUNCHES — SWEET, JUICY JONATHAN

APPLES 8 89¢

LB. BAG



GREAT FOR SALADS OR SNACKS—RED HONEYDEW MELONS

Each 69c

SERVE MORNING, NOON OR NIGHT TOKAY GRAPES

2 Lbs. 35c

SERVE WITH COTTAGE CHEESE & LETTUCE BARTLETT PEARS

2 Lbs. 35c

U. S. NO ONE—ALL PURPOSE WHITE POTATOES

20 Lb. Bag 79c

15 MILLION CUPS OF A&P COFFEE WILL BE SERVED TODAY!

A SIZE AND STYLE TO SUIT EVERY TASTE—ALL GUARANTEED TO PLEASE YOU OR YOUR MONEY BACK

BUY FAMOUS QUALITY — MILD AND MELLOW

EIGHT O'CLOCK COFFEE 49¢ 3 \$1.45

1-Lb. Bag

Lb. Bag

• PURE, FRESH, REGULAR

A&P INSTANT COFFEE

10-Oz. Jar 99c

• A&P BRAND—BIG VALUE! 97% INSTANT

CAFFEIN FREE COFFEE

8-Oz. Jar \$1.09

• VAC. PACKED—A&P 100%

COLOMBIAN COFFEE

1-Lb. Can 79c

A&P SUPER-RIGHT

LUNCHEON MEAT 12-oz. Can 57¢

FOR SALE

23 WESTOVER HEIGHTS—4 Bed-room brick home. 1 1/2 baths, central heat, wall to wall carpeting. Corner lot... an excellent buy!

CAPE COLONY—This lot is the perfect location for that dream house on the water — 100 foot frontage — beautifully landscaped, wooded... who could ask for more!

WE HAVE THE HOUSE but not the Colonel — "Paradise" Country home with three bedrooms, 2 baths. Central heat. On seven acre lot.

402 NORTH BROAD—2-story brick home; three bedrooms, 1 1/2 baths... Most convenient location be it school or shopping.

ARROWHEAD BEACH—Deep waterfront lot on beautiful Chowan River. Ready for building.

ARROWHEAD BEACH—Three bedroom home in wooded section, two baths, completely equipped kitchen; furniture included. Central heat - perfect for year-round living.

103-103 1/2 E. CARTERET — Duplex, recently renovated; a good buy for rental property or owner-tenant occupancy — available immediately.

100-104 MOSELY STREET — Three small houses — priced to sell!

— CALL —

R. ELTON FOREHAND AGENCY

214 S. Broad St.

Phone 482-3314

BIZ 25-OZ. GIANT SIZE
WITHOUT COUPON 79c
WITH COUPON **49¢**
(LIMIT ONE COUPON PER EACH BOX PURCHASED)
THIS OFFER GOOD THRU OCTOBER 11, 1969
GOOD ONLY AT A&P FOOD STORES
CASH VALUE 1/20TH OF ONE CENT. GOV'T REGULATIONS APPLY 30c

IF UNABLE TO PURCHASE ADVERTISED ITEM... PLEASE REQUEST A RAIN CHECK

• MULTIPLE, WITH IRON OR CHILDREN'S CHEWY, A&P
VITAMINS 100 Ct. Btl. 68c
• SPECIAL LOW PRICED — DRIED
PINTO BEANS 4 2-Lb. Pkgs. 88c
• SPECIALLY PRICED — A&P
APPLE SAUCE 3 1-Lb. Cans 49c
• ANN PAGE RICH, RED TOMATO
KETCHUP 2 14-Oz. Btls. 39c 20-Oz. Btl. 29c

HELD OVER
by popular request!

IRONSTONE CHINA

ALL PIECES NOW ON SALE AT BONUS PRICES... COMPLETE YOUR SET THIS WEEK!

A&P

Mouth Wash 14-oz. Bottle 49¢

• LIMIT 2
CRISOO OIL 24-Oz. Btl. 48c
• LIMIT 2—A&P NON-DAIRY
COFFEE CREAMER 16-Oz. Jar 58c
• LIMIT 2—BRIGHT SAIL
LIQUID BLEACH 1/2-Gal. Btl. 32c
• LIMIT 2—POWDERED DETERGENT
TIDE 20-Oz. Pkg. 35c
• LIMIT 2—LIQUID BLEACH
CLOROX 1/2-Gal. Btl. 34c
• U.S.P. 5 GRAIN—A&P
ASPIRIN 100 Count Btl. 19c

20c A&P COUPON 20c
save 20c
WITH THIS COUPON WHEN YOU BUY A 4-OZ. JAR OF
MAXIM®
FREEZE-DRIED COFFEE
ONLY AT A&P
4 OZ. JAR ONLY 79¢
WITH COUPON THRU
20c ONE COUPON PER FAMILY • OFFER EXPIRES OCT. 11, 1969 20c

Frozen Food Buys!

G&W SAUSAGE OR PEPPERONI PIZZA 18-Oz. Pkg. 78c MORTON'S CREAM PIES 3 14-Oz. Pkgs. 88c

ALL FLAVORS—MARVEL BRAND

ICE MILK

39¢

1/2-GAL. CTN.

IN BUTTER SAUCE—NIBLET'S

GOLDEN CORN 4 10-Oz. Pkgs. \$1.00