

Former Edenton Star Leads Livingstone College

SALISBURY — Spirits were high in the Livingstone College Blue Bears' camp this week as Coach John D. Marshall's second-ranked team in the nation in total defense prepared to end its season on Saturday.

THE MEN OF AMERICA
By Elnora Regina Moya

It is the beginning and the end of the first and second world war, where men fought and gave their lives. These men gave their lives for us the people of America. These men are our soldiers, the brave men of America. We shouldn't be unthankful. We should be proud and thankful. And we should be proud to be an American. Our soldiers are the backbone of America. Let us stand up for our soldiers, the men of America. Let us help these men of America. And they will help us.

Livingstone, which had a 5-2 record going into its final game of the season, was fresh from an exciting 37-12 win over the Howard University Bisons a week ago.

Prior to the Howard game, they were third in the nation in total defense in the NCAA College Division. This week the Bears moved into second place in that category behind Alcorn A. and M.

Tri-Captain Sylvester Sutton of Edenton, N. C., is one of the big reasons for Bear successes thus far and is expected to repeat as an All-CIAA performer.

"We have a good team," the tri-captain said, "We will just have to go out and try to prove it."

Sutton has been one of the Bear mainstays, having caught over 120 passes for at least 20 touchdowns during his college career. An All-CIAA end during his freshman year, he made

honorably mention in his sophomore year. He did not take any conference honors in his junior year because, as he puts it, "Nomination is based on the number of receptions an end makes during the season."

And last year, Livingstone had a more balanced team than it had in the two previous years.

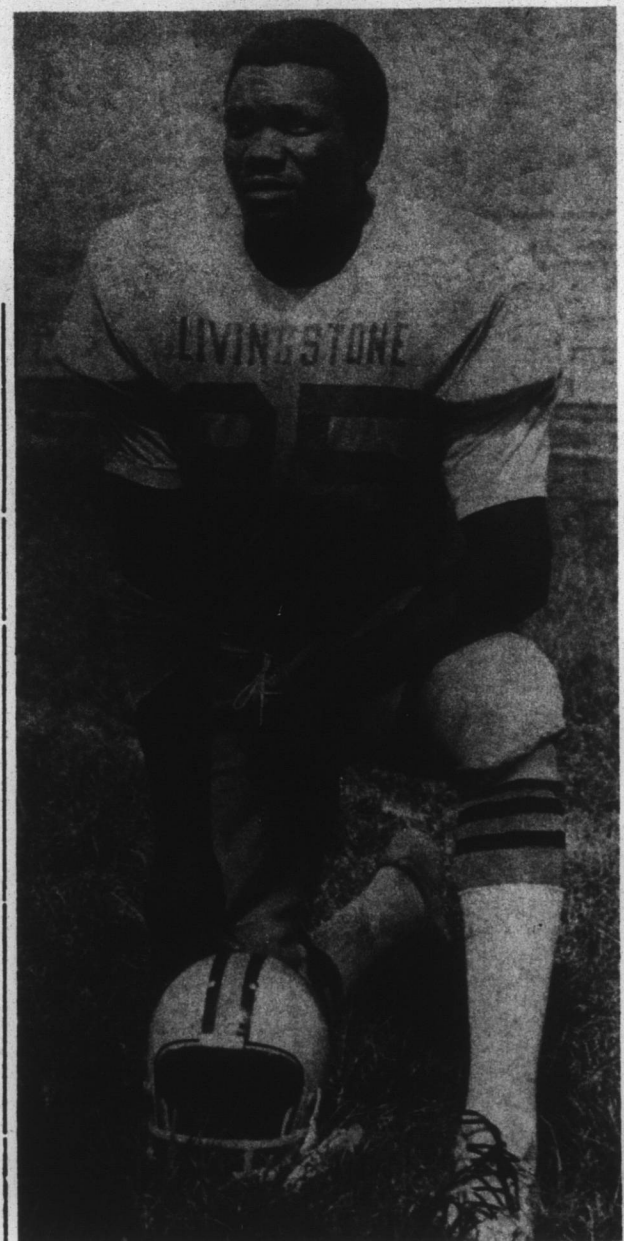
"When you can run the ball," Sutton said, "you only pass when you have to."

Sutton is not concerned about whether or not he makes all-conference this year. He's more concerned about whether or not the Bears have a winning season. And he is used to playing on a winning team.

His high school team won 24 while losing only three. That was under Coach Robert Shields at D. F. Walker High School in Edenton, where he played end and defensive back.

The 185-pound senior would like to play professional ball upon graduation from college, but if he doesn't make it, he is thinking about applying for Officers' Candidate School in the Marine Corps.

Sutton has been watched by pro scouts and is expected to be approached by both AFL and NFL agents as soon as the draft season starts.



SILVESTER SUTTON

Around Chowan County Farms

Continued from Page 1

ches before new growth starts in the spring. Apple varieties include Lodi, Delicious, Golden Delicious, Stayman, Red Rome and Turley. They should be spaced 35 feet apart. Two or more of these varieties will cross pollinate each other and help to get a better set. Pear varieties include Kieffer, Seckel, Orient, Magness and Moon-glow. They should be spaced 30 feet apart. Peach varieties are numerous: Candor, Dixired, Dixigen, Redhaven, Golden Jubilee, Southland, Georgia Belle and Elberta. Pecan varieties for our area are Stuart, and Cape Fear. Other varieties are too subject to disease to be of much value. Pecan trees should be spaced 60 feet apart.

Bull And Heifer Sale:
J. M. Davis and H. J. White will hold their third annual Polled Hereford Sale on Monday, December 1 at the H. J. White farm near Bladenboro. They will offer 25 bulls and 45 open heifers. Bulls will be weighed and have 205 day preweaning and 140 day feed test records. Heifers will have 205 day records. All bulls grade choice or better.

ONE STOP INSURANCE SERVICE for ...

Business • Home Car • Life

Federated INSURANCE

Call the man with the shield



Rudolph Dale
901 Cabarrus Street
Phone 482-3222

Farm Fire Damage
NEW YORK — For such reasons as lack of fire-fighting facilities, less rigid wiring and construction standards and poorer heating equipment, fires in rural areas cause three to six times more damage on the average than fires in the cities, says the Insurance Information Institute. Farm fires caused a record \$214 million damage in 1968.

Veterans and surviving dependents of deceased veterans comprise almost half the population of the U. S.

ALUMINUM and VINYL SIDING
NEVER NEEDS PAINTING — WARMER IN WINTER—COOLER IN SUMMER
••• FREE ESTIMATES •••
— CALL —
HAYWOOD JONES
482-2314 or 482-4515

FOR QUICK RESULTS, TRY A Herald Classified Ad!

COA COLLEGE CREDIT COURSES

OFFERED IN EDENTON, N. C.

- A Selection Can Be Made from the Following Courses:
- Sociology 201—Introduction to Sociology 3 hrs. credit
 - Psychology 201—General Psychology 3 hrs. credit
 - English 101—English Composition 3 hrs. credit
 - English 201—English Literature 3 hrs. credit
 - Art 104—Drawing 3 hrs. credit
 - Art 110—Crafts Design 3 hrs. credit
 - Economics 110—Principles of Economics 3 hrs. credit
 - History 101—Ancient History 3 hrs. credit
 - History 201—U. S. History 3 hrs. credit
 - Philosophy 201—Modern Philosophy 3 hrs. credit
 - Education 201—Introduction to the Study of Education 3 hrs. credit

The courses are designed for people who are not presently enrolled at COA, and who are not now commuting for regular classes. They will be held at the John A. Holmes High School on Monday and Thursday nights from 7:00 - 10:00 P. M. Those interested should review the list and indicate their preferences in numerical order (1, 2, 3, 4, etc.) realizing that the college will not be able to offer all the courses but will offer those most preferred. You are requested to call the COA Learning Lab in Edenton, phone 482-4745, to indicate your interests and for information regarding courses. When calling, you should be prepared to give the following information: Your name, phone number, address and course preference, from most to least preferred.

Only courses for which a substantial interest is expressed can be offered, so be sure to CALL NOW!

College OF THE Albemarle

A Thought to Remember

By MARVIN BARRAM

I wonder how many apples had fallen from the trees before Isaac Newton came to his certain conclusion regarding the law of gravity.

How many people had watched a boiling kettle on a stove with the lid being lifted by steam pressure? One day the bright-eyed Watt saw this and began thinking about a steam engine.

What ability did Newton and Watt have that millions before them did not possess? Did they just use the ability they had?

Little ability does not mean little opportunity. Many great services to mankind have been rendered by persons of little ability. No gift is small if we make good use of it. No opportunity is insignificant if we use it significantly.

OUR THOUGHT TO REMEMBER: "No matter how little we have, triumph follows its sincere use."

Colonial Funeral Home
Edenton, North Carolina



Shown here in front of their beautiful new Shell service station are (left to right) Merrill Perry and Herbert Byrum, Jr., partners; Betty Perry, Doris Herman, Earl Lane and James Riddick.

We appreciate your welcome...
And we pledge to continue to do our best and be worthy of the trust you have placed in us.

Your response to our opening has been most gratifying. We're always glad to see our old friends and to make new ones. Here's an open invitation to all: come in often — for the finest Shell products and really quality service every time.

EKCO ETERNA STAINLESS TABLEWARE
Contemporary "Canoe Muffin" pattern—solid, forged stainless steel that will not chip, peel or wear off—100% dishwasher safe—place settings and complete serving pieces — regular \$2.25 retail value.

only 99c a box with gasoline purchase

EDENTON SHELL SERVICE
CORNER OF HIGHWAY 17 AND 32
IN EDENTON, N. C.
"Service Is Our Business"

WHITEWALL-BLACKWALL

SALE

GOOD YEAR
NEW TREADS Retreads on Sound Tire Bodies

ONE LOW PRICE FOR COMPACTS	ONE LOW PRICE MEDIUM CARS	ONE LOW PRICE BIG CARS
\$11*	\$12*	\$13*
SIZES: 6.00x13 6.95x14 6.50x15 6.50x13 7.00x14 7.35x15 7.00x13 7.35x14	SIZES: 7.75x14 7.75x15 8.25x14 8.15x15 8.25x15	SIZES: 8.45x15 and LARGER

*Plus 27¢ to 46¢ per tire Estimated Fed. Ex. Tax recovery (depending on size) and retreadable tire of same size.

• You get the same road-gripping type tread design that comes on our new car "Power Cushion" polyester cord tire • Pick Your Size Now — Go Goodyear

PICK-UP, PANEL and CAMPER TRUCK OWNERS!

ANY SIZE LISTED SAME LOW PRICE

GOODYEAR RIB 'N' MILLER
Strong and tough to take truck work in stride

SIZE	TYPE	EACH PRICE	2 TIRE PRICE	4 TIRE PRICE	FED. EX. TAX PER TIRE
6.70 x 15	Tube-type	\$19	\$37	\$72	\$2.42
7.00 x 13	Tubeless	\$19	\$37	\$72	\$2.34
7.00 x 14	Tubeless	\$19	\$37	\$72	\$2.64

*Plus tax and recappable tire — tire for tire

20-Month Guarantee
Free retreads on lower end within 20 months. If applicable, at any time in your lifetime. Excludes all other tires. Subject to inspection and approval. No cash refund. Subject to the conditions of the guarantee of service at all times and the quality of service at all times.

Goodyear Motr-Spin Batteries
6-Volt only... 12-Volt only...
\$998 \$1350
exchange exchange
(1951 - 1957) (1958 - 1960)

Put one of these batteries under your hood today and get new Go-Power at this low-low price.

Use Our Easy Pay Plan!

GOODYEAR SERVICE STORES
413 S. Broad St. Phone 482-2477 Edenton, N. C.