



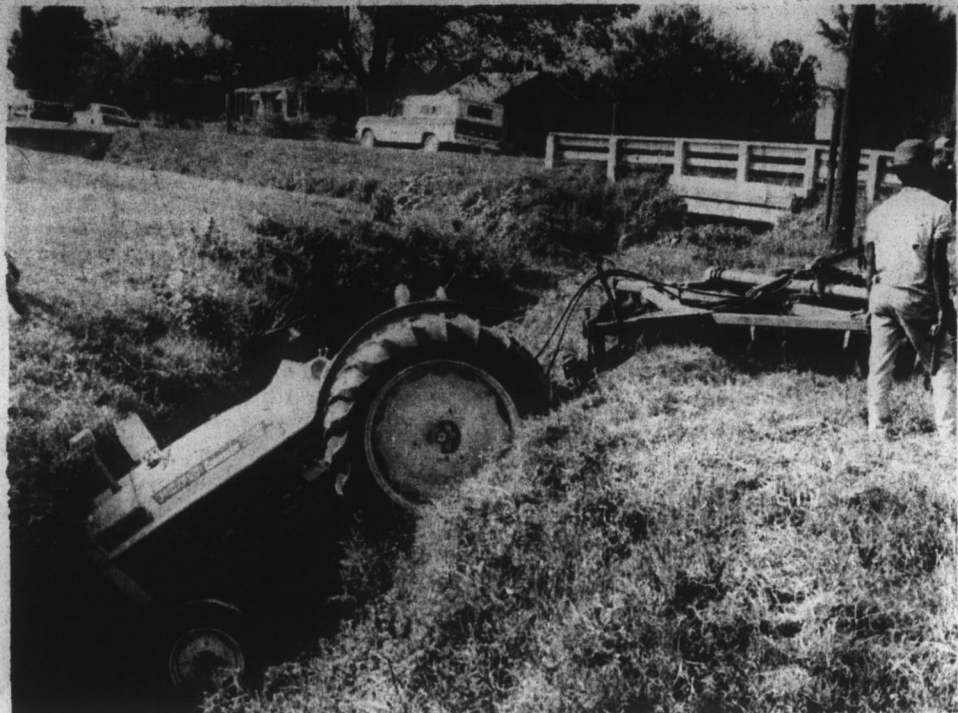
THE CHOWAN HERALD



SECTION B

Edenton, North Carolina, Thursday, September 24, 1970

SECTION B



DRIVER ESCAPES INJURY — The driver of this tractor was pulling a heavy disc Monday afternoon when it went out of control and ended up in Filbert's Creek in front of Chowan Medical Center. The rig was owned by Tommy Leary.

Senator Sam J. Ervin Reports

WASHINGTON—What started out 16 years ago as a landmark decision by the U. S. Supreme Court to prohibit public school desegregation on account of race has turned into a growing nightmare of confusion for local educators, parents, and students.

The opening of many Southern schools has amply demonstrated the magnitude of this confusion, and one case in point is the Charlotte busing situation which is set for a hearing before the U. S. Supreme Court in mid-October. Thus, the Supreme Court may now rule for the

first time as to whether "busing" is required to achieve the requirements of the equal protection clause of the Fourteenth Amendment.

How did we arrive at this crisis? The federal government first became deeply involved in the desegregation of the public schools as a result of the Brown Case in 1954, when it decided that a state could not deny a child "the equal protection of the laws" so as to prohibit him from attending any public school on account of race.

Ten years later, Congress enacted the Civil Rights Act of 1964 in part to implement the Fourteenth Amendment as interpreted in the Brown Case. Up to that time, the law was interpreted to mean that the Brown Case did not require busing of school children to achieve racial balance, and, indeed, during the debate on the Civil Rights Act of 1964, former Senator Humphrey, floor manager of the bill, stated that busing would not be required to achieve racial balance under that act.

Shortly after the passage of the Civil Rights Act of 1964, however, the HEW Department began issuing bureaucratic guidelines for the dispensation of federal funds to the public schools. Among the initial HEW guidelines for the receipt of federal educational funds were requirements for geographical zonings and racial quotas to achieve a mixing of students. Later pressures from HEW suggested that racial balance be achieved by busing of children to and from the schools. As the years have gone by, there have also been plans ordered into effect by lower federal courts which dealt with law suits brought to achieve a desegregation of the public schools. These orders have proceeded from one requirement to another until now we have thousands of students being moved around like pawns in a chess game.

I think the readers of this column know that I have sought many times during the debates in the Senate to pre-

vent this tragedy which is diverting our public school system from its primary purpose of educating our children. But more than that, the busing requirement alone raises immensely practical problems for taxpayers, parents and children.

The public schools are already faced with serious problems of adequate funding, finding competent administrators and teachers, and dealing with the basic requirements of providing students an education. It seems to me that the federal courts and HEW officials have ignored this too long. I would hope that at long last the Supreme Court would recognize that there is more to our educational process than a

NEW YORK (a)—Diesel locomotives use aluminum pistons for higher rotation speeds and larger combustion loads. The number of aluminum railroad cars is growing because they have proven their ability to haul more at less cost and require a minimum of care.

FOR SALE
SUBURBAN RESIDENCE
 On Beautiful Wooded Lot
 Also, Residential Lots In and Out of Town
 If Interested, Call
T. B. SMITH
 Phone 482-2959

AROUND CHOWAN FARMS

By R. M. THOMPSON

County Extension Chairman

The peanut harvest seems to be moving along pretty good. It is a little early to tell what to expect as far as the yield is concerned, but the quality seems to be pretty good at this time.

Corn harvest is moving along and we are still encouraging those people who are storing corn to consider the use of malathion to control weevils. This is a premium grade of malathion and is not harmful at all for feeding or for sale. This can be mixed right with the corn when it is being put into the bins.

The 4-H Club pullet show and sale is being held at the Chowan County Fair this week. These pullets, and most of them are laying, are raised by 4-H boys and girls and they are sold in pen lots of eight. If you have need of a few pullets, this would give you a wonderful opportunity to secure some good pullets. The sale will be at the fair grounds on Thursday, September 24, at 4:30 P. M. We would like to see you take this opportunity to get pullets if you have a need for a few.

Dry weather is good in some cases of harvesting peanuts, but it has been bad for the soybean crop. Soybeans are beginning to shed due to the extreme dryness, but there is still plenty of time to get a cover crop sown or small grain for harvest planted. If you believe you will need some additional feed for livestock next spring, it might be a good thing to plant some wheat or barley. Both of these can be used to replace some of the corn that you normally feed hogs, and there is quite a bit of feed value in wheat or barley. If you have doubts about the production of wheat or barley on the farm, we would be glad to discuss this with you any time that you have the opportunity. Any questions that you might have as to fertility could probably be checked out with a soil sample and now is probably a good time to get other soil samples also. The boxes and information sheets are available at the county extension office.

LIGHT METAL JUST RIGHT

NEW YORK (a)—About the only kind of pipe ever used for portable irrigation systems is made of aluminum because it's light, durable and resists corrosion.

NUTRITION NOTES

Don't eat "like a lady." A government survey pointed an accusing finger at the fair sex, saying that women, 35 and over, generally are the worst offenders where selection of a good diet is concerned.

The same government report called attention to a "hidden hunger" for calcium in millions of American diets and went on to say: "As most everyone knows, milk is the best source of calcium in our food supply."

"To help you achieve your calcium need, nutritionists recommend that children drink three or more 8-ounce glasses of milk each day; teenagers and pregnant and lactating women, four or more glasses; and adults, two or more glasses, daily, or its equivalent in other dairy foods."

Hickory shad are found only in the southern states.—Sports Afield.

NOW OPEN COLTRAIN TILE CO.

120 Jackson Street — Edenton, N. C.

PHONE 482-3276

Ceramic, Marble, Quarry Tile
Bathrooms — Porches

FREE ESTIMATES

Sherwood R. Coltrain

Owner

END-OF-SUMMER / PRE-WINTER VALUE ROUNDUP!

Let us help with your BATHROOM and...

Binnings

TUB ENCLOSURES
• Heavy obscure glass set in water-light vinyl
• Aluminum frames with nylon rollers & groove tracks
• Includes towel bar

\$28.00

POWDER ROOM SET
BY BORG WARNER

Complete bath set includes:
• 19 x 17 Lavatory
• Reverse Trap Closet
• Legs and Towel Bar

\$62.95

LAWSON'S
5-PIECE BATH SET

• Toothbrush-Tumbler Holder
• Soap Dish
• Paper Holder
• 18" Towel Bar
• 24" Towel Bar

\$57

KITCHEN plans

TWIN BOWL SINK

only \$36.95

Twin bowl, porcelain on steel sink with flat rim and wide ledge. Acid resisting fused-in porcelain. Heavy gauge steel. Complete with single handle Ultimate faucet and convenient spray available in 6 beautiful decorator colors and white.

HOT WATER HEATERS

Gas or Elec.
• upright
• under-counter
• table-top

from \$45.00

PLASTIC PIPE

from 3¢ per ft.

Never gives you trouble. Takes abuse that ruins other pipes. All popular sizes with matching fittings.

TEXOLITE COUNTER TOPPING

Modern, sealed-in beauty in your kitchen or bathroom. High pressure plastic. Easy to apply and a cinch to clean.

Many patterns \$52.00 sq. ft.

SHELVING BOARD

18"

from \$45.00

SHelf HARDWARE

18"

from \$30.00

Health Tip OF THE WEEK

from **Hollowell's**

Rexall Drug Store
Phone 482-2127

When we get too little water in our diet, the body uses less of it to carry off the wastes filtered out by the kidneys, and the urine becomes less dilute. In a person with a tendency toward kidney stones, this may intensify the trouble. Drinking plenty of fluids will help to wash away salts which otherwise might form into stones and may also be helpful in relieving constipation.

Hollowell's Rexall Drug Store
TWO REGISTERED PHARMACISTS

2nd TIRE 1/2 PRICE

When you buy first tire at our everyday low price...
 You Save \$17 to \$26 on second tire

Blackwall Tubeless Size	Replaces Size	Regular Price Each	2nd Tire Half Price	Plus Fed. Ex. Tax Per Tire, No Trade Needed
700-13	—	\$34.45	\$17.20	\$1.90
C78-14	6.95-14	\$34.55	\$17.25	\$2.15
E78-14	7.35-14	\$35.95	\$17.95	\$2.35
F78-14	7.75-14	\$38.00	\$19.00	\$2.55
G78-14	8.25-14	\$41.70	\$20.85	\$2.67
H78-14	8.55-14	\$45.70	\$22.85	\$2.93
J78-14	8.85-14	\$51.75	\$25.85	\$3.08
F78-15	7.75-15	\$38.00	\$19.00	\$2.61
G78-15	8.25-15	\$41.70	\$20.85	\$2.77
H78-15	8.55-15	\$45.70	\$22.85	\$2.98
J78-15	8.85-15	\$51.75	\$25.85	\$3.08
900-15	—	\$52.60	\$26.30	\$2.90
915-15	—	\$53.70	\$26.85	\$3.06

FREE MOUNTING ON ALL TIRES

USE OUR RAIN CHECK PROGRAM:
Because of an expected heavy demand for Goodyear tires, we may run out of some sizes during this offer, but we will be happy to order your size tire at the advertised price and issue you a rain check for future delivery of the merchandise.

HURRY SALE ENDS SAT. NIGHT

GOODYEAR—THE ONLY MAKER OF POLYGLAS® TIRES

POWER CUSHION POLYGLAS® BLACKWALL TIRES

- 78 Series size with low profile for steady ride, steering
- Broader footprint traction contact than comparable conventional size tires. Two polyester cord body plies, non-flat spotting, two fiberglass belts suppress tread-squirming wear and maintain traction effectiveness

Get fast, sure starts in all kinds of weather!

NEW "Spitfire" BATTERY
12-Volt Size \$15.95

FITS MANY POPULAR CARS
Buick LeSabre '64-'66; Chevrolet '63-'68 8. cyl. 327 and 409; Ford '56-'64 (except 260 eng. 289 eng. std.) Mercury '56-'64 all std.; Pontiac '55-'66 ... and more ...

GOODYEAR—THE ONLY MAKER OF POLYGLAS® TIRES

4 WAYS TO PAY AT GOODYEAR

1. **GOODYEAR LIBERAL BUDGET TERMS**
2. **30-60-90 DAYS same as cash on major appliances and TV's.**
3. **Master Charge**
4. **Discover Card**

Open Daily 8 A. M. to 5:30 P. M., Except Wednesday 8 A. M. to 1 P. M.

GOODYEAR SERVICE STORES
412 S. Broad St. Phone 482-2477 Edenton, N. C.

FOREMAN'S MILLWORK
N. HUGHES BLVD. DIAL 335-5010

ALLSTATE BUILDING SUPPLY
301 N. HUGHES BLVD. DIAL 335-5485

FOREMAN'S INCORPORATED
KITTY HAWK, N. C. DIAL 441-4961