

**TAYLOR TRAILER**—Greensboro area college students are on the move in Lieut. Gov. H. Pat Taylor's gubernatorial campaign. This mobile campaign office is a joint project of students at Greensboro College, Guilford College and UNC-G. They move the mobile home around Guilford County and distribute campaign materials to interested passersby. Among the students who man the Taylor Trailer are, left to right, Bee Hudson and Cathy Zachary, both from Greensboro College. Max Welborn and Susan Gibson, who attend Guilford College. No, four-year-old Stacy Miller of Greensboro is not in the Taylor Youth Program yet, but she'll be happy to hand you a Taylor bumper sticker or campaign button.

## Auto TV Quiz Show Planned

John Guard, regional driver education coordinator at Edenton, is urging students and parents to tune in to the upcoming National Automotive Trouble Quiz (NATQ). NATQ, a one-hour television special devoted to the how's and why's of car care, will be aired in Washington at 4 P. M., WITN Channel 7, and Norfolk at 1 P. M. over WVEC, Channel 13. Designed as a quiz to enable viewers to determine the extent of their own knowledge of car care, the program focuses on specific problems and ways to correct or prevent them.

Host and narrator is Dave Garroway, a television personality widely known for his interest in and knowledge of cars. Realistically demonstrating troubles and the exasperations they can bring will be comedienne Peggy Cass, currently appearing on To Tell the Truth, and Louis Nye, a versatile favorite of stage and television audiences.

## Holmes Highlights By RALPH NIXON

### NHS To Sell Doughnuts

The National Honor Society will take orders for Krispy Kreme glazed doughnuts. All people who would like to enjoy a delicious treat and help a worthy cause are urged to buy from any NHS member. The sale is limited, so hurry and get your doughnuts today! **Concert Choir Performs** On March 9 all Holmes' students were bused to Swain School to hear the Carteret High School Concert Choir. The Choir boasted 80 voices and was under the direction of Laurence Stith. Contemporary and soft sounds were sung by the group and the program was enjoyed immensely. The Chowan Arts Council must be thanked for their sponsorship that enabled students to see and hear the choir.

### Juniors

In about three weeks the Junior-Senior Prom will be given — or will it? It has been expressed that there is very much work that has to be done. Juniors are urged not to wait around to be asked to work, but to volunteer.



## CENTRALIZED TAX SERVICE

209 S. BROAD STREET

AND

SUITE 205

BANK OF NORTH CAROLINA, N.A.

EDENTON, N. C.

### State and Federal Returns Prepared

NO APPOINTMENTS NECESSARY UNLESS SERVING CLIENT IN HOME OR OFFICE

Hours 9 A. M. - 5 P. M.

Phone 482-8133

Advice to Motorists: Drive carefully, and then remember to watch out for the other driver, who may not be careful.

## Harless Named County Chairman

Edenton insurance man Allen B. Harless, Jr., is Chowan County manager for the campaign of Hargrove (Skipper) Bowles, Democratic candidate for Governor.

Bowles made the announcement from his Raleigh headquarters on Thursday.

"A. B. Harless, Jr., is a successful businessman who has the concern of his community and his state uppermost in his mind, and I know he's going to do a great job for us in Chowan," Bowles said.

Harless is a partner in the R. Elton Forchard Agency.

A lifetime resident of Edenton, he has been active in the work of the Jaycees and now serves as director of the Edenton Rotary Club and a director and secretary of the Edenton Chamber of Commerce.

He served overseas with the U. S. Army in Europe. His wife is the former Lucy Atkinson and they have two children, Katherine, 10, and Martha Scott, seven.

They are members of the Edenton United Methodist Church, where Harless is past chairman of the board and currently serves as a trustee.

He was educated at John A. Holmes High School and attended Randolph-Macon College in Ashland, Va.

## Lee To Teach Course At COA

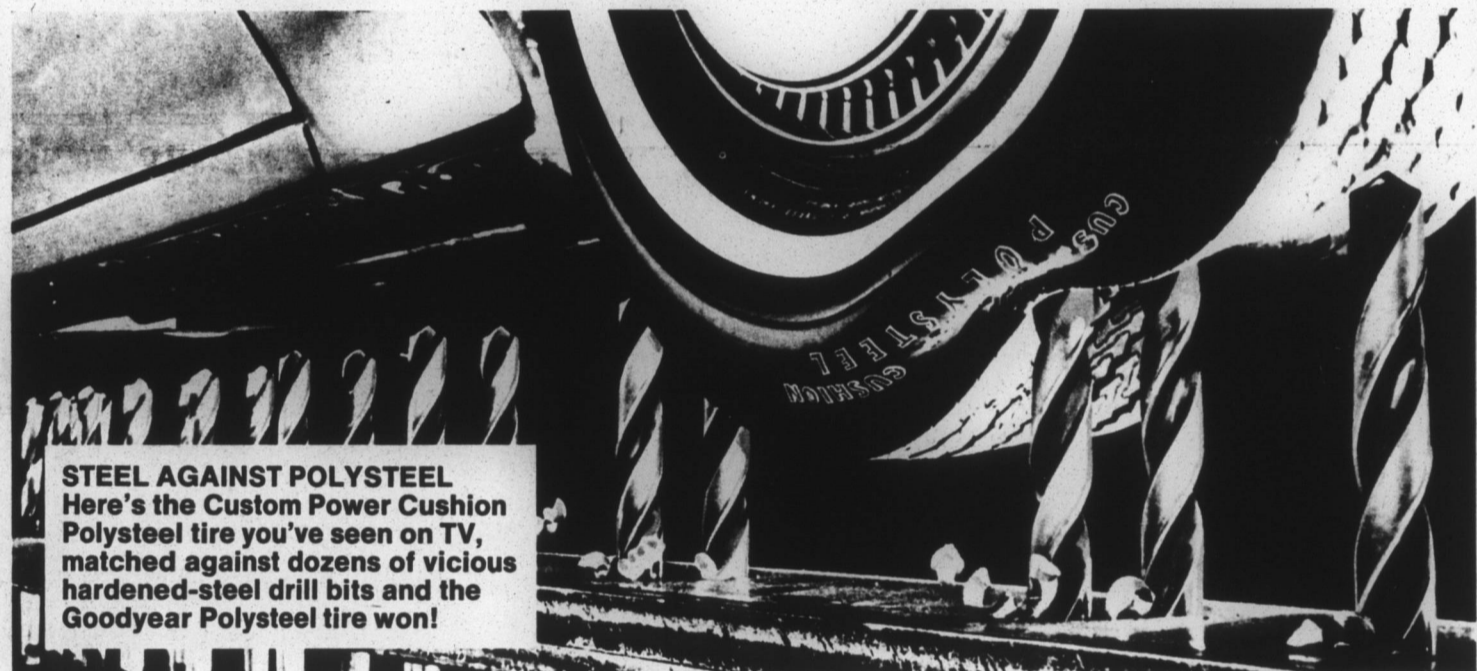
A course in "Basic Heating," coordinated by the Adult Education Division of College of the Albemarle, will be offered on Thursdays at 7 to 10 P. M., from March 16 through May 18, in Room 12 at the Water Street annex.

Joe Lee of Edenton is the instructor for this 45 hour course which will include 30 hours of classwork and 15 hours of field work.

The course is designed to help citizens maintain their home heating units. Instruction will be directed toward practical experiences.

A registration fee of \$2 will be charged. Registration will be at the first class meeting on a first come, first served basis.

# Introducing ... A New Goodyear Polysteel Tire



**STEEL AGAINST POLYSTEEL**  
Here's the Custom Power Cushion Polysteel tire you've seen on TV, matched against dozens of vicious hardened-steel drill bits and the Goodyear Polysteel tire won!

## Custom Power Cushion Polysteel

Here's steel cord belt strength with polyester cord smoothness, in a great long-wearing tire.

Goodyear builds it with two belts of steel cord for long-lasting resistance to impact and penetration. (You wouldn't run over steel drill bits the way we did here — but the demonstration illustrates how tough the steel belts really are.)

Then Goodyear makes the long mileage easy to take, with a flexible polyester cord body to soak up the shocks.

The brute strength of steel. The road-softening smoothness of polyester. Both in this superb new tire.

Check your size check your price

Whitewall Tubeless Size	Replaces	Price With Trade In	Plus Fed. Ex. Tax
A78-13	—	\$47.95	\$1.86
B78-14	6.45-14	\$49.95	\$2.05
C78-14	6.95-14	\$51.95	\$2.15
E78-14	7.35-14	\$55.95	\$2.32
F78-14	7.75-14	\$57.95	\$2.54
G78-14	8.25-14	\$59.95	\$2.69
H78-14	8.55-14	\$63.95	\$2.74
F78-15	7.75-15	\$58.95	\$2.62
G78-15	8.25-15	\$60.95	\$2.80
H78-15	8.55-15	\$64.95	\$3.47
J78-15	8.85-15	\$68.95	\$3.23
L78-15	9.15-15	\$74.95	\$3.56

Hurry ... Trade Today — start riding on Polysteel tires.

USE OUR RAIN CHECK PROGRAM: Because of expected heavy demand for Goodyear tires, we may run out of some sizes during this offer, but we will be happy to order your size tire at the advertised price and issue you a rain check for future delivery of the merchandise.

### 3 WAYS TO CHARGE



# GOODYEAR

THE ONLY MAKER OF POLYSTEEL TIRES

## NOW AT YOUR NEARBY GOODYEAR SERVICE STORE

TELEPHONE 482-2477  
Plenty Of FREE Parking

412 S. BROAD STREET  
Open Daily 8 A. M. to 5:30 P. M.

EDENTON, N. C.  
Wednesday 8 A. M. to 1 P. M.

## CALL ME!



Clarence Britton

**Hoke Motor Corp.**  
PHONE 482-2191  
EDENTON, N. C.



## RE-ELECT Morris Small

To Edenton-Chowan Board of Education

Saturday, May 6th  
Your Support and Vote Will Be Appreciated!

## Spring Savings

for homebuilders and the do-it-yourselfer!

### Black & Decker Shrub and Hedge Trimmer

A GREAT SPRING SPECIAL  
You get 3600 cutting strokes per minute with this 13" single edge trimmer. Contour grip handle with fingertip switch makes this lightweight tool easy to use.



12<sup>99</sup>

Makes shrubs and hedges look great in minutes instead of hours! Get yours today!



### Finishing Sander

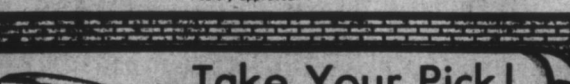
12<sup>99</sup>

This fine tool is beautifully balanced for operating ease. It's orbital action permits sanding on 3 sides for fine finishing of wood, metal or plastics. Thumb switch gives it easy one-hand control. It is designed with the beginner handyman in mind.

### Start something... with this Black & Decker Power Saw

Tackles big or small jobs!

Just the tool for the handyman or professional carpenter. Uses 2 1/2" or 7 1/2" blades. Keeps sawdust away from cutting line. Has a powerful 7-horsepower motor and is safety approved.

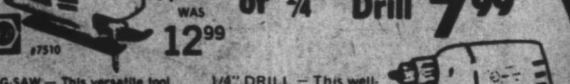


19<sup>99</sup>

### Take Your Pick!

Jig Saw 9<sup>99</sup>

or 1/4" Drill 7<sup>99</sup>



12<sup>99</sup>

JIG-SAW — This versatile tool makes straight, curved or irregular cuts in any type of material... wood, metal, plastics or composition-type boards. Easy to handle with thumb control switch.

1/4" DRILL — This well-balanced and comfortable to hold tool has double reduction gearing and chuck to handle bigger, tougher jobs. There are several line accessories available for it too!

9<sup>99</sup>

REMEMBER "CASH & CARRY" 5% DISCOUNT

**FOREMAN'S MILLWORK**  
N. HUGHES BLVD.  
DIAL 335-5010

**ALLSTATE BUILDING SUPPLY**  
301 N. HUGHES BLVD.  
DIAL 335-5455

**FOREMAN'S KITT HAWK**  
KITTY HAWK, N.C.  
DIAL 441-4961

OPEN DAILY 9:00 AM SAT. 4:00 PM