



Family Size	Free Lunches	FREE or reduced Price	Number of Children in School, Pre-School, or Day Care Centers														
			1	2	3	4	5	6	7	8	9	10	11	12			
1	\$0-2450	2451-2769	Red.														
2	0-3209	3210-3627	Red.														
3	0-3968	3969-4485	Red.	Red.													
4	0-4727	4728-5343	Red.	Red.	Free												
5	0-5428	5429-6136	Red.	Red.	Free	Free											
6	0-6130	6131-6929	Red.	Red.	Red.	Free	Free										
7	0-6762	6763-7644	Red.	Red.	Red.	Free	Free	Free									
8	0-7395	7396-8359	Red.	Red.	Red.	Red.	Free	Free	Free								
9	0-7970	7971-9009	Red.	Red.	Red.	Red.	Free	Free	Free	Free							
10	0-8545	8546-9659	Red.	Red.	Red.	Red.	Red.	Free	Free	Free	Free						
11	0-9120	9121-10,309	Red.	Red.	Red.	Red.	Red.	Free	Free	Free	Free	Free					
12	0-9695	9696-10,959	Red.	Red.	Red.	Red.	Red.	Red.	Free	Free	Free	Free	Free				

-For each additional family member, add \$575 per year to the income level.
 -The reduced price for lunch is 20 cents.
 -The reduced price for breakfast is 10 cents.

Edenton-Chowan Schools Offers New Meal Policy

The Edenton-Chowan Board of Education today announced a free and reduced price meal policy for Edenton-Chowan School children unable to pay the full price. Families suffering from unusual circumstances or hardships are urged to apply for free or reduced price meals for their children. They may do so by filling in the application forms sent home in a letter to parents. Additional copies are available at the

principal's office in each school. Applications may be submitted any time during the school year. The form requests information needed to determine economic need based on the income and number of persons in the family and any unusual circumstances or hardships which affect the family's ability to pay for school meals. The information provided on the application will be confidential and will be

used only for the purpose of determining eligibility. A complete copy of the policy is on file in each school and in the office of the assistant superintendent where it may be reviewed by any interested person.

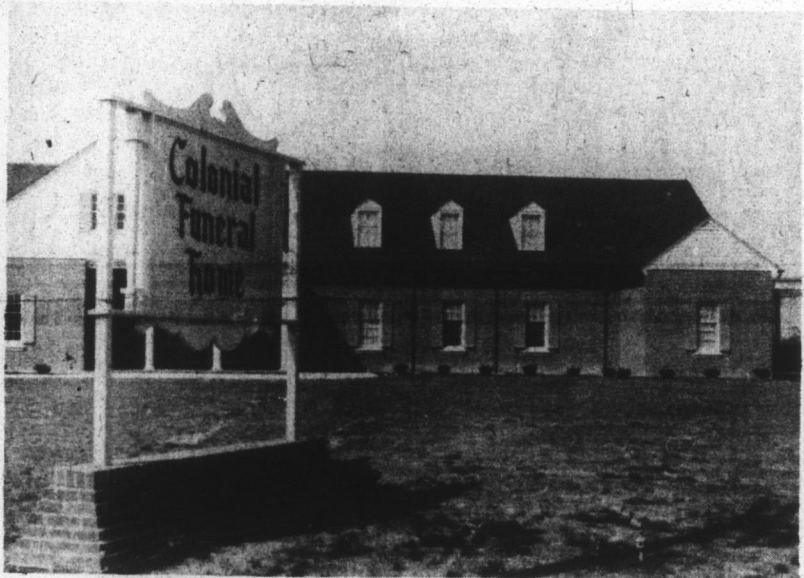
Steel Module Home Community Planned

A new planned community of 183 single-family factory-fabricated steel homes is being developed as a part of a 100-acre residential complex near Canton, Ohio, Republic Steel Corp. has announced. The company, in a joint venture with local developers, Raymond N. Malcolm and William C. Mattevi, is employing the concept of planned unit development.

Called the Perry Hills Colony, the housing complex will be zoned as a total site rather than as individual lots of uniform size. Cluster housing is then used to create common-use land and still maintain individual privacy. The single homes are to be moderately priced and are grouped along cul de sac streets or along looped, winding roads. About 30 per cent of the land is to be preserved and the natural ecology protected.

With the area will be garden apartments, town houses and a small shopping complex. The latter, situated along a major highway, will act as a buffer zone between traffic and residential sections.

The Republic home uses galvanized and pre-painted steel sandwich panels and components, which lend themselves to efficient erection on site, according to the builders.



Dignity . . . Understanding . . . Thoughtfulness

HIWAY 32 NORTH PHONE 482-4488 EDENTON, N. C.

Learning Program to Aid Plant Foremen

A new learning program to enable factory foremen to cope more effectively with mounting supervisory problems has been developed by Westinghouse Learning Corp. Called "Man on the Line," the new program integrates full-color filmstrips, audio cassettes and foremen's workbook. It incorporates the structural communications methodology in which there are no "right" or "wrong" answers. Foremen are required to make analytical judgments and develop a patterned approach to decision-making.

Canned Rubber Rides Free of Contamination

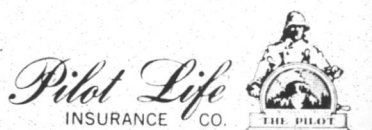
Aluminum containers are now used to transport eighty-pound "loaves" of synthetic rubber and are hoisted on specially-built railroad flatcars for the journey between chemical plants and a tire factory, according to the Goodyear Tire & Rubber Co. This new system, which replaces cardboard and wood containers, provides "a contamination-free, weather-proof packaging, storage and transporting system that could eventually be adopted by most manufacturers in the rubber and chemical industries."



RALPH SAUNDERS
Staff Manager
Phonex: Bus. 482-4550
Res. 482-2254
EDENTON, N. C.

Will Tomorrow Be Bright For You?

Plan your tomorrow today with a Pilot Life program . . . your best security for retirement, and the best protection for your family now.



GOODYEAR SERVICE STORES

25% OFF

CUSTOM WIDE TREAD POLYGLAS

SAVE NOW...WHITE STRIPE WIDE "70" SERIES TIRES



SAVE \$11.78 to \$14.34 each on wide 70 series tires

Tubelless Size	Replaces	White Stripe Reg. Price and old tire	White Stripe Sale Price No Trade-in	Plus Fed. Ex. Tax
D70-14		\$47.10	\$35.32	\$2.36
E70-14	7.35-14	\$49.15	\$36.86	\$2.51
F70-14	7.75-14	\$51.20	\$38.40	\$2.64
G70-14	8.25-14	\$53.25	\$39.93	\$2.84
H70-14	8.55-14	\$56.30	\$42.22	\$3.04
F70-15	7.75-15	\$52.20	\$39.15	\$2.68
G70-15	8.25-15	\$54.25	\$40.68	\$2.87
H70-15	8.55-15	\$57.35	\$43.01	\$3.12

3 WAYS TO CHARGE • Our Own Customer Credit Plan • Master Charge • BankAmericard

• Polyester cord body plus fiberglass cord belts • The tire that's standard or optional equipment on many new cars • Built for today's fast action cars and for the man who wants great tire performance
25% OFF - Sale ends Saturday night

ANNUAL MEETING EDITION ALBEMARLE FLASHES

Albemarle Electric Membership Corporation
Hertford, North Carolina

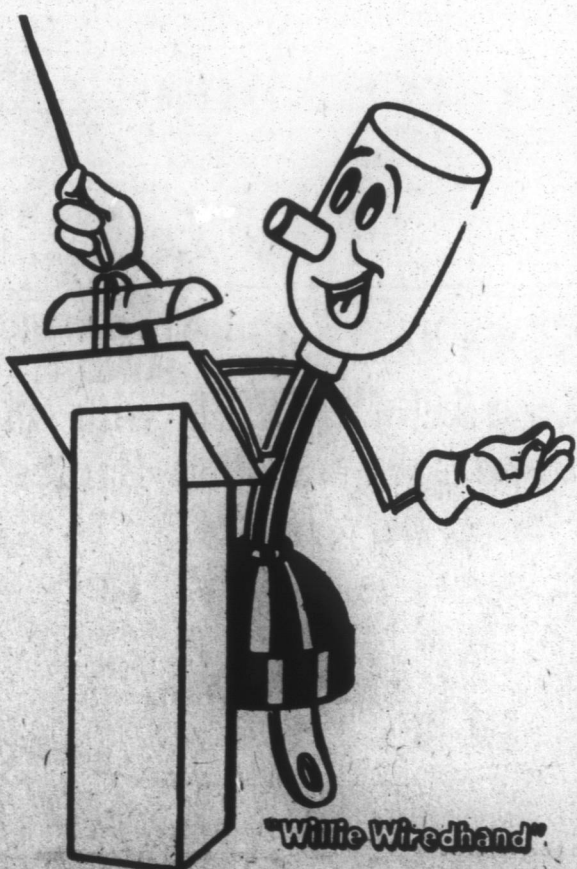
ANNUAL MEETING

SATURDAY
SEPT. 23

2:00 P. M.

PERQUIMANS COUNTY
HIGH SCHOOL
HERTFORD, N. C.

- REPORTS
- ELECTION OF DIRECTORS
- PRIZES
- ENTERTAINMENT



Willie Wirehand

Albemarle Electric Membership Corp.

Wide 60 series performance tires! "RALLY GT"

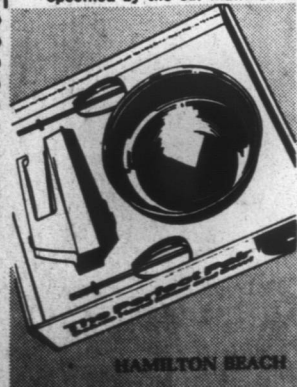
Tread designed from racing specifications for stability in street-use!*

- Big Goodyear white letters.
- Low, wide 4-ply nylon cord construction gives high performance stability and fast heat dissipation.
- Concave-molded body and wrap-around design to meet high-performance car demands.

\$29.95

*Not a racing tire, but designed like one . . . wide tread groove design to give squeeze-like firmness and road-grabbing traction.
(60-Series sizes should be used only on cars specified by the car manufacturer)

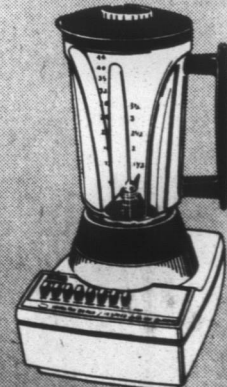
A60-13 4-ply tubeless White-letter sidewall plus \$1.98 Fed. Ex. Tax and recappable trade-in. Larger Sizes Priced Slightly Higher



Deluxe 3-Speed Hand Mixer
Lightweight Portability

\$12.95

Finger tip beater ejector and "open handle". 3-quart stainless steel bowl. Easy to clean non-splash beaters.



Hamilton Beach 14-Speed Blender
Removable Cutting Blades

\$22.95

Large 44-oz. shatterproof container. Surgical steel cutting blades. Solid state design. split second power.

LOW TERMS... INSTANT CREDIT... JUST SAY CHARGE IT

GOODYEAR SERVICE STORES

412 S. Broad St. EDENTON, N. C. Phone 482-2477

3 WAYS TO PAY AT GOODYEAR

OUR OWN EASY PAY PLAN

