

### Referendum Polling Sites Named Coverage Changed

Polling places for the July 17 referendum on acreage-pounding marketing quotas for flue-cured tobacco have been designated by the Chowan County Agricultural Stabilization and Conservation (ASC) Committee.

All growers 18 years of age or older who share in the 1973 flue-cured crop or its proceeds are eligible to vote. Where no tobacco is produced in 1973 on a tobacco allotment farm, only the owner and operator are eligible.

Acreage-pounding quotas have been in effect since 1965. Flue-cured tobacco growers must now decide whether or not to continue the program.

If two-thirds or more of the votes cast are "YES", the quotas will continue in effect for the 1974, 1975, and 1976 crops. Growers may carry undermarketings from a short crop over to the next year. They also may market up to 10 per cent over the farm's poundage quota, penalty-free, by deducting the difference from the next year's crop. A penalty will apply to marketings over 110 per cent of the farm's poundage quota. Price support on up to 110 per cent of the farm's quota will be available to growers who produce within their allotment acreage.

If more than one-third of the vote is "NO", there will be no marketing quotas and no price support in effect for the 1974 flue-cured tobacco crop. No limits will be put on production of flue-cured tobacco.

If marketing quotas are rejected in this year's referendum, another referendum will be held next year. If quotas are continued, the next referendum will be held in 1976.

This program is open to all eligible participants, without regard to their race, color, religion, sex or national origin. County ASC Committee Chairman Griffin urges all flue-cured tobacco growers to vote on this important question.

The polling place and hours is Chowan ASCS Office 7 A.M. til 7 P.M.

The notices are sent in advance of the July 17 marketing quota referendum so that farmers will know how the vote decision will affect their individual operation. Revised notices adjusted to reflect undermarketings or overmarketings of 1973 quota will be sent to farm operators after 1973 crop marketings are completed.

The acreage-pounding quota program for flue-cured tobacco has been in effect since 1965. The referendum will decide whether the program is to continue for the 1974 through 1976 crops.

This program is open to all eligible participants, without regard to their race, color, religion, sex or national origin.

All producers 18 years of age or older are eligible to vote if they share in the 1973 flue-cured tobacco crop or its proceeds. Where no tobacco is produced in 1973 on a tobacco-allotment farm, only the owner and operator are eligible to vote.

Under the program, growers may carry undermarketings from a short crop over to the next year. They also may market up to 10 per cent over the farm's poundage quota, penalty-free, by deducting the difference from the next year's crop. Price support on up to 110 per cent of a farm's quota is available if a grower does not exceed his acreage allotment.

"If two-thirds or more of the growers voting approve tobacco quotas for the next three years," Griffin said, "the program will continue with acreage allotments, price supports, and penalties on excess tobacco marketed above 110 per cent of farm quota."

"If more than one-third of the voters disapprove quotas, there will be no marketing quota to limit production and no price support for the 1974 crop. In that event, a similar referendum will be held next year."

### Federal Funds Extend Program

A total of 5,892 unemployed, underemployed adults and disadvantaged youths will find employment in the state of North Carolina due to the extension of a Public Employment Program (PEP) by the Department of Labor and the Department of Health, Education and Welfare.

The U. S. Department of Labor's Assistant Regional Director for Manpower William U. Norwood of Atlanta, said federal funds in the amount of \$4,887,785 have been allocated for the extension of the program sponsored by the State of North Carolina, 116 West Jones Street, Raleigh, N. C. 27602, for a period up to June 30, 1974.

PEP is the program through which funds are distributed to finance the hiring of unemployed and underemployed for public service jobs under the terms of the Emergency Employment Act of 1971. This program is also undertaking a summer jobs program for summer youths.

The additional federal funds make it possible for the state, county and local governments to open up jobs in the field of public service which they previously have been unable to provide.

By DONALD S. MORRIS  
Field Representative

Beginning July 1, Medicare can help pay for limited Chiropractor's services under medical insurance, but only under certain conditions. The Chiropractor must be licensed or legally authorized to furnish chiropractic services by the state and also meet federal standards in order to qualify for payment of eligible services by Medicare. In addition, we want to emphasize that coverage of chiropractor's services under Medicare is very limited. It is important for beneficiaries to know that Medicare can help pay only for manual manipulation of the spine for the purpose of correcting a subluxation which can be demonstrated by X-Ray. No payment can be made for any other kind of Chiropractic treatment or for any diagnostic services by the Chiropractor, such as X-Rays or laboratory tests. A subluxation is defined as an incomplete dislocation, off-centering, misalignment, fixation or abnormal spacing of the vertebrae. Beneficiaries with any questions about chiropractic coverage should get in touch with their social security office.

By ROBERT E. LEE  
(Sponsored by the  
Lawyers of North Carolina)

### COMPENSATION OF FIDUCIARIES

What is the measurement of the compensation that executors, administrators, trustees, and other fiduciaries are entitled to recover for their services?

Most states, like North Carolina, have enacted statutes which determine the compensation that fiduciaries are entitled to recover. There is a considerable variance in the language of these statutes in the several states.

In those states where there is no statute on the subject, the courts determine what is deemed a "reasonable compensation."

The North Carolina statute states that "fiduciaries shall be entitled to commissioners fixed in the discretion of the clerk not to exceed five per cent upon the amount of receipts, including the value of all personalty when received, and upon the expenditures made in accordance with law."

The clerk of the superior

court is required to consider "the time, responsibility, trouble and skill involved in the management of the estate."

The fiduciary does not receive a commission of the payment of legacies or distributive shares. There are not technical disbursements.

The commissioners of the fiduciary are, however, given a priority over the claims of creditors and all other persons claiming an interest in the estate.

If the gross value of the estate is two thousand dollars or less, the clerk of superior court is given authority to allow such commission as he, in his discretion, deems "just and adequate". A statutory exception is made in such small estates because a maximum commission of five per cent would not frequently be a reasonable compensation in such cases for the time and trouble involved.

Where an attorney has been appointed the fiduciary and he renders professional services, as an attorney, which are beyond the ordinary routine of administration of the estate, the clerk of the superior court is authorized to allow him

reasonable counsel fees in addition to the commissions allowed him in the role of fiduciary.

+++  
If two or more persons are appointed executors or trustees, does this increase the amount of the total commissions which will be allowed?

No. Two or more may be had for the price of one.

Nothing else appearing, the commissions will be decided equally among them. But where it appears that one has done substantially more than the others, the compensation may be divided among them in accordance with the relative value of their services as determined by the court.

+++  
This is the last of a spring series of articles which have appeared weekly during the past three months. They have been written for the non-lawyer as a public service of the Lawyers of North Carolina. Another series will be started in the fall.

A firearm, included in the collection of an American, recently sold in London for \$300,000. It was a 17th century flintlock.

## This Is The Law

**FANG MAT!**  
BY THOMPSONS

LOVE TIMES SIX!  
ONE OF THE GREATEST ACTS OF FILIAL DEVOTION WAS THE CREATION OF FATHER'S DAY -- BY A DAUGHTER HONORING HER DAD FOR REARING SIX MOTHERLESS CHILDREN!

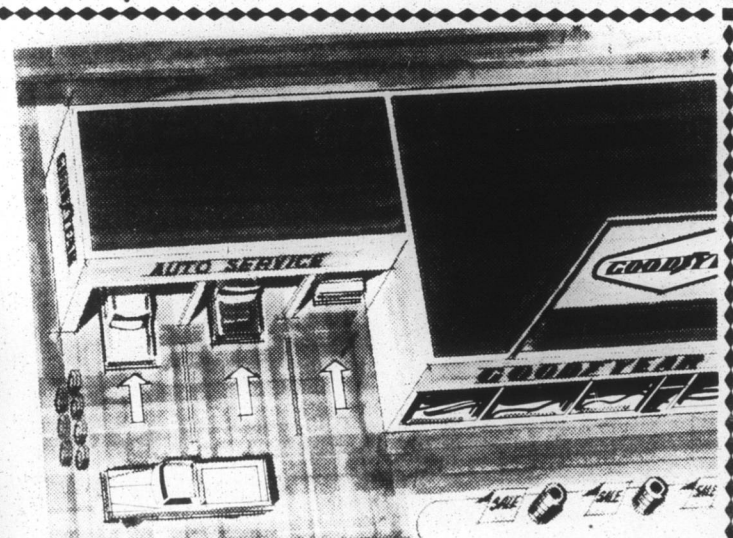
ROBE OF LIFE!  
MANS HONORED THEIR FATHERS IN ANCIENT CHINA WITH GIFTS OF "LONGEVITY ROBES". THESE WERE THOUGHT TO INCREASE THE LIFE SPAN OF THE WEARER. IF SEWN BY A YOUNG PERSON, LIKELY TO LIVE A LONG LIFE!

LOVE--AMERICAN STYLE!  
DADS THIS YEAR WILL BE HONORED WITH GIFTS WORTH MORE THAN A BILLION DOLLARS! AND THE AVERAGE GIFT PRICE IS ONLY \$15.00. A YOUNG MAN WILL BE THE PRESIDENT WILL MEAN NOT JUST DOLLARS BUT SCENTS!

# GOOD YEAR SERVICE STORES

### Free Refreshments

# PARKING LOT SALE



We've taken the best values from our store inventory and marked them down even more. Hurry... don't miss this important sales event.

## SHOP FOR VALUES

GE SELF-CLEANING ELECTRIC RANGE JB42  
• Has oven clock, timer  
**\$244**

GE 2-SPEED WASHER WWA7320  
• 2 wash/spin speeds  
• 5 water temps  
**\$199**

GE BLACK & WHITE TELEVISION SF2103R  
12" diagonal measure picture.  
**\$79**

GE 2-CYCLE DRYER DDE4000N  
Porcelain enamel top and drum.  
**\$149**

GE 18" DIAGONAL MEASURE COLOR TV CD71088G  
Bright bold picture.  
**\$299**

GE CONSOLE COLOR TV LB8712CT  
23" diagonal measure picture.  
**\$399**

### CONSOLE COLOR TELEVISION



LB8716MD The Lisbon II  
• 23" diagonal measure picture  
• Automatic fine tuning locks-in and maintains settings for future use  
• Built-in antennas for UHF and VHF operation  
• GE sharpness control allows adjustment to suit your preference  
• GE RELIACOLOR chassis yields bright, sharp color pictures  
**\$399.95**



WWA7320N GE FILTER-FLO WASHER HIGH POWER WASH ACTION

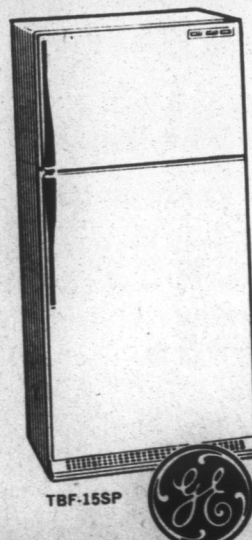
- Heavy duty motor and transmission
- Positive water fill
- High power wash action
- Unbalanced load control
- Corrosion resistant pump
- Three wash cycle selections
- Porcelain enamel finish
- Two wash and spin speed selections

**\$199.00**

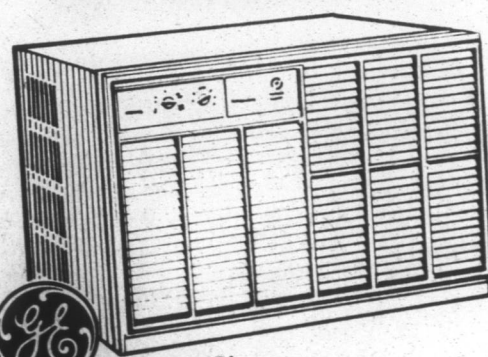
## HURRY... ONLY 2 DAYS TO SAVE

### GENERAL ELECTRIC NO-FROST 2-DOOR REFRIGERATOR-FREEZER

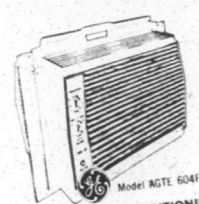
- 14.7 cu. ft. capacity
- Completely no-frost in both freezer and refrigerator
- Giant zero degree freezer holds 148.4 lbs.
- Jet-freeze ice compartment for fast ice cube freezing
- Twin vegetable bins hold 1/2 bu.
- Separate temperature controls in both sections
- Magnetic door seal opens easily
- Removable egg bin holds 18 eggs

**\$269.95**

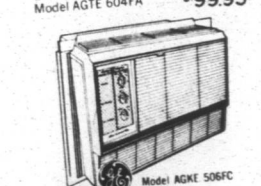
### GENERAL ELECTRIC SUPERLINE AIR CONDITIONER



- 23,000 BTU cooling capacity
- Front air discharge with 4-way direction controls
- Washable, reusable filter
- Slide-out chassis
- 5 automatic thermostat positions

**\$349.95**

PORTABLE AIR CONDITIONING WITH A HANDLE! 43 lbs. — world's lightest! Carry it wherever cooling's needed! 10-Position Thermostat. Luggage-Type Handle. 4000 BTU — 7 Amp — 5.4 EER1 CARRY COOL Model AGTE 304FB **\$99.95**

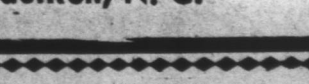


2-SPEED CUSTOM CARRY-COOL Model AGTE 604FA **\$99.95**

FOR AVERAGE BEDROOMS 2-Speeds, 10-Position Thermostat. Air Exchanger, Top Discharge. 5000 BTU, 7.5 Amp, 6. EER1 Model AGKE 505FD **\$139.95**

6000 BTU, 7.5 Amp, 7.2 EER1 Model AGKE 506FC **\$149.95**

**3 WAYS TO PAY AT GOODYEAR**



### CALL ME!



Clarence Britton

Motor  
**Loke Corp.**  
PHONE 482-2191  
EDENTON, N. C.

### PAINT SO DIFFERENT

World-wide patents protect the way it is made



### COLOR YOUR HOUSE SATINTONE

EASIEST... and BEST

YOU GET:

- Surprisingly easy application
- Beautiful velvet-sheen colors that stay fresh
- Tough, flexible paint—let's your house breathe
- Fade and mildew resistance
- Extremely fast dry

**\$7.99 gal.**

COLONY PAINTS... you'll like the difference

1 - 4 Gallons — Net

5 - 9 Gallons — Less 10%

10 Gallons or More — Less 15%

**M. G. BROWN CO., INC.**

EDENTON, N. C.

PHONE 482-2135

1029 North Broad Street — Across From Northside Shopping Center

STORE HOURS:

Monday Thru Thursday:  
8:30 A. M. to 6:00 P. M.

Friday:  
8 A. M. to 8 P. M.

Saturday:  
8:30 A. M. to 1:00 P. M.

Phone 482-8488  
Edenton, N. C.