

For And About Women

Page 5-A THE CHOWAN HERALD Thursday, July 19, 1973

Vows Said In Double Ring Ceremony

The marriage of Miss Millie Monds Dale, daughter of Mr. and Mrs. Emmett Edison Dale of Suffolk, to Jeffrey Vance Bryant, son of Mr. and Mrs. Collis Lee Bryant, Sr., of Suffolk, took place Sunday evening, July 8, at 7 o'clock at West End Baptist Church, Suffolk, Va.

The double-ring ceremony was performed by Rev. Donald J. Dunlap.

Mrs. Lenore Jones presented a program of nuptial music. Mrs. Donald Dunlap was soloist.

The bride, given in marriage by her father and mother, wore a floor-length gown of candelight silk organza-appliqued with venise and peaud'enge lace.

The gown was designed with a high neckline of venise lace and short venise lace sleeves. A fitted bodice was fastened in the back with self-covered buttons and a Cathedral train fell from the waist of the A-line skirt. Her matching veil of silk illusion fell from a Camelot headpiece with waist-length tiers of peaud'enge lace. The bride carried a bouquet of white roses and daisy pom-poms.

Miss Peggy Arlene Dale, sister of the bride, of Jacksonville, Fla., was maid of honor. Bridesmaids were Miss Patricia Methfeasel of Annandale, Va., Miss Brenda Gail Seward of Mechanicsville, Miss Jacqueline Johnson and Miss Jane Uptone Gregory both of Suffolk, Va. Mrs. Faye King of Suffolk was honorary bridesmaid.

Mr. Collis Lee Bryant, Sr., was his son's best man. Groomsman were Barrett Randall Bryant of Shenandoah, Collis Lee Bryant, Jr., of Suffolk, brothers of the groom, Allen Dale Briggs of Edenton, cousin of the bride, William Henry King, Jr. and James Ronald Crumpler both of Suffolk. Mr. Michael Parks of Suffolk and Mr. Jeffrey Bryant of Shenandoah, Va. served as acolytes.

The mother of the bride wore a floor-length yellow crepe gown with matching long-sleeved lace coat. The bodice was topped standing collar. The belted waistline was accented by a jeweled buckle. Her corsage was of green cymbidium orchids.

The groom's mother chose a floor-length coral chiffon gown, designed with a high neckline and caftan sleeves. The sequined waistband joined a softly gathered skirt. She wore

Continued on Page 8

Mental Health Volunteers Honored At Reception

The N. C. Department of Human Resources and the N. C. Department of Mental Health honored the Mental Health Volunteers from throughout the state recently in Raleigh. Mrs. Holshouser honored the volunteers at a reception in the Governor's Mansion during the

afternoon which was followed by a banquet at the Sheraton Crabtree Motor Inn.

Responding to the first lady's invitation from the Albemarle Area were Mrs. Rosemary Dunford from Dare County, Mrs. Elsie Hollowell from Camden County, Mrs. Elsilene Miller from Pasquotank County and Mrs. Angia Wright from Chowan County.

An impressive ceremony was conducted at the Awards Banquet where Secretary David T. Flaherty of the N. C. Department of Human Resources was master of ceremonies. Representing the Albemarle area at the banquet were Mrs. Dunford and Mrs. Hollowell.

Flaherty announced that the present legislation has doubled the mental health budget. He continued by saying one-third of the present Raleigh staff will be relocated in order to expand their talents across the state. It was emphasized that we have 12,000 persons in state institutions. With the additional money, the urgency now is the need for humanization, an area where volunteers play a pertinent role.

Receiving the Outstanding Volunteer Award from the Eastern Region was Mrs. Virginia T. Bailey who has worked at Cherry Hospital, Caswell Center, the Nash-Edgecombe Mental Health Center in Rocky Mount and Nash-Rocky Mount Mental Health Association.

Several pilot programs have been begun successfully in the state with hopes that these may spread throughout. Alcohol remains to be the major problem in mental health in North Carolina. Alcoholism accounts for 45 to 46 per cent of the patients in our state institutions. Alcoholism and Drug Abuse Prevention has developed in the Tideland Mental Health Center. It is an educational approach to be used in the school systems. Step one: personality development, in kindergarten through grade 4 deals with the child learning his own emotions and how to cope with the environment. Grades

five to eight comprise the second part where a general summary of alcohol and drug facts are used with comic books as resource material. In high school, an in-depth knowledge of drugs is probed with "rap" sessions under the direction of a mental health staff member as moderator.

Project Early Aid provides mental health and educational consultation to twenty day care programs in a three county mental health area. The emphasis of the project is on the primary prevention of emotional disorders and

development handicaps in young children. Project Enlightenment offers services to pre-school and first grade children. Its basic objective is to identify children with behavior, emotional or adjustment problems and demonstrate re-education programs. Another project, PACT, Parents and Children Together is a homebound program developed to serve children who are mentally retarded and their parents in the community and the home. Forty-one mental health programs now exist to provide

services throughout the state. The Mental Health Association originated the Operation Santa Claus movement to provide patients with gifts at Christmas. These programs are reaching many and are performing a much needed service for those whom they are able to reach, but they need the help of concerned volunteers it was noted. "A little time and a lot of concern can work wonders for someone in distress," it was said.

Dr. Charles Franklin is the Area Program Director of the Albemarle Mental Health Center.

Satisfaction, modest price top benefits

The girl who's learned to sew in high school, and takes pride in being one-up on fashion trends, is likely to be the bride who opts to sew her own wedding gown. It's one sure way of expressing her own highly developed taste. And it's in line with the simpler, more natural trend of today.

Where is it written that a bride must be done up in satins and lace? Great — if she's the type — and lots of girls are. But even greater is the freedom of choice, in design and fabric, available to the bride who elects to sew her own gown for that great day.

This year's bride may choose from all the light, airy fabrics, like dotted voile, plique, and organdy and leno, that are easy to sew and lovely to look at. Their prices, as the practical-minded miss is sure to note, are a fraction of the cost of luxury fabrics.

The bride's attendants, too, can find equally attractive fabrics and patterns. Sears recommends an airy printed leno (polyester and rayon) in a soft pastel strewn with blossoms, which sells at just \$1.29 a yard.

Since the average pattern calls for under five yards, it's easy to figure the total cost of the dress well within the most modest budget.

And just think of the compliments the bride will garner for the originality and freshness of her wedding party theme.

Few people can stand to hear what they ought to hear.



Mrs. Jeffrey Vance Bryant



ALBEMARLE REPRESENTATIVES — The 1973 state mental health volunteers in Raleigh are shown at the reception in their honor at the Governor's Mansion: left to right, Mrs. Rosemary Dunford of Kitty Hawk, Dare County; Commissioner of the N. C. Department of Mental Health, Dr. N. P. Zarzar; Mrs. Jim Holshouser and Mrs. Elsie Hollowell of Camden County. Mrs. Holshouser and Dr. Zarzar received the honored volunteers at the mansion.

daisy

PRESENTS
A SALE FOR OUR OLD AND NEW CUSTOMERS. COME IN AND GIVE YOUR SUMMER WARDROBE A LIFT



Enola Smith



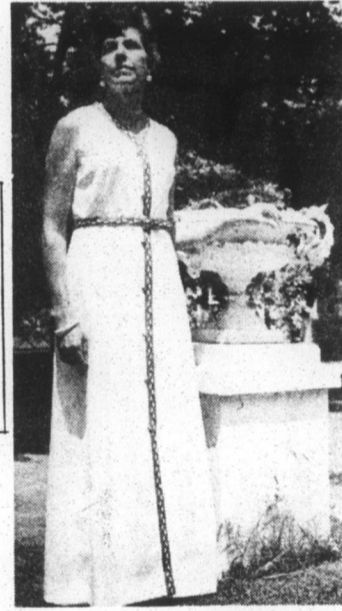
Carolyn Bunch



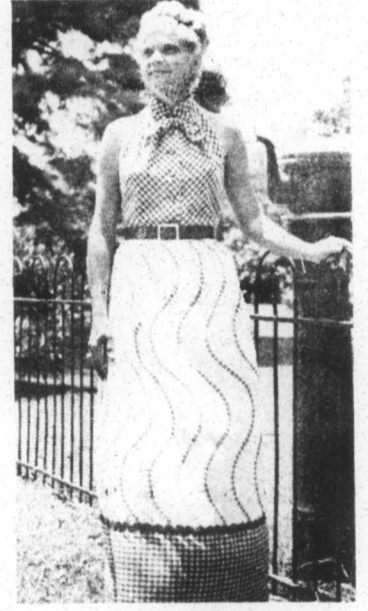
Judy Baker



1/2 PRICE
Blouses
Summer Handbags
Summer Belts



Marsha Crandall



Sally Blount

OUR BETTER DRESSES

Buy ONE at Regular Price ... Get the Second One For \$5.00

\$12.00 RACK

Values to \$48.00

Includes Misses and Junior Dresses
Long Skirts and Blouses

20% Off Our Long Dresses

BERMUDA SHORTS

\$2.50 — \$6.00

Regular \$5.00 — \$16.00

\$5.00 RACK

VALUES TO \$26.00

Includes Dresses,
Blouses, Jeans

We Carry Sizes 6 - 16

SHOPPING HOURS:

MONDAY THROUGH SATURDAY

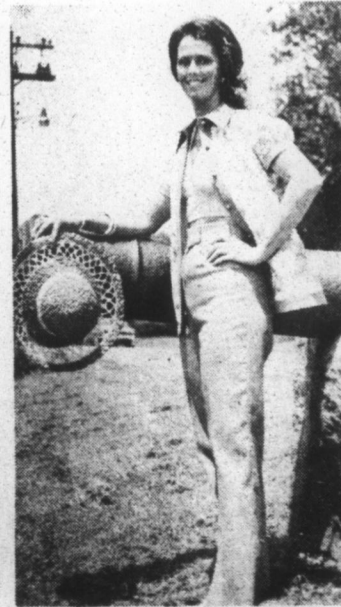
10:00 A. M. — 5:00 P. M.

WEDNESDAY

10:00 A. M. — 1:00 P. M.



Shelby White



Susan Creighton



Marion Hassell

Sportswear — Reductions up to 50%

320 South Broad Street, Edenton, N. C.