

## Liberty Bell Replica Displayed At Academy

A replica of the Liberty Bell was recently displayed for the students of Chowan Academy. The bell is an exact copy of the Liberty Bell in Philadelphia and is owned by the Princess Anne Memorial Park in Virginia Beach. The bell was made from the same cast used to make the bell that President Harry S. Truman presented to all the states in 1950. After the casting, the bell was tuned to the exact tone of the original in Philadelphia. The bell is on the principle tone "E" and the overtone produces and "E" minor cord.

The bell was rung for the students and they were able to hear the exact tone that the original bell made

before it received its famous "crack".

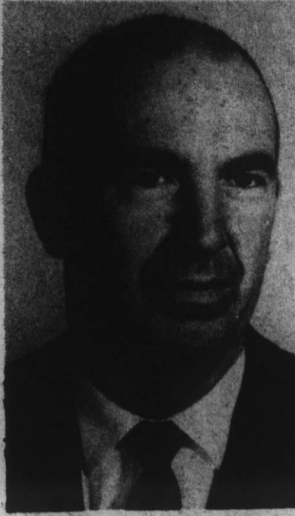
The bronze bell is mounted on its own 8 foot by 21 foot, 3,680 pound decorative trailer. The flags which are on the corners of the trailer depict stages of American history. They included the British Colonial Flag, the original Thirteen-Colony Flag, the Flag state Flag, and the Bicentennial Flag. Henry de Shields coordinated the Liberty Bell replica display with a bicentennial narration.

His experience includes working with such notable people as Veronica Lake, Irene Daly, Hugh Griffith, Montgomery Clift and Elizabeth Taylor. He has

also worked with the famous authority and director of Shakespearean works, Margaret Webster.

As well as several appearances on Broadway, de Shields has received extensive training in children's theatre and workshops.

His performances was appreciated by all who attended. He was sponsored by the Rosewood Extension Club of Pasquotank County.



Supt. C. C. Walters

## Chowan Academy Finish Season 6-12

Chowan Academy's Junior Varsity basketball team finished their 1975-76 season last week in New Bern. For the year, the young Chargers put in the best record of a junior varsity team in three years—3-12.

They should be proud of such an accomplishment, since they were composed mainly of eighth and ninth grade boys, and they competed with teams much larger and stronger.

John Wood, son of Mr. and Mrs. Gilliam Wood of Edenton received All-Conference honors. Tommy Faste, son of Mr. and Mrs. Frie Haste, Jr., and Ar Lane, son of Mr. and Mrs. Archie T. Lane, Jr., both of Hertford, received honorable mention. Congratulations on a job well done.

## C. C. Walters Retires July 1

Supt. C. C. Walters of Perquimans County Schools announced last week that he will retire on July 1. He is a former superintendent of Chowan County Schools.

Clifford Winslow, chairman of the Perquimans County Board of Education, announced the retirement of Supt. Walters and also that the board had named Asst. Supt. Pat Harrell to move into the top educational post in the county.

Supt. Walters has been in Perquimans County for 10 years and has a total of 39 years in public education.

In an announcement he said:

"I've enjoyed the experience of working with the schools in Perquimans County. I've seen many changes take place. We've been through a transition period and I've always tried to work for the good of every single girl and boy in Perquimans County. I think it's time for me the step down.

"I don't think they could find a better man for the job than Pat Harrell and I wish him much success. I will always do what I can to support public education in Perquimans County.

## Minerals Abundant In Mainland China

The Republic of China is one of the world's richest mineral-owning countries, according to a report by the U.S. Bureau of Mines.

In 1975, China was among the top three countries in the production of coal, anthracite, tungsten, antimony, mercury, pyrites and asbestos.

The report noted that China is particularly rich in bituminous coal, anthracite, iron ore, tungsten, manganese, mercury, tin, salt, and asbestos, making the country self-sufficient in most minerals.

## "Nematode Resistance" Not Adequate

RALEIGH — "Nematode resistance" may not be adequate crop protection from nematode attack in North Carolina.

According to Dr. David A. Rickard, chief of the nematode advisory section of the NCDA's Agronomic Division, far too many growers are depending only on "nematode resistant" varieties for nematode control. The two crops most often in danger from such a practice are soybeans and tobacco.

"It is true both soybean and tobacco varieties are available which offer resistance to certain plant-parasitic nematodes," said Dr. Rickard. "However, many fields where these crops are planted contain

nematode species against which there is no resistance.

"For example, Forrest and Pickett 71 soybeans may give good protection to certain root-knot and cyst nematodes, but do not give any protection from lesion, lance, stubby-root, sting, spiral or stunt nematodes. Any combination of these nematodes may be frequently found in North Carolina soybean fields. If they occur in high numbers, any one of these species can do serious damage unless controlled with nematicides before planting," he explained.

There is only one way to find out what the nematode population is in a field before planting - nematode assay. This service is

provided by the North Carolina Department of Agriculture to all citizens of the state. There is a fee of one dollar for each nematode assay sample processed in the nematode advisory lab.

Contact the agricultural extension office in your county for all necessary information and supplies. Properly followed nematode control practices can add many dollars to farm profits, whereas unwise practices, such as the nematode guessing-game, can severely reduce the profit margin.

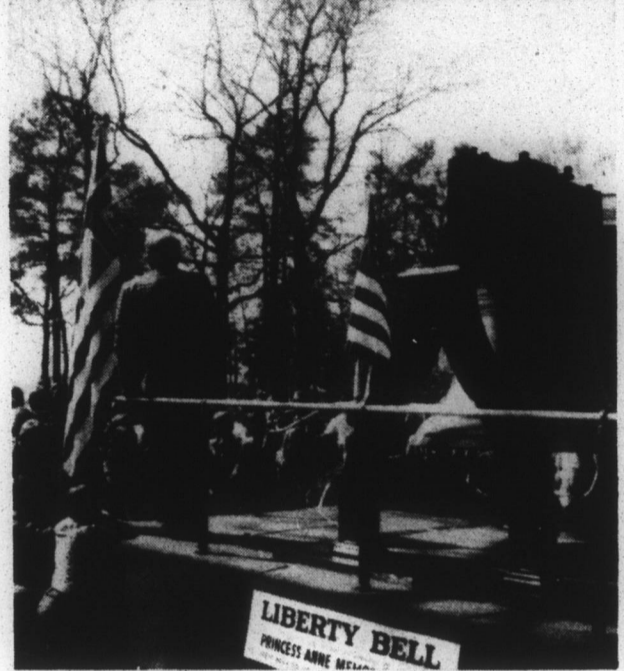
If the world had no fanatics, eccentrics and partisans, life would be rather dull and tiresome.

## Rally For Teen Dems To Be Held Sunday And Sunday

The N. C. Teen Dems will hold their annual Spring Rally at the Royal Villa Motel in Raleigh on Saturday and Sunday. The event will be held to coincide with the Jefferson-Jackson Dinner to give Teen Dems an opportunity to meet numerous state and national Democratic leaders and candidates-elect.

The Teen Dems will sponsor a dance-athon from 3 P.M. Saturday until 12 noon Sunday. Couples are being sponsored by various state and local officials with a \$50 prize awarded to the longest dancing couple.

The Rally will conclude at noon Sunday with an executive committee meeting.



REPLICA OF LIBERTY BELL DISPLAYED

## FLEA MARKET

Chowan County Fairgrounds

Every Saturday

9:00 A. M. TO 4:00 P. M.

BRING ARTICLES TO SALE  
NO ITEMS TOO LARGE OR SMALL

(A \$3.00 FEE WILL BE CHARGED TO ALL SELLERS)

Buyers Admitted Free

Sponsored by  
American Legion Post No. 40

Get In the Swing This Spring . . .

Enroll In an Adult Interest Course at

## College of The Albemarle

1976 Spring Schedule — Department of Continuing Education

### General Interest (Non-Credit) Courses

Course	Begins	Ends	Day	Time	Location
Creative Painting	March 16	May 18	Tues.	7-10 P. M.	Holmes High School
Metric System	March 16	May 18	Tues.	7-10 P. M.	Holmes High School
Typing	March 16	May 21	Tues. and Thurs.	7-10 P. M.	Holmes High School
Upholstery	March 16	May 18	Tues.	7-10 P. M.	Holmes High School
Crafts	March 17	May 19	Wed.	1- 4 P. M.	Arrowhead Beach and Boat Club

FEE FOR EACH COURSE LISTED ABOVE—\$3.00

WANT MORE INFORMATION? Call Mrs. Pauline Travis on Tuesday or Thursday Nights Between 7 and 10 P. M. at 482-8426

Registration is on a first-come, first-served basis and will take place during the first two class meetings ONLY. You must have your SOCIAL SECURITY NUMBER in order to enroll. Courses are open to any person 18 years of age or over who is not enrolled in a high school.

College of The Albemarle Is an Open Door Equal Opportunity Institution

1029 North Broad Street — Across From Northside Shopping Center  
Monday Through Friday 7:30 A. M. to 6:00 P. M. Saturday 7:30 A. M. to 5:00 P. M. Edenton, N. C. Phone 482-8488

**Belk Tyler** DOWNTOWN EDENTON

# FASHION FABRIC SALE

POPULAR IRON-ON EMBROIDERY PATCH

\$1 - 1.30

Embroidery the easy way. Mesh patch vanishes as you iron it on . . . all that remains on the fabric is the actual embroidery. 75% cotton/25% cotton.



FABRIC INSPIRATIONS FROM THE EAST

Sew it in gauze. Breezy, cool, comfortable and colorful. Crinkle textures, open weaves, ombre stripes and conversational prints.

1.99 yd.

100% POLYESTER FABRICS 40" WIDTHS

2.77 yd. Reg. 2.99



Don't Miss Moonlite Madness Sale On Thurs. Night 6:30-10 P. M.

SHOP MON.-THURS. 9:30 - 5:30 FRIDAY 9:30 - 9 SATURDAY 9:30 - 6

SAVE ON RED HEART KNITTING YARN 1.19 Regular 1.49

100% orlon acrylic. Machine washable and dry-able.

SAVE 2.90 COMPLETE SEWING KIT \$5 Regular 7.90

Pins, needles, thimble, tracing wheel and many other sewing essentials.

SAVE \$1 YD. POLYESTER HAIR PRINT FABRIC 1.97 Regular 2.97

100% polyester. In solid, stripe and fancies. 60-inch widths.