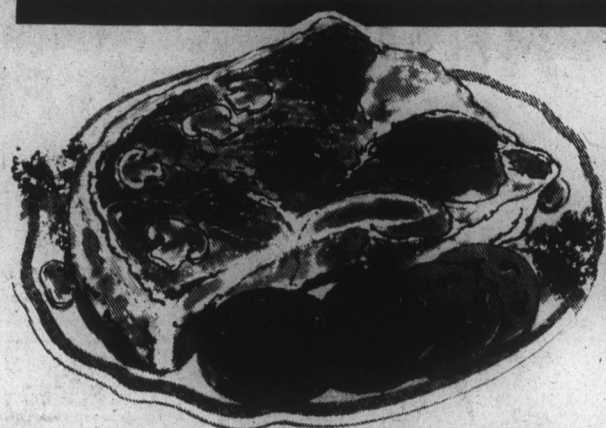


SUPER SAVINGS



PRICES EFFECTIVE THRU FEB. 5 IN EDENTON

SUPER RIGHT QUALITY HEAVY WESTERN GRAIN FED BEEF



SIRLOIN STEAK lb. **\$1.48**

SUPER RIGHT QUALITY HEAVY WESTERN GRAIN FED BEEF
WHOLE BONELESS SIRLOIN TIPS
lb. **\$1.18**
CUT FREE INTO STEAKS & TRIMMINGS

SUPER RIGHT QUALITY HEAVY WESTERN GRAIN FED BEEF
T-BONE STEAK lb. **\$1.58**

SUPER RIGHT QUALITY HEAVY WESTERN GRAIN FED BEEF
LONDON BROIL lb. **\$1.88**
CUT FROM THE SIRLOIN TIP

A&P QUALITY GRAIN FED
FRESH PICNICS lb. **68¢**

A&P QUALITY OLD FASHION
PORK SAUSAGE 2 lb. ROLL **\$1.38**
STAR
BRUNSWICK STEW 32 oz. **\$1.38**

SMITHFIELD BRAND
BONELESS BUFFET PICNIC lb. **\$1.98**
SLICED BACON 1 lb. PKG. **\$1.28**
DINNER FRANKS 1 lb. PKG. **98¢**
PORK SAUSAGE 1 lb. PKG. **78¢**

SUPER RIGHT QUALITY HEAVY WESTERN GRAIN FED BEEF
BONELESS SHOULDER SWISS STEAK
lb. **\$1.38**

U.S.D.A. INSPECTED FRESH
FRYER BREAST QUARTERS lb. **58¢**
FRYER LEG QUARTERS lb. **48¢**

A&P QUALITY ALL MEAT
FRANKS 2 lb. PKG. **\$1.58**
A&P QUALITY
LIVER SAUSAGE lb. **48¢**

STAR
PIMENTO CHEESE SPREAD 15 1/2 oz. **88¢**
SEAFOOD SALE!
TURBOT FILLET lb. **98¢**
H&G WHITING 5 lb. **\$1.98** lb. **48¢**
CAP'N JOHN'S C&P SALAD SHRIMP 8 oz. PKG. **\$1.28** lb. **\$1.18**
RED SNAPPER FILLET lb. **\$1.18**

DEL MONTE SALE!

DEL MONTE
FRUIT COCKTAIL
2 17 OZ. CANS **88¢**

DEL MONTE
YELLOW CLING HALF OR SLICED PEACHES
2 16 OZ. CANS **88¢**

DEL MONTE BARTLETT
PEAR HALVES
2 16 OZ. CANS **88¢**

DEL MONTE
MANDARIN ORANGES
2 11 OZ. CANS **88¢**

DEL MONTE
CUT GREEN BEANS
3 16 OZ. CANS **88¢**

DEL MONTE
CREAM STYLE OR WHOLE KERNEL GOLDEN CORN
3 17 OZ. CANS **88¢**

DEL MONTE
CATSUP
2 14 OZ. BTL. **88¢**

A&P
COFFEE CREAMER 16 oz. JAR **88¢**

A&P SALTED OR SPANISH
PEANUTS 1 lb. PKG. **88¢**

GRAPE, ORANGE, TROPICAL PUNCH
A&P FRUIT DRINKS 2 46 oz. CANS **88¢**

A&P COUPON
A&P SUGAR
5 lb. BAG **48¢**
LIMIT ONE WITH COUPON AND \$7.50 ORDER. GOOD IN ALL EASTERN, N.C. STORES THRU FEB. 5. R-64

A&P COUPON
KRAFT MAYONNAISE
32 oz. JAR **88¢**
LIMIT ONE WITH COUPON AND \$7.50 ORDER. GOOD IN ALL EASTERN N.C. STORES THRU FEB. 5. R-62

A&P COUPON
A SUPERB BLEND RICH IN BRAZILIAN COFFEES
EIGHT O'CLOCK BEAN COFFEE
1 lb. BAG **\$1.88**
LIMIT ONE WITH COUPON AND \$7.50 ORDER. GOOD IN ALL EASTERN N.C. STORES THRU FEB. 5. R-63

A&P
SALTINES
2 16 OZ. BOXES **88¢**

CAMPBELL'S
CHICKEN NOODLE SOUP
4 10.75 OZ. CANS **88¢**

ANN PAGE
CAKE MIXES
DEVIL'S FOOD, WHITE, YELLOW
2 19.5 OZ. PKGS. **88¢**
ANN PAGE
FROSTING MIX
CHOCOLATE, LEMON, CHOC. FUDGE, CREAMY WHITE
13 OZ. **83¢**

FRESH BAKERY
JANE PARKER WHOLE OR CRACKED
WHEAT BREAD 2 LOAVES **88¢**
JANE PARKER
CRESCENT RING CAKE 30 OZ. PKG. **88¢**
JANE PARKER
APPLE PIE 22 oz. PKG. **68¢**

COMET ALUMINUM PANS
• BAKE'N ROAST PAN 11.25" x 7.5" x 1.5"
• CAKE PAN WITH CUTTER 9"
• BISCUIT PAN 11 1/2" x 7 1/2" x 1"
• CUP CAKE PAN, 12 CUPS
• MUFFIN PAN, 6 CUPS
• LOAF PAN, 9 1/2" x 5 1/2" x 2 1/2"

YOUR CHOICE 88¢

TIDE DETERGENT
50¢ OFF LABEL
171 OZ. PKG. **\$3.88**

A&P AUTOMATIC
DISHWASHER DETERGENT
35 OZ. PKG. **88¢**

SOUTHERN BISCUIT
FLOUR
PLAIN, SELF-RISING
5 lb. BAG **68¢**
10 lb. BAG S.R. **\$1.29**

Yeoman Leigh In Multinational Naval Exercise

Navy Yeoman Seaman Adonis Leigh, son of Mrs. Sarah Leigh, 301 West Church Street, Edenton, is participating in the multinational naval exercise "Caribex 1-77".

He is serving as a crewmember aboard the guided missile destroyer USS Richard E. Byrd, home ported in Norfolk, Va.

The exercise is under the overall supervision of Vice Admiral John J. Shanahan, USN, the Commander of the U. S. Second Fleet. The tactical commander for "Caribex 1-77" is Rear Admiral Thor Hanson, USN, the commander of Cruiser-Destroyer Group Eight.

The five-week exercise is being conducted off the East Coast of the United States and in the Caribbean. Navy and Marine units from the U. S., United Kingdom, Canada, Brazil and the Netherlands have joined for readiness training in anti-submarine warfare anti-air defense, plus amphibious and task group operations.

The final event of training will be an amphibious landing at Onslow Beach, during the last week in February.

A 1974 graduate of John A. Holmes High School, he joined the Navy in November 1974.

Gill Accepts NCSU Post

Edwin M. Gill, former State Treasurer for 24 years, has been named an adjunct professor of humanities at N.C. State University, Chancellor Joab L. Thomas announced last Wednesday.

The announcement was made at a luncheon of university administrators, liberal arts faculty and foundations officers at the NCSU Faculty Club.

Gill, whose career in government extends over almost half a century, did not seek re-election in 1976 as treasurer. He announced last spring that he would retire from public life.

In December the bankers of North Carolina held a testimonial banquet for Gill and announced an endowment of \$150,000 for a distinguished professorship at N.C. State University, the Edwin M. Gill professorship in business management. The University expects to appoint a leading economics and business educator to the professorship this year.

In announcing Gill's appointment, Chancellor Thomas said: "It amazes me that Mr. Gill has escaped getting into the academic world for as long as he has. He is a natural scholar and humanist, a Renaissance man."

Executive Mansion Opens To Visitors

Gov. and Mrs. Jim Hunt have announced visitors hours for the Governor's Mansion. Beginning February 1, the mansion will be open to visitors from 10 A.M. to 11:30 A.M. and 1:30 P.M. to 3 P.M. Tuesday through Friday.

Saturday visiting hours will be considered in the future, perhaps once a month. Extensions of visiting hours may be arranged when it is convenient, and when there is apparent need.

Students of all ages are welcome at the mansion, provided they are accompanied by a sufficient number of adults. Tours of the mansion should be arranged through the State Visitors' Center, 733-3456.

Arthritis Sufferers: WAKE UP WITHOUT ALL THAT STIFFNESS!

New formula for arthritis minor pain is so strong you can take it less often and still wake up in the morning without all the pain's stiffness. Yet so gentle you can take this tablet on an empty stomach. It's called *Arthritis Pain Formula*. Get hours of relief. Ask for *Arthritis Pain Formula*, by the makers of *Anacin* analgesic tablets.