

Tobacco Warehouse Designations Begin March 7

FLUE-CURED TOBACCO
The sign-up period for flue-cured tobacco growers to designate warehouses for 1977 will begin on March 7 and run through April 8. All producers are urged to make arrangements as soon as possible. In the past some producers have had to wait in line in the last few days of the sign-up.

The designation program for this year continues the new system initiated in 1974. This program has brought about a drastic change in the process of marketing as it has been known in the past. Most farmers feel this new system has relieved much of the congestion of past years.

Under the system, growers must designate warehouses at which they wish to sell before the sales season opens to be eligible for price support. Growers are limited to warehouses within a 100-mile radius of their county seats. Any amount of the 1977 crop can be designated up to 110 per cent of this year's farm quotas.

If additional poundage of flue-cured tobacco is leased to the farm, the grower may designate at the time the lease is filed. Producers may redesignate after the markets are open. These redesignation periods will be announced at a later date.

A list of the eligible warehouses at which they will be eligible to designate is available at county ASCS offices.

The U.S. Department of Agriculture (USDA) on February 28 announced it is considering changes in marketing quota and price support regulations of the flue-cured tobacco program.

These changes are being considered after allegations of abuses in the program—particularly related to production and marketing of tobacco outside a farm's quota—were brought to USDA's attention in a series of public meetings. During the meetings, individual farmers, farm organization representatives, and members of the tobacco trade stated they felt that many farmers produce substantially in excess of their quotas and illegally dispose of the excess. The belief was also stated that high flue-cured tobacco leasing costs could be attributed, in part, to speculation by some producers.

The changes being considered are (1) eligibility requirements for approving the lease of marketing quotas filed after June 14 of any year and (2) establishing compliance with acreage allotments as

a condition of price support eligibility. Under the first change, a farmer could only lease out a quantity of quota equal to the difference between the expected production on the acres he actually plants and the production on those acres. Under current regulations, a farmer can lease out a quantity equal to the difference between expected production on his total allotment and the actual production on the acres planted.

Leases filed after June 14 would also be disapproved if the quantity stipulated in the lease exceeds the difference between the receiving farm's quota and the amount of tobacco it has on hand to market. Under current regulations, there is no limit on the amount of quota a producing farm may receive.

June 14 is used as a cut-off date because of limiting factors in current legislation that become effective on that date and because by that time, a producer should have a nearly-accurate estimate of his production and would, therefore, have no reason to acquire an amount of quota later than the estimated production.

Under the second considered change, a farm on which the certified or measured acreage planted to flue-cured tobacco ex-

ceeds 107 per cent of the farm acreage allotment would be ineligible for price support and would receive a marketing card marked "no price support" to so indicate. (Marketing cards are documents issued by the Agricultural Stabilization and Conservation Service which stipulate what quantity of tobacco a producer may sell without penalty and indicate a producer's eligibility for price support.) Under current regulations, price support is made available without regard to actual acreage planted.

If USDA goes ahead with formal proposals, the changes will be set forth in detail in Federal Register with the public invited to express its comments and recommendations. No decisions will be made with respect to the proposed changes until such a notice has been made and responses evaluated.

Environmental Concern Areas Meeting Topic

The N.C. Coastal Resources Commission will meet at the Blockade Runner, Wrightsville Beach March 16, beginning at 9 A.M.

The commission will give further consideration to material regarding designation of Areas of Environmental Concern (AECs) in light of comments received thus far from local government officials, and will finalize the permit coordination recommendations to the General Assembly.

Other items to be discussed will include: procedures for upcoming public hearings on AECs in the 20 coastal counties; status of local implementation and enforcement planning; status of State Management Plan development; and the Carteret County Land-Use Plan.

For further information you may contact the Executive Secretary's Office in Raleigh.

Peoples Bank Assets Rose 14 Per Cent

ROCKY MOUNTY — "1976! A year of reflection and celebration! We can celebrate the very best year in the history of the bank," was the remark Peoples Bank President William H. Stanley used in his address to the Bank's shareholders at the annual meeting held on February 23. Citing a new upsurge in self-confidence among the people, Stanley told the shareholders that a re-emphasis of basic values coupled with this new confidence would be the probable solution to economic woes rather than dependence upon government.

According to Stanley, the bank achieved new heights in profit and loss statement figures and new heights in major balance sheet categories.

Stanley reported that loans totaled \$150,197,000 in 1976 compared to \$128,877,000 in 1975, an increase of 17 per cent.

Assets rose to \$279,587,000, a 14 per cent increase over the \$246,064,000 reported at year-end 1975. Total deposits increased from \$223,374,000 in 1975 to \$251,929,000 as of December 31, 1976, a growth of 13 per cent.

Stanley also reported that income before security gains rose to \$2,667,000 in 1976, an increase of 8 per cent over the 1975 total of \$2,470,000 or per share earnings of \$3.36 compared to \$3.11 reported last year. Net income after securities transactions totaled \$2,716,000 or \$3.42 per share at year-end compared to the 1975 earnings of \$2,486,000 or \$3.13 per share. After adjustment for the stock dividend of 20 per cent paid in November, total dividends increased by 10 per cent or \$93 per share in 1976 compared to \$85 in 1975.

Peoples Bank now offers its services through 39 locations in 23 communities.

Canned fish can be kept unopened on the cupboard shelf for one year. After opening, store in a plastic container in the refrigerator for up to four days.

'Jefferson-Jackson' Rally Scheduled

RALEIGH — N.C. Democrats will gather en masse in Raleigh for a "Peoples' Jefferson-Jackson Celebration", April 30. The event, first held in 1930, has become a traditional rallying point for the party and is one of several events held annually to raise party funds.

Special emphasis will be placed upon wide participation by all party workers, and the usual \$50 per person cost has been lowered to \$20 and will include both the afternoon reception and "J-J" dinner. Gov. Jim Hunt has expressed his desire that the "J-J" program format be arranged so that all Democratic Party workers could participate in the traditional celebration.

Plans call for holding the reception at the Arts and Crafts Building at the State Fairgrounds, followed by a barbeque dinner and program at Dorton Arena.

State Democrats have launched an effort to bring Vice President Walter F. Mondale as the main speaker for the "Peoples' Jefferson-Jackson Celebration."

"We are optimistic that Vice President Mondale will come to North Carolina to be with us for this special celebration," says Party Executive Director Steve

Glass. "It is the governor's wish that all North Carolina Democrats have the opportunity to come to Raleigh and enjoy the "J-J" with him and the vice-president."

The N.C. Young Democrats will sponsor a dance on Friday evening preceding the Saturday "J-celebrations." On Saturday morning at 9:30 o'clock, Wake County Democratic Women will host their traditional breakfast also at the Hilton Inn in Raleigh.

Party coffers, seriously drained in the '76 campaigns which culminated in overwhelming Democratic victories at all levels in November, must be replenished to provide resources for maintaining that momentum.

State Chairman Mrs. John L. McCain, has called upon

her fellow Democrats to "support the "Peoples' Jefferson-Jackson Dinner as never before, and help us lay the foundation for a successful campaign at all levels in '78."

Don't overload electrical outlets with high wattage appliances—1600 watts is the limit for each electrical circuit.

ANBESOL® KILLS MOUTH PAIN ON CONTACT

Denture pain, toothache, cold sores, teething pain, relieved for hours.

When minor mouth pain strikes use Anbesol, the pain killer. Anbesol, with three anesthetics, soothes irritated nerve endings, deadens pain. Helps prevent infection, too. Use as directed for hours of relief.

Clothes Closet

Bank of North Carolina Building

(SECOND FLOOR)

MONDAYS AND THURSDAYS

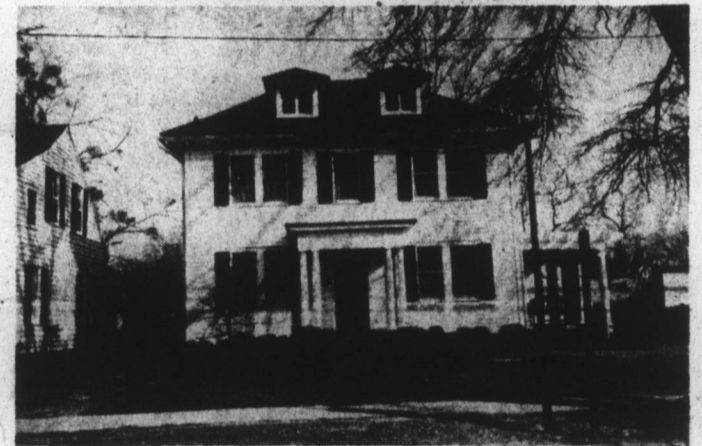
2 P. M. TO 5 P. M.

(Nominal Charge For All Items)

SPONSORED BY CHURCHES OF EDENTON

FOR SALE

TWO STORY HOUSE
109 SOUTH BROAD STREET
OVER 3000 SQUARE FEET LIVING SPACE
Price \$15,000.00 As Is
YOU MOVE IT TO THE LOT OF YOUR CHOICE



CONTACT
R. ELTON FOREHAND AGENCY
PHONE 482-2101

THE STAFF OF
SWINDELL-BASS FUNERAL HOME

OFFERS
SYMPATHETIC,
UNDERSTANDING
SERVICE

Hiway 32N Phone 482-4486

DAVID BASS, MGR.

MARION SWINDELL

LARRY SWINDELL

JOHNNIE CURRAN

"If I could do it over again, I'd get more broiler houses sooner. And I'd build them bigger."

Perdue and I go back 16 years. And I have to admit I've made some good money on chickens. A lot more than I've made on farming.

When I started in 1961, I had to work off the farm. But gradually the chickens started bringing in enough money for me to stay at



Lloyd Cash - Millsboro, Delaware

home and tend the row crops and the broiler houses too.

Today I'm growing 56,000 chickens for Perdue. And keeping up with 80 acres of row crops on the side.

But we sure make a lot more money on the chickens than we do on the farming.

If you don't believe it, check my records. It's all there in black and white.

Perdue has meant everything to me. To my family.

And to a lot of other farmers in my area.

.....
Please send me more information on Perdue Broiler Programs.
Name _____
Address _____
City _____ State _____
Zip _____ Phone _____
P.O. Box 753, Ahoskie, N.C. 27910, (919) 332-8111
.....

