

**A&P is a butcher shop**

A&P QUALITY HEAVY WESTERN GRAIN-FED BEEF

# SIRLOIN STEAKS

PORTERHOUSE OR T-BONE STEAKS \$1.88 LB.

# \$1.68

LB.

U.S.D.A. INSPECTED FRESH FRYER

# BOX-O-CHICKEN



# 38¢

LB.

A&P QUALITY HEAVY WESTERN GRAIN FED BEEF

# BONELESS TOP ROUND

WHOLE 14 TO 18 LB. AVG.

CUT FREE INTO BONELESS TOP ROUND ROAST, STEAKS AND TRIMMINGS

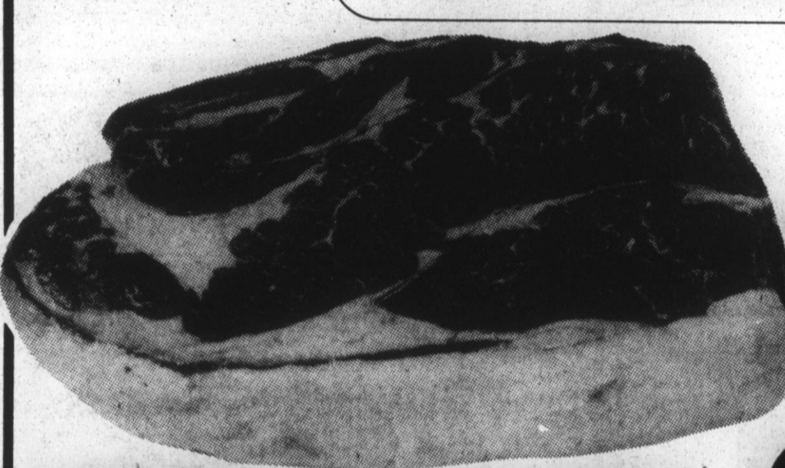
# \$1.38

LB.

PRICES EFFECTIVE THRU SAT., APR. 8 AT A&P IN

# MONEY SAVING 88¢ SALE!

**A&P is a butcher shop**



A&P QUALITY HEAVY WESTERN GRAIN-FED BEEF

# BONELESS ROAST

CUT FROM THE CHUCK

# 88¢

LB.

A&P QUALITY CORN-FED

# PORK CHOPS

ASSORTED PACKAGE

# \$1.28

LB.

A&P QUALITY HEAVY WESTERN GRAIN FED BEEF

# ROUND STEAK

# \$1.38

LB.

- A&P is a country farm pork shop**
- RIB OR LOIN CENTER CUT PORK CHOPS LB. \$1.58
  - BONELESS CENTER CUT PORK CHOPS LB. \$1.98
  - MEATY PORK BACK RIBS LB. \$1.78
  - BONELESS RIB PORTION PORK ROAST LB. \$1.58

- A&P QUALITY HEAVY WESTERN GRAIN-FED BEEF
- GROUND ROUND 3 LB. OR MORE LB. \$1.18
  - A&P QUALITY SLICED CALVES' LIVER LB. \$1.18

- A&P is a seafood shop**
- A&P BRAND BATTER DIPPED FISH-N-CHIPS 1 LB. PKG. \$1.18
  - A&P BRAND BREADED FISH SANDWICH PORTIONS 14 OZ. PKG. \$1.18
  - A&P BRAND BREADED FISH-N-CHEESE PORTIONS 10 OZ. PKG. \$1.18

- A&P is a sausage shop**
- TALMADGE FARM BRAND FRANKS OR SLICED 2 12 OZ. PKGS. BOLOGNA ONLY 88¢
  - A&P BRAND SLICED LUNCHEON MEAT OR SLICED COOKED SALAMI NEW! 12 OZ. PKG. 98¢
  - A&P BRAND SLICED MEAT, BEEF, OR THICK BOLOGNA 1 LB. PKG. 98¢
  - A&P BRAND SLICED LUNCHEON OR MEAT BOLOGNA OR COOKED SALAMI OR BEEF BOLOGNA OR PICKLE LOAF 8 OZ. PKGS. YOUR CHOICE 68¢

- A&P is a poultry shop**
- U.S.D.A. INSPECTED FRESH FRYER CHOICE PARTS COMBINATION PACK LB. 78¢
  - U.S.D.A. INSPECTED FROZEN CORNISH HENS LB. 88¢

**We pick the best groceries**

HUNT'S KETCHUP

LIMIT ONE WITH ADDITIONAL \$7.50 ORDER

32 OZ. BTL.

# 58¢

- A&P INSTANT NON-DAIRY COFFEE CREAMER 16 OZ. JAR 88¢
- ANN PAGE ELBOW MACARONI OR REG. OR THIN SPAGHETTI 3 LB. PKG. 98¢
- ANN PAGE • REGULAR WITH MEAT OR WITH MUSHROOMS SPAGHETTI SAUCE 32-OZ. JAR 88¢

YUKON CLUB COLA OR GRAPE OR ORANGE

6 12 OZ. CANS

# 88¢

SULTANA — WITH TOMATO SAUCE

PORK AND BEANS 2 37 OZ. CANS \$1.00

WE HAVE IT! THE ALL NEW SIZZLING CANDY (5 PACK ONLY 99¢)

SPACE DUST ORANGE GRAPE CHERRY EACH PACK ONLY 20¢

(13¢ OFF LABEL)

LUX LIQUID DISHWASHING DETERGENT YOU PAY ONLY 22 OZ. BTL. 78¢

**We pick the best frozen foods**

SEALTEST ICE MILK

# LIGHT N' LIVELY

1/2 GAL. CTN.

# 98¢

SEALTEST SMACKER ICE CREAM SANDWICHES 6 CT. PKG. 88¢

A&P REGULAR OR CRINKLE CUT FROZEN FRENCH FRIES 5 LB. BAG. \$1.68

SALISBURY STEAK, SLICED BEEF WITH GRAVY, MEAT BALLS OR LASAGNA

FREEZER QUEEN MAIN DISH ENTREES 15 OZ. PKG. 88¢

MORTON FROZEN MEAT PIES BEEF CHICKEN TURKEY 3 8 OZ. PKGS. 88¢

HAMBURGER, PEPPERONI, OR SAUSAGE FROZEN G&W PIZZAS 11 1/4 OZ. PKG. 78¢

SUNSHINE CHEEZ-ITS 16 OZ. PKG. 77¢

NABISCO NILLA VANILLA WAFERS 12 OZ. PKG. 57¢



**We pick the best dairy products**

A&P QUALITY LOOK-FIT YOGURT ASSORTED FLAVORS 4 8 OZ. CUPS 88¢

A&P HOMESTYLE BISCUITS SWEET MILK OR BUTTERMILK 6 8 OZ. CANS 69¢

CHEE-O-BIT CHEESE SPREAD LOAF 2 LB. PKG. \$1.98

A&P 9 TO 16 OZ. AVERAGE WEIGHT IN CHUNKS LB. SWISS CHEESE \$2.19

**CPA Association Chapter OK'ed**

Local Certified Public Accountants have recently received approval from the Board of Directors of the N.C. Association of Certified Public Accountants for the formation of the Albemarle-Outer Banks Chapter. Charter night is scheduled to be held in Elizabeth City on June 13, to be attended by approximately 30 local CPAs and various state association officials and other dignitaries.

The new chapter will serve CPAs practicing within a 10 county area and plans are being formulated for making it the most active chapter in North Carolina. Outstanding interest has been shown by CPAs and those other professional accountants qualifying for membership. While Elizabeth City will be the headquarters for the new Chapter, plans are to rotate meeting places throughout the area.

Prior to obtaining approval for the establishment of the chapter, numerous hours were spent in making feasibility studies, including two formal meetings held in Elizabeth City. The efforts were primarily spearheaded by W. Speight Burrus, the senior principal in the CPA firm, Burrus, VanLandingham & Associates, P.A., in Elizabeth City.

At the recently held organizational meeting, board members and officers were elected, to serve through June 30, 1979, as follows: Burrus, president, Edgar Johnson of Kill Devil Hills, president-elect; J.P. Timberlake, III, of Edenton, secretary; William Hedgepeth of Elizabeth City, treasurer; Jack L. Adams of Kitty Hawk, and Ollin Sykes of Edenton, directors.

The professional group feels that the formation of this chapter (one of nine in North Carolina) represents a tremendous accomplishment for North-eastern North Carolina. The presence of this rather large number of CPAs and other qualified professional accountants in active practice in the area attests to the present and anticipated future economic growth in the area.

**Peanut Demand Is Fairly Light**

Southeastern Section Demand for Southeastern grown runner type peanuts was fairly light during the week ending March 30. Trading was very slow due to reluctance of shellers to offer peanuts other than for nearby delivery positions. Prices declined slightly. Most shipments were made as scheduled. Land preparation was very active but planting was limited. Prices paid per pound for shelled runner peanuts sold on an FOB shipping point basis for April shipment were for Jumbo 38 1/2 cents; Medium 35 1/2 cents; and U.S. Splits 34.

Virginia-North Carolina Section — Demand for Virginia and North Carolina grown peanuts was fairly light during the week ending March 30. Trading was slow. Shellers were reluctant to offer peanuts other than for prompt or April delivery. Sales were too few to establish the market. Land preparation continued in some sections. Planting had not begun yet.

Southwestern Section — Demand for Southwestern grown peanuts was fairly good during the week ending March 30. Trading was slow due to limited offerings. Prices were about unchanged. Truck shortages delayed shipments. Planting continued at active levels in South Texas. Soils were dry and pre-irrigation continued. Newly emerging stands were in good condition.

**COUNSELOR'S SCHEDULE**

Hazel Tayloe, Job Corps counselor, will be at the Chowan County Department of Social Services during the morning hours of April 26.

Store Hours: 8:30 to 9:00 P. M. Monday thru Saturday — 12:00 to 6:00 P. M. Sunday