

# Local Church Anniversary Is Recalled

By REV. GENE ASBILL  
Warwick Baptist Church,  
located on N.C. 32 north at the  
Gates County line, celebrated its

125th anniversary on Sunday,  
Nov. 30, 1986.  
Prior to the Civil War, probably  
in the early 1850's, the people in

upper Chowan County and lower  
Gates County didn't have a  
church, but attended religious ser-  
vices under oak trees near War-  
wick Swamp which separated the  
two counties.

On October 25, 1859, land was  
purchased from J.T. Jefferson  
Mitchell for \$1 for the sole purpose  
of erecting a house of worship.  
Warwick Baptist Church was  
organized in 1861. The mother  
church of Warwick is Ballard's  
Bridge Baptist Church, organized  
in 1781.

The first house of worship was  
a small frame house built by its  
members with Ephriam Bunch  
and Moses White as overseers.  
Bunch, licensed to preach the  
gospel, became the church's first  
pastor and was later ordained by  
Warwick Baptist Church.

The first Bible (printed in 1859)  
and the first Communion service  
were given to the new church by  
James Outler Wright. These are  
encased in the church's vestibule,  
placed there by James O. Wright  
in memory of his grandfather.

The first church building serv-  
ed as the house of worship until it  
could no longer accommodate  
those attending. A new building  
was begun in 1905. On January 5,  
1964, a new educational wing was  
dedicated and another wing was  
dedicated on September 27, 1981.

Much work has been done on the  
church. The exterior of the sanc-  
tuary has been faced with brick;  
a front porch has been added with  
columns and flagstone flooring;  
and a new steeple is in place. In-  
terior work included padding of  
pews, repainting of the sanctuary  
and new sanctuary lighting which  
was installed prior to the anniver-  
sary celebration.

I would like to call particular  
attention to Mrs. Hazel Blanchard,  
our historian. She really worked  
hard for the anniversary  
celebration.

The celebration was attended  
by the following former pastors:  
Rev. James Davenport, retired  
from the Manteo Baptist Church;  
and Rev. Don Phillips, currently  
pastor of the Bethel Baptist  
Church in Statesville, N.C.

A rededication service, with the  
former pastors was held on Nov.  
30 from 11 to 12.

After the morning worship ser-  
vice a dinner was held in the  
fellowship hall which consisted of  
13 tables of food prepared by the  
ladies with loving care, and en-  
joyed by some 300 people!

After dinner, dessert and tours  
of the church, everyone gathered  
back in the main sanctuary for a  
singing service with music by Ben  
Blanchard, Shelia Ward and  
Russell Blanchard. Songs were  
done by the church choir, Marilyn  
Pavey, the Sun Shine Kids, Renee  
Stallings, Men Chorus, the Youth  
Choir, Donna Harrell and Gary  
Byrum.

These are exciting times at  
Warwick. People are united to the  
call to "make disciples of all  
men". There is a deep desire by  
our church to be the Light House  
in this community. If you have no  
church home, we invite you to  
worship with us! We invite you to  
come and visit with us anytime  
you're in our area!

## Support Added

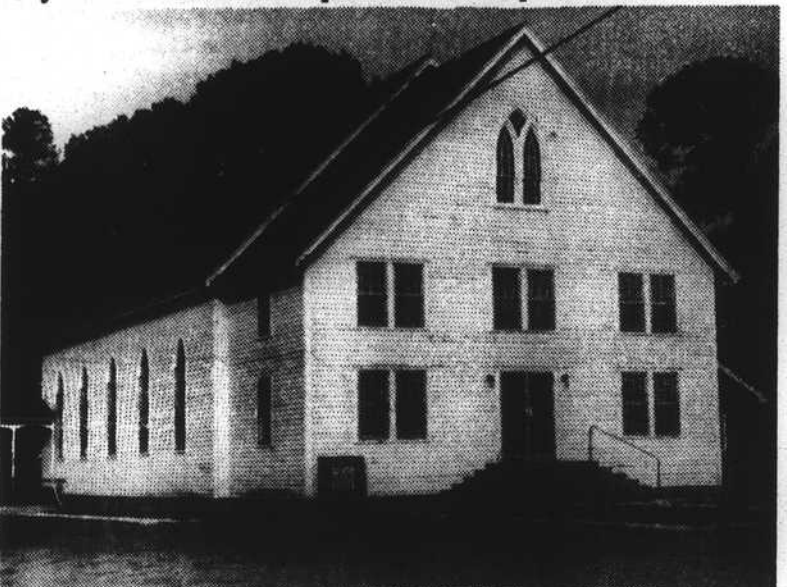
GREENVILLE—The North  
Carolina Scottish Rite Masonic  
Foundation has increased its total  
support of the Scottish Rite Clinic  
for Childhood Language Disor-  
ders at East Carolina University  
to more than a half-million  
dollars.

In addition to a gift of \$60,000 for  
1986-87, the foundation recently  
gave an additional \$5,000 to the  
clinic. "This additional check  
reflects our high esteem for the  
splendid work that is accomplish-  
ed at East Carolina University,"  
said H. Lloyd Wilkerson, Sov-  
ereign Grand Inspector General  
and Grand Master of Ceremonies  
in North Carolina. To date, the  
foundation's total support  
amounts to \$508,293 with \$280,000  
having been contributed in the  
past five years.

The clinic, a part of the Depart-  
ment of Speech-Language and  
Auditory Pathology (SLAP) at  
ECU, was established in 1972.  
Since that time it has provided  
free diagnostic services for  
children afflicted with neuro-  
logical language disorders and  
dyslexia.



**HAPPY HUG**—Allie Mae White (right) gets a hug at the anniversary celebration as former pastor Don Phillips looks on.



**OLD LOOK**—This was Warwick Baptist Church before its transformation last summer. The building was begun in 1905.

## Extra Grants Are Received

RALEIGH—The Easter Seal  
Society of North Carolina, Inc.  
recently received six major cor-  
porate grants to its capital cam-  
paign to construct a new state  
headquarters facility.

The grants are \$25,000 from  
First Citizens Bank, \$15,000 from  
BB&T (Branch Bank & Trust),  
\$15,000 from First Union National  
Bank, \$15,000 from Southern Bell,  
\$15,000 from the Lance Founda-  
tion, and \$10,000 from Golden Cor-  
ral Corporation. These commit-  
ments put the Easter Seal Capital  
Campaign at 78% of the \$600,000  
goal, according to John Tice, State  
Campaign Chairman.

The \$1.17 million facility will be  
constructed in Raleigh in 1988 and  
will serve disabled people state-  
wide. The Society currently oper-  
ates from two small facilities in  
Raleigh, one leased and one  
owned.

Some 20,000 North Carolinians a  
year are served by one or more  
programs of the Easter Seal  
Society of North Carolina, Inc. in-  
cluding 39 in Chowan County. The  
programs include therapy  
(speech, physical and occupa-  
tional), respite care, adapted  
swim, Camp Easter-in-the-Pines,  
provision of durable medical  
equipment, and support groups  
for persons with stroke, polio,  
Alzheimer's Disease and head and  
spinal injuries.

"The success of this campaign  
will enable Easter Seals to help  
even more disabled men, women,  
and children in North Carolina,"  
said Tice.

The Chowan Herald's  
Classified Ads  
are  
**FAST  
HIGHLY VISIBLE  
DEPENDABLE**

## DR. D.B. STANALAND

WOULD LIKE TO ANNOUNCE AN  
ADDITIONAL OFFICE OPENING ON  
WED., APRIL 1 IN EDENTON

MAKE APPOINTMENTS THROUGH  
THE ELIZABETH CITY OFFICE

DAILY WEAR AND EXTENDED WEAR  
SOFT CONTACT LENSES

**\$70.00**

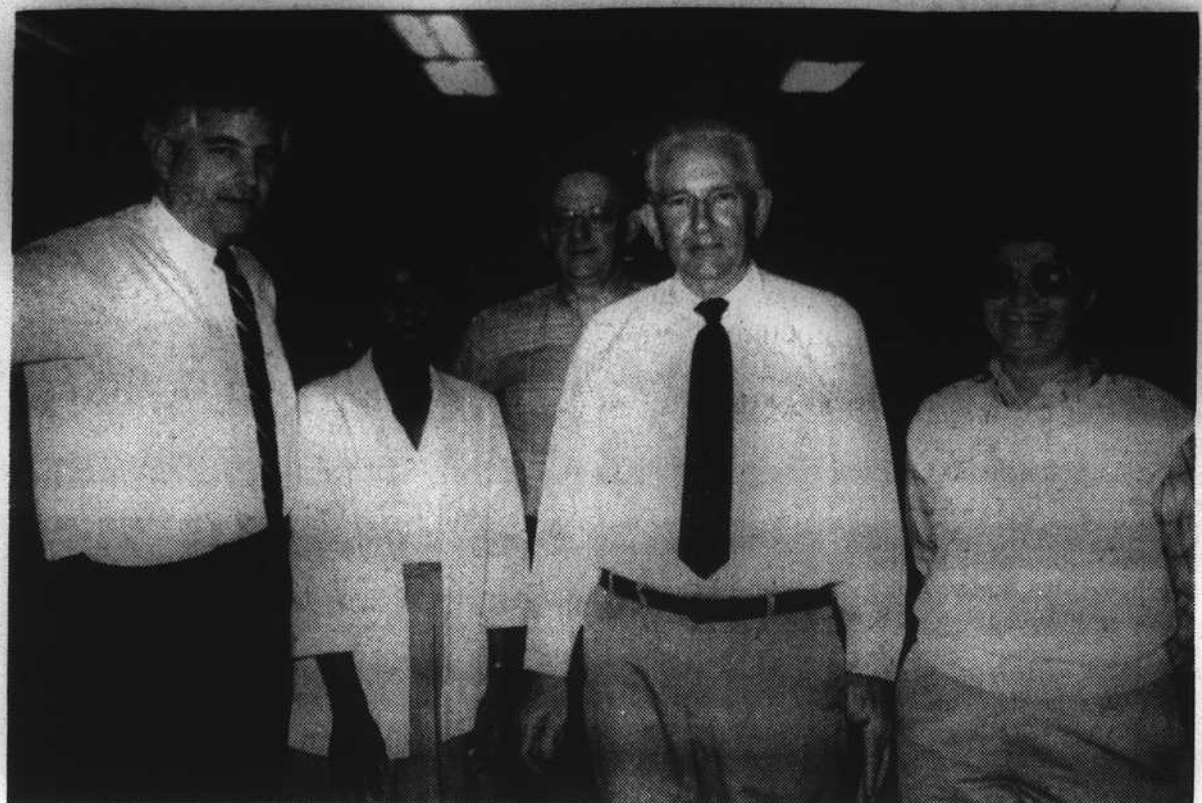
INCLUDES: FITTING, LENSES, CARE KIT  
(TINTED ADD \$10.00)

NOW EVERYONE CAN HAVE THE BLUES  
Introducing Durosoft colors, the first contact lenses that  
can change even the darkest brown eyes to stunning light  
colors of baby blue, emerald green or aqua.

• **50% OFF FRAMES WHEN PURCHASING  
A COMPLETE PAIR OF GLASSES**

EYE EXAMINATION INCLUDING GLAUCOMA TEST  
**\$25.00**

**DR. D.B. STANALAND  
OPTOMETRIST  
ROOMS 203 & 204, NCNB BUILDING  
216 S. BROAD ST.  
EDENTON, N.C. 27932 338-1335  
WEDNESDAY 11:00-6:00 ONLY**



**AWARD OF MERIT**—Employees at Edenton Employment Security Commission have received an award for outstanding performance in fiscal 1985. Workers at the office are Manager Gordon Allen, Judy Bonner, Charlie Skinner, Roy Harrell and Linda Todd.

## ESC Staff Is Recognized By State

Edenton Employment Security  
Commission office has received  
an award of merit for fiscal 1985  
for increased productivity, pro-  
motion in the community and pro-  
viding a viable service to job  
seekers and employers.

Manager Gordon Allen said the  
service placed 1,112 workers dur-  
ing the year, compared to 764 in  
1984 and 822 the previous year.

This ranked the Edenton office  
second statewide in non-  
agricultural individuals placed  
and second in placement produc-  
tivity for all offices of the same  
size in the state.

The local office was also rank-

ed third statewide for all size of-  
fices in total individual place-  
ment productivity and third in  
non-agricultural placement pro-  
ductivity and third in non-  
agricultural placement  
productivity.

Allen said improvements in his  
office had been accomplished by  
developing an employer relations  
program which consisted of better  
prepared employer visits, a  
quicker response to job orders, a  
more thorough file search, a  
revitalized Employer Advisory  
Committee, frequent news ar-  
ticles to highlight local office ac-

tivity and promote services  
available to both employers and  
applicants.

He further stated that, "I was  
very pleased to see the staff  
recognized for their efforts. This  
is a very special award for us  
because it is given by members of  
our professional organization who  
realize the challenges you face  
each day in delivering this type of  
service. It's always nice to be  
recognized by your peers".

Come To Edenton's  
**BIENNIAL PILGRIMAGE**  
**APRIL 24 - 25**

Enjoy touring historic homes, taking buggy  
rides, arts and crafts on the Courthouse Green,  
delicious food, plus outstanding entertainment,  
and much, much more!

**Taylor**  
2 MODERN AUDITORIUMS

Starts Friday —  
Mel Gibson • Danny Glover  
— In — "LETHAL WEAPON" (R)  
Shows Nightly at 8:00 P.M.  
Shows Sunday 3:00 & 9:00 P.M.

— Held Over —  
Academy Award Winner  
Best Picture of the Year!  
"PLATOON" (Rated R)

— Held Over —  
"FROM ANOTHER STAR"  
(Rated P.G.)  
Open 8:45 MATINEE SUNDAY 3:00 P.M.

Why Go-In when the sun  
Goes-Down?

**Yard Lite** UTILITY

R-175M

**ITT LIGHTING**  
Decorator  
Yard Lite DR70H

- Energy Saver!
- Discourages Vandalism and Theft!
- New Compact Decorative Styling with a Bronze Finish.
- Automatic on at Dusk ... off at Dawn!
- High Power Sodium Light — 70 watt.

**77<sup>95</sup>**

**30<sup>95</sup>**

**ITT LIGHTING**  
LISTED

**17<sup>95</sup>**

DR300Q

**Decorator  
Flood Lite**

**73<sup>50</sup>**

**BULB 10<sup>95</sup>**

VISA MASTERCARD

**5% DISCOUNT CASH AND CARRY  
REGULAR PRICED MERCHANDISE**

**SERVICESTAR**  
We can help.

Hardware Lumber Home Centers

W. GLENN ST.  
M. BROWN  
EDENTON, N.C.  
CORONAL ST.  
EDENTON, N.C.

**M.G. BROWN**  
409 W. Queen St. Edt.  
EDENTON, N.C.  
482-2135

OPEN: Mon. - Fri. (7:30-5:00)  
Saturday (7:30-4:00)

Locations: • Katy Marsh • Elizabeth City • Millsboro Shop