

Farm Day adventure is enjoyed

Second grade teachers and students at White Oak Elementary School are educating themselves about the farming community in which they live as well as discovering the different types of products and foods used in everyday life that are derived from locally grown crops in Chowan County.

Through the third annual Farm Day Adventure, sponsored by the North Carolina Cooperative Extension Service (NCCES), students were able to visit local farms during mini-tours to see and touch the crops and animals that they were learning about. The mini-tours included:

A visit to a chicken house owned by Bradley Ward where the students learned about livestock production. While at the Ward farm, the students also touched a lamb and learned about the uses of wool from Marjorie Rayburn, IMP Agent. Livestock Agent Jeff Copeland followed up by showing the students examples of products such as shoes and foods that are produced from livestock.

The students also toured a pumpkin patch (owned by Emmett Winborne Farms). There the students learned from Horticulture Agent Tom Dyson about how pumpkins grow and the various ways pumpkins are used. Prior to the tour of the pumpkin patch, Consumer Education Agents



County Extension Agent Marjorie Rayburn talks with White Oak students about lambs and sheep and products that are made from sheep's wool.

Shari Farless and Eula Jordan, their own individual pumpkin pies. Each student was responsible for making

See FARM On Page 13-A



Lucretia Jones prepares some unique Christmas gifts for sale as part of a class project.

Students selling Christmas gifts

Enterprising students at John A. Holmes High School in Edenton are making unique Christmas gifts for sale as part of a "free enterprise" class experience.

Teacher Sandy Davis and his students have organized to form the Outback Corporation where they are making, marketing, and selling pine floral

arrangements, reindeer pins and magnets, and various sizes of wooden reindeer (with or without lights) for display in homes or yards.

The students are also shell-

ing and packaging pecans. The reindeer pins and magnets are \$2 each; the floral arrangements range between \$6 and \$8 each. The reindeer are

priced at \$8 for an infant, \$16 for a baby, \$25 for a small, \$30 for a medium, and \$45 for a large reindeer with lights. The pecans are selling for \$6 per pound.

If you would like to order an item or need more information, contact Sandy Davis at John A. Holmes High School, 482-8426.

TOYOTATHON

At Perry
Toyota

1999 Toyota Corolla

\$139*



per month

...we'll help you work harder, play longer and look good doing it.

1999 Toyota Camry

\$199*

per month



T5234



1999 Tacoma Pickup

\$299*

per month

1994 Pontiac Grand Am

\$6,995



1992 Chevrolet Beretta

\$3,995



1995 Honda Accord EX

\$14,995



1994 Mercury Tracer

\$7,995



1996 Chevrolet Camaro

\$14,995



1995 Honda Del Sol

\$12,995



1994 Toyota Camry

\$11,995



1994 Toyota Camry XLE

\$12,995



1994 Toyota 4-Runner

\$15,995

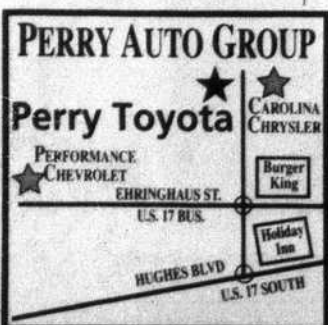


1995 Ford T-Bird V8

\$8,995



TOYOTA Everyday



PERRY
Toyota
of Elizabeth City, NC
1002 Halstead Boulevard
335-4301
800-897-3779

* Payments based on 42 month lease, \$4000.00 down plus acquisition fee \$495, plus first & security, 12000 miles per year. Tacoma \$2000.00 down or 42 month lease, 42 month lease plus acquisition fee \$495 plus first & security. Visuals for display purposes only, styles may vary.

Want to stay informed about community events?
You can when you pick up the Herald weekly!

DONATE TOYS FOR TOTS

Bring either new or items that are in good condition, wrapped or unwrapped. If wrapped, please specify for boy or girl. All toy donations should be delivered to Albemarle Motor Company, Hwy. 32 N, of Edenton before December 23rd. Support Toys For Tots. All toys will be delivered to children in the local area. For information, call Bruce Jones, Jr. at 482-2144.



To Get the
Job
Done
and
Still
Feel
Great,
I Choose
Timberland



ORIGINAL CLASSIC BOOT.

Men's 6" Premium Waterproof Boot.
Classic Timberland. The best boots and
the finest craftsmanship.



482-3906
306 S. Broad St.
Edenton
338-2772
1873 W. Ehringhaus St.
Elizabeth City