

# THE CHOWAN HERALD

Vol. LXIX, No. 19

Published in historic Edenton . . . The South's prettiest town.

Single Copies 50¢

Students at Rotary conference ..... 8-B  
 Chamber holds golf, tennis tourney ... 13-A  
 Dollmaker creates lifelike images ..... 1-B



## Clearing third Habitat house lot

The local chapter of Habitat for Humanity started work on its third house last Saturday when an enthusiastic crew of volunteers turned out to clear the two recently acquired lots in our community. The Town of Edenton parked two trucks near the site. By noon they were fully loaded with the cleared brush and the small mountain of trash that had accumulated at the neglected site over the years. Before clearing continues the house locations will be laid out so only the trees that need to be removed will be cut down. Fred Inglis supervised the clearing project and did most of the heavy cutting. Tony Webb of Webb Land & Timber Services has offered to survey the lots and stake the corners and that should be accomplished by next weekend. Anyone interested in participating in this Habitat project is encouraged to give Jim Robison a call at 482-2686. (Habitat photo courtesy of Phil Lange)

## New safety effort targets children, infant car seats

BY HELEN K. OUTLAND  
 Staff Writer

Sheriff Fred Spruill of Chowan County announces that WHALE (We Have A Little Emergency), a new safety program for small children and infants riding in car safety seats, is now available in our community. Although conscientious parents make sure their young children and babies are secured in a car seat there is one important factor that many overlook, important information on a child or baby should the parent or caregiver driving, or a passenger in, the car be unable to provide any.

Many times law enforcement and EMS personnel encounter a situation such as the following. While driving to the store with her infant daughter, a young mother lost control of her car and crashed into a tree. The mother was knocked unconscious, while the child appeared to be uninjured. Due to her injuries, the mother could not identify herself or her child. The mother was also unable to provide vital medical information about her daughter. The child, due to age, was unable to communicate with rescue personnel. While both victims received the best care possible, the emergency services personnel felt their rescue and treatment could have been more effective and efficient if only they had known information on the child.

"In the event of an automo-

bile accident that incapacitates the adult, rescue personnel can have a difficult time identifying and obtaining vital medical information about any children riding in the car," says a press release from Sheriff Spruill's office. With WHALE an informational label is placed on the back of the child car safety seat. This label provides important information about the child in the seat, such as name, date of birth, medical history, and whom to contact in case of an emergency.

WHALE vehicle and car seat stickers are placed on the rear windows of the car as well alerting rescue personnel to the pertinent information about the child riding in the seat.

"Each WHALE kit contains one car seat informational label, two car seat WHALE stickers, two vehicle window stickers, and one WHALE program brochure with easy to follow instructions for parents or guardians," emphasizes Sheriff Spruill.

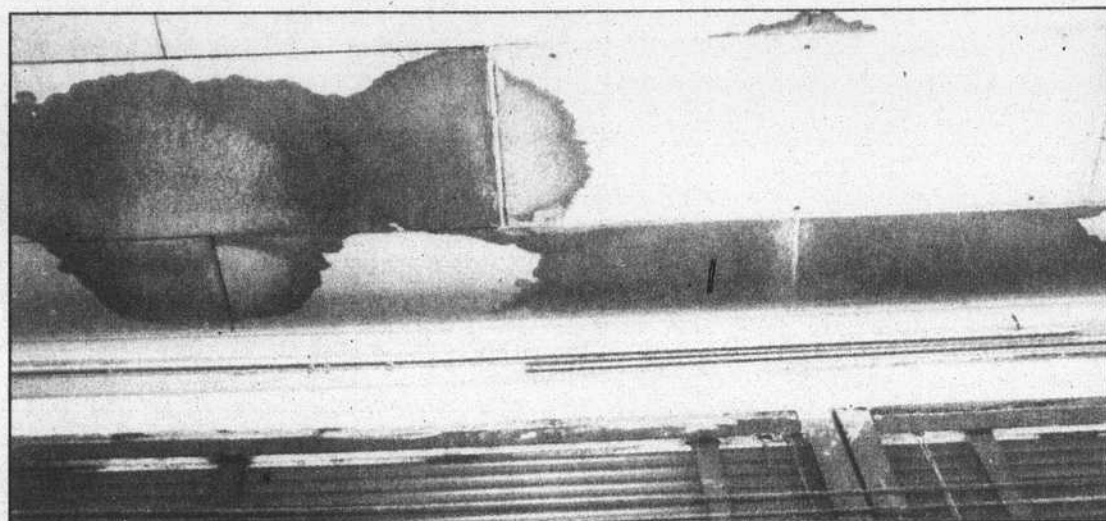
For those concerned about the dangers of personal information being available to anyone, Sheriff Spruill says this: "The information sticker is placed on the back of the where it cannot be seen without physically removing the seat," he begins. "This is not a problem for rescue personnel whose preferred method of transporting a young child is to leave the child in his or her seat. That way the information goes to the hospital with the child."

## County commissioners are asked to transfer school funds

BY HELEN K. OUTLAND  
 Staff Writer

Dr. Allen Smith, Superintendent of Chowan County Schools, went before the Chowan County Board of Commissioners Monday morning, requesting action to authorize the transfer of \$236,656 from the Fund Balance to the Capital Outlay Fund, leaving approximately \$1 in the Board of Education reserves.

Smith is attempting to pull funds together for much needed repairs to John A. Holmes High School. The State General statutes between the county and school board require that a request be submit-



Shown here is water damage to the tiled ceiling and rust around the metal window frames in one of the classrooms at the high school. (Staff photo by Helen Kerr Outland)

ted to the county commissioners for that transfer of funds from the Unappropriated Fund Balance. The Commissioners approved the transfer.

Smith presented photographs and a report to the commissioners outlining a two-phase project, over the next two summers; to make much needed repairs to John A. Holmes High School. According to Dr. Smith's accompanying report, Holmes was built in 1951 and at present is serving 875 students.

Smith's concerns for students and faculty lie in the aging process of the high school and the damages it has incurred from leaks over the

years. Photographs presented by the superintendent showed some of the water damage done to 18 classrooms and two offices representing approximately 4,600. "Within these areas wall surfaces, the corresponding floors, and ceilings have been severely damaged and require immediate attention," said Smith.

The report goes on to say that a special appropriation of one million dollars was made by the Chowan County Board of Commissioners during the 2001-2002 school year to replace the roofs of John A. Holmes and Chowan Middle School.

See FUNDS On Page 8-A

## Edenton Steamers seeking host families for its players

The Edenton Steamers have announced that they are still looking for host families for their summer baseball team made up of all collegiate athletes.

"Because they are collegiate athletes," said Steamers General Manager Todd Hunter, "they cannot be paid for playing baseball during the summer. If the players were paid then they would lose their amateur status. Since the players cannot be paid, they stay with

host families throughout Edenton and Chowan County." Hunter added, "We are searching for about 22 host families. We currently only have 13 host families for this season. We are only three weeks away from our first game and we need your help." A family can take in one player or as many players as they like. "When searching for host families," Hunter noted, "the first we think about are families with kids anywhere

from three to 18 years of age. The players serve as great role models for kids, especially those who love sports. They can serve as bedtime storytellers, babysitters, big brothers, playmates and family members."

The players stay from May 29 to Aug. 9 pending any post-season play. The Steamers are also in search of businesses that willing to employ a Steamer on a part-time basis. To help with either, call Todd Hunter at (252) 482-4080.

## Tickets on sale

Tickets are on sale now for the Chowan Arts Council's 25th Birthday Party, to be held Saturday, May 18, under the tent at the downtown Edenton waterfront, at 6 p.m.

A special "thank-you" to past presidents and past executive directors will be held at 6:30 p.m.

Tickets are available at the CAC Gallery, and from selected merchants. For more details, call 482-8005.

## New editorial feature added to the Herald

The Chowan Herald is pleased to add a new feature to its editorial page, the moderate voice of Cynthia Tucker.

Tucker is editorial page editor of The Atlanta Constitution and a syndicated columnist. She is a frequent commentator on The NewsHour with Jim Lehrer and CNN and Company.

She has been a reporter for the Atlanta Journal and The Philadelphia Inquirer. She graduated from Auburn University in 1976. She serves on the board of the Poynter Institute.



Cynthia Tucker

CHOWAN HOSPITAL  
 University Health Systems of Eastern Carolina

"Nurses Care For America"

National Nurses Week • May 6-12, 2002

Celebrating  
 Our Nursing  
 Staff!!