



AL GROUPS COMING TOGETHER
 FEED FAMILIES — 1B

482-4418

Wednesday, September 30, 2015

50¢

Town approves reduced electric rates

BY REBECCA BUNCH
 Staff Writer

The Edenton Town Council voted unanimously Sept. 8 to lower town customers' monthly cost for utilities.

"Everybody wants to second that motion," noted Councilman Sambo Dixon after the vote.

The reduced retail rates stem from the town's savings on wholesale electricity costs in the wake of a sale of N.C. Eastern Municipal Power Agency power generation assets to Duke Progress Energy.

The plan follows a recommendation from consultants for Raleigh-based Booth & Booth Associates

LLC that the town establish an average 9.4 percent reduction for its customers with those rates expected to remain steady for the next three years, Town Manager Anne-Marie Knighton said.

"You all wanted rate stability," she reminded the council.

According to basic ser-

vice rates approved by the council at the meeting for the town's estimated 3,300 residential customers, a basic residential customer charge of \$10.45 per month has been established effective Sept. 15 plus an energy charge of \$0.11350 to calculate each customer's bill.

According to town of-

ficials, the rate change will be reflected in utility bills customers receive on or after Oct. 10. Information concerning the new rates will be posted on the town's website, they said.

Utility Director Glenn Andersen said that small commercial businesses, public housing and industrial power customers

should also see a reduction in their rates on average of about the same 9.4 percent reduction that will be enjoyed by the town's residential customers.

According to town officials, this marks the first time that electric rates charged to local customers have changed since 2009.

ACES WIN BIG AT HOMECOMING



Edenton defeated Pasquotank 50-22 on the Aces' Homecoming night. See story page 7A.

THE DAILY ADVANCE

Tax credit no dealbreaker for Timbermill

BY REGGIE PONDER
 Editor

A representative of the company developing the Timbermill Wind Energy Project said this week that not having the state's renewable energy tax credit available would not stymie the project's progress.

"We've never counted on the state renewable energy tax credit for this project," said Kevin Chandler of Apex Clean Energy Inc.

The General Assembly recently opted not to extend the state's renewable energy tax credit.

The proposed Timbermill project, a utility scale wind energy generation facility that would be built on farmland and Weyerhaeuser timberland along the Chowan-Perquimans line, has generated controversy in Chowan County largely because of an amendment to the wind energy ordinance in 2013 that increased the allowable height of wind turbines to 600 feet.

A citizens group has obtained more than 600 signatures calling for a "protective wind energy ordinance" that would include such restrictions as a 35-decibel noise limit, a property value guarantee and a one-mile setback from non-participating properties.

Although county officials have for the most part rejected the proposed restrictions, last week the county commissioners adopted a slightly modified version of one of the proposals - a \$50,000 escrow account to cover county costs related to the project.

In addition to the controversy over aesthetics, public health concerns and property values, there also has been some controversy in the community over the role of tax credits in the development of the project.

But the state tax credit has ended, and any local concessions on property tax have yet to be negoti-

See TAX CREDIT, 4A

Albemarle, Carolina Classic merge

From staff reports

Edenton Boatworks LLC has announced the merger of its two boat building brands, Albemarle and Carolina Classic. The new company will be called Albemarle Boats, The Carolina Classic.

Company officials explained that all employees were being retained - and employment applications are being accepted - in what they are calling "an exciting time for Albemarle Boats."

Albemarle Boats will take full advantage of the combined 60-plus years of boat

building experience and history to form a new company with a fresh product offering based on the most successful and best performing models. "We have taken great care to preserve the integrity and history of both brands by combining the logos and marketing styles of the companies into a new, but recognizable look," states President Dell Murphy. The hook that formed the C in the Carolina Classic logo is joined with the traditional script and blue marlin from the Albemarle logo to create the company's new logo.

The focus of the new venture is to build the highest quality Express sportfishing boats on the market, ranging in size from 25 feet to 41 feet. The smaller vessels, the 25, 27, and a brand new 29 Express, will be offered with twin Yamaha outboards. These boats will be sleek, fast, and efficient. The 32, 36, and 41 Expresses will be powered by inboard diesels and will combine superior fishability with the amenities of home. The entire line of Albemarle Expresses will provide a soft,

See MERGER, 4A

FAIR FUN

STAFF PHOTOS
 BY REGGIE PONDER



The Edenton Lions Club, Rocky Hock Lions Club and John A. Holmes High School Leo Club joined forces during the Chowan County Regional Fair to raise funds for the clubs' efforts on behalf of visually impaired persons. Pictured (l-r) are John Guard of the Edenton Lions Club, Whitney Cranford of the Leo Club and Frances Jordan of the Rocky Hock Lions Club.

'Rachel's Challenge' this week

By Michelle Maddox

Students, parents and community members are invited to join the Edenton-Chowan Schools this week in a community event known as Rachel's Challenge.

The school system is



6 89076 44813 0

©2009 The Chowan Herald
 All Rights Reserved

partnering with Trillium NC to offer this program to help address the growing problem of bullying, student isolation, and teen suicide. Through powerful presentations, trainings, community events and professional development, Rachel's Challenge provides the sustainable solution.

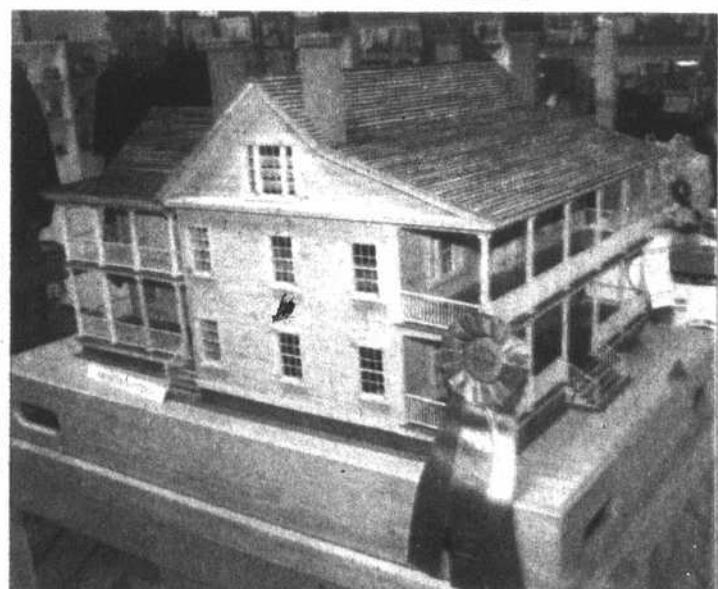
Presentations will be provided for students at John A. Holmes High School on Sept. 30, and for seventh- and eighth-grade students at Chowan Middle School

on Oct. 1. A free community event will be held on Thursday, Oct. 1, at 6 p.m. in the John A. Holmes High School Gymnasium. This event is not recommended for children under the age of 11. Students, parents and community members are invited to attend.

Based on the life and writings of Rachel Scott, the first victim of the Columbine School tragedy in

See 'CHALLENGE', 4A

This model of Somerset Plantation, crafted by Teddy Phelps of Creswell, won Best of Show honors at the Chowan County Regional Fair. See more fair coverage on page 3A, 1B.



EDENTON MOTORS PRESENTS
40TH ANNUAL PEANUT FESTIVAL & BATTLE OF THE BANDS

Sat., October 3rd
John A Holmes Athletic Complex



CHICKEN/BBQ PLATES 11AM-2PM & 4-7PM
 \$9.00 PER PLATE, BY LEON NIXON CATERING



Good food and musical entertainment for all.

COMPETITION BEGINS 2PM / \$8 PER PERSON, KIDS UNDER 10 FREE / FUN/GAMES 10AM-2PM
PROCEEDS WILL BENEFIT JOHN A. HOLMES HIGH SCHOOL & CHOWAN MIDDLE SCHOOL BANDS