

Chamber Commerce Issues Pamphlet

(Continued from page 1)

8. **ANTHREWS DAM**—Another big power dam, affording an outing place with plenty of water. Interesting and entertaining.

9. **SNOW BIRD MOUNTAINS**—Famous as a hunting and fishing ground. The streams of Snow Bird are filled with trout, and the woods are inhabited by game of all sorts, ranging from bear to bear.

10. **YOUNG HARRIS COLLEGE**—This famous institution of education, while in Georgia, is right here with us at Murphy. Its main interest is the development of the whole mountain section in general. The school is well equipped and is worth a day of any one's time on a visit.

The geographical location of Murphy is exceptional. It is connected with the outside world by the only two railroads operating in Western North Carolina. Trains arriving over both roads at 2:30 P. M. bring in the U. S. Mail. It is a remarkable fact that Murphy is the only North Carolina town from which one can, after getting the afternoon mail, drive directly to Asheville, Atlanta, Rome, Chattanooga, or Knoxville in time for supper that same evening. This is of great interest to tourists in that in case of an emergency call to any of these points, it is possible

to drive there within the same day the letter is mailed. Ten miles will cover the difference in distance from Murphy to any of the five mentioned cities.

PUBLIC IMPROVEMENTS AND FACILITIES

1. Free Tourist Camp.
2. Cherokee Park.
3. Municipal and County Fair grounds.
4. Baseball park and grandstand.
5. Electric power plant, Carolina Tennessee Power Company.
6. Murphy Hospital.
7. Southern Bell Telephone System.
8. Western Union Telegraph Service.
9. Municipal water works.
10. Excellent graded schools and accredited high school.
11. Good Churches of leading denominations.
12. Carnegie Library.

AT YOUR SERVICE

1. Several excellent doctors.
2. Several good hotels.
3. Wide range of Mercantile Establishments.
4. Southeastern Express Co.
5. American Railway Express Co.
6. Murphy Chamber of Commerce.

FARMING INTERESTS

The country immediately surrounding Murphy is particularly adapted to intensive truck farming. The soil is of a rich loamy character, requires

no artificial fertilizer. The high healthy climate of Murphy makes poultry husbandry a successful and profitable enterprise. Good farm lands range in price from \$15.00 to \$100.00 per acre.

FACTORY SITE

Murphy as a factory site, offers numerous big advantages. Murphy is the already recognized distributing center of this vast mountain section. There is an abundance of power for all kinds of machinery. The town is preserving a number of good factory sites along the banks of the Hiwassee River and is, in fact, offering a few free sites for industrial plants. Detailed information on this subject may be had on application.

NATURAL RESOURCES

Within the Murphy basin, of the

Hiwassee River and its tributaries are to be found in abundance a number of Natural Resources:

1. About 200,000 acres of choice virgin hardwood timber.
2. The valleys are well filled with all colors of high grade marble in various colors: blue, pink, white and gray.
3. Murphy is the center of a large iron field of about ten veins. This iron extends about 25 miles east along the Southern Railway, and about 25 miles west along the L. & N. Railroad.
4. Southern Cherokee County embodies a large section of the same veins of copper that are now being worked at Copehill and Ducktown, Tennessee.
5. High grade tale is to be found in abundance within this basin.
6. One of the largest veins of manganese in the United States.
7. Large veins of Ruby Red Garnet, also Black Garnet and Cluster Garnet.
8. Several large veins of magnetic iron.
9. Large quantities of Titanium of Route.
10. Murphy being the junction point of three rivers, the Hiwassee, the Nolichucky, and the Valley Rivers, offers one of the greatest undeveloped sources of water power in the entire South.

ROADS

Murphy has an outlet over good highways into Georgia by two routes, into Tennessee by two routes, and into North Carolina over two routes. The main through route, of course, is the Appalachian Scenic Highway. This wonderful route, while in its infancy, is now complete, and is already recognized as the connecting link between the North and the South by automobile. It starts in the far North on the St. Lawrence River at Quebec, Canada, and leads in a most direct route to Florida by way of Atlanta or to New Orleans on the Gulf of Mexico.

INDUSTRIES

- One Furniture factory.
- One underwear factory.
- Numerous lumber mills.
- One shuttle block mill.
- Two flour mills.
- One ice factory.
- One wholesale grocery and dry goods.
- One wholesale grocery and produce.
- One wholesale hardware.
- Fifty retail stores.

Murphy transacts a good volume of business in general line enterprises:

- U. S. Post Office receipts, \$15,000 annually; retail dry goods and clothing sales, \$200,000 annually; retail grocery and produce sales, \$500,000 annually; retail drug sales, \$125,000 annually; retail furniture sales, \$100,000 annually; retail hardware sales, \$150,000 annually; jobbing business, \$2,000,000 annually; manufacturing business, \$1,750,000 annually.

Murphy ships to outside markets annually: 50 carloads of live poultry; 20,000 cases of fresh eggs; 25,000 bushels of seed rye; 425,000 cross-ties.

GOVERNMENT

The municipal government of Murphy is by mayor and board of commissioners. The present administration is filled by:

- Mayor, W. M. Fain; Commissioners: J. B. Story, E. P. Hawkins, B. W. Sipe, J. H. Phaup, W. W. Hyde, W. D. Townson.

The watchword of this wide-awake body is Progress. The influence of that motto applied by this body during the past three years has enabled Murphy to show a growth in population of more than 100 percent. Many public improvements have been completed and many more are in the process of completion.

DONT TRY TO RAISE your family without it. For stomach aches and pains; sudden cramps; severe intestinal colic and indiscretions of eating and drinking; changes in water, diet or climate, take

CHAMBERLAIN'S COLIC AND DIARRHOEA REMEDY Keep it always in your home.

For Sale By R. S. Parker, Druggist

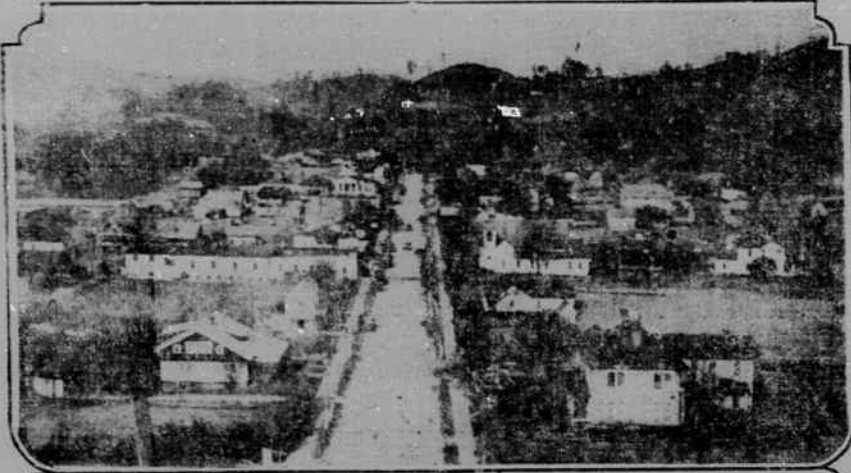


VIEW OF PROPOSED GREAT SMOKY MOUNTAIN NATIONAL PARK BOOSTER



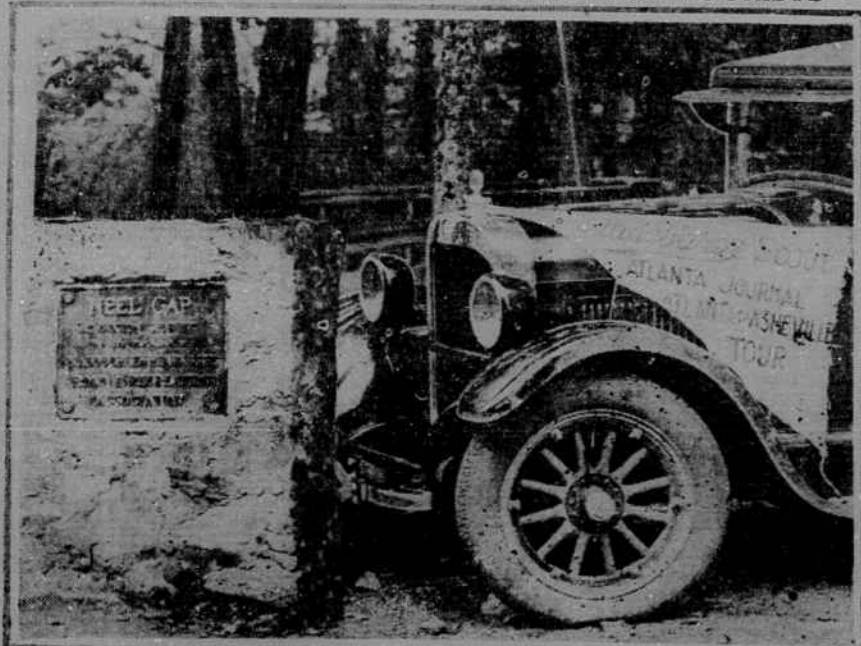
Judge T. B. Brown, of Bryson City, is one of the leading boosters of this plan. He is greatly interested in the plan to establish a national park in the Great Smoky Mountains and is working for it. He has made two excellent speeches in the county recently at Andrews and Marshall, which have done much to arouse the people of this section to the possibilities of a national park. The plan has to be studied therefrom.—Photo Courtesy Asheville Citizen.

BRYSON CITY AND THE CHEROKEE RESERVATION



Top photo is a general view of Bryson City. The Journal Motorcade will stop at Bryson for noonday luncheon on September 15th, second day of the tour. Lower picture shows a portion of the Cherokee Indian Reservation, with the school buildings in the left foreground. Both pictures show the fine examples of the rugged mountain scenery which abounds in this section.—Photos courtesy Atlanta Journal.

NEEL GAP GREAT ATTRACTION FOR TOURISTS



A wonderful view of Blood Mountain Gorge and other mountain vistas is had from Neel Gap, the highest point on the Georgia end of the new Appalachian Scenic highway. It is through Neel Gap that the highway crosses the Blue Ridge mountains, and although more than 3,100 feet above sea level the gap is far from being the highest mountain point. The Atlanta Journal's Studebaker standard six scout car is seen beside the Neel Gap mark.—Photo Courtesy Atlanta Journal.

TOUR HEADQUARTERS



The Regal Hotel, Murphy, is a modern building and has accommodations for a large number of guests. It has been designated as headquarters for the Tour in Murphy.—Photo courtesy Asheville Citizen.



Fletcher's CASTORIA

MOTHER! Fletcher's Castoria is a harmless Substitute for Castor Oil, Purgative, Teething Drops and Soothing Syrups prepared to relieve Infants in arms and Children all ages of

- Constipation
- Wind Colic
- Flatulency
- To Sweeten Stomach
- Diarrhea
- Regulate Bowels

Aids in the assimilation of Food, promoting Cheerfulness, Rest, and

Natural Sleep without Opiates

To avoid imitations, always look for the signature of *Dr. J. C. Fletcher* Proven directions on each package. Physicians everywhere recommend it.