

The Cherokee Scout
The Official Organ of Murphy and Cherokee County, North Carolina
PUBLISHED EVERY FRIDAY
C. W. BAILEY, Editor-Manager
MRS. C. W. BAILEY, Associate Ed.
B. W. SIPE, Associate Ed.
Entered in the postoffice at Murphy, North Carolina, as second class mail matter under act of Mar. 3, 1879.

Subscription Rates
One Year \$1.50
Eight Months 1.00
Six Months 75c
Payable Strictly In Advance

Legal advertisements, want ads, reading notices, obituaries, cards of thanks, etc. 5c line each insertion, payable in advance. Display and contract rates furnished on request.

All communications must be signed by the writer, otherwise they will not be accepted for publication. Name of the writer will not be published unless so specified, but we must have the name of the author as evidence of good faith.

We'd hate to be the sheriff of that World Court.

If you take up genuine religion it will take you up.

After all, who ever cashes in on a million dollar rain?

The Bargain stores run banks a close race for women's savings.

Regarding some, we say they married for love; others, for the love of Mike!

It takes courage to look into the face of a man; sacrifice to look only at the face of the modern woman.

The Charleston dance is nothing but youth shaking the dust off its feet at our demands for reform.

If the Filipinos would come over and study our brand of freedom maybe they wouldn't be so keen for independence.

Our idea of a failure in life is the fellow who starts at a ribbon counter and ends in an office full of red tape.

Adding insult to injury is squeezing a fellow's shoulder after realizing you've slapped him too hard on the back.

The fellow who boasts that he'll try anything once never tried one of those nickel cigars they sell at two for a quarter.

When the next coal strike comes we will need an arbitration commission to determine when and how an arbitration commission should arbitrate.

The Scout is late this week on account of the "force" having colds and the flu. Robert McCombs has been out several days, and ye ed one day, and Roy has almost had to be out. No one has really felt like work.

LETTERS

Dear Brother Editor:
For some weeks agents of the liquor interests have been canvassing mostly in the cities and towns of this state securing signers to petitions asking for the weakening of our liquor laws and seeking through a "Wine and Beer" amendment to get an entering wedge by which they can bring back the liquor traffic. Our religious papers, our pastors and our churches fought long and prayed earnestly to outlaw the liquor traffic in North Carolina and in this nation. We cannot afford now, to let these paid agents to the brewery interests and the corrupt politicians delude our people into cutting a hole through the prohibition dyke which, by united effort and hard work, we have built around this state and around our nation.
I write to urge pastors, temperance leaders and all friends of prohibition in the churches to at once secure the adoption of a resolution by their churches urging our congressmen and senators to stand by the laws which we have enacted, and, in every possible way seek to strengthen these laws and make them more effective. Send the resolutions to me and I will forward them in bundles to your congressmen. I submit below a simple form which may be followed with any changes that may seem proper.

I would suggest further that Chambers of Commerce, Women's Clubs, Civic Clubs, Fraternal Orders and other groups might follow out this suggestion. If our people will heed this simple hint we can give to our representatives some much needed cooperation and encouragement. This is one of the most effective ways by which the Lord's people can combat the efforts of the Devil's friends.

Very sincerely yours,
N. C. Anti-Saloon League,
C. A. Upchurch, Supt.
To _____ M. C.
This resolution is from _____ Church

At our last regular business meeting it was voted that we send you our endorsement of the prohibition laws as they are now written on the statute books. We urge you to uphold the laws which we have and, to seek in every honorable way, to strengthen them and secure better enforcement of same.
Done by order of _____ Church
Address _____
Signed _____ Pastor
Signed _____ Clerk
This _____ 1926.

Dear sir:
We have just received a telegram from the Honorable David H. Bliss, Commissioner of Internal Revenue, that a Treasury Decision provides that the salary information returns need only be made for single employees whose salary was for the calendar year of 1925 \$1500.00 or more; and need only be made for Married employees whose salary for the calendar year of 1925 \$3500.00 or more; this will relieve you of part of this usual information.

The telegram from the Commissioner reads as follows:
"Treasury decision thirty eight, eighteen provides information returns on Form 1099 will be required only where payments amounting to fifteen hundred dollars or more are made during the calendar year to single persons, or thirty five hundred dollars or more to married persons; give publicity to this provision and notify the large taxpayers in your district."

The Commissioner has already released the regular income Tax returns form 1040-A, for taxpayers of not more than five thousand dollars net income; the larger individual income tax returns and the corporation income tax returns will be sent as soon as the new bill is passed by congress and with these will go explanation of the changes made by the new law.

Most respectfully,
GILLIAM GRISSOM,
U. S. Collector.

The Traffic Evil

With the coming of spring and summer and the increase in traffic it is well to think now of the danger to pedestrians, and the many traffic ills.

As suggestions; eliminate all joy-walking, white-line all cross walks, and enforce the well defined traffic rules and regulations, and erect vivid traffic signs at most dangerous points.

(Signed) A. W. LOVINGOOD

ORCHARD HINTS FOR THE MONTH

If the winter pruning and spraying has not been finished, get busy with it now as I should be done before the Spring growth starts. Prune first and burn all the limbs so that you will destroy all insects and diseases that could be on the twigs. Then spray with either lime sulphur or Scalecide for your dormant spray. This spray is very important as you can not grow good fruit with a diseased tree.

The above applies to apples, pears and peach trees.

Your grape vines should be pruned now as it will soon be too late to prune them. If you prune a grape vine late your vines will bleed to freely and injure your vine.

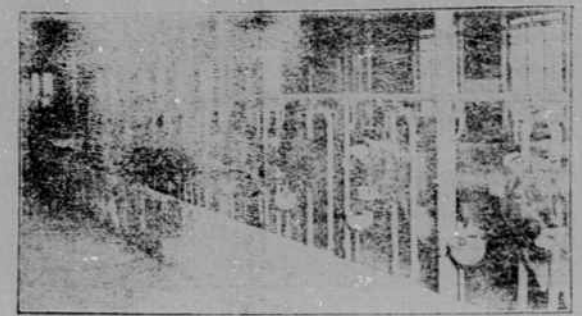
Your grape vines should be sprayed just before your blooms come out in the Spring.

Those setting out young orchards should begin to get the ground ready as your trees will soon be delivered from the nursery if they have not been and they should be set before the sap begins to rise.

The next article to appear in this paper will be on Fertilization and the summer sprays and how to control the different diseases and insects that infect the fruit.

Caution, The Lime Sulphur or Scalecide spray must be applied before the growth starts in the Spring.
R. W. GRAY
County Agent.

Cooperating Associations Invaluable to Milk Production



Elimination of non-productive cows from milk herds carries out profit.

Getting more milk from fewer cows is the aim of the cow testing association. Hundreds of cases have demonstrated in a most striking manner that the weeding out of non-productive milk cows and better care for the producing members of the milk herd pay big dividends.

This point was strongly stressed in an exhibit at the International Dairy Exposition held at Indianapolis last October. An actual instance was given which disclosed the following facts.
A milk producer had a herd of six milk cows producing 27,000 pounds of milk annually. He joined a cow testing association. The first step taken was to weed out the non-productive cows, that is, those cows yielding insufficient milk to net a profitable income over and above feed cost.

The weeding out process left only four cows in the milk herd. But these remaining cows were fed according to their individual requirements. No sanitary or beneficial feeding measure was neglected. During the following months, they were given plenty of clean bedding, stables were kept clean, the long hair on flanks and udders were kept clipped. The

cows were brushed or wiped with a kumby cloth before each milking. Stables were muzzled. The stables were well ventilated and plenty of clean pure water was given the cows.

A year from the time the member joined the association, his records showed an increase in milk to more than 23,000 pounds from the four cows as compared to 27,000 pounds from six cows prior to this period. There was more than a corresponding increase in butterfat.

The cow testing association consists of about twenty-six farmers who co-operate and employ a trained tester to test their cows for economical production of milk and butterfat. The tester spends one day a month on each farm and obtains a complete record of each cow's milk and butterfat production, feed consumed, feed cost, growth, and income, and income over feed.

The first cow testing association in the United States was that organized at Newaygo County, Michigan, in 1905. Since then, there has been a fairly constant growth until 1925 shows a tally of 732 cow testing associations with excellent prospects of the number doubling within the next three years.

The Cherokee Scout,
Murphy, N. C.

Mr. W. R. Anderson County Agent of Clay County, should not find fault with the farmers for asking questions, since he does not visit the farmers. He is paid for what he does and tells the farmers and if he does not tell them how will some of the farmers make anything of their farm?

I can speak for only one. I have never received any advice from the county agent on how to grow rye, and I will pay a \$5.00 bill to any one in the county that can show a better field of rye, at this time of year.

I have an orchard but I do not ask for advice. If the county agent wants to come to my place and orchard, and if his system suits me, I will be glad to have his help, but I am not going to move my farm to Hayesville just to have the county agent look it over.

If Mr. W. R. Anderson will get out among the farmers he can stop some of the questions.

The farmers in Clay County are of a class that are trying to do something for themselves and seek for something to do for their benefit. And since the County and State pay Mr. Anderson for his time. The farmers think he should know what is best, as the State pays for the best to be had and the County wants the best for Clay County farmers.

As the County grows, it wants its farmers to grow also. With good farming and with other resources Clay County has, it can easily lead Western North Carolina but if we have a few more to lay around in the shade and tramp on the grass, how can we expect the grass to grow?

What I have to say to the Clay County farmers, is to step on the gas and keep off the grass and watch the grass grow!

We like hot air, but give me action first.

H. R. McIntosh,
Just over in Scrougtown
Rt. 3, Hayesville, N. C.

THOUGHT A DAY

By Rev. Chas S. Plyler,
Hayesville, N. C.

SUNDAY—when we look into the earth with the microscope, we see law and order; when we sweep the heavens with the telescope, there we see law and order; but when we peep into the human brain, there we see confusion.

MONDAY—The world today is crying: "Think for yourself", and when we hear him hooted at, called a fool and often deserted by his friends.

Tuesday The monkey-business

TUESDAY—The more monkey business we have, the less time we'll have for other business. For it seems that some people are like the

ancient savages—not satisfied without scalping some one.

WEDNESDAY—It matters not so much where we syring from, or to where we are going, as the fact that we are there, and what we are doing. Let's go to prayer-meeting tonight.

Thursday—Some like summer best but I like the winter—those long winter evenings by a good fire, with a good book—at peace with mankind, with yourself, and with God.

FRIDAY—I don't believe that any good thought is ever lost. After it is once conceived, it may lie apparently dormant in development for a long time; then it is born into the world in literature, or in the form of a noble deed, to bless humanity.
SATURDAY—Some people seem to think that the Lord makes fools along with other people; but I am inclined to think that the fool himself, or some of his ancestors, has run cross-grained with nature and her laws.

SUBSCRIBE NOW!

22 Years of Leadership
and still Leading in
Price ~ Design ~ Quality

	New Price	Old Price
Tudor	\$520	\$580
Fordor	565	660
Coupe	500	520
Touring	310	290
Runabout	290	260

All Prices F. O. B. Detroit

Supremacy Maintained through Features which Established Ford Leadership

Left-Hand Drive

Originally introduced by Henry Ford on the Model T car in 1908 and since adopted for most American-made cars.

Three Point Motor Suspension

First used by Henry Ford in 1903, and a feature of the Model T power plant for eighteen years.

Dual Ignition System

Dual ignition is provided for Ford cars, (1) the Ford magneto and (2) the generator and storage battery. This has been a great factor in establishing the Ford reputation for reliability.

Planetary Transmission

Costs more to build than the conventional sliding gear type but gives better light car control.

Multiple Disc-in-oil Clutch

The multiple disc clutch is generally conceded to be the best and smoothest type for any car. The Ford clutch runs in oil.

Thermo-Syphon Cooling System

Extremely simple—always efficient. No water pump to require packing. Circulation of water is governed entirely by engine temperature.

Simple, Dependable Lubrication

Exceedingly simple, combining the splash principle with gravity flow. No pump required.

Torque Tube Drive

Henry Ford originated the Torque Tube in 1908—a driving principle now embodied in many of the highest priced cars.

"We have never lowered the quality of the car to reduce the price"

