

### Soybeans In Corn Increased The Yield

Raleigh, N. C., Oct. 26, 1927.—Soybeans planted with corn has increased the yield per acre of the corn in at least one instance in North Carolina.

The demonstration was made by W. M. Green of Troy in Montgomery County. Mr. Green began a soil building demonstration with county agent O. R. Carrithers last spring. He planned to build up his soil by including soybeans with his corn so that the crop residues might be turned under. No soybeans was planted in part of the corn for purposes of comparisons.

According to E. C. Blair, extension agronomist, at State College, who reported the demonstration, where no soybeans were grown, Mr. Green planted his corn in rows, four feet apart with the stalks standing 30 inches apart in the row. In contrast to this he planted the other corn in rows six feet apart and 20 inches apart in the row. Then on the same day, he planted O-too-tan soybeans between the rows of the latter corn. This gave the same number of corn hills per acre whether with or without soybeans.

All the corn was fertilized alike. This means that the corn and soybeans received one-third more fertilizer an acre because the rows were closer together. The corn made good growth under both conditions. The soybeans grew from four to five feet high and spread enough to completely cover the ground. After the corn was ripe, says Mr. Blair, two rows having soybeans between them were gathered and weighed against three rows without the soybeans. The yield per acre was 35 bushels of corn with the beans as compared to 25 bushels per acre without the beans.

Mr. Blair states that in addition to the 10 bushels of corn gained per

acre, there will be added benefits in years to come due to the great amount of legume vegetable matter plied under this fall for soil improvement.

### Taft Prosecutes



\* Charles Taft, son of the Chief Justice and former President Taft, is directing the prosecution of George Remus, millionaire "Bootleg King" for the murder of Mrs. Remus, at Cincinnati, O.

### We Do General Repair Work ON ALL MAKE OF CARS

ALL WORK GUARANTEED

We Also Have Some Used Cars For Sale

Hudson-Essex Sales and Service East Murphy

### LIBRARY HOURS

Afternoons

Tuesday, Wednesday, Thursday and Friday from 2:00 P. M. to 4:30 P. M.

Evenings

Tuesday, Thursday and Saturday from 7:00 P. M. to 9:00 P. M.

JOSEPHINE HEIGHWAY.



### ABERNATHY'S BLOOD PURIFIER

The Wonder Tonic

will be found at either of your Drug Stores.

If you are troubled with Rheumatism, Kidney trouble, bad blood, stomach trouble, lost appetite, and nervousness you ought not wait longer than you read this to get some of this great herb medicine.

Manufactured and distributed by

J. H. ABERNATHY ANDREWS, N. C.

### NOTICE TO CONTRACTORS

Sealed bids will be received up to noon Monday, October 31, 1927, for the wrecking of the present building and erection of another according to plans and specifications which may be seen at my office. Bids to be separate for wrecking old building and construction of new. All material in old building to be purchased by the contractor whose bid is accepted. A complete turn-key job wanted. Bond will be required of contractor in the sum of 75 percent of bid.

The right is reserved to reject any and all bids.

This October 20, 1927.

N. B. ADAMS, Murphy, N. C.

### Fine Watch Repairing

Prompt Attention to Mail Order Repairs



J. L. ROWLAND Jeweler Andrews, N. C.

SUBSCRIBE NOW!



SAY "BAYER ASPIRIN" and INSIST!

Unless you see the "Bayer Cross" on tablets you are not getting the genuine Bayer Aspirin proved safe by millions and prescribed by physicians for 25 years.

DOES NOT AFFECT THE HEART

Safe Accept only "Bayer" package which contains proven directions. Handy "Bayer" boxes of 12 tablets. Also bottles of 24 and 100—Druggists.

Aspirin is the trade mark of Bayer Manufacture of Monacostadt of Sullycoch

### PLENTY OF MONEY TO LEND

ON PROPERTY LOCATED IN

Murphy and Andrews

QUICK SERVICE AND LIBERAL TERMS

NO AGE LIMIT.

AMOUNTS FROM \$300. UP

For full particulars call on or write

HARRY P. COOPER

Murphy, N. C.



### SAVE YOUR FACE

Men everywhere are awakening to the truth that dull, rough-edged blades pull and irritate the skin. Save your face!

The most important factor in correct shaving is a smooth-edged, keen razor blade. Stropped, smooth-edged Valet AutoStrop Razor blades give perfect, face-saving shaves.

The Valet AutoStrop Razor keeps your face soft and youthful looking.

### Valet Auto-Strop Razor

Sharpens itself

GUARANTEE

We wish that every user of a Valet AutoStrop Razor be constantly enthusiastic. Should anything happen to yours affecting its perfect service, send it to us for repair or replacement. If your atrop is not in good condition—return it for a new one—no charge for either service.

AutoStrop Safety Razor Co., 656 First Ave., New York, N. Y.

For Economical Transportation



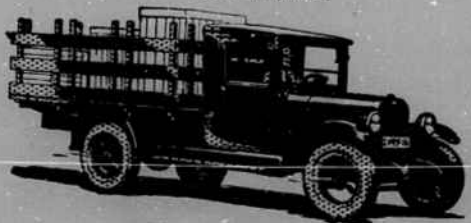
# Two Trucks

that lead the world in popularity



1/2 Ton Chassis Only \$395

f. o. b. Flint, Mich.



1-Ton Chassis Only \$495

1-Ton Truck Chassis with Cab \$610

All prices f. o. b. Flint, Mich.

The number of 1/2-Ton trucks in use today is far greater than that of any other capacities—for these are the units used by thousands upon thousands of retail merchants to meet the requirements of modern delivery service.

And because Chevrolet offers the greatest value available in each of these two sizes—and because it offers the world's lowest ton-mile cost—both the Chevrolet Ton and 1/2-Ton trucks are leading the world in popularity.

Come in—and see for yourself what Chevrolet offers you in comparison with other haulage units.

Then you'll know why Chevrolet is the world's largest builder of gear-shift trucks—with undisputed leadership in both the Ton and 1/2-Ton fields!

DICKEY MOTOR CO.

Murphy, N. C.

THE WORLD'S LARGEST BUILDER OF GEAR-SHIFT TRUCKS