

REV. M. T. HINSHAW

Who is conducting Revival Services at the Methodist Church all this week.

LOOK-UP

Two men looked out from prison bars. The one saw mud, the other stars.

—Kipling.

And so Kipling expresses two views that men take of life. Our world is not by any means perfect, and men are not angelic spirits, but after all it is a pretty good old world in which to live if we have the proper attitude towards life and mankind. Of course we can look almost anywhere and see mud; we see man at his worst in his ingratitude, his deceitfulness, his lack of justice and his human selfishness. But that is the dark side. There is a bright side as well. There is much that is beautiful in life, if we care to look for it. Millions of men know what honesty means. Sincerity is an integral part of the lives of the many. Justice and mercy has a place in the minds and the hearts of more than we think. There are women who are proud to bear the world's greatest title—Mother. The word is still worth holding onto. Let us not look so often at the mud that we shall miss the bright and pleasant side of life. Look up!

The total area of the United States, territories and dependencies is 3,738,395 square miles. And we might add that there is ample room in our churches for all who will come.

There are over 8,000,000 volumes in the Library of Congress of the United States.—And yet it is said that the Washington newsstands continue to do a thriving business in questionable and cheap magazines and sheets.

Brains and Character rule the world. A famous Frenchman of the past Century said: "Men succeed less by their talents than their character". Not every man can have talents and brains but every man can have character.

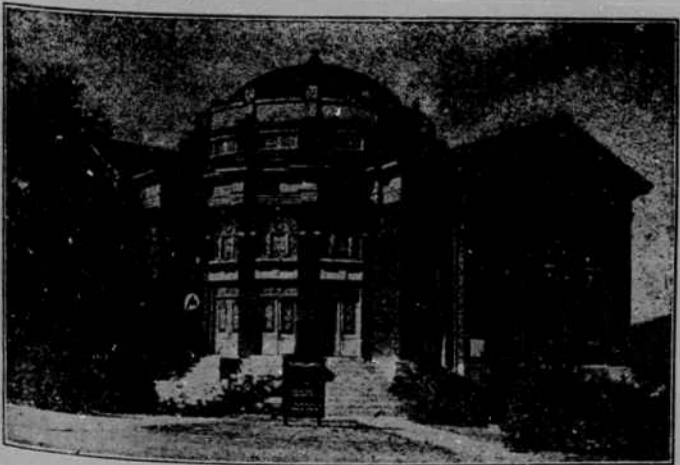
THIS DIZZY WORLD

It is estimated that each hour 6,200 babies are born. In the same length of time 700 new automobiles are built. Each hour 5,000,000 telephone conversations take place, and 65,000 telegrams are sent. The postoffices of the world are deluged with more than 1,000,000,000 letters each hour of the day and night, bearing postage of \$25,000,—number of 1,000,000 copies. The earth at its equator rotates at the rate of 1,000 miles per hour, and rushes in space around the Sun at the dizzy speed of 65,000 miles and hour or more than 1,000 miles per minute. We are travelling fast, but the great question is: Where are we going? Newspapers and periodicals are printed every hour in the world.

Men are so busy laying up treasures on earth that they do not take the time nor the effort to lay up treasures in Heaven.

GO TO CHURCH—READ YOUR BIBLE—PRAY. AND LEARN HOW TO LIVE.

MURPHY METHODIST CHURCH



MURPHY WINS ON SUNDAY BY SCORE OF 10-5

Only One of Three Games Scheduled With Caterpillars Played

Although Old Man Weather played havoc with Murphy's big "Decoration Day" week-end of baseball, the Boomers did manage to squeeze in one game of a series of three here on Sunday afternoon and walloped the Knoxville Caterpillars 10 to 5.

Two other games scheduled with the Tennessee nine were rained out on Monday.

By winning from the Knoxville outfit, Murphy ran their streak of wins this season to four against no losses.

For the second time this year, Alston Parker, of Marble, bore down on his foes and let the Knoxville lads cut with ten hits—four of which came in the eighth inning while the Volunteers were scoring four of their five runs. The other six hits were scattered over five innings.

Murphy jumped on the Knoxville pitcher for 15 hits. They scored one run in the first inning, four in the second, four more in the fourth, and added another in the seventh.

Houser, Knoxville moundsman, and Harley Barton, of Murphy, led the hitting. The Tennessee pitcher got four hits out of four trips to the plate, while Barton collected a triple, a double and two singles in five chances.

Murphy opened the scoring in the first inning when Pitzer tripled and Harley Barton singled to bring him in. In the second inning Ray Barton singled, Townson walked and Parker singled. Johns was safe on first by a fielders choice and Pitzer and Harley Barton both doubled.

In the fourth inning a blast of five hits brought in four more runs. Johns singled, Pitzer doubled, Harley Barton tripled, Barnett doubled and Kirkland singled. The final score in the seventh was the result of Slim Hensley hitting a single and advancing on errors.

Knoxville's first score in the seventh was the result of a double, a base on balls and a single. Four hits and an error in the eighth gave them four more runs.

Murphy was charged with making one error, while Knoxville was responsible for two.

The box score:

Murphy	ab	r	h	e
Johns 3b	5	2	1	0
Pitzer ss	5	3	3	0
H. Barton 2b	5	1	4	1
Barnett lf	5	1	2	0
Kirkland cf	5	0	2	0
Hensley 1b	4	1	1	0
R. Barton c	4	1	1	0
Townson rf	2	1	0	0
Parker p	4	0	1	0
Sowder cf	1	0	0	0
Totals	41	10	15	1

Knoxville	ab	r	h	e
B. King 3b	5	1	1	1
M. King 2b	5	1	0	0
B. Doyle cf	4	1	1	0
B. O. Doyle 1b	3	0	0	0
Wylie lf	4	1	3	0
Bodenheimer ss	3	0	0	1
Hilton c	4	0	1	0
Stewart rf	2	0	0	0
Houser p	4	1	4	0
Hall rf	2	0	0	0
Totals	36	5	10	2

China Opens Drive With German Troops

SHANGHAI, June 2—Crack German-trained divisions of Generalissimo Chiang Kai-shek's Chinese army were hurled into the Lung-hai battle area this week as a rejuvenated Chinese attack, converging from three sides, sought to annihilate the army of Gen. Kenji Doihara trapped northwest of Lanfeng.

The generalissimo arrived at Chengchow, 100 miles west of the present battle front, early this week and assumed personal command of the operations, in which the jubilant Chinese predicted they would deal a smashing blow to the Japanese drive on Hankow.

Within the walled city of Lanfeng, which was occupied by the Japanese early last week, admittedly recaptured by the Chinese, General Doihara's harried 14th division was virtually encircled by Chinese armies from the east, west and south, and blocked off on the north by the Yellow river.

17,818 ACRES TO BE BOUGHT FOR FOREST AREAS

The national forest reservation commission has approved the purchase of 17,816 acres of land to be added to Pisgah, Nantahala, Cherokee, and Croatan national forests in North Carolina at a cost totalling over \$66,000. Secretary of War Woodring, president of the commission has announced.

This is part of a 215,933-acre purchase, at a cost of \$647,790, over the entire United States. In Pisgah national forest 9,605 acres will be purchased at a cost of \$33,211; in Nantahala national forest, 3,199 acres at \$13,778; in Croatan national forest, 1,626 acres at \$3,766; and in Cherokee national forest, in both North Carolina and Tennessee, 3,386 acres, \$15,782.

In addition to their future value in timber production, these purchases will consolidate areas for administration, fire control and recreational use, reduce silting in reservoirs, and reduce poaching on game refuges within national forests, Secretary Woodring said.

Rotenone Controls Unwelcome Beetles

The Mexican bean beetle is again making its unwelcome annual visit to thousands of North Carolina bean fields.

To control this insect, J. O. Rowell, extension entomologist at State College, is recommending that growers use rotenone either as a spray or as a dust.

Gardeners who are equipped to dust will find the three-fourth of one per cent rotenone dust satisfactory. It is highly important that the dust be applied to the underside of the leaves. Care should be taken to obtain a thorough and uniform coverage of all the foliage.

For snap and bush beans, the rate of application should vary between 15 and 20 pounds to the acre. The application rate on pole beans will depend on the size of the plants.

Dusting should be started when beetles are found on the beans, or when the egg masses become numerous on the underside of the leaves. From one to four applications are necessary, depending on the prevalence of the insects.

Rotenone dust mixture should not be used in a spray unless the label on the package indicates that a diluent has been used which will mix readily with water.

When a spray is used, Rowell recommends finely ground cherries or cube root containing 4 per cent rotenone at a dosage of 1 1/2 pounds in 50 gallons of water. If small amounts are desired, he advises 1 1/2 ounces in 3 gallons of water.

The usual rate of application is 90 to 100 gallons to the acre. As with the dust, it is necessary that the applications be made uniformly and thoroughly and that the spray reach the underside of the leaves. Repeat every 4 or 5 days until control is obtained.

May Obtain Weekly Market Report Free

Raleigh, N. C., June 2—A weekly market report on poultry and eggs, hogs and sheep will be mailed free to any farmer in North Carolina upon request by the markets division of

The Japanese military spokesman said Japanese reinforcements were being rushed westward from Kweichow, about 40 miles east of Lanfeng on the Lung-hai railroad, to relieve Doihara's troops.

When Women Need Cardui

If you seem to have lost some of your strength you had for your favorite activities, or for your housework . . . and care less about your meals . . . and suffer severe discomfort at certain times, . . . try Cardui!

Thousands and thousands of women say it has helped them. By increasing the appetite, improving digestion, Cardui helps you to get more nourishment. As strength returns, unnecessary functional aches, pains and nervousness just seem to go away.

DR. E. L. HOLT
Dentist - X-ray Specialist
Hill-Parker Bldg.
Murphy, N. C.

the State Department of Agriculture.

Farmers and livestock men desiring the market information should address their request to A. B. Harless, market news specialist, State Department of Agriculture, Raleigh, N. C.

The marketing service is part of the enlarged program of the markets division and is designed to inform both buyers and sellers of price conditions that must be known if intelligent marketing practices are followed, Harless explained.

Three undertakers delivered coffins to Miss Florence Lee of Chicago on orders telephoned by some practical joker.



BUILT TO PROTECT YOU AGAINST DANGEROUS TAILSPINS LIKE THIS!



THIS NEW TIRE WILL STOP YOU QUICKER, SAFER ON WET ROADS THAN YOU'VE EVER STOPPED BEFORE. AND WE CAN PROVE IT. COME IN FOR THRILLING DEMONSTRATION RIDE!

Life's too sweet to take chances with dangerous, hair-raising skids. Get the amazing skid protection of the New Goodrich Safety Silvertown with the Life-Saver Tread. Come in today for a thrilling demonstration ride. Let us prove to you that this sensational new tire will stop you quicker, safer on wet, slippery roads than you've ever stopped before.

EXTRA!
Remember, the new Silvertown also gives you all these other "extras"—PATENTED TRUCK-TYPE HI-FLEX CORD that adds strength and long life to the tire...A BROADER, FLATTER TREAD that gives months of extra mileage and greater riding comfort...NEW STREAMLINED SIDEWALLS that give a new dash of beauty to your car.

The new Goodrich SAFETY Silvertown
LIFE-SAVER TREAD...GOLDEN PLY BLOW-OUT PROTECTION

GULF SERVICE STATION

FRANK ELLIS, MGR.
MURPHY, N. C. PHONE 33