

LEGAL NOTICES

ADMINISTRATOR NOTICE

Having qualified as administrator for the estate of Miss Margaret Kincaid, deceased, late of Cherokee County, North Carolina, this is to notify all persons having claims against the estate of said deceased to exhibit them to the undersigned at Murphy, North Carolina, on or before the 10th day of March, 1940, or this notice will be pleaded in bar of their recovery. All persons indebted to said estate will please make immediate payment.

This the 8th day of March, 1939. D. M. REESE, Administrator of Miss Margaret Kincaid dec'd

NO. 1876-2624 NORTH CAROLINA, CHEROKEE COUNTY, IN THE SUPERIOR COURT. NOTICE OF SALE OF LANDS. The Town of Murphy, Plaintiff, Against

Mrs. Bessie Deweese, and all other persons claiming or owning an interest in the lands here in referred to. Defendants.

By virtue of an order and decree entered in the above entitled cause by the Clerk of the Superior Court for Cherokee County, on Monday the 22nd day of June, 1936, and February 18th, 1939, the undersigned, E. B. Norvell, Commissioner will offer for sale, and sell the land hereinafter described at public outcry, at the Court house door in Murphy at 11 o'clock A. M. Central time, on April 3, 1939, the following described piece and parcel of land lying in the town of Murphy, Murphy Township, Cherokee County:

All that certain piece and parcel of land set forth and described in a deed from J. H. Harwood and wife to Mrs. Bessie Deweese, registered in the office of the Register of Deeds for Cherokee County, in Deed Book No. 71, page 530. It being where Mrs. Bessie Deweese now resides.

Terms of sale cash. Sale subject to confirmation by the court. The right is reserved to reject any, or all bids. This the 23rd day of February, 1939.

E. B. NORVELL, Commissioner.

NORTH CAROLINA, CHEROKEE COUNTY, IN THE SUPERIOR COURT. TOWN OF ANDREWS, VS-

C. A. Gregory, Guardian, Mrs. Geneva Gregory et als. NOTICE: SALE OF VALUABLE REAL ESTATE

Under and by virtue of an order of the Superior Court of Cherokee County, N. C. made in the above entitled proceedings appointing, the undersigned Commissioner of the Court to sell the lands hereinafter described, I, D. H. Tillitt, Commissioner as aforesaid, will on the 3rd day of April, 1939, at ten o'clock, A. M. (C. S. T.) at the courthouse door of Cherokee County, N. C. offer for sale to the highest bidder for cash the following described lands:

Being lots Nos. 7 & 8 in block 9 of the Wells Addition to the Town of Andrews.

And being same lots conveyed to G. H. Gregory by C. M. Slagle et ux dated March 25, 1918 and recorder in book No. 69 page 480 records of Cherokee County, N. C.

Dated and posted this the 3rd day of March, 1939.

D. H. TILLITT, Commissioner of the Court.

NOTICE: SALE OF VALUABLE REAL ESTATE

By order of the Board of County Commissioners of Cherokee County, the Mayor and Board of Aldermen of the Town of Murphy, and the Mayor and Board of Aldermen of the Town of Andrews, under the provisions of the Statute the following property will be offered for sale at the courthouse door of Cherokee County, N. C. on April, 3rd, 1939, at ten o'clock, A. M. (C. S. T.) time. Terms of sale one third cash, one third in one year and one third in two years-unpaid balance to be secured by a first deed of trust bearing six per cent. interest. The right is reserved to accept or reject any and all bids which may be submitted. Property described as follows:

The following lands belonging to Cherokee County:

Known as the Rose lands-conveyed to Cherokee County by E. B. Norvell, Comm. See deed book No. 119 page 322 for definite description.

Known as Sam Young lands-conveyed to Cherokee County by E. B. Norvell, Commissioner. See deed book No. 125 page 532 for definite description.

Known as W. M. Graham lands-conveyed to Cherokee County by E. B. Norvell, Comm. See deed book No. 125 page 534, for definite description.

Known as Walter Graham lands-conveyed to Cherokee County by E. B. Norvell, Comm. See deed book No. 125 page 536 for definite description.

Known as Spencer Crain lands-conveyed to Cherokee County by E. B. Norvell, Comm. See deed book No.

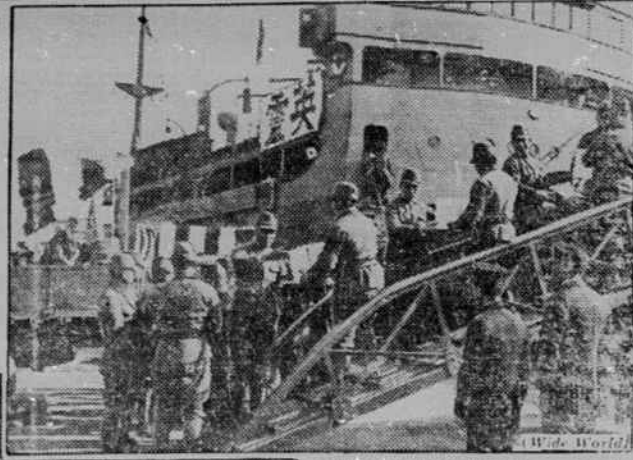
People and Spots in the Late News



(Miami News Service)

BLOOMS IN TROPICS

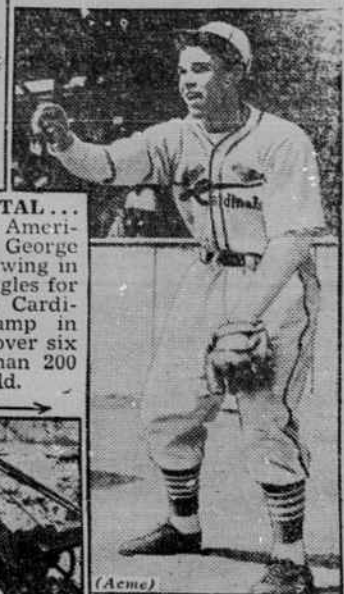
Brunette Rose Marie Magrill has been named Miss Florida of 1939 over contest field of more than 200 entrants representing almost every city in peninsular state. The Miami beauty, a dancer, is 17, tips the scales at 120 pounds and stands here 5 feet 6 1/2 inches.



(Wide World)

THEIR WAR OVER

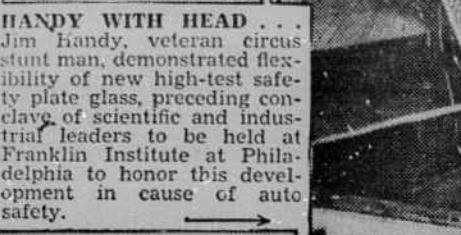
Little white boxes of ashes, all that remains of some of the thousands of Japanese soldiers who lost lives fighting in China are loaded on ship for trip back to native soil. Nipponese losses, killed and wounded, are estimated at between 450,000 and 600,000 since start of undeclared war.



(Acme)

CHIP OFF OLD IMMORTAL

Dick Sisler, son of famed American League first baseman, George Sisler, appears to be following in dad's footsteps as he struggles for recognition at St. Louis Cardinals spring training camp in Florida. Young Sisler is over six feet tall, weighs more than 200 pounds and is 19 years old.



HANDY WITH HEAD

Jim Handy, veteran circus stunt man, demonstrated flexibility of new high-test safety plate glass, preceding coming of scientific and industrial leaders to be held at Franklin Institute at Philadelphia to honor this development in cause of auto safety.



(Wide World)

KNIGHT "HOOD" IN FLOWER

Chain armor suits, worn by knights of old, provided inspiration for creation of this hand-knitted evening dress in steel thread with attached hood which Parisian designers are calling "the very latest."



POWER FOR 500,000 FARMS

REA's disclosure of plans to provide, by June 30, for electrifying half million more farms was hailed as boon to industries anticipating vast material orders. Typical are Arkansas bauxite mines (such as that shown here), source of ore for aluminum REA cable, 115,000 miles of which have been installed on REA lines.

125 page 538 for definite description.

Known as the Laura Crain lands-conveyed to Cherokee County by E. B. Norvell, Comm. See deed book No. 125 page 542 for definite description.

Known as W. D. Jump lands-conveyed to Cherokee County by E. B. Norvell, Comm. See deed book No. 125 page 544 for definite description.

Known as Emery McKinney lands-conveyed to Cherokee County by D. H. Tillitt, Comm. See deed book No. 125 page 85 for definite description.

Known as Hamby lands-conveyed to Cherokee County by E. B. Norvell, Comm. See deed book No. 113 page 506 for definite description.

Known as Waldo lands-conveyed to Cherokee County by E. B. Norvell, Comm. See deed book No. 106 page 183 for definite description.

Known as C. D. Entekin lands-conveyed to Cherokee County by E. B. Norvell, Comm. See deed book No. 106 page 188 for definite description.

Known as O. O. Synder lands-conveyed to Cherokee County by E. B. Norvell, Comm. See deed book No. 104 page 220 for definite description.

Known as A. L. Postell lands-conveyed to Cherokee County by E. B. Norvell, Comm. See deed book No. 106 page 225 for definite description.

Known as W. T. Moore lands-conveyed to Cherokee County by D. H. Tillitt, Comm. See deed book No. 118 page 20 for definite description.

Known as B. A. Hamby lands-conveyed to Cherokee County by E. B. Norvell, Comm. See deed book No. 113 page 39 for definite description.

Known as Jesse Young lands-conveyed to Cherokee County by E. B. Norvell, Comm. See deed book No. 113 page 505 for definite description.

Known as Lucinda Allman lands-conveyed to Cherokee County by E. B. Norvell, Comm. See deed book No. 113 page 507 for definite description.

Known as W. H. King lands-conveyed to Cherokee County by E. B. Norvell, Comm. See deed book No. 106 page 186 for definite description.

Known as Mike Myatt lands-

conveyed to Cherokee County by D. H. Tillitt, Comm. See deed book No. 125 page 243 for definite description.

Known as the Comstack lands-conveyed to Cherokee County by E. B. Norvell, Comm. See deed book No. 113 page 509 for definite description.

Known as J. W. Davidson lands-conveyed to Cherokee County by E. B. Norvell, Comm. See deed book 116 page 106 for definite description.

Known as Ed Creasman lands-conveyed to Cherokee County by D. H. Tillitt, Comm. See deed book No. 125 page 361 for definite description.

Known as Jim Robertson lands-conveyed to Cherokee County by E. B. Norvell, Comm. See deed book No. 106 page 182 for definite description.

Known as Pascal Palmer lands-conveyed to Cherokee County and Town of Andrews by D. H. Tillitt, Comm. See deed book No. 118 page 101 for definite description.

Known as W. T. Palmer lands-conveyed to Town of Andrews by D. H. Tillitt, Commissioner. See deed for definite description.

Known as W. B. Conley lands-see deed from D. H. Tillitt, Comm. to Town of Andrews for definite description.

Known as W. O. Patton lands-conveyed to Cherokee County and Town of Murphy by E. B. Norvell, Comm. See deed book No. 116 page 367 for definite description.

Known as C. C. Ghormley lands-conveyed to Cherokee County and Town of Murphy by E. B. Norvell, Comm. See deed book No. 116 page 364 for definite description.

Known as Frank Coleman lands-conveyed to Cherokee County and Town of Murphy by E. B. Norvell, Comm. See deed book No. 116 page 363 for definite description.

Known as S. S. C. Mount lands-conveyed to Cherokee County and Town of Murphy by E. B. Norvell, Comm. See deed book No. 125 page 540 for definite description.

Known as Martha Palmer lands-conveyed to Cherokee County and Town of Murphy by E. B. Norvell, Comm. See deed book No. 116 page 373 for definite description.

Dated and posted this the 3rd day of March, 1939.

T. P. CALHOUN, Chairman Board of Commissioners of Cherokee County, N. C. J. B. GRAY, Mayor of Town of Murphy, N. C. P. M. REAGAN, Mayor of Town of Andrews, N. C. (32-4t-c.co.-&-tofm-tofa)

NewsOddsities by Squier

Advertisement for wool featuring a cartoon by Squier. The cartoon shows a man in a suit and hat standing on a globe, with sheep and a dog nearby. Text includes: 'WOOL DOES ITS JOB SUMMER AND WINTER-KEEPS OUT HEAT AS WELL AS COLD - ARABS ON THE DESERT AND PROSPECTORS IN THE YUKON BOTH WEAR IT - BUT FOR OPPOSITE REASONS', 'LET'S GET GOING, THEOTOKOPOLOS!', 'SO SPRINGY IS WOOL FIBRE IT WILL STRETCH 70% OF ITS LENGTH AND STILL SPRING BACK. IN OLD GREECE EVERY SHEEP WAS KNOWN BY ITS OWN NAME!', 'IN THE 1700's SPANIARDS RISKED DEATH TO SMUGGLE THE HIGHLY PRIZED MERINOS. WOOL CAN ABSORB 30% OF ITS WEIGHT IN MOISTURE - AND NOT FEEL WET!', 'THE WOOL THAT GOES INTO THE SUITS AMERICAN MEN BUY ANNUALLY WOULD ENIRCLE THE GLOBE NEARLY TWICE - A YARD & A HALF WIDE & 44,000 MILES LONG!'