

Town and Farm

(Continued From page 1)

in 1942, compared with \$19,300,000 they borrowed during the year.

LUMBER FOR SHIPPING

More than 11 billion board feet of lumber will be needed for shipping containers in 1943, says the U. S. Department of Agriculture's forest service.

V-MAIL FOR SAILORS

Your V-Mail letter to a sailor will have better chance of getting to him.

Navy has expanded its V-Mail services. Four new V-Mail stations have been sent abroad.

RECRUIT FARM HELP

Labor to be with production and processing in carrying areas will be recruited in a campaign beginning immediately.

The U. S. Department of Agriculture, County agricultural agents, the U. S. Employment Service, the Office of Civilian Defense and local operators of canning plants will cooperate.

COMMITTEE ON SUBVERSIVE ACTIVITIES

President Roosevelt, by executive order, has created a five-man

inter departmental committee, functioning within the Justice Department, to pass on all complaints of subversive activity by federal employees.

TRUCK CROPS DAMAGED

Commercial truck crops in most producing areas of California and Texas were subjected to low temperatures and frosts during the last half of January.

Continued under favorable conditions. Crop development was also retarded by low temperatures in other southern states.

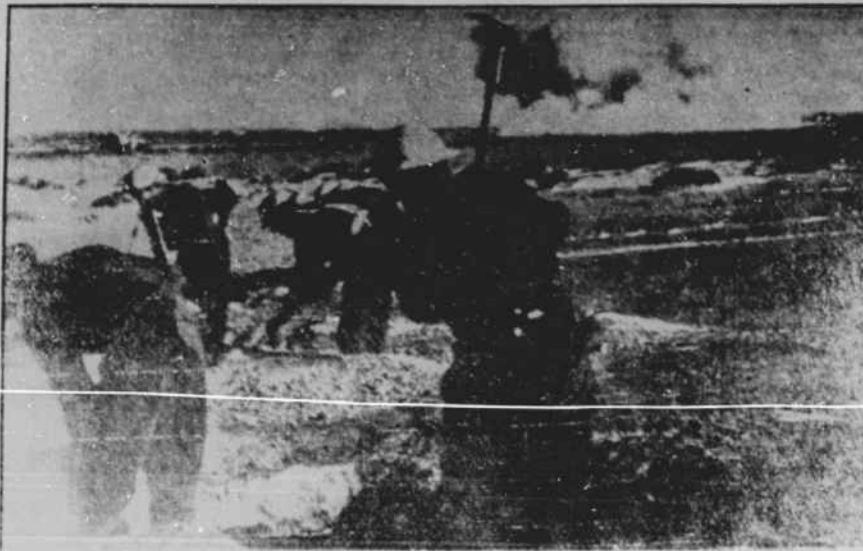
LOANS FOR SMALL BUSINESS

Small business men are urged to make loan applications direct to Regional War Production Board offices.

CHEDDAR CHEESE FOR WAR

Fully percent of all cheddar cheese, commonly known as American cheese, will be reserved for direct war uses by food distribution order No. 15, effective Feb.

BRITISH ARMY CAPTURES TRIPOLI



AFRICA—SOUNDPHOTO—This radiophoto from Cairo shows part of General Montgomery's army under fire from an Axis rear guard who fought a series of delaying actions as the British advanced on Tripoli.

Producers of more than 8,000 pounds in any month since Jan. 1, 1942 are required to get aside 50 percent of production for sale to military and governmental agencies as designated.

WHO VOTED FOR ALARM CLOCKS?

Alarm clocks styled for "war time" will be on the market by April 1. They will be apt to sound, to save critical materials, and enough will be made to take care of civilian needs.

MCNUTT OF MANPOWER RULES

Three requirements have been enunciated by War Manpower Chairman McNutt. They are: (1) Persons now engaged in essential work must stay where they are or transfer to still more essential jobs where their talents are needed.

WHEAT AND CORN LOANS

The Commodity Credit Corp. through Jan. 30 completed 513,348 loans on 403,574,539 bushels of 1942 wheat amounting to \$456,305,871.74.

In the same period 31,826 loans on 38,003,737 bushels of 1942 corn has been made, amounting to \$29,341,837.98.

NO BANK RATIONING FOR SMALL RETAILERS

Small retailers — with less than \$5000 of food sales in December 1942 — have been urged not to open a ration banking account.

MORE HARNESS LEATHER

Harness leather demand for which has increased greatly because of enlarged food production goals, will be taken from the armed forces to supply farmers.

ASK INCREASE FOR NAVY

President Roosevelt has asked Congress for an additional \$4,000,000,000 in cash and \$210,000,000 in contract authorizations for the Navy, also an increase of \$562,000,000 in the amount of 1942 appropriations up to and including June 30, 1943.

SAVE 400,000 TIRES

About 400,000 passenger car tires were saved by tire inspections during the first two months. These tires needed immediate repair and would have been beyond repair for future use if they had not been taken out of service.

NEWSPRINT CUT COMING

Readers may find it hard to get a copy of their favorite newspaper after April 1, when the second 10 percent cut in newsprint paper is likely to become effective.

HAVE YOU ANY MANILA ROPE?

Manila rope, 3/16 of an inch or larger, is indispensable for certain military purposes. The government will pay 10 percent above owner's net cost for all it can get in bunches of 200 feet or more.

TOTAL INCOME 114 BILLIONS

Income payments to individuals in the U. S. A. in 1942 totaled almost 114 billion dollars. Highest monthly total on record was December's \$11,404 millions.

REPAIRS FOR ARMY TRUCKS

Local garages and dealers may sell repair parts, gasoline, or tires U. S. Army trucks without a certificate of war necessity.

HELP FOR SUGAR BEET RAISERS

Sugar beet growers will be assured of an increase of \$150 a ton over the 1942 price by a new program of the U. S. Department of Agriculture. This is being done to encourage the production of more sugar beets without raising the price of sugar to consumers.

MAY BUY GOODS IN QUANTITIES

Ranchers and others who cannot get to market as often as once a month may apply for special permission to buy larger quantities of rationed canned and processed foods. Application should be made on OPA Form R-315 to the local War Price and Rationing Board anytime after War Ration Book No. 2 is received.

PRICES FOR ONIONS AND POTATOES

Prices have been established by OPA for dry onions as follows: Maximum price for all varieties of early dry onions except white, \$2.60 per 50 pounds — for those harvested Feb. 8, 1943 through March 1943 — \$1.65 per 50 pounds for those harvested June 1 to June 30, 1943.

For white early dry onions, country shippers may add 15 cents per 50 pounds to maximum stated above. For early dry onions of the white boiler or white pickler variety, county shippers may add \$1 per 50 pounds. If onions are sold in bulk or the purchaser's container, country shippers must deduct 15 cents per 50 pounds.

For early white potatoes in the

PEANUT OIL

Food distribution order No. 14, effective Feb. 5, reserves 20 percent of the peanut oil production for war uses. The Commodity Credit Corp. will purchase the oil for allotment to war requirements by the Food Distribution Administration.

supply feed and pasture for hogs or cows but has plenty of help so that he can increase his flock of hens — and hens can produce eggs at a profit from surplus wheat and "Brought" on feeds.

Certain figures have been set as the minimum production that Cherokee county should supply this year as a fair part in the total amounts of food needed. In a short time it should be possible to announce how much of each food product the farmers of the county are planning to produce and, if we know these same farmers, to tell just how much above the minimum amounts they are planning to go.

ADMINISTRATRIX NOTICE

The undersigned, having qualified as administratrix of the estate of Stanley Clayton, deceased,

late of Cherokee County, North Carolina, this is to notify all persons having claims against the estate of said deceased to exhibit them to the undersigned at Marble, N. C. on or before the 17th day of February, 1944, or this notice will be pleaded in bar of their recovery. All persons indebted to estate will please make immediate payment.

This the 17th day of February, 1943.

Mrs. Stanley Clayton, Adm. of Stanley Clayton, deceased.

About three-fourth of all sports equipment now being manufactured goes to members of the armed services and to those receiving pre-induction military training.

Advertisement for Camel cigarettes. Includes text: 'IN THE ARMY BOMBER SQUADRONS they say: "/>

Advertisement for Dickey Theatre. Features: 'Down Mexico Way', 'Doctors Don't Tell', 'The Male Animal', 'Apache Kid', 'Lady For A Night'. Shows on Saturday, Sunday, Tuesday-Wednesday, Thursday-Friday.

Advertisement for Murphy Laundry. 'CONSERVATION HINTS: DON'T expose yourself to bad weather ills that will keep you from important war work! Don't take chances with your health! Our thrifty laundry service is first aid to war-working housewives and the nominal cost involved pays you many times over in energy and time.'

Advertisement for Imperial Cleaners. 'We Keep Precious Woolens Dust-Free And Color Bright! With Frequent Dry Cleaning. Phone 13. We Call For and Deliver. IMPERIAL CLEANERS. We Take Orders For The SYLVA LAUNDRY.'

Advertisement for County Farmers Will Increase Essential Food. 'Food is a munition of war and Cherokee county farmers are providing an essential part of our National Production Program. Increased amounts of certain food are demanded as our part of the war this year.'

Advertisement for Polly Rich Flour. 'USING THE BEST FLOUR IS THE CHEAPEST. POLLY RICH takes less shortening, and it's the best you can buy! For Health Sake Eat Polly Rich Wheat Germs. Get It At Your Grocer's THE H. T. HACKNEY CO., INC. Distributor Murphy, N. C.'

Advertisement for Palmer's Sinclair Station. 'TRUCKS SINCLARIZED LAST LONGER. O.P.A. Official Tire Inspection Station. Make This Your Official Station. Palmer's Sinclair Station. Phone 202. Murhpy, N. C.'