

Meaning Of Signs Important To Know In Getting Driver's License

"Road signs," says Coleman W. Roberts, President of the Carolina Motor Club, "are far more important than many people realize. The shape and lettering of road signs has an individual meaning and often, especially at dusk and dawn, the shape of a sign can be recognized before the driver is able to read the message."

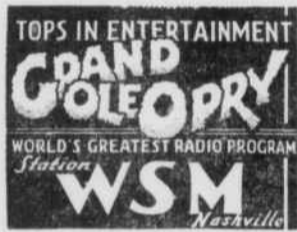
One of the tests which will probably be given to North Carolina drivers who are being reexamined during the next four years will be a road sign test. To help motorists refresh their knowledge of traffic signs, the Carolina Motor Club, using the Driver Manual of the Highway Safety Division of the Department of Motor Vehicles as a guide, presents the following pertinent road-sign information.

Road signs are divided into three general kinds and four individual sizes. The three types of signs are: Regulatory, Warning and Guide. Regulatory signs, which are fully enforced by law, regulate traffic at certain points on the highway and serve, at all times, as useful information concerning traffic conditions in any locality.

There are two divisions of regulatory signs: The eight-sided yellow sign means STOP. This octagonal marker is placed at dangerous intersections, at blind corners or anywhere on a highway where fast traffic prevails. The octagonal sign does not mean slow down but —STOP. After obeying this marker, the driver should look both

DICKEY THEATRE

MURPHY, N. C.
On Our Stage in Person
Tuesday, Aug. 19
TWO SHOWS, 8:30 and 10 P. M.



Presents



ROBERT LUNN
And His Talking Blues Boys
ON THE SCREEN

The Gay Senorita

With JINX FALKENBERG - JIM BANNON and STEVE COCHRAN
ADMISSION, CHILDREN 25c
ADULTS, 50c

ways carefully and then proceed slowly.

The other regulatory signs give speed limits, local rules, right turns and are white, upright oblongs that usually have black letters. Signs with red letters usually tell you not to park at any time or at the times stated. Green lettered signs usually tell how long to park or how to park.

The second important type of signs are the Warning markers. Warning signs are extremely useful and call attention to dangers which may not be obvious. A warning sign should automatically put the driver on the alert, causing a reduction of speed and more cautious driving. Warning signs on strange roads at dusk are particularly helpful.

These signs are primarily of three kinds: the round railroad crossing sign, the slow sign and the caution sign. Round signs are a sure indication of railroad crossings. A large cross is painted on the round, yellow sign and the letter R. R. can usually be found. Also at the crossing there may be a blinker light, a crossbar on a post, a flash, a wig-wag signal or crossing gates. Watch for these individual protection measures after you spot the round warning sign.

Diamond shaped signs mean reduced speed for there is some obstacle ahead which requires careful driving. Some of these have written messages while others have drawings to indicate what is ahead. For example, an "S" curve simply has a black "S" painted on the sign. When the road veers sharply, a pointing arrow may be found on one of these diamond-shaped yellow signs or the words "Winding Road" may be spelled out.

A square yellow sign is a caution sign and is also the signal for reduced speed and careful driving. Such a sign may be placed to indicate a road crossing, men working or a school zone.

The third type, the Guide Signs, have various shapes and these direction markers, in addition to naming present road, may indicate distance to nearby towns.

After reading the above sign information, you should be able to answer the following:

1. Name three types of signs.
2. What significance does the shape of a sign have?
3. What is the meaning of a square traffic control sign?
4. Name two places where square signs might be used.
5. What is the meaning of a round control sign?
6. Are round signs usually followed by individual protection devices?
7. What is the meaning of the diamond shaped traffic control sign?
8. Would a diamond shaped sign be found on a twisting road?
9. Does an eight-sided sign mean slow down or STOP?
10. Do guide signs have any definite shape or may they vary?

It must be remembered that sign shapes are vitally important to drivers. You should know instantly the mean of octagonal signs, round signs, diamond-shaped signs and square signs.

Noted Columnist Will Address N. C. Farm Women

North Carolina farm women who attend Farm and Home Week, co-sponsored by the State College Extension Service, and which will be

Poor Management Is Blamed For Poultry Failure

Poor management is probably one of the greatest reasons why many North Carolina poultrymen fail to realize any profit from raising summer-hatched chicks, says Prof. Roy S. Dearstyne, head of the Poultry Department at State College.

Usually the vitality of the late-hatched chicks is much lower than early hatched chicks, he said, adding that eggs used for hatching purposes at this time of year are secured from hens that have laid for nearly a full year, and because of this, are not of high vitality. Consequently, the hatcheryman usually starts eggs that do not hatch well and produce chicks of reduced vitality compared to the spring hatched chicks.

Chicks started in hot weather usually have a rather dormant appetite and do not develop on a comparable basis with early hatched chicks, and as the vitality is down, the chances of disease increases and death from causes other than that of contagious disease germs increases.

Producers starting chicks in the summer should exercise every possible care in management, he said. Ventilation of houses must be carefully watched, especially if the confinement system of brooding is used. Cool nights very often follow warm days and direct drafts on birds during such nights may lead to summer colds, a condition very difficult to handle. Also, wet litter may be a factor aiding the infection of coccidiosis, he added.

REVIVAL MEETING

A revival meeting is now in progress at the Vengeance Creek church, starting last Sunday, August 10. All visitors are cordially invited.

held on the College campus the last week in August, will want to leave the activities taking place on the campus the morning of August 22 to hear a lecture by Miss Dorothy Thompson, noted columnist and world traveler, when she speaks in Raleigh Municipal auditorium. Miss Thompson, who column "On the Record" appears in newspapers throughout the United States and in several foreign countries, started her career in 1913 before completion of work at Syracuse University when she became a leader in the feminist movement on the campus.

After her graduation in 1914, Miss Thompson did organization work for woman suffrage. In 1917 and 1918 she served as a copywriter in a New York advertising agency, and in 1919 she did publicity for social service project in Cincinnati. She sailed for Europe in 1920, with no particular destination in mind, but with a strong desire to study foreign conditions. On the liner were Zionists bound for a conference in London. She persuaded International News to let her cover the Zionist conference, and this was the beginning of her journalistic career.

After the conference Miss Thompson went to Ireland, talked with the Revolutionists, and got several interviews — including the last given by hunger striker Terence McSweeney, the Mayor of Cork. She then went to Paris to do Red Cross publicity, and later, with a space-rate assignment, she went to Vienna.

The next years were a succession of European journalistic exploits. The Polish revolt, the first Karlist putsch in Vienna, during which, disguised as a Red Cross Nurse, she slipped through a double cordon and obtained an exclusive interview with former Emperor Karl and his consort.

She has written several books, including "Listen Hans," "I Saw Hitler," "Refugees," "The New Russia," "Political Guide," "Once On Christmas," and "Let The Record Speak."

Classified Ads

RATES: One cent per word per insertion, minimum of 35c. Cards of Thanks, One cent per word, 50c minimum. Resolutions of respect, memoriams, obituaries, one cent per word. ALL ABOVE ADVERTISING STRICTLY CASH IN ADVANCE.

FOR SALE: Bakery in Ellijay, Ga. New Equipment. Call or write Ellijay Bakery. 4-11

PARTY and HOSTESS TOWELS, personalized. Paper towels, printed in floral rose ink, with floral and angel designs, with name imprinted. 50 for \$1.25. Allow three weeks for delivery. The Cherokee Scout, Murphy, 41-11

The average price received by farmers for eggs in mid-June was 41.5 cents per dozen, 8 cents above the previous June 15.

PROTECT YOUR LOVED ONES With A QUINN & HUMPHREY Mutual Burial Certificate ONLY COSTS 25c TO JOIN QUINN & HUMPHREY Mutual Burial Association Copperhill, Tenn.

SOME SPECIAL BARGAINS

- Nice 6 room house with bath in Country on main highway completely furnished with standing furniture, together with Store house and stock of goods, fish pond, nice lawn, orchard, chicken house and barn and other good features on 1 1/2 acre lot, all for only \$5500. A good business and good home. 4-11t
- 30 acre farm with good orchard, barn, crib, and other out buildings and fair farm house on main highway, with plenty of good timber land and 15 acres good crop land \$2500.
- Four unit apartment house, each unit having 3 nice rooms and bath renting for \$35.00 per month each, centrally located. \$15,000.
- 5 acre farm with nice 5 room house 1 mile from center of Murphy with barn, snake house, wood house young orchard, good land in high state of cultivation only \$4500
- Six room house and 3 acre lot inside city limits of Murphy \$2,000.
- New modern 3 bedroom brick bungalow completely furnished with Gas range, gas refrigerator and water heater and other gas equipment, close in, \$6500. Terms can be arranged.
- 40 acres farm in the edge of town with good house 9 rooms and bath \$5000. Also 5 room house and 3 acres \$4,000.
- 2 lots of over one acre each near highway just outside of City Limits of East Murphy, \$1500 each, also one tract of over 2 acres only \$1500. 5 room house and lot on highway \$3500.
- Five rooms and bath on Peachtree Street, large lot, only \$2500.
- Good 50 acre farm near Peachtree School \$4500.
- Modern 5 rooms and bath close to heart of town \$6500.
- Over 30 acres timber land and 15 acres good farm and orchard land on a main highway 4 miles from town with modern 6 room dwelling with bath and running water, store house, and Gris Mill, ideal location for tourist court and service station. A real bargain \$7500.
- Brand new 6 room brick bungalow close in, small lot only \$5500.
- Brand new modern brick, 6 rooms, hardwood floors throughout, large comfortable, oil furnace heat, full size concrete basement, large lot, good section \$9000.
- 8 rooms, stone veneered \$9000.
- 18 acre farm 1 mile from center of town with 5 room house \$3500.
- Brand new 4 rooms 1 1/2 acre lot 1 mile out \$3000.
- 4 room framed house, large lot \$3500.
- 4 rooms close in, small lot \$3000.

D. M. REESE, Real Estate Phone 214 Murphy, N. C.

FOR RENT — Two-room apartment, electric stove, refrigerator, hot water heater. Adults only. Phone 250. 4-11t

FOR SALE — Home and 38 acre farm, 20 in cultivation, rest in timber. Good stream through property, good outbuildings, 3/4 mile from Peachtree schoolhouse. See Lloyd Simonds. 3-31p

MARBLE DOUGH BOARDS in pink, white, or sterling gray, for sale at Cherokee Scout. 1f

ESTIMATING and BUILDING — Need a Home or Business Building? Need Any Concrete Work Done? We have just received a new two-bag Jager mixer, and are at your service for business by contract by day or by the hour. J. M. Hughes & Son, Murphy Tire Rebuilders, 111 Church St., Murphy, N. C. 50-11c

The Truth About Catholics... Is the Catholic Church really Catholic? You should know the REAL FACTS. Write for free information to Box 395, Whiteville, N. C. 2-10t

LOST: Black billfold, containing drivers license and discharge. Finder please notify A. D. Russell, 203 Hill Street, Murphy.

MULE FOR SALE — 14 years old and weighs about 900 lbs. See G. H. Farmer, 2 miles east of Marble on Highway 19. 4-11p

FOR SALE — Three good milk cows or will trade for fat cows or young cattle. See me in Murphy almost any day at Dickey-Crain Co., Ab Gentry. 4-11t

FOR AVON COSMETICS, see or call Mary Akin, Phone 91-J, Murphy. 3-21p

Fuller Brush Company is reopening territory in Western North Carolina and has opening for ambitious man 25 to 40 with light car to call on established customers. Dealers in adjoining territory averaging \$40 to \$60 weekly. Write Fuller Brush Company, Charlotte, N. C. 3-21c

BEAUTIFUL ENLARGEMENTS — Double weight paper from your favorite negative. 5" x 7", 25c, 8" x 10", 50c. Five from same negative 20% discount. Hutchinson Photo Laboratory, 41 B 1/2 Haywood Rd., Asheville, N. C. 2-31p

BUYING OR SELLING? — For quick, positive, confidential action to buy or sell a business in Western North Carolina consult the Fidelity Business Brokers, suite 205-206 The Jackson Building, Asheville, N. C., Phone 3166. 2-10t

MONUMENTS of quality. Keener Monument Works, Tomotla, North Carolina, five miles east of Murphy, N. C., on Highway No. 19. 34-26tp

FOR RENT — Bates rooms, private bath, Phone 117-W or 169-XJ. 1-41c

ANKLETS — 11 Pairs for \$1.00 by prepaid parcel post. Slight imperfections of regular 25c - 35c fine anklets for infants, children, or ladies. Cuff tops, assorted colors. Please state sizes. Southern Sales Company, P. O. Box 2029, Dept. BPB, Knoxville, Tenn. 4-11c

LAST — One white and black spotted female Walker dog, small, in or around Payne Mountain. Anyone knowing its whereabouts notify Elbert Hughes, Rt. 2, Murphy. Reward \$5. 4-31p

"All Is Not Gold That Glitters"

You can't judge entirely by appearances. All insurance service is not the same. Let us show you what we mean by "Service Beyond the Contract." You must have faith in your agent, for when you buy insurance, you place yourself and your future in his hands. You can feel entirely safe in entrusting your insurance problems to us.

C. E. HYDE

GENERAL INSURANCE

Phone 145 Murphy, N. C.

ATTENTION MERCHANTS

We have on hand several items which have been slightly damaged in shipment — now offered for sale at prices below wholesale listings.

- Rolled Oats
- Macaroni
- Flour
- Enamel Pans

VARIOUS OTHER ITEMS

SOUTHERN RAILWAY DEPOT

Phone 55 Murphy, N. C.



School Opens September 1

ARE YOUR CHILDREN'S FALL CLOTHES READY?
ARE YOURS?

School Days Mean Cool Days

And cool days mean that those fall and winter clothes will have to be taken out of summer storage and moth balls for usage in the near future.

Why not let us give your cool weather clothes a thorough cleaning today? Our efficient methods of cleaning, prompt delivery and service guarantees you complete satisfaction.

MURPHY LAUNDRY

B. B. Cornwell, Prop.

Phone 159

Murphy, N. C.

WANTED---OAK TIE LOGS

Apply for prices and specifications in our office

Cherokee Lumber Corporation, Murphy, N. C.

SPECIALS

MYERS WATER SYSTEMS
Deep and Shallow Well

PRESSURE GUAGES AND SWITCHES

MYERS DEEP WELL HAND PUMPS

BULK SEED

Evergreen Dawn Grass—Dwarf Essex Rape
Seven Top Turnip — Purple Top
White Globe Turnip

PRESSURE COOKERS — PRESTO
Wear-Ever, Mirro-Mat-Ic and Nesco

Small shipment genuine FIESTA WARE
dishes - open stock

FOLEY FOOD MILLS

Murphy Hardware Company

Quality Hardware Since 1906 Phone 25