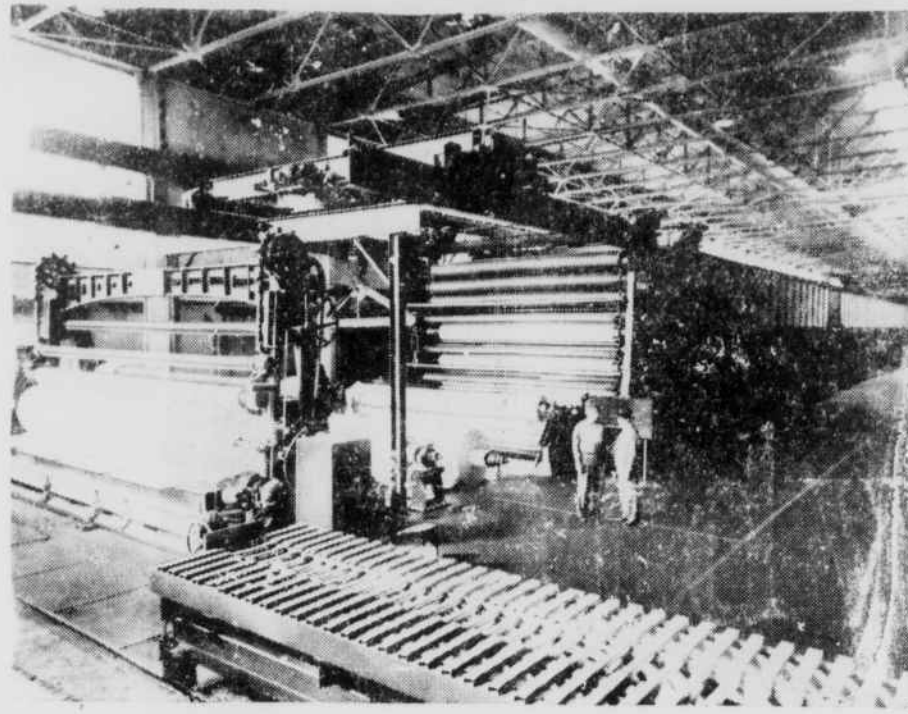


Champion Is Inviting Local People To Open House May 4, 5, 6

CANTON—The Champion Paper and Fibre Company and the Town of Canton are rapidly completing elaborate preparations to entertain an estimated 10,000 Western

North Carolinians who are expected to converge here next Tuesday, Wednesday and Thursday, May 4th, 5th and 6th, to attend Champion's first "Open House." Champion has extended a cordial invitation to the people of Western North Carolina to make a tour of their vast mills here during open house, and see each step in the process of converting our native trees into finished paper. Numerous committees have been hard at work for several weeks

Huge Paper Making Machine on Display



Number 11 Machine will be one of the focal points of interest for visitors who tour the plant of The Champion Paper and Fibre Company at Canton, during "open house" days, Tuesday, Wednesday and Thursday, May 4th, 5th and 6th. This machine is the largest

and most modern in the world for making white papers. It is capable of producing a continuous sheet of paper 221 inches wide at speeds up to 1,300 feet per minute. In one day it can produce enough paper to cover a two-lane highway from Canton to the Atlantic Coast.

The people of Western North Carolina have been extended a cordial invitation to visit Champion's plant on open house days and see this huge machine in action, as well as the other processes used in the manufacture of paper from our native forest products.

with detailed plans to assure a maximum of convenience for Champion's guests during their visit.

Six full hours of each of the three days have been allotted to the general public to view this great plant which has been one of the leading industries of Western North Carolina for more than forty years. Without disruption to production, visitors will see the most modern and largest machines in the world for the manufacture of the higher grades of paper.

Guests may register for the trip through the mill between the hours of 8:00 and 10:30 each morning and from 12:30 to 4:00 each afternoon. Registration will be made at the Champion Y. M. C. A. where each visitor will be given an illustrated souvenir booklet containing pertinent information about the machines and processes that will be seen on the trip. Children from 11 to 14 years of age must be accompanied by an adult.

After registration visitors will move through the mill, guided by directional signs and by courteous guides who will be stationed along the route of travel to supply any

information that may be desired. Visitors may observe for as long as they wish any phase of the manufacturing of paper, from the virgin pulpwood until the finished product is loaded into freight cars. The tour will consume from one-and-a-half to two hours time.

At the end of the route refreshments will be served at Champion's new Cafeteria. Here visitors will see an attractive display of Champion's products, and will have an opportunity to become acquainted with the activities of the many agencies for developing the spirit of cooperation and good fellowship which characterizes the Champion organization.

A word-sketch of the route of travel will give the prospective visitor an insight of the many interesting processes he will see during his tour of the Champion plant. He will see the pulpwood, straight from the forest, being stripped of bark in huge tumblers and fed into the maw of a giant chipper that reduces the average stick of pulpwood into small chips in less time than it takes to read this sentence.

The visitor will see these chips conveyed to the great digesters where they are chemically "cooked" under pressure to separate the papermaking cellulose fibres from the lignin binder in the wood. In subsequent processes these fibres are washed, screened, bleached to a high degree of whiteness, and washed again before they are ready to go to the paper and paperboard manufacturing departments.

In the beater room the visitor will see the fibres being prepared for papermaking by the addition of various chemicals and dyestuffs. He will follow these fibres as they flow onto the great machines and form a web of rough, wet paper that is dried and processed to a smooth finish in one continuous operation.

Following up the actual manufacturing, the visitor will see the large reels of paper from the machines being reduced to sheets or small rolls in the finishing department, carefully sorted and prepared for shipment to customers all over the United States.

Other sights along the route of travel that will prove intensely interesting will be the largest tannin extract plant in the world, the plant for manufacturing the Chlorine used in bleaching pulp, plants for making by-products such as turpentine and rosin, plants for reclaiming used chemicals, the huge power plant where all the steam and electricity are generated to operate this vast mill, and the modern machine shop, carpenter shop, electrical shop, foundry and metal shops that are necessary for maintenance of the plant.

It is anticipated that Champion's open house will be the biggest event ever put on by a local industry. Officials of the Town of Canton are making special arrangements for parking private automobiles, but they advise visitors to use public conveyances wherever possible so as to avoid this worry.

Production of milk per cow in North Carolina averaged 330 pounds during March compared with 286 pounds during February. Small grains in the State are doing nicely and stands are better than average.

BIRTHS

ANDREWS—Mr. and Mrs. Roy Wheeler of Elizabethton, Tenn., have announced the birth of a 7^{1/2}-lb son, Albert Eugene, on April 23. Roy Wheeler is the son of Mr. and Mrs. Bert Wheeler of Andrews.

ANDREWS—Mr. and Mrs. B. E. Ahlport of Los Angeles, California, announce the birth of a son, Daniel Boone, on April 10. Mrs. Ahlport is the former Miss Margaret Boone, daughter of Mrs. J. M. Boone of Andrews.

SUBSCRIBE TO THE SCOUT

A Better Place To Live

We are proud of the part we play in making this a better place to live. Our low cost electricity serves us where we work, where we live and where we play. It takes the drudgery out of the home . . . puts more profit in our business.

An adequate supply of low cost electricity is a necessity for the proper growth and development of a community. It is our privilege to supply you with this low cost electricity. Use it with the assurance that nothing gives you more for your money.



CITY OF MURPHY Electric Dept.

Europe's 1948 wheat and rye crops are expected to be well above those of last year.

Adequate farm labor is reported available in the southeastern part of the State, but many other sections report a scarcity of labor.

Support Your School Band

Keep out of trouble this Summer



Motorists—don't let car troubles get your goat this Summer.

Avoid costly repairs. See us now—for Sinclair-ize for Summer Service. With this special service, we protect your car ten ways against summer wear.

WE LUBRICATE		WE CARE FOR	
Motor	Differential	Tires	Oil and Air Filters
Transmission	Chassis	Front Wheels	Battery
Spark Plugs	Radiator		

SPECIAL COMBINATION PRICE SINCLAIR-ize YOUR CAR NOW



ALVIN BUCHANAN

JAMES BRYSON

2nd - Cherry Sts., Andrews, N. C.

Main Street, Marble, N. C.

BEN PALMER'S SERVICE STATION

Valley River Ave., Murphy, N. C.

ALLISON AND DUNCAN, AGTS.

Phone 359-J

Murphy, N. C.

FARM

Fertilizer

Improved formula of nitrogen, phosphorus, potash.

Aids That Produce!

Grain

Finest quality to produce large, healthy animals.

Hybrid-Corn

Produces the largest, best ears of corn.

Feed-Seeds

Highest quality for the best results.

You can't run a successful farm on promises . . . that's why we don't talk about our products . . . their high yielding results speak for themselves. Quality is tops . . . prices are way down.



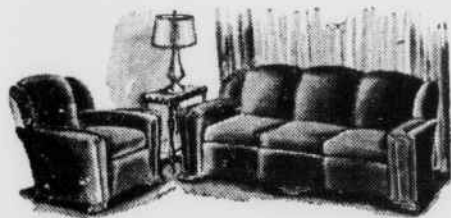
CHEROKEE CO. FARMERS' COOP., INC.

Church St.

Phone 266-W

DRESS UP YOUR HOME for Spring

This is Shop in Murphy Week



May 1-8



Living Room Suits

Odd Chairs

Tables

Bed Room Suits

Lamps

Wardrobes

Washing Machines

Philco Refrigerators

Easy-spin dryers

Kitchen Cabinets

Coal & wood

dinettes

Ranges

Radios

Phonographs

Come in and Check our stock to-day.

Cherokee Furniture Co.

Phone 90

Murphy, N. C.