

COLBERT TO JAPAN Japan from Fort Campbell, Ky., in PFS Jay M. Colbert, 23, son of Mr. and Mrs. Yancy Colbert, Rt. 3, scope, the Army's new unit rotation plan.

MARTIN TO RETURN

PFC Franklin D. Martin, 22, son of Mr. and Mrs. Fred Martin, of Route 3, Murphy, is scheduled to leave Germany for the U. S. in July as part of Operation Gyro-scope, the Army's new unit rotation plan.

Martin's unit, the 1st Infantry Division, is being replaced in Europe by the 10th Infantry Division. The two divisions are the first units to take part in the transfer plan.

A supply clerk in Battery A of the division's 48th Anti-Aircraft Artillery Battalion, he entered the Army in August 1953 and arrived in Europe in March 1953.

Martin was graduated in 1953 from Murphy High School.

Handicraft Map Is Published

A handicraft map of the Southern Highlands was issued this year, the first of its kind in the world.

The map has locations of craft shops and workers, where visitors are welcome, marked for the traveler. Copies of the map are available upon request to the Asheville Chamber of Commerce, Box 7497, Asheville, N. C.

The annual craftsman's fair will be held next week in the Asheville City Auditorium.

Friends Invited To Mease Tea Sunday

Friends of Mr. and Mrs. E. C. Mease, Sr., of Hayesville, are invited to attend the tea Sunday, July 17, honoring their 50th wedding anniversary.

The Meases' children will entertain for their parents at a tea from 2 to 6 p. m. at the home of the Meases' Sr.

Large numbers of cattle on farms assures high slaughter in 1955, though probably below 1954. This along with prospects for continued strong demand points to stability in prices.

5.5hp
BRAKE
30 pounds

Here's the
KING
of them all!

**HOMELITE MODEL 5-30**

It's the most powerful, fastest cutting one man chain saw ever developed. It brings down trees 5 feet or more in diameter and cuts in any position. Most important it stands up under the grind, requires minimum maintenance, saves time and money on any production job.

Seeing is Believing

Come in and ask for a free demonstration.

For Service and Saws
You Can **DEPEND ON**

RADFORD HOMELITE SERVICE

Phone 84

Murphy, N. C.

See us for reliable insurance
in any line
HYDE INSURANCE AGENCY
Phone 145 Murphy, N. C.

**ANNUAL
FARMERS
FEDERATION
PICNIC**



Saturday, July 16th — 10 A. M.
Peachtree School
Murphy, N. C.

PANHANDLE PETE

AND THE
FARMERS FEDERATION
STRING BAND

FEATURING

JOE FRANKLIN — JIMMY BUCHANAN — DARRYL PETTY
FREE WATERMELON!
FREE LEMONADE

\$10.00 PRIZE

FOR BEST LOCAL ACT

Other Prizes For Largest Truckload
Of Picnickers And Contest Winners
ALL

CHOIRS MUSICIANS,
SINGERS AND DANCERS
ARE
ESPECIALLY INVITED

Private First Class Colbert will be flown into the Far East with approximately 4000 other members of the 508th Airborne Regimental Combat Team in giant C-124 Globemasters. The 508th will replace the 187th RCT.

A member of the team's Company A, he entered the Army in February 1951 and completed basic training at Fort Bragg, N. C. He is a veteran of the Korean conflict.

To control corn earworms, apply dusts containing 10 per cent DDT every second day from the time silks appear until they dry up or corn is harvested.

MOVING?
Call...

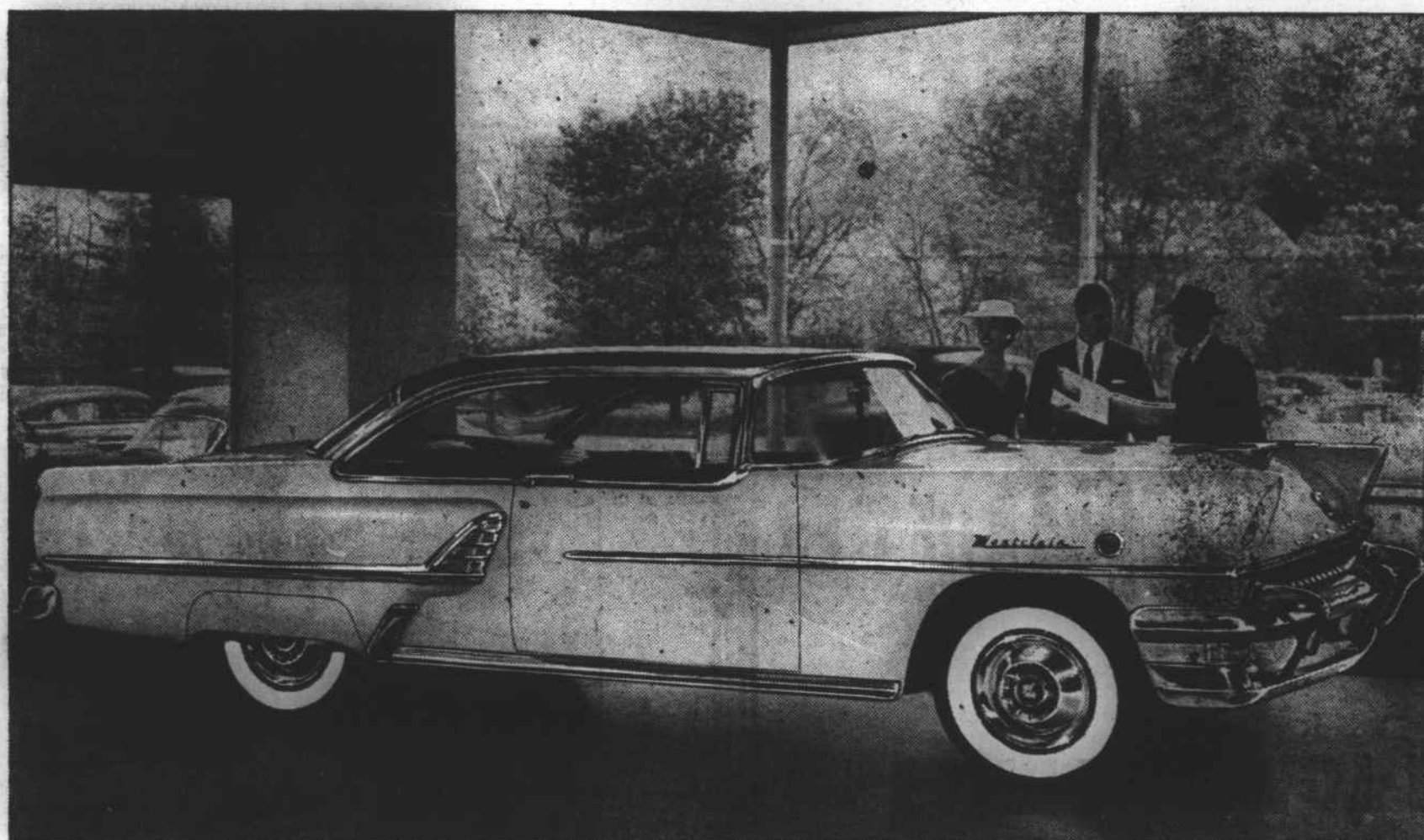


Palmer Bros. Trucking Co. Inc.

Phone 202

Murphy, N. C.

IT'S HOT! MERCURY'S RISING! RECORD SALES MEAN RECORD DEALS



THE NEW 198-HORSEPOWER MONTCLAIR HARDTOP COUPE, shown above, is one of Mercury's 11 models, in 3 series. There is a Mercury priced to fit any budget.

As Mercury sales go up—your cash outlay goes down
Don't miss the biggest summer savings yet!

YOU SAVE 4 WAYS

No summer slump here! Mercury sales are still booming. That's why we can offer you such a generous allowance for your present car. Mercury prices start below 13 models in the low price field*—so you can save even more cash. But that's just a starter. Mercury's famous operating economy and low upkeep save you still more. And remember: Mercury consistently leads its field in value at trade-in time—as independent surveys clearly show.

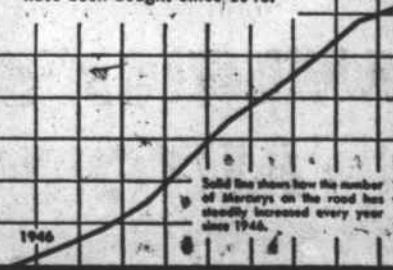
*Based on a comparison of manufacturers' suggested list or factory retail prices using a Mercury Custom 2-door Sedan (not illustrated).

AND LOOK WHAT YOU GET

Exclusive styling shared by no other car. 11 models in 3 series to choose from. A bigger-all-over Mercury—in length, width and wheel base. A new super-compression SUPER-TORQUE V-8 engine—198 horsepower in the Mercury Montclair (shown above); 188 horsepower in the Mercury Custom and Monterey. Plus all these extra-value features at no extra cost: a 4-barrel vacuum carburetor, anti-fouling high compression spark plugs on all models; dual exhausts on Montclairs and Monterey. See 'em! Try 'em! To save the most, act now.

THE BIG MOVE IS TO MERCURY

Mercury is setting new sales-records every month. More than 2,000,000 Mercurys have been bought since 1946.



Citizens Bank & Trust Co.

Murphy—Andrews—Robbinsville

Hayesville

Serving Southwestern North Carolina

Member Federal Deposit Insurance Corporation

IT PAYS TO OWN A

MERCURY —FOR FUTURE STYLING,
SUPER POWER

Evans Auto Co.

VALLEY RIVER AVENUE