

Garden Time

By ROBERT SCHMIDT

Are you getting tired of running the cultivator and weeding the hoe in your garden in a losing battle with weeds and grass? Why not use a mulch?

It is surprising how few gardeners make use of mulches as an aid in the conservation of soil moisture and the control of weeds. A mulch may be any material such as hay, straw manure, leaves, leafmold, peat, sawdust, pine-straw or heavy paper which can be put down on the ground plants

for the purpose of conserving moisture during the hot, dry summer weather. At the same time it will keep down most of the weeds. Cardboard boxes, flattened out, have been used with excellent results. Ground corn cobs are also being used.

Many vegetables, flowers, small fruits and shrubs are good subjects for mulching. Dahlias, tomatoes, peppers, eggplants and cucumbers may be mulched with straw, leaves, cardboard or heavy paper. Azaleas, camellias, and blueberries which desire an acid soil may be mulched with sawdust, leafmold or peat. Red raspberries, dewberries and grapes may be mulched with straw or straw manure.

Most mulches should be put down after the soil has been well moistened by rain or irrigation. If fertilizer is necessary it also should be applied before the mulch is laid down. However, soluble fertilizers will work their way down through porous mulches.

If mulched plants show a yellowing of the leaves it usually means a nitrogen deficiency due to the decomposition of the mulch in contact with the soil. This can be corrected by applying some soluble fertilizer high in nitrogen.

You will find that in small gardens a mulch will help solve many of your cultural problems.

Potatoes were the only food in a list of 18 commonly used in the daily diet which showed less cost increase than milk during the period of 1939 to 1955.

STOP THAT ITCH! IN JUST 15 MINUTES.

If not pleased, your 40c back at any drug store. Try instant-ITCH-ME-NOT for itch of eczema, ringworm, insect bites, foot itch or other surface itch. Easy to use day or night. Now at Parker's Drug Store.

Don't Neglect Slipping FALSE TEETH

Do false teeth drop, slip or wobble when you talk, eat, laugh or sneeze? Don't be annoyed and embarrassed by such handicaps. FASTEETH, an alkaline (non-acid) powder to sprinkle on your plates, keeps false teeth more firmly set. Gives confident feeling of security and added comfort. No gummy, soapy, pasty taste or feeling. Get FASTEETH today at any drug counter.

Beekeeper Catches Many Questions

The beekeeper is often asked: When does the honey flow start? Or "when is the right time to put on supers?"

W. A. Stephens, State College extension beekeeper, says that by keeping records during the last few years, he has found that the honey flow coincides with the blooming of the tulip tree or tulip poplar (a woodsman may call it yellow poplar).

Stephens says that one of these trees in the open may have thousands of blossoms, each of which secretes enough nectar to keep several bees busy lapping it up. Secretion takes place in the early stages of bloom and often bees may be seen burrowing down into

a bloom about the time it is beginning to open.

So, Stephen advises that when the tulip trees are buzzing with bees searching for nectar, it's time to bring on the super.



SQUARE DANCE
E.A. TUES. NITE-8 to 12 P. M.
"EVERYBODY WELCOME"
CRAWFORD'S
SKATING RINK



TWO FAMILIES of children at Hiwassee Dam School took perfect attendance awards at commencement exercises recently. All children in each family were neither absent nor tardy any school day this year. A number of other children also received perfect attendance award. In the photos above are left to right, the three sons of Mr. and Mrs. Clarence Morrow, James Robert Morrow, fifth grade; Edward, fourth grade; and Richard, third grade. In the other photo are the five children of Mr. and Mrs. W. Z. Leonard, left to right, Billy, eighth grade; Johnny, fifth grade; Joan, fourth grade; June and James, first grade.

Jimmy Israel Has Birthday Party

Mr. and Mrs. James Israel honored their son, Jimmy, on his fourth birthday with a party at his home May 29.

Among those who came by during the party were his grandmother, Mrs. Tom Palmer, his great-grandmother, Mrs. Myrtle Hubbard two great aunts, Mrs. Hubert Hinton and Miss Winnie Hubbard;

his aunt, Linda Palmer and great aunt helped with entertainment.

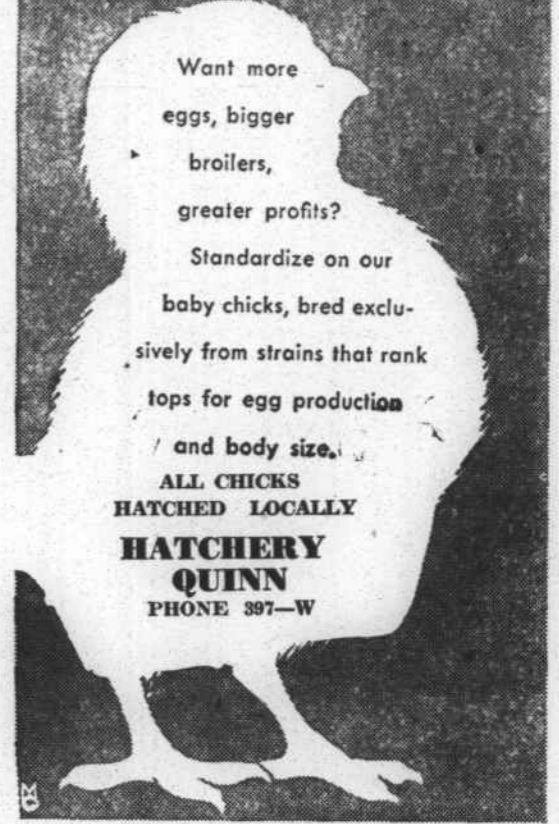
Other little guests were Donna and Debbie Vest, Hubert and Gus Hinton, Tommy Palmer, David Fowler, Donald Lee Ledford and Jimmy's brothers, Gary and Johnny.

After games were played, Jimmy opened his gifts and refreshments were served and favors were presented to guests.

PURE BRED CHICKS

Want more eggs, bigger broilers, greater profits? Standardize on our baby chicks, bred exclusively from strains that rank tops for egg production and body size.

ALL CHICKS HATCHED LOCALLY
HATCHERY QUINN
PHONE 397-W



LOST YOUR KEYS!
PHONE 169
CITY LOCK SERVICE!
Keys by Code or Duplication
Combinations Changed ...

Just tell us how much you need



...and you're on your way fast with a low-cost auto loan!



Citizens Bank and Trust Co.

Murphy-Andrews-Robbinsville

Hayesville

Serving Southwestern North Carolina

Member Federal Deposit Insurance Corporation



GMC's new Model W550

makes earth-moving more profitable five ways:

BIGGER LOADS

Over-size tandem axles (34,000 lbs. rated capacity)—double frame or L-type reinforcement available.*

FASTER TRIPS

210-hp V8 means quick get-up-and-go, on or off road!

ENDS SHIFTING LAGS

Hydra-Matic Drive* zooms it up ramps in one steady sweep—takes off faster—makes more trips—keeps drivers happy!

EASIER HANDLING

Better weight distribution—Hydra-Matic and Safety Power Steering*—make maneuvering easier.

LOWER COSTS

Economical operating costs—far less down-time—GMC quality at a real competitive price.



Big choice of Blue Chip GMC's waiting! Model W550 (40,000 GVW) is one of a wide range of heavy 4- and 6-wheel construction models. Come in and write your own ticket!

See us, too, for Triple-Checked used trucks

New Sinclair Power-X Gasoline Gives You 10 Times More Power for Safer Passing



For quick acceleration to pass another car safely, you need ten times more power than normal cruising demands. Sinclair Power-X Gasoline gives it to you—fast!

RESERVE POWER WHEN YOU NEED IT

Even though you are a most careful driver, you often find yourself in emergency driving situations where you need to call on reserve power for safety.

Sinclair Power-X Premium Gasoline gives you this reserve power. Furthermore, when compared with ordinary gasoline and oil, tests show that Power-X Gasoline in combination with new Sinclair Extra Duty

Triple X Motor Oil, can give you over 20% more useable power. You get this extra power because of Sinclair's new high-octane refining methods, plus chemical elements added to prevent stalling and guard against fuel system rust. For highest anti-knock, quick acceleration and reserve power when you need it, see your Sinclair Dealer and power up with Power-X.



Power up with

SINCLAIR POWER-X

FRANCHISE DEALER 1222
CHEROKEE PONTIAC CO.
Hiwassee St. Murphy, N. C. Phone 243