



# MERRY CHRISTMAS



2  
Shopping Days  
Til Christmas

## The Cherokee Scout

DEDICATED TO PROMOTING CHEROKEE COUNTY

2  
Shopping Days  
Til Christmas

VOLUME 67 NUMBER—22

MURPHY, N. C., MONDAY, DECEMBER 23, 1957

TEN PAGES THIS WEEK

PUBLISHED WEEKLY

# Woodenware Industry Locates In Murphy

## Hiwassee Dam Resort Site To Go On Auction Block

The 547-acre recreation resort site adjacent to Hiwassee Dam in this county is to be sold at public auction.

This was announced this week by the TVA who said the date of the sale would be set as soon as

the first bid was entered. Minimum acceptable price is \$190,000. Final price will be determined by bidders at the auction, it was announced.

The site, long known as Hiwassee Village, served as a construction camp during the building of Hiwassee Dam, 1936-40. Located at the site are 42 permanent-type frame houses, 13 other houses, a frame building suitable for remodeling for use as offices, crafts or concessions, and other buildings. Some of the buildings have only salvage value.

The area has a black top road system, and an underground distribution system for water and sewage.

The site is composed of several tracts. One of these contains 105 acres and improvements are located on this tract. TVA stipulated that this tract must be used for recreation purposes only, and that it must be developed and operated for public commercial resort purposes for at least 20 years.

TVA also stipulated that the successful bidder will be required to invest a minimum of \$200,000 in rehabilitation and expansion of the properties within five years from the date of purchase. \$80,000 must be invested within two years of purchase.

Immediate road access to the site is by N. C. 294. The site is 110 miles from Asheville and 98 miles from Knoxville. It is 95 miles from Fontana Dam, 110 miles from Gatlinburg and 77 miles from Cherokee, southern entrance to the Great Smoky Mountains National Park.

The site is adjacent to Hiwassee Dam, second highest in the TVA system, and affords access to two lakes, Hiwassee and Apalachia.

The auction will be held in Chattanooga. Robert J. Coker, of TVA's Land Branch, Chattanooga will be in charge of the sale.

## Gifts Came Early To Warm Hearts - And Feet

The hearts—and feet—of 157 children in three Western North Carolina institutions were warmed this week as Christmas gifts came a little earlier than Santa's annual visit.

Each of the children at the Mountain Orphanage, The Elida Home and Asheville Orthopedic Home received nice warm bedroom slippers.

The youngsters were fitted with the shoes, and most of them were reluctant to take off the gifts.

One little girl, with long curls, made sure her younger brother had a pair of slippers before she would try on a pair.

The scene at each of the three places was about the same—jubilation to the nth degree, and the occasion created a spirit of happiness which will undoubtedly last the week long until Christmas—and beyond.

The happiness of the youngsters was not to be compared to that of their donor, Heinz Rollman, president of Welco Shoe Corporation, Waynesville.

## Cancer Center To Be Closed December 27

The Cancer Detection Center in Sylva will be closed Friday, Dec. 27, according to an announcement from Dr. R. W. Kirshberg.

The Center will be open Friday, Jan. 3.

## Murphy Teams Win Double Victory Over Nantahala Here Tuesday

By BETTY WEAVER

Murphy's basketball teams romped to a double victory over Nantahala to christen the new basketball court here Tuesday night. The Murphy sextette won 66-48; the boys 48-43.

The girls bounced back with a bang. They played hard and fast keeping the Nantahala team in a spin. The guards played a terrific game. Nantahala's forwards had a rough time keeping the ball when they did get it.

High scorer was Shirley Stiles with 38 points. Alice Jean Palmer shot 10, and Joan English threw 13. Starting guards were Betty Wilson, Gloria Bowman and Jane Cook.

Substitutes were Betty Postell who made 3 points, Helen Stiles, who added 2 more. Jan Van Horn, Marcelle Roberson, Girene Taylor, Neta Kimbrough, Jearlean Stiles, Pat Barnett, and Jane Allen.

Fouls ran like water. Cook and Bowman fouled out. Wilson and Taylor had four each. Murphy made 24, and Nantahala 21 for a total of 45 fouls.

Murphy hit 24 field goals and 8 free throws. The free throw percentage was 38.

Although Nantahala scored first, Murphy led all the way. Score by quarters was 13-11, 30-22, 49-34 and 66-48.

The Murphy boys didn't let their fans down either. They led all four quarters as is their custom. Score by quarters was 16-7, 25-18, 38-30, and 58-43. Fouls were extremely high. Amos and Morris fouled out. McDonald, McSwain, and Carringer had four each. In all, 47 fouls were made, 31 of them being Murphy's.

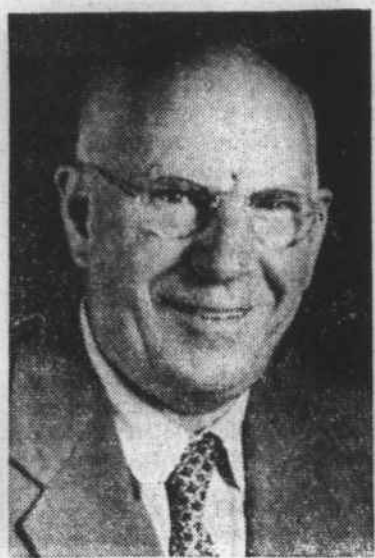
The boys shot 24 field shots and 8 free throws for a free throw percentage of 40.

John Morris was high scorer with 17 points. Burt Birchfield made 13, Emanuel McDonald added 9. Don Amos contributed 6, and Roy Dockery hit 4. Of the substitutes Jimmy Carringer added 7 and Billy Carringer 2. Other subs were Frank McSwain and Lonnie Hoover.

The next game will be Jan. 7, against Hayesville at Hayesville.



MISS PEGUES



MR. KEENUM



MRS. PEARSON

## Juliet Pegues, R. L. Keenum Named "Teachers Of Year"

Miss Juliet McKie Pegues of Murphy High School and Robert Lee Keenum of Hiwassee Dam School have been named "Teachers of the Year."

Mrs. Gertrude Harper Pearson of Texana School was runner-up in a contest sponsored by Murphy Woman's Club. The Woman's Club selected Miss Pegues and Mr.

Keenum was elected by the faculty at Hiwassee Dam School.

Miss Pegues' name will be entered in the district Woman's Club competition which includes clubs west of Canton. The district winner's name will be entered in the state contest and that winner will vie for honors in the National Woman's Club Federation contest.

## Student Night To Be Observed At First Baptist

"Student Night At Christmas" will be observed at the First Baptist Church, Dec. 29, at 7:30 p. m.

The theme of the program will be "We Believe . . . and So We Speak", with the following students taking part: John Morris, Linda Greene, Bill Browning, Lowell Scruggs, Frankie Martin, Ray Simms, and Gordon Bates.

Special music will be rendered by the Youth Choir.

The Rev. Morris' sermon topic for the morning service will be "The Year for Christ".

A school of church music will be conducted at the church Jan. 6-10 from 7:30 to 9 each evening, by Joseph Stroud, secretary of music for the North Carolina Baptist Convention.

There will be periods of musical instruction as well as choir rehearsals.

All choir members and directors from the various Baptist churches of both the Western North Carolina and West Liberty Association are urged to attend.

## Scout To Close Christmas Week

Today's issue of the Scout will be the last this year. The newspaper office will be closed during Christmas week.

The Scout's next edition will be published Jan. 2.

## Potters At Home

Mr. and Mrs. Robert A. Potter will be at home at the Manse, Thursday, December 26, from 7:30 to 9:30 to members of the congregation and friends.

## Lions Collecting Funds For Baskets For Needy Families

What goes into the 120 Christmas baskets Murphy Lions will pack for needy families of this area will largely depend on you.

Lions are accepting contributions for the baskets at gift stands on the square. Approximately \$300 is needed to put the drive over the top and provide a full basket for the 120 families.

Charles Johnson is chairman of the collections.

The Lions club pony will be given away on the square Saturday at 5 p. m.

## Murphy Teenagers Go Modern At Christmas Party

For their annual Christmas party the DD's (a group of Murphy teenagers) went all out to make their party a modern one.

They turned the TAC into the Pink Slipper, a night club. The decorations were pink and silver throughout. The tables were laid with white cloths and pink candles.

The Christmas tree was sprayed with snow, covered with pink angel hair, pink and silver ornaments and pink lights. Even the punch and hors d'oeuvres were pink.

The program was light and fanciful.

Each girl had some part in the program or in serving as well as planning and decorations.

## More Clothes Needed For Underprivileged

Another appeal for used or new clothing for underprivileged school children has been made by the Murphy PTA.

Officials said many more warm clothing and shoes are needed.

Garments may be left at Lay's 5 & 10 cent Store.

## Margaret Studios Start Operation In Fain Building Here Next Month

A new industry will begin operating in Murphy shortly after Christmas.

The Chamber of Commerce this week announced that Margaret Studios, Inc. manufacturers of fine gift woodenware, will move here from Antigo, Wis.

The new business will be located in the W. M. Fain Building next to the Henry House on Tennessee Street. This building will provide approximately 11,000 square feet of space for the new plant.

Organized in 1945 the business

was incorporated a year later and is operated by both Mr. and Mrs. Clarence J. Schroeder. Their products are nationally distributed through approximately 400 dealers. One of their largest accounts is Macy in New York.

Chamber officials, who have worked closely with the Schroeders for the past several weeks, said the Wisconsin plant is being closed and the entire operation is being moved to Murphy.

About 30 persons were employed by Margaret Studios in Wisconsin and plans are to enlarge the operation here. The business employs mostly men skilled in woodwork.

The present plant superintendent will come to Murphy with the Schroeders while all other employees will be local.

The Wisconsin operations included two factory buildings and a retail factory store. The Chamber of Commerce said plans are to erect a retail factory gift store here to appeal to tourist and local trade.

Mrs. Schroeder, known as "Margaret", is originator of all the firm's hand decorating designs and usually operates the gift shop. Mr. Schroeder has charge of the manufacturing and selling. Both handle various trade shows the firm conducts.

Mr. Schroeder told Chamber officials here, "I know from past experience that we can attract tourist from as far away as 200 miles off their course. If we have anything to say about it, a lot of people are going to know where Murphy, N. C., is that never knew before."

"Every article we make will carry our trademark and address."

One of the most recent creations in wood by Margaret Studios is the "Flaming Susan" and revolving Hors D'oeuvre Server.

The piece can be used as "The Flaming Susan" by removing the bowl from the top and placing a can of "sterno" in the middle. As an Hors D'oeuvre server the bowl is used on top for shrimp, sauce or wet relish. It revolves on its own ball bearing base and has two different size holes for toothpicks and meat skewers.

Margaret Studios manufactures all types of decorative wooden plates, lazy susans, ash trays, nut bowls, salad bowl sets, snack bowls, paddle boards, hamburger press sets, bowl and butcher blocks, trays, book ends, tools and hundreds of other items.

## Cost Over \$900,000 To Pave

## CHEROKEE COUNTY HAS 40 MILES UNPAVED RURAL SECONDARY ROADS

Cherokee County has 40.10 miles of unpaved rural secondary roads and estimated cost of paving is \$908,518.42.

These figures were included in a recent completed report on the first phase of a state-wide study by the Department of Secondary Roads of the State Highway Department.

Nineteen Western North Carolina counties have a total of 822.24 miles of unpaved rural secondary roads which carry 50 or more vehicles per day, and the

cost of paying them is estimated at \$15,118,896.06.

The study shows that statewide there are 9,330.48 miles of unpaved secondary roads with 50-vehicle-per-day traffic and that total paving cost would be \$129,976,638.48.

The second phase of the survey will deal with substandard bridges in the secondary road system, and the third phase will show what would be necessary to bring all rural unpaved secondary roads up to minimum service levels.