

### The Cherokee Scout

Established July, 1888  
Published every Thursday at Murphy, Cherokee County, N. C.

RICHARD GOLEY Editor ROY A. COOK Publisher

SUBSCRIPTION RATES  
In Cherokee County: One Year, \$2.50; Six Months \$1.50. Outside Cherokee County: One Year \$3.00 Six Months, \$1.75

Second Class Postage  
Paid At  
Murphy, N. C.

### WORDS OF LIFE

By R. T. HOUTS, Pastor,  
First Methodist Church,  
Murphy, N. C.

"And he said, So is the kingdom of God, as if a man should cast seed into the ground . . . It is like a grain of mustard seed, which, when it is sown in the earth, is less than all the seeds that be in the earth: But when it is sown, it groweth up, and becometh greater than all herbs." Mark 4: 26-32.

Jesus Christ had the ability to illustrate eternal truth in the simple, everyday experiences of men. Those who heard Him knew what He meant when He spoke of the seed growing secretly in the ground, or the mustard seed, which was the tiniest of seeds

becoming as large as a tree. Jesus taught us that there is purpose and direction in God's world, and that the whole race of men is moving in the direction which He has ordained. If we can accept this belief, clearly taught by Jesus Christ, then we are able to see that those who live in obedience to God do not waste their lives regardless of what seeming tragedy may overtake them.

These two parables, however, do not teach a faith in automatic progress. Jesus did not tell us to sit back and wait for the kingdom to come. Without repentance and faith on the part of individual men; without a serious effort to live as God would have us live, the only progress the world can make is toward ultimate tragedy. No careful reading of the Bible can miss the basic teaching that God can do without those who refuse to be obedient to Him. History teaches the same lesson. Civilizations have come and gone. Many of the hopes and personal ambitions of men lie buried in the dust of the centuries, but the work of God goes on. God can use us if we will let Him, but He does not have to have us. The important decision for each of us is whether we will let Him use us and whether we will become part of God's Kingdom which is present today in every believing heart.

Also, in these two parables we find clearly taught God's law of gradual growth. The understanding of the laws which govern physical growth should help us to understand the laws which govern spiritual growth. Jesus showed

### Crossword Puzzle

1	2	3	4	5	6	7	8	9	10	11
12	13	14	15	16	17	18	19	20	21	22
23	24	25	26	27	28	29	30	31	32	33
34	35	36	37	38	39	40	41	42	43	44
45	46	47	48	49	50	51	52	53	54	55
56	57	58	59	60	61	62	63	64	65	66

- ACROSS**  
1. Reckless  
5. Ballet step  
8. Ages  
12. Open space  
13. Insect  
14. Oxidation  
15. Evil spirit  
17. Fodder grass  
19. Fruits  
21. Ordains  
22. Often; poet.  
25. Not dense  
28. Steamship: abbr.  
29. Exist  
30. Foot bones  
31. Chemical compound  
33. Silkworm  
34. Toward  
36. Hymn  
37. Married  
38. Blue dye  
40. Wetting again  
44. Skilled workman  
47. Wireless telegraphy
- DOWN**  
1. Floating platform  
2. Opera solo  
3. Viewed  
4. Coat supports  
5. Father  
6. Casper  
7. Limits  
8. God of love  
9. Groove  
10. Tree  
11. Pig pen  
16. Crowded conditions  
18. Errand boy  
20. Girl's nickname

**Answer to Puzzle**

S	V	E	S	E	N	E	D	S	O	N	O
S	I	L	K	E	T	E	D	S	I	L	K
O	I	D	O	N	N	E	S	I	L	K	E
O	N	I	R	E	L	M	E	R			
S	E	L	E	N	I	O	N	I	O	D	E
S	E	L	E	N	I	O	N	I	O	D	E
S	E	L	E	N	I	O	N	I	O	D	E
S	E	L	E	N	I	O	N	I	O	D	E
S	E	L	E	N	I	O	N	I	O	D	E
S	E	L	E	N	I	O	N	I	O	D	E
S	E	L	E	N	I	O	N	I	O	D	E
S	E	L	E	N	I	O	N	I	O	D	E

great concern for those who were in the first stages of spiritual growth. He admonished against offending "one of these little ones." But it is also part of God's plan that we should reach the time of spiritual maturity, a time when faith is strong and sure, when we are informed, resourceful and energetic Christians.

We cannot expect to reach such a state of spiritual maturity all at once. The great danger of many Christians, who point to the time of their conversion, is that they will think they have already arrived when they have only begun. Someone has remarked that some Christians are like wasps—they are bigger when they are born than at any other time. No person can reach the point where his life counts in the Kingdom of God without first being

### Bishop A. J. Moore To Preside At Re-dedication

Bishop Arthur J. Moore will preside over the annual re-dedication service at Young Harris Sharp Memorial Methodist Church today at 8 p. m.

A part of Young Harris College's orientation program, this service is designed for the re-dedication to the purpose of Christian higher education on the part of the administrative personnel, the faculty and the 500 students enrolled for this school year.

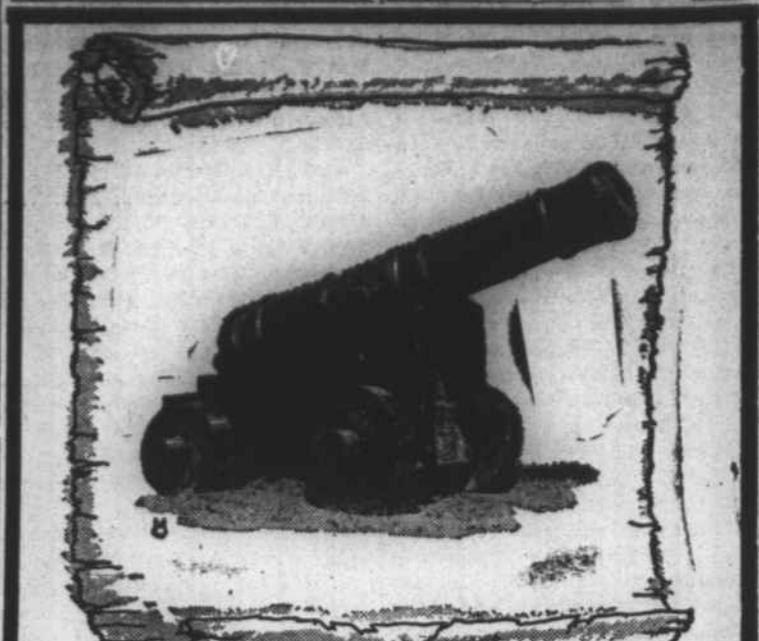
The college administrative staff will be represented on the program by Dr. Charis R. Clegg, president;



I AM FOR A CLEAN AND EFFICIENT COUNTY GOVERNMENT. YOUR VOTE AND INFLUENCE WILL BE APPRECIATED.

**Hoyt Walker**  
DEMOCRATIC CANDIDATE FOR  
**Coroner**

the faculty by Dean Robert F. Duckworth of Atlanta. This re-dedication service will be the prelude to the college's Religious Emphasis Week which will be held October 5 through 12.



### STEADFAST IN DEFENSE...

Many a long year has passed since this old cannon faithfully defended the ramparts. We show it to symbolize our basic function, which is to do everything possible to defend the possessions of every client. Help in planning insurance to meet all emergencies, low-cost protection and helpful counseling . . . are all part of our service.

**CITIZENS BANK and TRUST CO.**  
**INSURANCE DEPARTMENT**  
Vernon 7-2141  
Murphy Andrews

**Guaranteed**

**To Kill Rats and Mice!**

Ask for Uncle Joe's Wonder Rat and Mouse Killer at your favorite grocery, hardware or feed store.

**ATHENS INSECTICIDE CO.**  
Athens, Tennessee



### Announcing

Your New Headquarters for Grassland Machinery and Information

We're mighty proud to announce that we have been appointed Authorized Dealer for the New Holland line of grassland farming machinery.

As you know, New Holland is the recognized leader in grassland farming . . . ever since it brought out the world's first automatic pick-up baler in 1940. The same know-how that produces

famous New Holland balers goes into all the machines New Holland makes— forage harvesters, rakes, mowers and other grassland equipment.

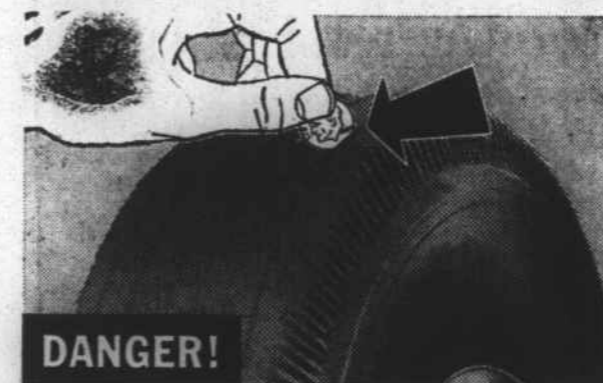
With machinery like New Holland . . . plus all that profitable grassland farming how-to information New Holland is noted for . . . we'll be able to serve you better than ever as your new Grassland Farming Headquarters in this area.

**WOOD TRACTOR & IMPLEMENT COMPANY**  
At Airport Andrews, N. C. Phone 509-J

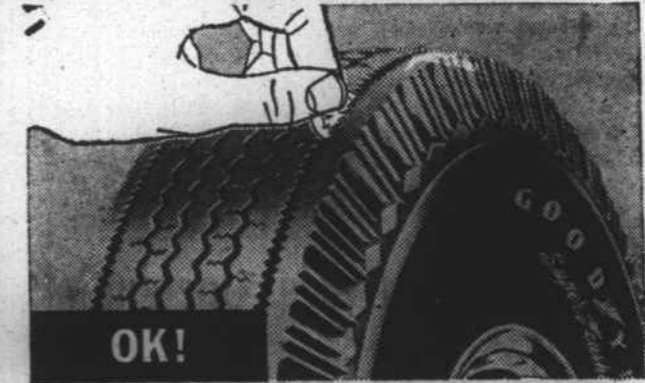
authorized NEW HOLLAND dealer



### CAN YOUR TIRES PASS THIS DIME TEST? Try it now!



Hold dime with date down—insert in tire groove. If you can see date, tire is unsafe.



Look at the difference. Dime shows plenty of tread for safer traction.

If you can see the date on the dime, you need

**3-T SUPER-CUSHION**  
by **GOODYEAR**  
**\$12.95**

6.70x15 blackwall Tube-type plus tax and recappable tire

Replace dangerous smoothies with 3-T Super-Cushions. Built with Goodyear's exclusive 3-T Cord Body for superior strength. It's BIG value all the way!

6.00x16 blackwall tube-type plus tax and recappable tire **\$11.95**

7.10x15 blackwall tube-type plus tax and recappable tire **\$14.85**



7.60x15 blackwall tube-type plus tax and recappable tire **\$16.25**

NO DOWN PAYMENT WHEN YOU TRADE IN YOUR OLD TIRES!

**ALLISON-DUNCAN TIRE COMPANY**  
Peachtree Street Dial VE 7-2821 Murphy, N. C.