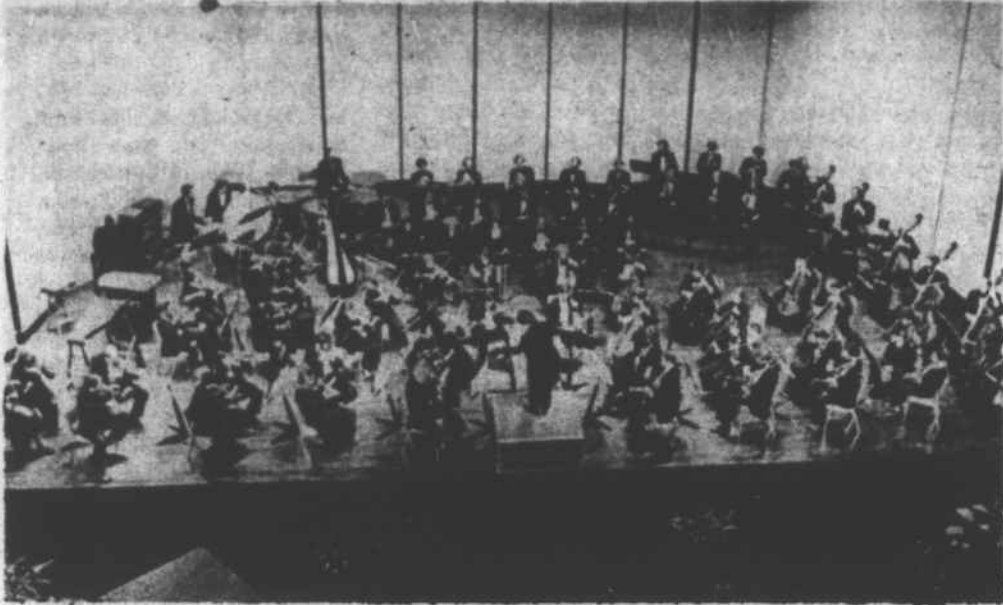


# Pembroke State University

BY GENE WARREN



N.C. Symphony to perform at Pembroke State University's Performing Arts Center Friday.

## SANTA CLAUS TO BE HELPING AT THREE PSU CONCERTS

Santa Claus, with his white whiskers and red suit, will be helping to promote three special Pembroke State University musical events this week.

He will be distributing programs to PSU's annual Christmas concert at 8 p.m. Thursday night and to two performances of the North Carolina Symphony Friday. The first performance of the symphony Friday will be at 11:45 a.m., free to Robeson County School children. The evening performance Friday starts at 8 p.m. Tickets to it will be \$7.50 per person. PSU students with I.D. cards will be admitted for \$5.

The symphony's appearance at Pembroke is co-sponsored by the Lumberton Rotary Club and Pembroke State University.

The symphony will perform music of Haydn, Schuman, Williams, Tchaikovsky, and Anderson. Music will include "Symphony No. 86 in D Major," "Concerto in A Minor for Violinello," "Star Wars Medley," "Nutcracker suite," and Christmas carols.

Both the Christmas concert and the symphony's performance will be in the beautiful 1,700-seat PSU Performing Arts Center.

Combining their talents in the PSU Christmas concert will be the University's "Singers and Swingers," the PSU band, and the PSU choir.

## PSU "INFORMER" NOW BEING MAILED OUT

The December issue of Pembroke State University "Informer" has been printed and is being mailed to alumni and friends of the University.

Instead of an alumni newspaper only, PSU is designing this for everyone who is a friend of the University. This issue is being sponsored by Eugene Locklear, owner of University Sportswear near Pembroke and a member of the PSU Chancellor's Club.

Everyone is asked to mail in nominations to two PSU awards: "The Distinguished Service Award" and "The Outstanding Alumnus Award." Both of these coveted awards will be presented at Pembroke State's homecoming banquet Feb. 13. Nominations with supporting data should be mailed to: Walter Oxendine, PSU Director of Alumni Affairs, Pembroke State University, Pembroke, N.C. 28372.

The new PSU "Informer" is being printed by the Carolina Indian Voice, the third straight year the Indian Voice has printed such a PSU newspaper.

## CHANCELLOR'S RADIO SHOW HAS NEW TIME

For the last couple of years WAGR radio in Lumberton has been carrying a special five-minute radio program, "From The Chancellor's Office." On it, Chancellor Paul Glens interviews mostly faculty, students, and staff members of the University. The program's time has been moved from Saturday to Sunday at 9:45 a.m. Future guests will be: PSU men's basketball coach Billy Lee on Sunday, Dec. 6, and "Miss Pembroke State Uni-

versity," Francy Adler of Fayetteville, on Sunday, Dec. 13.

## "A DOLL'S HOUSE" TO BE PRESENTED AT PSU DEC. 10-12

"A Doll's House," described as a suspenseful drama from the 1800's involving blackmailing, will be presented at PSU Thursday, Friday, and Saturday (Dec. 10-12) at 8 p.m. in the Performing Arts Center. A special matinee performance will be given Friday, Dec. 11, at 1:30 p.m.

The play is directed by Enoch Morris, director of the PSU Performing Arts Center.

The title evolves from the fact that the wife in the story is treated like a child by her husband, and she asserts her rights. A sort of advance to women's lib. Tickets are \$3 for general admission and \$2 for season ticket holders. PSU students with I.D. cards are admitted free.

## PLANS FOR REGIONAL SCIENCE FAIR ANNOUNCED

Dr. Jose D'Arruda, professor of physics at PSU who coordinated the very successful Southeastern Regional Science Fair last spring, is planning a second one March 26 in the English E. Jones Health and Physical Education Center. Grades 7-12 are eligible to participate.

Specific information regarding rules, divisions, and awards will be distributed in early January. Top prize will again be a full one-year tuition scholarship to PSU.

For more information about the Science Fair, contact Dr. D'Arruda at 521-4214, Ext. 247. Last year 40 schools and 150 exhibitors participated in a fair which attracted 1,000 people.

## PSU'S BILLE LEE REMAINS THE ETERNAL OPTIMIST

A year ago Pembroke State's men's basketball team, under Coach Billy Lee, won its first four games, including sweeping the College of Charleston Tournament. They went on to capture the Carolinas Conference Tournament, the first time the Braves had won that event.

After losing star players Melvin Reid and jumping jack Leslie Lilly at graduation, PSU has had to regroup and put freshmen in key roles. The result was that the Braves lost their first three this year. But Lee is an undaunted individual. "As soon as these freshmen gain experience, we'll be good," he said. His team jelled in last year's tourney--and Lee is shooting for the same this season.

## ANGELINE DEMERY RECIPIENT OF \$100 ASSISTANTSHIP

Angeline Demery, daughter of Mr. and Mrs. Willard Demery of Rt. 4, Lumberton, is the recipient of a \$100 assistantship from PSU's Lyceum Series program. Under the direction of Felicia Turner, cultural events coordinator, she has assisted in all components of promoting the PSU cultural events. Angeline attended Pembroke Senior High School.

## Dr. Corbin L. Cooper guest speaker



Dr. Corbin L. Cooper, director of the Department of Cooperative Ministries and Seminary Extension, Baptist State Convention of North Carolina will be the guest speaker at the Annual Benefit Dinner for the Robeson County Church

and Community Center. The dinner will be held December 5 at 6 p.m. at Lumberton Senior High School. Tickets will be \$5.00 per person and may be purchased from any member of the board of directors of that organization or writing to 210 E. 15th Street, Lumberton, NC 28358, 738-5204. Tickets will also be available at the door.

Cooper has served North Carolina as trustee of the Baptist Homes for the Aged, a member of the Christian Life Committee, and State Alumni President of Southeastern Baptist Theological Seminary. He was born in Eden, NC. He is a graduate of Mars Hill College, Mars Hill, NC; Wake Forest University, Winston-Salem, NC; and Southeastern Baptist Theological Seminary, Wake Forest, NC. He received the doctor of education degree in adult education and sociology from North Carolina State University, Raleigh.

He was honored by Shaw University, Raleigh, in 1974 with the Doctor of Divinity degree. Also, the General Baptist State Convention of North Carolina presented him with the 1975 Christian Brotherhood award. Mrs. Cooper is the former Joann Ashley of Whiteville. They have two sons, John and Nelson.

Cooper has served North Carolina as trustee of the Baptist Homes for the Aged, a member of the Christian Life Committee, and State Alumni President of Southeastern Baptist Theological Seminary. He was born in Eden, NC. He is a graduate of Mars Hill College, Mars Hill, NC; Wake Forest University, Winston-Salem, NC; and Southeastern Baptist Theological Seminary, Wake Forest, NC. He received the doctor of education degree in adult education and sociology from North Carolina State University, Raleigh.

He was honored by Shaw University, Raleigh, in 1974 with the Doctor of Divinity degree. Also, the General Baptist State Convention of North Carolina presented him with the 1975 Christian Brotherhood award. Mrs. Cooper is the former Joann Ashley of Whiteville. They have two sons, John and Nelson.

People who are always tired should take a vacation.

## Public Hearing Scheduled

Lumberton-The county commissioners have scheduled a public hearing for Monday, December 7, to receive input from the public concerning the proposed redistricting plan for Robeson County.

The commissioners decided to hold the public hearing to conform with the mandate of the 1965 Voting Rights Act. Robeson County is one of 39 counties in North Carolina subject to the federal law.

## ABOUT YOUR HOME

Save the heels of bread, dry in the oven, then roll with a rolling pin. Keep in plastic bag in freezer. This makes great bread crumbs.

Wipe off stainless steel counters, sink and stove top with a cloth dampened in club soda and they will gleam without streaks.

By April Rhodes  
Did you know you can save the broth of turkey, chicken and roast by pouring into cube trays and freezing them. Remove broth cubes and store in plastic bags and freeze. Use, when needed, for gravies, sauces and soups.



# Service & Quality

Better than It Has To Be!

Dear Consumer: Piggly Wiggly wants to help you in lowering your expenditure for food, so in addition to our Super Specials, plus week-end Specials, we will be offering you extra special buys with our COUPON FEATURES. Just clip these coupons and head for Piggly Wiggly, where Quality & Service is Better Than It Has To Be!

<p>COUPON</p> <p><b>Scott Towels</b></p> <p>JUMBO ROLL</p> <p><b>19¢</b></p>	<p>COUPON</p> <p><b>Lipton Tea Bags</b></p> <p>100 CT</p> <p><b>1.39</b></p>	
<p>PIGGLY WIGGLY</p> <p><b>SUPER SPECIAL!</b></p> <p>Shortening</p> <p>3 LB CAN</p> <p><b>1.29</b></p>	<p>PIGGLY WIGGLY</p> <p><b>SUPER SPECIAL!</b></p> <p>ORANGE JUICE</p> <p>MINUTE MAID</p> <p><b>1.09</b></p>	<p>PIGGLY WIGGLY</p> <p><b>SUPER SPECIAL!</b></p> <p>Margarine</p> <p><b>2.29</b></p>

<p>PIGGLY WIGGLY</p> <p>PLAIN OR SELF RISING</p> <p><b>FLOUR</b></p> <p>5 LBS</p> <p><b>79¢</b></p>	<p>PIGGLY WIGGLY</p> <p><b>WISK</b></p> <p>DETERGENT</p> <p>64 OZ</p> <p><b>2.89</b></p>
<p>PIGGLY WIGGLY</p> <p><b>KETCHUP</b></p> <p>32 OZ</p> <p><b>88¢</b></p>	<p>PIGGLY WIGGLY</p> <p><b>BISCUITS</b></p> <p>4 PACK</p> <p><b>79¢</b></p>

<p>PIGGLY WIGGLY</p> <p>ALUMINUM</p> <p>FOIL 12 x 25</p> <p><b>2/1.09</b></p>	<p>PIGGLY WIGGLY</p> <p>FRESH BREAD</p> <p>SPRINKLES 24 OZ</p> <p><b>1.09</b></p>
<p>PIGGLY WIGGLY</p> <p>WAX 20 OZ</p> <p><b>2.29</b></p>	<p>PIGGLY WIGGLY</p> <p>ICE CREAM</p> <p>1/2 GALLON</p> <p><b>69¢</b></p>

<p>PIGGLY WIGGLY</p> <p>SHRIMP MULTI-PACK</p> <p>FINGERS 12 OZ</p> <p><b>1.09</b></p>	<p>PIGGLY WIGGLY</p> <p>SOUSHVITS 12 PK</p> <p><b>1.09</b></p>
<p>PIGGLY WIGGLY</p> <p>WAX 20 OZ</p> <p><b>85¢</b></p>	<p>PIGGLY WIGGLY</p> <p>ORZO 20 OZ</p> <p><b>1.45</b></p>

<p>PIGGLY WIGGLY</p> <p>CRACKERS</p> <p>SNACK CRACKERS 99¢</p>	<p>PIGGLY WIGGLY</p> <p>BREAD</p> <p>1 LB 2/99¢</p>
--	---

<p><b>CRISCO</b></p> <p>3 LBS</p> <p><b>1.98</b></p>	<p><b>DUNCAN HINES</b></p> <p>CAKE MIX</p> <p>18 OZ</p> <p><b>89¢</b></p>	<p><b>TIDE</b></p> <p>171 OZ</p> <p><b>6.29</b></p>	<p><b>Pork Loins</b></p> <p>9 to 11 CHOPS</p> <p><b>1.18</b></p>
<p><b>COBLE MILK</b></p> <p><b>\$1.99</b></p> <p>GALLON</p>	<p><b>MR. CLEAN</b></p> <p>22 OZ</p> <p><b>1.99</b></p>	<p><b>LUZIANNE</b></p> <p>COFFEE</p> <p>1 LB BAG</p> <p><b>1.69</b></p>	<p><b>U.S.D.A. Choice Meats</b></p> <p>SIRLOIN STEAK</p> <p><b>2.18</b></p>
<p><b>ORANGE JUICE</b></p> <p>1/2 GAL</p> <p><b>1.49</b></p>	<p><b>KRAFT PARKAY</b></p> <p>1 LB</p> <p><b>2/1.00</b></p>	<p><b>PET RITZ</b></p> <p>PIE SHELLS</p> <p>2'S 2/1.09</p> <p>DEEP DISH 2'S 79¢</p> <p>3'S 1.89</p>	<p><b>FREEZER SPECIALS!</b></p> <p>Whole Beef Loins 1.98</p> <p>Whole Sirloin Tips 1.98</p> <p>Whole Bottom Rounds 1.98</p>
<p><b>Puffs Facials</b></p> <p>120 CT</p> <p><b>59¢</b></p>	<p><b>Charmin</b></p> <p>BATHROOM TISSUE</p> <p>6 PACK</p> <p><b>1.69</b></p>	<p><b>GRAPE JELLY</b></p> <p>2 LBS</p> <p><b>1.29</b></p>	<p><b>SUNSET GOLD</b></p> <p>ICE MILK</p> <p>1/2 GALLON</p> <p><b>1.09</b></p>
<p><b>FOLGERS</b></p> <p>COFFEE</p> <p>1 LB</p> <p><b>1.99</b></p>	<p><b>MAXWELL HOUSE</b></p> <p>COFFEE</p> <p>3.49</p>	<p><b>CLAYTON</b></p> <p>CONDITIONER 11.1.88</p> <p>SHAMPOO 11.1.88</p> <p>HAIR WAX 1.88</p> <p>AQUA FRESH 1.78</p>	<p><b>PIGGLY WIGGLY WORLD OF PRODUCE</b></p> <p>the Freshest Buys in Town!</p> <p>FARM FRESH</p> <p><b>CABBAGE</b></p> <p><b>12¢</b></p>

PIGGLY WIGGLY KEEPS AMERICA SHOPPING WITH EVERYDAY LOW PRICES!  
SAVE GREENBAX STAMPS FROM PIGGLY WIGGLY  
PEMBROKE MAXTON ST PAULS PIGGLY WIGGLY