

# CAROLINA INDIAN VOICE

Published each Thursday in Pembroke, N.C.

"Building Communicative Bridges In A Tri-Racial Setting"

VOLUME 32 NUMBER 32

THURSDAY, AUGUST 19, 2004

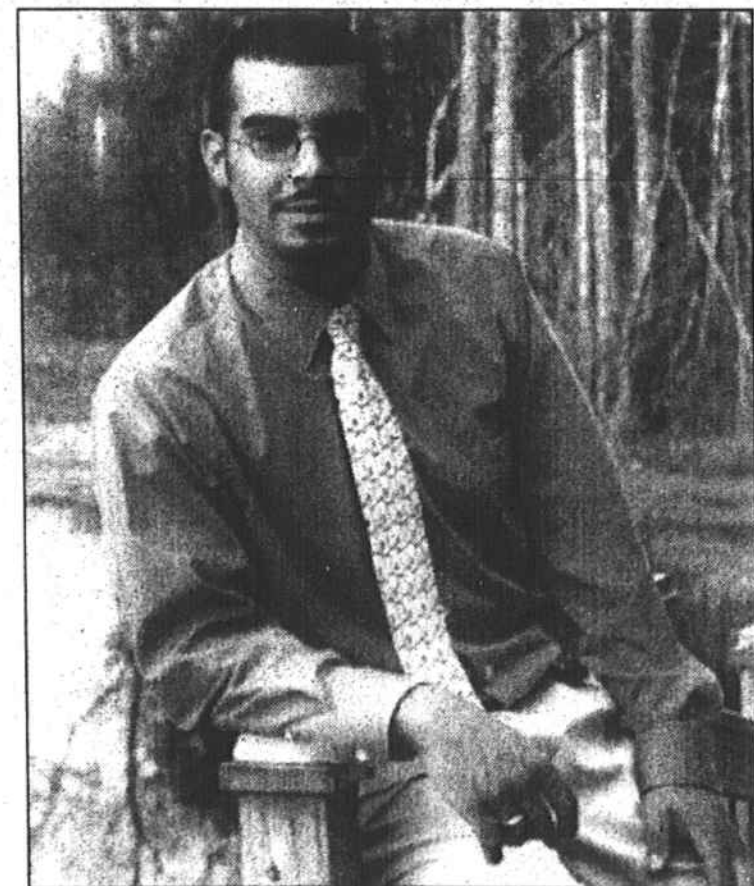
25¢



## LRDA's WIA staff recognized for outstanding service

The 25th National Conference of Native American Grantees was held recently in Milwaukee, Wisconsin. LRDA's WIA Staff was recognized for twenty-five years of service to the employment and training program. Pictured left to right: Patricia Lowery, Fiscal Office; Zona Locklear, Career Counselor; Darrell Waldron, Chairman of the Conference; Shelby Rogers, Eligibility Specialist; Brenda Jacobs, Career Counselor; William E. Locklear, WIA Director.

## A Message from Mr. Lumbee, Brent Tyler



As another Lumbee Homecoming has once again successfully passed, a new term for the Lumbee Ambassadors has begun. I am Brent Mitchell Tyler, your reigning Mr. Lumbee 2004-2005. I am proud to represent the Lumbee Nation as an ambassador for the largest Tribe in the eastern United States. We are blessed to be a self-sustained Tribe and rich in our unique culture. As your ambassador, I will make myself readily available to you. While my journey as Mr. Lumbee has rapidly begun, I will dedicate my year to the awareness of the Lumbee culture. This experience will be a learning process for me as cultural awareness is an ongoing process that never ends. When asked, "If I had to choose a community service platform, what would it be and why?", I choose Promoting Volunteerism in American Indian Youth. As a Firefighter and Rescue member, I believe that giving back to your community is an essential and vital role, we should instill in each of our lives. Caring for others around you will promote life and longevity, and as American Indians - Our Creator has shown compassion for one another created a spirit of peace. I look forward to working with each of you throughout my reign to succeed in all we strive to do. Through this we can better serve each other and be beneficial to the welfare of the Lumbee Tribe. As we are approaching the reality of Federal Recognition, I pray to our Creator to grant access to full recognition. As the Chairman of the Lumbee Tribe stated, "We have been treated as second class Indians too long." Federal Recognition will bring over 77 million dollars to the Lumbee Tribe for the purpose of healthcare and education. My father, Mitchell Tyler, was an advocate for education. He worked tirelessly on behalf of children as a career educator and Superintendent of Hoke County Schools. My mother, Carol Tyler, serves in capacity of healthcare management, and through them the importance of healthcare and education has been instilled in my life. I thank them for being the role models they have been and through what has been taught by them I will strongly support the fight for recognition. Once again I would like to thank each of you for your continued support of the Lumbee Ambassadors and want you to know that I am here to serve you, my Lumbee people, in every capacity. I pray that as a tribe, we will continue to prosper with the gift of prominence in hopes for a bright and positive future.

Subscribe to  
the Carolina Indian Voice  
Call: 910-521-2826  
PO Box 1075  
Pembroke, NC 28372

## Free poetry competition

Poets, listen up! The Bards of Burbank are hosting their annual free poetry competition, and everyone is welcome. There are 50 prizes in all totaling almost \$5,000.00, and the grand prize is a whopping \$1,000.00. "Even if you have written only one poem," says Poetry Director Dr. John Cusack, "you are welcome to enter. Indeed, if you have never entered a poetry contest before, this is your big chance. I promise you I will find exciting new talent among Pembroke area poets. The deadline for entering is September 8. Your poem may be written on any subject, using any style, and must be 21 lines or less. Send one poem only to: Bards of Burbank, 2219 W Olive Ave., # 250, Burbank, California 91506. Or enter your poem online at [www.bardsofburbank.com](http://www.bardsofburbank.com).

## Cardiologist joins SRMC Cath Lab

George P. Bekic, D.O., has joined the medical staff of Southeastern Regional Medical Center. He is associated with Dr. Stephen Royal and Southeastern Cardiology in the practice of invasive cardiology in the cardiac cath lab at SRMC. "I was especially interested in joining Dr. Royal's practice because I believe in the hospital's mission," Dr. Bekic said. "It was also a great opportunity to get in on the Southeastern Heart Center." A native of Erie, Pa., Dr. Bekic has recently completed a fellowship in cardiology at the Geisinger Medical Center in Danville, Pa. He is a graduate of Nova Southeastern University College of Osteopathic Medicine in Ft. Lauderdale, Fla., and completed residency training in 2001 at the Western Pennsylvania Hospital in Pittsburgh, Pa., which is affiliated with Temple University. His professional interests are in diagnosing and treating in coronary artery disease and acute coronary syndrome. He is skilled in interventional cardiology procedures, including cardiac catheterization and echocardiography. His special interests in trans-esophageal echocardiography. Dr. Bekic is single and makes his home in Lumberton.

## In the Armed Forces

July 29, 2004 (FHTNC)—Marine Corps Pfc. Christopher W. Revels, grandson of Sherry Mangum of Lumberton, N.C., recently completed the Electrical Equipment Repair Specialist Course. During the classroom instruction and practical application at Marine Corps Engineer School, Marine Corps Base, Camp Lejeune, N.C., Revels received training on the operation, maintenance and repair of field power generating equipment. Revels also studied electrical theory, operating principles of alternating and direct current generators and control devices. Revels is a 2003 graduate of Lumberton Senior High School of Lumberton, N.C.

## Rachel Malcolm attends School of Government

Rachel C. Malcolm, a sophomore at Jack Britt High School in Fayetteville, was a fellow at the James A. Harrell, Jr. School of Government held July 25-28 at N.C. State University. She is the daughter of David & Beth Malcolm of Fayetteville and is the granddaughter of J.T. & Vera Locklear Malcolm of Pembroke.

## Agenda for American Indian Health and Human Resource Forum

Thursday, September 2, Southeastern Agricultural Center, Lumberton

Morning  
8:00 - 8:45 Registration and Continental Breakfast  
8:45 - 9:00 Welcome and Opening Remarks  
Gregory Richardson, Executive Director - North Carolina Commission of Indian Affairs Jan Lowery, Chairman - NC American Indian Health Committee and Commission Member for the NC DHHS Paul Brooks, Chairman - NC Commission of Indian Affairs 9:00 - 9:20 Community Partnering with Academia TBA - UNC Pembroke 9:20 - 10:05 The State's Public Plan and Chronic Disease in North Carolina  
Leah Devlin, NC State Health Director - Overview of the NC State Public Health Plan Marcus Plescia, Section Chief of NC Chronic Disease Prevention & Control - Chronic Disease Among American Indians  
10:05 - 10:45 Mental Health Reform: Its Impact on American Indian Communities  
Michael Moseley, Director - Division of Mental Health, NC DHHS, Development Disabilities and Substance Abuse  
10:45 - 11:00 Break - Exhibits  
11:00 - 11:50 Strengthening Tribal Communities thru Capacity Building and Economic Development  
James Hardin, Director - American Indian Economic Development initiative.TBA  
- American Indian Tribes - Self Determination Act  
12:00 - 1:15 Lunch - Buffet  
TBA - Invocation Afternoon 1:15 - 1:45 pm Engaging Tribal Communities to Improve Healthcare  
TBA - Diabetes in Indian Populations and Prevention Mike Cummings, Executive Director - Burnt Swamp Association 1:45 - 2:45 Models for Partnering with American Indian Communities  
TBA - Columbus County Healthy Carolinians  
Mary Black, Executive Director - Southeastern Regional Healthy Carolinians  
Partnership Ronny Bell, Associate Professor of Epidemiology WFU - Community Heart Quest Program  
2:45 - 3:00 pm Break - Exhibits  
3:00 - 4:00 pm Partnering with State/Local Health Human Service Agencies for Services & Funding Barbara Pullen Smith, Director - NC Office of Minority Health & Health Disparities Bill Smith, Health Director - Robeson County Health Department  
TBA - Local Department of Social Services  
4:00 - 4:30 Closing Remarks  
Jan Lowery, Moderator  
Greg Richardson, James Hardin, Rev. Mike Cummings, Mary Black, Bill Smith, Julia Phipps

## Amy L. Locklear joins Husch & Eppenberger's Corporate Law Practice

Husch & Eppenberger, LLC proudly welcomes Amy L. Locklear as an Associate Attorney in the firm's Corporate Practice Group. Ms. Locklear concentrates her practice in the areas of general corporate law and securities law. She is a member of the American Bar Association, The Missouri Bar, the Bar Association of Metropolitan St. Louis, and the Native American Bar Association. Ms. Locklear earned her law degree from Washington University School of Law in 2002. In 1999 she earned her Master of Social Work from the George Warren Brown School of Social Work, Washington University, with a concentration in Social and Economic Development for American Indians. Ms. Locklear graduated with a B.A. in communications from the University of North Carolina at Chapel Hill in 1997. While pursuing her undergraduate degree, she was a member of the Order of the Golden Fleece Honorary Society. Ms. Locklear is the founding member of Alpha Pi Omega, the first sorority in the nation created for American Indian Women. She is a registered member of the Lumbee Tribe of North Carolina. Husch's Corporate Practice Group engages in general corporate representation, finance, mergers and acquisitions, real estate syndications and tax-exempt financing and securities representation of publicly-held corporations, venture capital, underwriters and investment companies. Husch is a nationally ranked law firm with more than 300 attorneys in eight cities across the Midwest and Mid-South. For over eighty years, Husch has provided innovative, sophisticated representation to local, regional, national, and international businesses; financial institutions; charitable and governmental organizations; and individuals. Husch's primary practice areas are general business litigation, product liability, land use and development, tax and estate planning, and corporate and financial transactions. The firm also offers specialized legal expertise in labor and employment, construction, environmental and regulatory, health law, insolvency, intellectual property and technology, franchise law, international law, e-business, and benefits litigation. In August 2004, The American Lawyer named Husch as the 169th largest firm in the nation, based on 2003 gross revenues. In November 2003, The National Law Journal ranked Husch as the 134th largest firm in terms of number of lawyers. These rankings are the result of the firm's commitment to growth and expansion in the Midwest and Mid-South, and its service to litigation and transactional clients nationwide. Husch has offices in St. Louis, Kansas City, Jefferson City, and Springfield, Missouri; Peoria, Illinois; and Downtown Memphis, East Memphis, Chattanooga, and Nashville, Tennessee. Ms. Locklear practices in Husch & Eppenberger's St. Louis office, located at The Plaza in Clayton Office Tower, 190 Carondelet Plaza Suite 600 (phone: 314.480.1500). The firm's website is [www.husch.com](http://www.husch.com).

## Retired physician volunteers to provide end-of-life care

Dr. Annette Burke is no stranger to the medical community in Robeson County. In 1982, she began her practice of pediatrics in Lumberton and was an active member of the Southeastern Regional Medical Center medical staff for about 20 years. Now she is taking on a new role in her retirement: she is a volunteer physician helping terminally ill patients of Hospice of Robeson. She says that by visiting patients in their home, she is carrying on a tradition begun by Dr. Douglas Clark, the late surgeon and former medical director of Hospice of Robeson. Dr. Jamsheed Khan, an internal medicine physician associated with Lumberton Medical Clinic, is the current medical director of the hospice program. Dr. Burke sees similarities between the models of care for dying patients and developing children. "As pediatricians, we are trained to prevent many illnesses by vaccinating children. We treat children when they are sick, and we promote healthy lifestyles and age-appropriate development." She added that hospice care is based on a comparable model. "When cure is no longer possible, we prevent foreseeable problems, we treat symptoms as they arise and we promote patient and family-centered care." The Hospice of Robeson team, which includes health professionals and community volunteers, has welcomed Dr. Burke to their family of care. "Both Dr. Burke and Dr. Khan are diligent in pursuing symptom management and promoting comfort care," said Miriam Edward, executive director of Hospice of Robeson. "I know they will work well with area physicians regarding the care and comfort of their patients. Hospice of Robeson was established in 1985 to offer care and support for terminally ill patients and their families. Its services are available without regard to age, sex, race, religion, national origin, handicap or ability to pay if the individual meets the admission criteria. Hospice staff and volunteers are available to speak to church and civic groups. For more information, call the Hospice office at 671-5655.