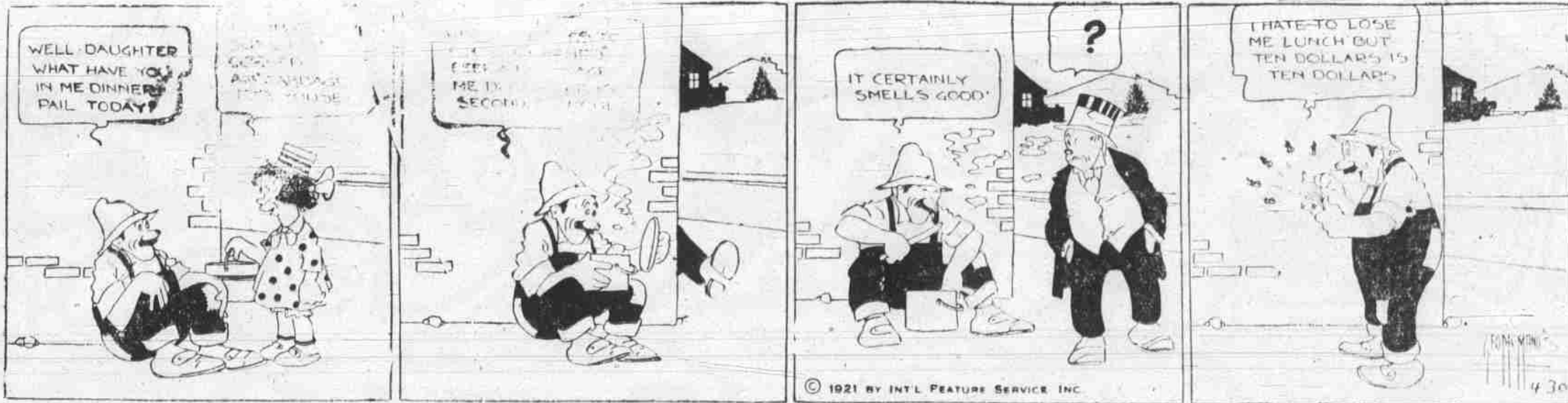


BRINGING UP FATHER

Registered U. S. Patent Office

BY GEORGE McMANUS



© 1921 BY INT'L FEATURE SERVICE INC.

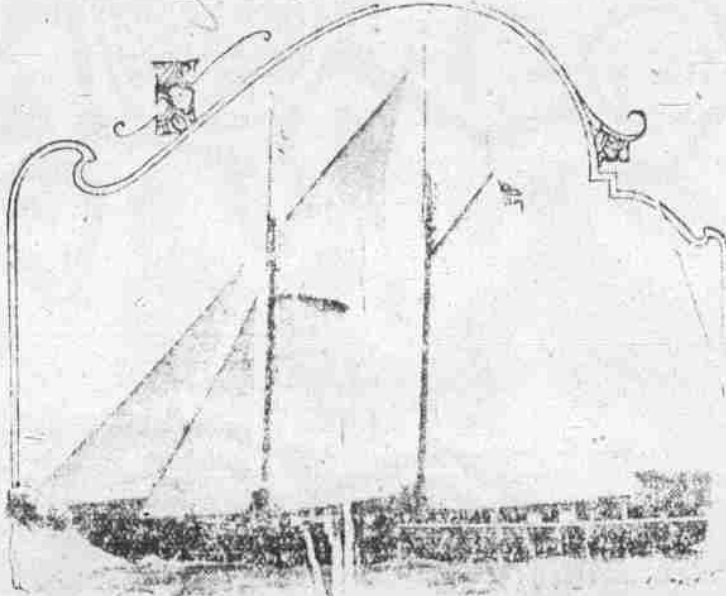
How About Repainting

That old car and putting on a new top? The very highest class work guaranteed.

Rose Garage

Farboro Street Phone 106

Challenger Mayflower Has Trial Trip.



The fishing schooner Mayflower, Boston's entry in the international fishing schooner race next Fall, leaving Boston for her maiden sail to Boston Light and return. The Mayflower, designed by W. Stirling Burgess, is expected to win the trophy first last year by the Gloucester schooner, Esperanza.

GENERAL ALLEN ON RHINE COMMISSION

America's Representative Though Unofficial Wields Powerful Influence

Coblenz, April 29.—American representative on the Inter-Allied Rhine Commission, General Allen, is reported to have been very influential in the commission's deliberations. The commission is expected to report to the Council of Ambassadors the next day.

pleation of the new customs regime in the occupied zone, decided upon at the London conference on March 3 was discussed. The British and the French points of view were very far apart. After a few days' discussion, General Allen's opinion was asked.

The discussion had been somewhat acrimonious and General Allen, while not endorsing unreservedly either point of view, proposed a medium solution. To the French, who were advocating the sternest measures, he said: "You can't get both steak and milk from the same cow."

To the British he demonstrated that better results might be obtained by adopting another course and after a few hours' discussion upon details of execution, the commission drafted its report which was sent to the Council of Ambassadors the next day.

The American's viewpoint upon a momentous question of quality was adopted.

It is the consensus of opinion among delegates to the Rhine Commission that Allen's participation in the deliberations of the commission has had a restraining influence upon extremists in both French and German deliberation.

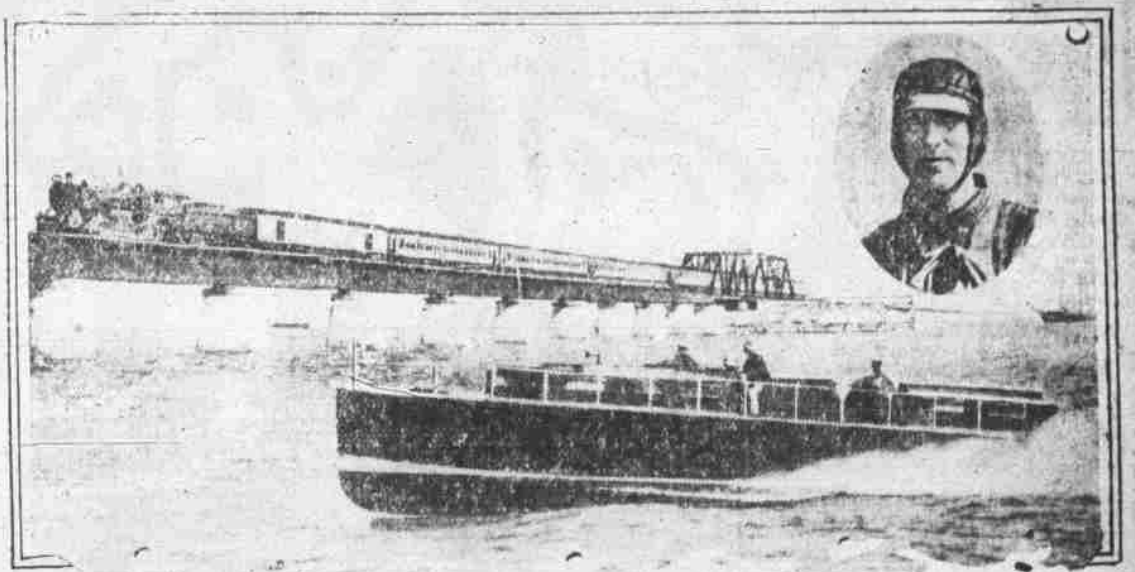
Friends and enemies alike write him profusely and their letters run the whole gamut from ecstatic adulation to trenchant vituperation. This morning he received a dozen letters and as many packages from sky and person, an American. All were registered. The American must have known that his class of mail gets first attention by the marshal's staff.

Nearly every mail brings a letter from some professor in America inviting the marshal to have himself lugged on to go to the place of fire and brimstone. By every mail some one sends him an ode or a song written in his honor.

Mothers write him informing him they have named the baby boy in the world after him, and American fathers send word that they would have taken a good drink in his honor on some anniversary or other had not the United States proscribed.

Authors send him their books and inventors forward descriptions of wonderful new engines of destruction

MOTOR BOAT IN RACE FROM FLORIDA WITH A. C. L. TRAIN.



The speedboat 'Gur II', which is racing the Atlantic Coast Line Flyer, Havana Special, from Miami, Florida, to New York. At the end of the first 100 miles the motor boat was fifteen minutes ahead of the train. On his arrival at Seaboard, N. C., Garfield A. Wood, shown in the inset, who is driving the vessel, said he was a half day ahead of his rivals.

FOCH LITERALLY FLOODED BY MAIL

French Generalissimo Worries Because He Cannot Digest All Letters

Paris, April 29.—Marshal Foch says that one of his greatest regrets is that he has not time enough to properly digest the big mail he receives. Like most men in high positions, he has a large number of letters which he is obliged to read hurriedly, and he says he is always sorry that he cannot read them more carefully.

The American Railway Express Company

will sell at Public Auction at Rocky Mount, N. C. on Thursday, May 19th, 1921.

A large number of packages which have remained on hand 30 days or longer at Offices in this vicinity.

Plan Campaign Against Southern Pine Beetle

Washington, April 29.—Control of the southern pine beetle is entirely practicable, the Department of Agriculture says in a statement calling attention to more merchantable timber was killed in the southern pine belt as a result of its operations in the last thirty years than died from all other causes combined.

One remedy suggested is that all trees that are damaged in summer and fall be cut and utilized for lumber or fuel, care being exercised that the bark of the main trunk be burned to insure control of the beetle.

Heat Your Bungalow, Cottage, or Flat with Hot Water

Cellar not necessary in any small house without disturbing present heating arrangements, until ready to use with the IDEAL-Arcola Radiator-Boiler. The Arcola is placed in living room, parlor, or kitchen and fired as a stove. It sends its excess heat by hot water system to American Radiators in adjoining rooms. The simplest, most durable, most economical heating plant ever devised for small buildings. Don't delay to find out all about it.

Ethridge-Lanhan Co. 147 So. Washington St. Phone 1218 Rocky Mount, N. C.

CONSTIPATION

And Sour Stomach Caused This Lady Much Suffering. Black-Draught Relieved.

Meadorville, Ky.—Mrs. Pearl Patrick, of this place, writes: "I was very constipated. I had sour stomach and was so uncomfortable. I went to the doctor. He gave me some pills. They weakened me and seemed to tear up my digestion. They would gripe me and afterwards it seemed I was more constipated than before. I heard of Black-Draught and decided to try it. I found it just what I needed. It was an easy laxative, and not bad to swallow. My digestion soon improved. I got well of the sour stomach, my bowels soon seemed normal, no more griping, and I would take a dose now and then, and was in good shape. I cannot say too much for Black-Draught for it is the finest laxative one can use."

Theford's Black-Draught has for many years been found of great value in the treatment of stomach, liver and bowel troubles. Easy to take, gentle and reliable in its action, leaving no bad after-effects. It has won the praise of thousands of people who have used it.

SERVICE STATION Temme SPRINGS FOR ALL CARS Temme Spring Corporation CHICAGO, ILL.

Make it Snappy

Snappy thinks can be made by only those who know how. A dispenser of drinks at our fountain has to prove his ability to make them snappy.

ICE CREAM SERVED IN EVERY FORM. Sunday Orders Delivered. Phone 494. Fresh Candy Every Day.

The Palace of Sweets

"The Prettiest Place in Town." Rocky Mount North Carolina

UNIQUE WATCHES FOR WOMEN

We make a specialty of showing watches of small and unique design for women, to wear on wrist or bracelet or in the handbag. They are good little timekeepers and are very novel and attractive. Also many other jewelry novelties.

GEO. L. PARKER JEWELRY CO. Rocky Mount N. C.



INTEGRITY WE INDORSE THE IDEA OF INTEGRITY AND QUALITY ADVANCED BY OUR TAILORS AT FASHION PARK. TODAY, CLOTHES MUST GIVE SERVICE FIRST AND AFTER THAT A SUBSTANTIAL STYLE SHOULD BE CONSIDERED. BE SURE YOU SECURE VALUE BY BEING SECURE IN THE CHOICE OF A CLOTHIER.

The FASHION PARK TUROLE A SOFT, WONDERFUL STYLE OF COAT, WHICH ADJUSTS ITSELF TO ANY MOVE YOU MAKE. EXTREME, BUT IN SPLENDID TASTE, AND CAPABLE OF RETAINING ITS SHAPENESS EVEN THOUGH FLEXIBLY TAILORED.

CUSTOM SERVICE WITHOUT THE ANNOYANCE OF A TRY-ON. READY-TO-PUT-ON. TAILORED AT FASHION PARK ALWAYS PRICED TO WARRANT VALUE

Rosenbloom-Levy Company