

Young Herd Bull Needs Good Care

TO THE SCORES of farmers in North Carolina who have recently added a herd of beef cattle to their agricultural enterprises, L. I. Case, Extension animal husbandman of N. C. State College, sends a message urging care of the herd bull, especially if the animal is young.

"Young bulls should be well fed and cared for in order to grow out properly," he says. "A

good ration is equal parts of corn, crushed oats, and wheat bran, and all the legume hay the animal will eat. If legume hay is not available, add about one-half pound of a protein supplement with the grain mixture. Where wheat bran is too high in price, double the amount of oats in the ration.

"The total amount of grain to be fed should vary with the condition of the bull, but in no case should it be necessary to feed more than one pound to each 100 pounds live weight of the animal. Small amounts of good sweet silage may be fed to the bull, but large quantities may prove detri-

mental." Case also recommends that the young bull have access to salt and pure water at all times, and a mineral mixture of equal parts of steamed bone meal, ground limestone, and salt should be kept where he can help himself.

The beef type bull should not be put into service until he is at least one year old. The first year he may be used on not over 10 or 12 cows, one service to the cow. The bull should have access to a well fenced lot or pasture where he can take exercise. An open shed or shelter of some kind should be available. In no case to run with unbred females.

The sheet should be the length of the mattress, plus twice the thickness of the mattress a total of 10 inches, plus a six inch tuck in at the head and foot a total of 12 inches, plus 8 inches for hems and 5 inches for shrinkage. Thus a mattress 76 inches in length would require a sheet 108 inches long.

Christmas Seals Stamp Album Value Of 1908 Have

Believe it or not, Christmas seals of the issue of 1908 have a value of \$5 apiece, according to the stamp catalogue of J. H. Armfield, assistant postmaster at Greensboro. This price is a rather nifty return upon the little gummed pieces of attractively printed paper originally used on impress-

ing campaign against the white plague. And for the seal of 1911, Service has issued a pamphlet entitled "THE CLEAN AND COMFORTABLE BED." It is Extension Miscellaneous Pamphlet No. 44, and the publication is available free upon request by name and number to the Agricultural Editor, N. C. State College, Raleigh.

Seals of the 1910 issue are listed at \$3 each, while for other years the range is from 2 cents up to \$1.50. Manner of perforation and the character of the gumming result in price ranges of from 10 cents to \$1 in 1918 and from 75 cents to \$5 in 1918. Most of the price ranges per issue are from 10 to 30 cents, however.

The first Christmas seals listed are for 1907, believed to have been the initial issue as only \$4,000 worth of the seals were sold. The total sales jumped to \$135,000 for 1908. In 1916 the sales passed the million dollar mark, and in 1917 the total was \$1,750,000. In 1918 sales more than doubled, with a total of \$3,873,000. In 1939 total sales aggregated \$5,550,000.

The number of stamp collectors a score of years ago was not as great as at present and only a comparatively small number recognized the value of Christmas seals in connection with the stamp hobby.

Household Hint
If you are buying paint sets for a small child, be sure to get the kind of paint that will wash out of the child's clothing.

DO YOU KNOW?

We, in the United States, have 6 per cent of the world's area and 7 per cent of its population.

We operate 60 per cent of the telephone and telegraph facilities.

We have two-thirds of civilization's banking resources and its gold.

We have a purchasing power greater than that of 500,000,000 Europeans or of 1,000,000,000 Asiatics.

We have the highest wage scale, the shortest working hours and the greatest percentage of home ownership on earth.

We produce 70 per cent of the world's oil; 60 per cent of its wheat and cotton; 50 percent of its copper and iron, and 40 per cent of its lead and coal.

We consume 48 per cent of the world's coffee; 21 per cent of its sugar.

We burn 36 per cent of its coal and 69 per cent of its petroleum. We use 53 per cent of its tin; 56 per cent of its rubber; 42 per cent of its iron; 47 per cent of its copper and 72 per cent of its silk.

Recovery from tuberculosis depends on early diagnosis. Christmas Seal funds finance the Early Diagnosis Campaign held each year by the Alameda Tuberculosis Association.

Tuberculosis killed one person every eight and a half minutes last year in this country. Christmas Seal money is used to stop this needless loss of life.

Household Hint
When adding fruit or berries to frozen mixtures, see that the fruit is well crushed, mashed, or put thru a coarse sieve or food chopper. Large pieces of fruit freeze in the mixture and will not be palatable. Do not add the fruit until a mixture starts to freeze.

Household Hint
For the tea hour: Lightly butter round crackers, top each with a marshmallow, make indentations in the top of each marshmallow and fill with a little jam, jelly, or preserved fruit. Bake until the marshmallows are well puffed and the crackers brown. Serve promptly.

Harnett Increase Large For Decade

Harnett County ranked 22nd among counties in the State in the increase of population from 1930 to 1940, according to preliminary data released by the United States Census Bureau. S. H. Hobbs, Jr., of Chapel Hill, a member of the editorial board of the University of North Carolina News Letter, worked out a table showing the increase of population of the 100 counties, with comparisons for 1920-30.

The percentage of population increase for this county, according to the table, was 16.7 per cent.

Harnett's population as of 1940 was listed at 44,231, with 37,911 in 1930. The percent of increase 1920-'30, the figures show, 33.9.

District census officials announced the population of the county as of April 1, 1940, to be 44,231 and in 1930 as 37,911. However District Supervisor J. H. Barrington of Lumberton stated the figures released at that time were subject to correction. In 1930 there were 3,939 farms in the county; on January 1, 1937, there were 4,240; and on April 1, 1940 there were 4,457.

BURDEN OF TOMORROW
Never I believe in all life's ways Should burden bear so deep The future wrath woe and struggle Meet us face to face Only of God's power, we only bear The burden of the hour. During the year of 1937 I remember Franklin Delano Roosevelt saying: On his campaign: "This is God's country, let us pray and try to keep it that way."

—James Powe.

Employee: "Yessir, and they told me if I could last that long with you it was good enough reference for them."

YOU'RE TELLING ME!

By WILLIAM MITT Central Press Writer

THE MODERN big whale weighs 150 metric tons or nearly four times as much as the biggest dinosaur of prehistoric times. Goah, our own con isn't such a slouch, after all, is it?

New York is indeed the city in which fame is fleeting. Already, we hear, along Broadway they're asking, "What world's fair?"

German newspapers urge populations of conquered countries to enjoy the "new order" of things. It stems the Nazi slogan has become: "Smile, darn ya, smilie!"

We just saw a newspaper picture of the empress of Japan.

and a Japanese field marshal at a Tokio gathering. He, significantly, was doing all the talking.

A Japanese leader suggests his country seize Antarctica. They could have a lot of fun bombing ice bergs—they can't fire back.

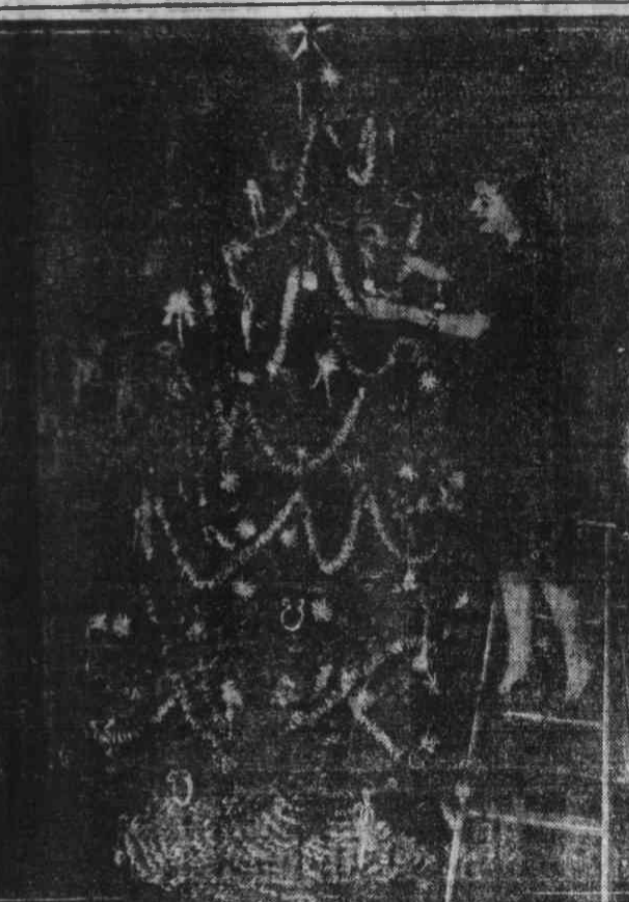
Fifteen thousand dollars has just been paid for a first edition copy of "Alice in Wonderland." That ought to start a frenzy of typewriter borrowing.

Italian Fifth Columnists in Greece might be surprised to learn that it was the Greeks who invented the original Trojan Horse.

Scientifically Constructed Black Walnut Cracker, \$8.50 prepaid. Money-back guarantee. Clarke Nuts Company, Harrisburg, Pa. Nov 25 Dec 2-9

The loss of European markets ports of American food products to \$15,279,000 in September as compared with \$28,693,000 in the same month a year ago.

America Trims The Christmas Tree



The glitter and sparkle of American Christmas trees will depend mostly on American-made ornaments this year, and designers have produced an array of novelties. The tree pictured is brilliant with ornaments that are all made in this country from "Cellophane" cellulose film, in a veritable rainbow of colors.

Red expanding bells, hanging from the upper branches, are cut in many facets that catch the light. When the tree is dismantled, they may be folded flat, similar to tissue bells. Garlands of the film come in blue, green and red, some with tinsel. Pompons and spiral tinsel are made of transparent drinking straw.

Figures of angels, clowns and Santas on the tree, may be created with the tinsel, which are available in assorted colors. The heads are marshmallows with features of colored Scotch Tape. Santa has a cotton beard and the angel wears a tinsel halo and spreads wings of silver cardboard. Her arms are a row of tiny square mints, enclosed in transparent wrapping.

State College Issues New Bedding Pamphlet

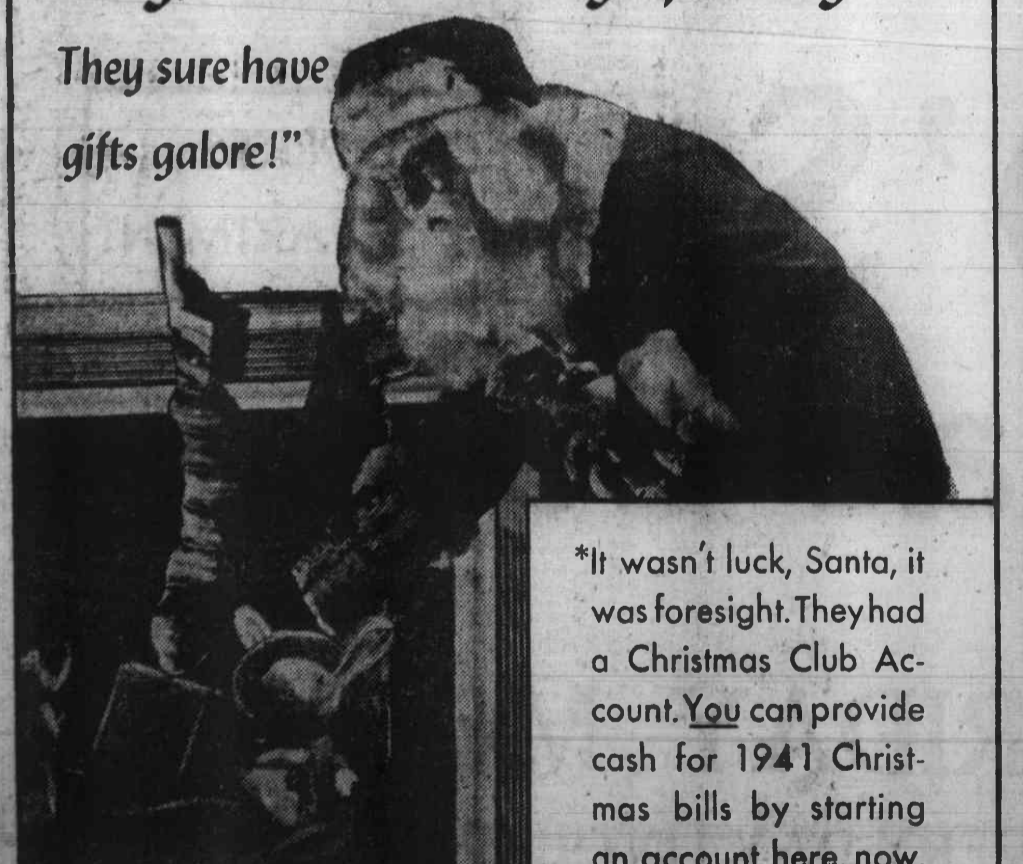
Realizing that a clean, comfortable bed is a great aid to restful sleep, the State College Extension Service has issued a pamphlet entitled "THE CLEAN AND COMFORTABLE BED." It is Extension Miscellaneous Pamphlet No. 44, and the publication is available free upon request by name and number to the Agricultural Editor, N. C. State College, Raleigh.

Care of mattresses, pillows, blankets, and comforts is stressed, and since these bedding materials are used for a long period of time, it is recommended that they be kept clean by protectors that can be laundered easily. Another point emphasized is the sized of the sheets.

"Nothing is more unpleasant than bedding that is too short or too narrow," Miss Gordon declares. "Short sheets are uncomfortable since they do not protect the blankets and mattress. Also, they wear out more rapidly because the sleeper is always jerking them."

The publication recommends that the bottom sheet be long enough to allow for a good tuck in at the head and foot, so that the sheet will be smooth. The top sheet should allow for a good tuck in at the foot and there should be about 18 inches to turn back over the blankets to keep them from coming in contact with the face, neck, shoulders and arms.

"My, what a lucky* family . . . They sure have gifts galore!"



*It wasn't luck, Santa, it was foresight. They had a Christmas Club Account. You can provide cash for 1941 Christmas bills by starting an account here, now.

DEPOSIT WEEKLY	RECEIVE IN 14 WEEKS
\$.25	\$ 12.50
.50	25.00
1.00	50.00
2.00	100.00
3.00	150.00
5.00	250.00

Choose one of these plans

Mechanics and Farmers Bank
Durham, N. C. Raleigh, N. C.
C. C. Spaulding, Pres.

"LET'S DINE OUT TODAY"

Give your family and friends a treat and bring them here to dine. They'll like the delicious home cooked foods.

We have a "Variety For Every Palate" and our food is prepared just the way you like it. For the best in choice and service, let us be your hosts.

Times Inn
801 Fayette St. "In The Heart of Haiti" Phone J-6221

Learn Beauty Culture
THE DeSHAZOR WAY
NEW CLASS NOW FORMING

Dormitory for Students Who Wish to live in Employment Guaranteed to Graduates

For Information Write
DeSHAZOR BEAUTY COLLEGE
Approved By N. C. State Board of Cosmetic Art
809 Fayetteville St. Durham, N. C.

THE POCKETBOOK OF KNOWLEDGE

41 STATES PROVIDE RAW MATERIALS FOR A HEAVY BOMBER — IT TAKES 12 TO 18 MONTHS TO BUILD AIRPLANES OF THIS TYPE

PLASTIC FOOTBALL HELMETS MADE FROM A WOOD DERIVATIVE ARE A NEW RESEARCH PRODUCT — THEY ARE HALF A POUND LIGHTER THAN THE OLD STYLE

VANISHING AMERICAN? NO MORE — THE U.S. INDIAN POPULATION IS GRADUALLY INCREASING. LAST YEAR IT INCREASED FROM 312,947 TO 351,878 — A GAIN OF 3,931

1926 OPERATING COSTS U.S. AUTOMOBILE OPERATING COSTS HAVE DECREASED 50 PER CENT SINCE 1926

OIL V

THE U.S. ENTERS ITS DEFENSE PROGRAM WITH TWO-THIRDS OF THE WORLD'S OIL REFINING CAPACITY AND THE GREATEST RESERVES IN HISTORY

There's nothing like SOUP to make you feel cozy inside

says Dorothy Greig
OF all the pleasant foods in the world, there are few that give such comforting glow as hot savory soup. It makes you feel "all cozy inside," as a friend of mine expresses it. And this is true whether you eat a thick, hearty soup or a



Chicken and Cream of Mushroom Soup wins compliments for any hostess. A little at a time, stirring constantly. This keeps the soup mixture smooth. Fill an empty soup can with cold water and stir this into the soup mixture slowly. Heat to the boiling point and serve. Serves 4-6.

Sometimes when you want to serve soup as the main course in a meal, for lunch maybe or for supper, try this deeply satisfying soup:

Cream of Mushroom and Pea Soup
1 can condensed cream of mushroom soup
1 can condensed pea soup
1 can milk (using soup can for measure)
1 can water

Combine the soups. Then add water and milk and heat, but do not boil. Serves 5-7.

And now here is a gay soup that combines two famous favorites:

Cream of Tomato and Chicken Soup
1 can condensed chicken soup
1 can condensed tomato soup
1 can milk (using soup can for measure)

Combine the soups. Add the milk and heat, but do not boil. Serves 4-6.