

ECONOMIC HIGHLIGHTS THAT AFFECT THE DINNER PAIL

Happenings That Affect The Dinner Pail, Dividend Checks and Tax Bills of Every Individual, National and International Problems Inseparable from Local Welfare.

IT IS OBVIOUS that the purpose of British strategy now is to eliminate Italy as a major belligerent in the war. That thought unquestionably underlay the recent British naval invasion of the Adriatic Sea—a body of water, which, on the basis of fighting ships and manpower, Italy should be able to control with ease, England rapidly liquidating Italian

influence in Africa.

There seems to be little doubt that Mussolini is on the down grade and that the magnificent Fascist empire he envisioned has small chance of being realized. Duce has but two alternatives, both of them unpleasant from his point of view—he must either surrender to England, or ask that Hitler save him. The first alternative is extremely unlikely—Germany could not permit it without risking a tremendous loss of prestige. The second alternative means German domination of Italy. The Italian people, going by the judge-

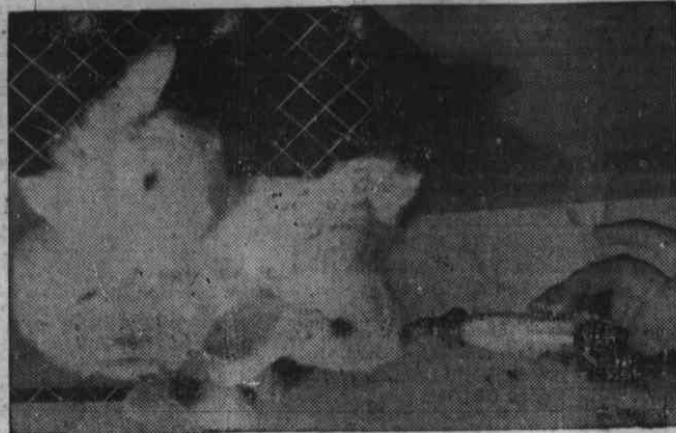
ment of the best observers, will not like that, but there will be little they can do about it. Unconfirmed reports say that Gaspari agents are already in Rome, and it is known that the German air force in conveying troops to Albania. It looks as if from now on Mussolini will be only Hitler's stooge.

If England does succeed in eliminating or greatly reducing Italian military and naval power, it will be a major victory. At the same time, it will bring it increased danger of German attempt at invading England. The British blockade is extremely effective, and the part of Europe the Fuhrer controls is running short of essential supplies. So, land could not have successfully

when Churchill said the other day in Commons that he expected an all-out German attack within two months, he was not talking through his hat. It is the logical move for the German air force has substantial reduced the intensity of its raids over Britain—also leads to the belief that Germany is preparing for a decisive blow against England.

England is superbly prepared to resist invasion, even though she is as yet inadequately prepared to carry the war to Germany on the Continent. Expert opinion generally holds that Hitler's great opportunity was directly after the evacuation of Dunkirk—that England could not have successfully

BUNNIES IDEAL BOTTLE BABIES



Chicago, Ill., Spl CFI Photo to this paper by Mueller.—These little bundles of white fur were orphaned when their mother was killed by a police dog, but they are thriving as bottle babies and will grow up to take part in the International Sportsmen's Show to be held here from February 22 to March 2.

Narrow Tobacco Plant Bed Is Recommended

Four good reasons for constructing a narrow tobacco plant bed are listed in pre-season recommendations to tobacco growers by Dr. Luther Shaw, plant pathologist of N. C. State College. He also suggests the importance of the proper location for the plant bed.

"If the tobacco bed is built narrow," Dr. Shaw said, "more resisted a determined invasion then. At the present time, they think, Britain has all she needs to keep an aggressor from her shores.

pants are produced per square yard; the danger of trampling on plants while weeding or pulling is avoided; the plants can be watered more easily and uniformly; and fourth, and most important, narrow beds can be equipped and treated for blue mold with satisfactory results than wide ones."

"The benzol or paradichlorobenzene fumigation methods are the best for controlling blue mold," Dr. Shaw declared. "Copper oxide spray is also satisfactory when applied in advance of the first appearance of the disease on the farm. The spray acts best as a preventative, while the fumigants will kill the mold after it has infected the plant bed."

The State College specialist al-

so suggests that the plant bed be located convenient to a source of water, and preferably near the house, because constant attention is required during the development of the young plants. "It is also desirable," he says, "to locate the beds so that they will be protected as much as possible from strong winds."

DOUBLED

L. G. Sheets of Chestnut Hill township in Ashe County says he has grazed twice as many cows on a pasture to which he applied superphosphate this spring as he did last year.

BANG'S

A plan for the official recognition of vaccination of calves as an aid in cooperative Bang's disease has been presented by the Federal Bureau of Animal Indus-

DOWN

A corn crop of lower quality than last year's unusually good harvest in indicated by inspections of early receipts at representative Belt markets, says the U. S. Department of Agriculture.

For each pound of fuel used in freight service, the railroads in 1940 hauled nine tons of freight and equipment one mile, the highest average on record.

Household Hint

If you like bacon dry and crumbly, try this method of cooking it. Lay strips in a cold frying pan. Heat slowly and pour off the fat as soon as it collects. Turn frequently with a fork. The bacon is done when it has a dull appearance and is dry.

WANTED AGENTS TO SELL

PAN-TONE LAXATIVE TONIC

Attractive Proposition To Distributors:

"Free with initial order for one dozen tonic: one year's subscription to The Carolina Times—with order of two dozen or more we will include one zipper Medicine Case.

We have thousands of Ministers now selling our line of medicine.

Pan American Distributing Co.
P. O. Box 1627 Charlotte, N. C.

MERRY XMAS
To Our Colored Friends
Full Line Of Santa Claus
Merchandise for the Whole Family
EAGLE STORES
(5c & 10c)
W. Trade St. Charlotte, N. C.

Join Our 80th
Series Today

4% and 5%

On Your Savings
WHY TAKE LESS?



A Thrift and Home Financing Institution

Mutual Building & Loan Association

F. L. MCCOY, CHAIRMAN OF BOARD

C. C. SPAULDING, President

R. L. McDOUGALD, Sec'y-Treas.

114 West Parrish Street PHONE J-3921

816 Fayetteville Street PHONE F-5921

Complete BUILDING SERVIE

- REMODELING
- NEW CONSTRUCTION
- ROOFING SERVICE
- BUILDING SUPPLIES

Estimates Gladly Furnished



For Painting, Papering and Decorating we use ROGERS PRODUCTS.

SMALL PROFIT, LARGE VOLUME
ALL WORK GUARANTEED

We Use Long-Life LOGAN-
LONG ASPHALT ROOFING
EXCLUSIVELY.

LONG LIFE
Logan-Long
ASPHALT SHINGLES

THIS COMPANY OPERATES ON A VOLUME BASIS
Home Modernization and Supply Co.

414 Fayetteville St. Durham, N. C. Phone J-4821

WINE AND DINE
At
Archie's Bar and Grill

601 East First Street
Specialties in

Breakfasts - Lunches - Dinners
Imported and Domestic Wines
½ Pints 15c - Pints 25c - Quarts 45c

ALEXANDER

FUNERAL HOME

323 SOUTH BREVARD STREET

Day Phone 8431

Night Phones 3-6027, 3-2472

BREVARD ST. BARBER SHOP

Shower Baths . . . 15c
N. G. EDWARDS, Prop.

231 South Brevard St. Charlotte, N. C.

DANCE

To One of our Coin Operated Phonographs — Latest Records. We Distribute the Wurlitzer Simple Phonograph — See Us For Special Rates for Your Party, Dance Or Other Socials.

B. L. BRYAN

Day Phone 8753

Night Phone 2-0130

Jacob's Radio Service

Honest Work — Reasonable Prices.

No Charge For Inspection

408 E. First Street

Telephone 9712

UNCLE SAM'S LOAN OFFICE

At

205 E. Trade St.

Phone 8276

Is The Place To CHRISTMAS SHOP

SPECIAL BARGAINS in

1. Suits\$5.95 and Up
2. Overcoats\$5.95 and Up
3. Jackets\$3.95 and Up
4. Watches\$5.95 and Up
5. Men's and Ladies' Rings\$5.95 and Up

● We lend money on all personal Property

DR. AUBREY L. PALMER

EYES EXAMINED!

GLASSES FITTED!

(Opposite Public Library) 317-A N. Tryon St.
We maintain a completely equipped office for the exclusive convenience of the Colored People.

Roscoe Griffin's Semi-Annual SHOE SALE

NOW GOING ON
HERE ARE SOME OUTSTANDING VALUES

Vitality Shoes

Including School Oxfords
These shoes need no introduction, they are nationally advertised footwear for women.

\$1.99 to \$4.95

ON RACK

On this rack are as good shoes as we have in our store. Short lines in blacks, browns, etc. in sueded, leathers and combinations—

\$1.99 Pair



ONE LOT MEN'S

Florsheim Shoes

Short lines and closeout styles in black and brown, very special during this sale, while they last at only—

\$5.95

Portage Shoes

FOR MEN

Popular styles popularly priced. They are to be had in the styles that young men are demanding, including blacks and browns. Regularly priced to \$7.50.

\$3.95 to \$5.95

ENTIRE STOCK OF FALL AND WINTER SHOES
GREATLY REDUCED

Roscoe Griffin Shoe Company

114 W. MAIN ST.

DURHAM, N. C.