

OUR LADY OF PERPETUAL HELP CHURCH HOLDS DEDICATION

CATHOLICS DEDICATE NEW NEGRO MISSION WITH CEREMONY

High Church Officials Attend Ceremonies

By C. A. IRVIN

The Mission of Our Lady of Perpetual Help was dedicated Thursday morning in a ceremony followed by celebration of Pontifical Mass and presided over by the Most Reverend Eugene J. McGuinness, bishop of the Catholic Diocese of Raleigh.

First of the three parts of the morning service was the laying of the cornerstone. Visiting priests followed the bishop in a professional to the stone, and the dedication services, in which the bishop blessed the mission, were held after the laying of the stone. Mass was said for the first

time in the new mission school chapel in the presence of an overflow crowd of citizens, who will attend church services in a Negro Catholic Church in Charlotte for the first time Sunday morning, June 22, when services will be held at 7 and 10 o'clock.

At the conclusion of the services, a luncheon was held at the mission for the visiting priests, who came from all over the region.

The new mission, to be conducted by the priests of the congregation of the Most Holy Redeemer, is a handsome, two-story brick structure. It includes a complete chapel finished in antique plaster with a silver gray tone, a living room, dining room, kitchen, breakfast room, reception room, and sacristy in the downstairs por-

tion, and living quarters for two fathers in charge upstairs.

There is ample room for more living quarters, to be used by other priests when the full program of school, church, and dormitory is carried out.

The architectural design of the Our Lady of Perpetual Help church, is Georgian.

It is a brick veneered building with all the requirements for institutional use.

The chapel is completely finished with knotty pine of a silver grey.

The plastering is of an antique finish blended with the woodwork.

The lighting affect has been carried out with fluorescent indirect lighting.

The altar has been polychromed in parts so as to bring out its enrichments ecclesiastically.

The stained glass in leaded design with the upper panel of the window on the right hand wall in sanctuary contains the eco-home painted figure of Christ.

A wrought iron shrine of Our Lady of Perpetual Help is on the left hand side wall in sanctuary, executed in poly-chrome color which contain votive lights.

The wood panel tester is of knotty pine-silver grey tone—with gold silk fringes.

The dorsal in back of the altar is executed of gold and cardinal red velour with gold silk fringes and gimp.

The wooden cross with ivory figure of Christ is hung from the tester with gold silk cord.

The candle stick is of wrought iron design and poly-chrome.

The sacristy is carried out in the same detail as in the main chapel including the vestment cabinet and the stained glass window.

The basement contains a recreation room with kitchenette and lavatory which will be for the purpose of congregational meetings.

The baptismal font is carried out in the wood as the main body with a stainless steel bowl and a special designed lifting device for the font cover, which is the wrought iron ornamental part made through the electric light fixture on the ceiling.

The glazed wood screen at rear separates the chapel from the narthex. The chapel is also air conditioned and heated with a forced hot air system.

Our Lady of Perpetual Help church is but one unit of a modern plant which when completed will consist of the present building a church, school, and convent, with playground facilities sufficient for all purposes.

The property consisting of a city block is bounded by Oaklawn Ave., Fairfield Street, Washington Ave., and Mulberry Street.

The legal details in connection with respect to the transfer of the property to Our Lady of Perpetual Help was handled by attorneys Bowser and Harris.

Farm Commodity Prices Are Soaring Cited By Council

Raleigh — Housewives of North Carolina are now paying from 6 to 143 per cent more for seasonal meats, fruits and vegetables and seafoods compared with prices prior to the outbreak of hostilities in September, 1939. A. B. Harless, marketing specialist of the State Department of Agriculture, reported today.

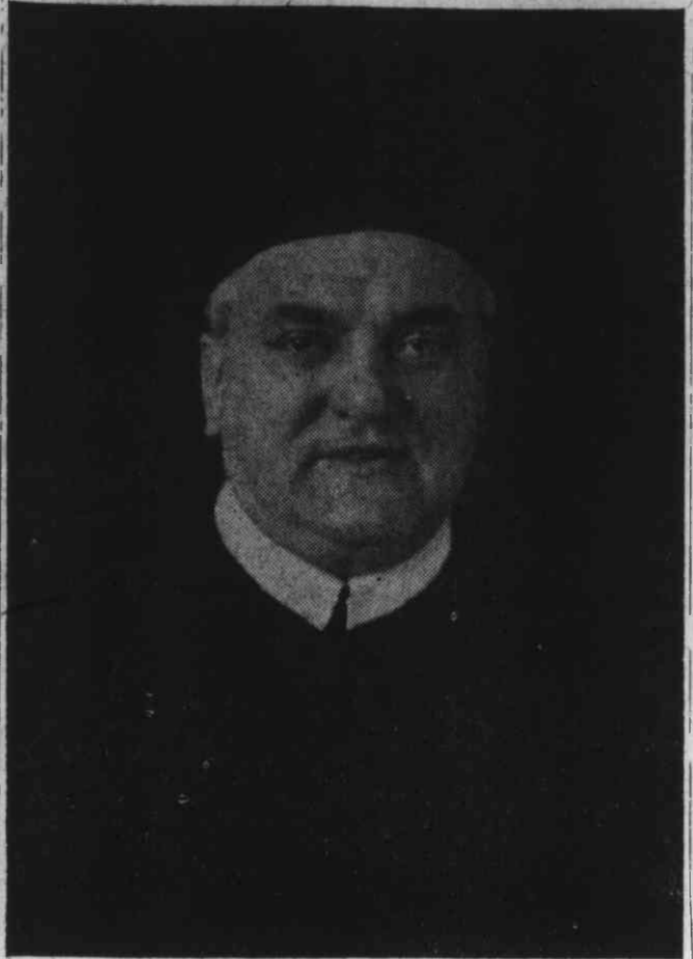
Enlarged consumer purchasing power, lower production yields as a result of the drought, plus Government financial support of certain commodities are the principal stimulating factors behind the price increase of most farm products," Harless said.

"While it has not been determined what share of the abnormal increase paid for farm products is going to the grower, it is a known fact that farmers in general are receiving financial benefits from sales of most live stock and perishable products."

Roosevelt appeal opens the USO drive to raise \$10,765,000.

"Father"

Reading downward, (1) Father Augustine J. Petranek, C. Ss. R., who has been in Charlotte more than a year working out plans for a mission for the city's Negro Catholics.



(2) The exterior of the edifice, which is a marvel of architectural beauty.



(3) and (4) interior views of the church showing the solemn beauty of this, Charlotte's only Negro Catholic church.



There are business men in every town whose success depends on this country needs new leadership. It is either a statement in favor of the income of agriculture or of revolution or an announcement that they do not understand what "parity" means.

Five of former Kaiser's sons follow Hitler; sixth a suicide.

Raleigh Resident Center Dedicated Thursday, June 26

Raleigh — Dedication of the Raleigh Resident Center and the holding of open house on all NYA projects in North Carolina, Thursday, June 26, will mark the celebration of the sixth anniversary of the establishment of the National Youth Administration by President Roosevelt on June 26, 1935. State NYA Administrator John A. Lang announced today.

The dedicatory program in Raleigh will have June Rose of Greenville, chairman of the state advisory committee, and Lang as speakers. Governor J. M. Broughton will bring greetings on behalf of the state. The program will be broadcast over Station WRAL in Raleigh at 11:05 o'clock p. m.

A radio broadcast will be presented at 1:30 o'clock p. m. over Station WPTF in Raleigh, June 26, at which time Mr. Lang will speak on the history and program of the National Youth Administration and review its participation in national defense.

The National Youth Administration is now operating 475 projects in North Carolina, including woodworking, welding and machine shops, sewing projects, resident centers for the physical rehabilitation of rejected selectees and other sub-par youths and to provide training for work in skilled defense industries, construction of community centers and school buildings, clerical assistance in public offices, home making, and other types of projects.

All projects now in operation throughout the state will be open for the inspection of visitors June 26 and everyone is invited to visit local NYA projects and view the work being done by the National Youth Administration North Carolina.

The National Youth Administration provides a two fold opportunity for needy young men. First is the opportunity for young people who are out of school and in need of jobs to work for wages on useful public projects and to acquire the background of experience needed for private employment. Second is the opportunity for young people who are students to work in schools and colleges and earn some of the money they need to enable them to continue their education.

During the year ending June 30, the National Youth Administration has provided part time jobs for approximately 25,000 out of school youths. Another 13,000 youths have been provided with jobs which enabled them to continue their education in the state's schools and colleges.

Through work experience on NYA projects and through related training in classrooms while employed by NYA, the National Youth Administration enables young people to coordinate work theories and practice and acquire a well rounded background.

As a national defense agency, the NYA is participating in the defense program through the training of skilled workmen for defense industries, the rehabilitation of rejected selectees to raise them to physical standards for military service, and the manufacture of gun racks, garments, desks and other office equipment for use by the army.

Alonzo G. Wright Employs 85 Regular Workers in Cleveland

Tuskegee, Ala. — James H. Robinson and W. Quinton Nunn, graduates of the Tuskegee Class of 1941, have joined the Wright Service Stations of Cleveland, Ohio.

Alonzo G. Wright, Negro owner and operator of seven gasoline service stations in Cleveland, employs more than 85 regular workers. He is said to employ the most highly educated non-technical, non-professional staff in the city of Cleveland.

The Virtue Of Intolerance

BY RUTH TAYLOR

There comes a time in the life of every nation when tolerance ceases to be a virtue, when it is more far sighted to become intolerant, when we must—to use the dictionary definition of intolerance—"be unwilling to bear or endure."

We have reached that stage today. We have seen what has happened to the nations who were too tolerant—too tolerant of the forces of evil who worked from within to tear down and destroy the good that countless generations had built by heavy labor and with great sacrifice.

We need to be intolerant—intolerant of the cruelties inflicted on helpless terrified people who because they dwell in the paths of peace and who cultivated their own lands, were mowed down by the relentless aggressors whose only desire was to reap where others had sown—to seize for themselves whatever they wished, things which they could have made for themselves had they bent half the pursuit of war to a peaceful attainment of prosperity.

We need to be intolerant—intolerant of treachery in our midst, of those subversive forces who try to disrupt our national unity, sabotaging not merely our industrial plants and our government institutions, but the moral of

the people as well. These are the same forces of "appeasement" that opened the gates of the continents overseas to the invader and betrayed a helpless people. Call the Trojan Horses—or Fifth Columnists or by whatever name you will—we have been tolerant with their reverted practice too long.

We need to be intolerant—intolerant of an attack upon any group because of race, creed, class or color. This country is based upon freedom or all and the right to think speak rite and worship as the individual conscience dictates but it does not include the right to try to keep this privilege from anyone else. We must not let our constitutional rights be used by any one group to destroy another which is entitled to the same rights—whether it be labor or industry—or a racial or religious inorty. Above all—we need to be intolerant of intolerance.

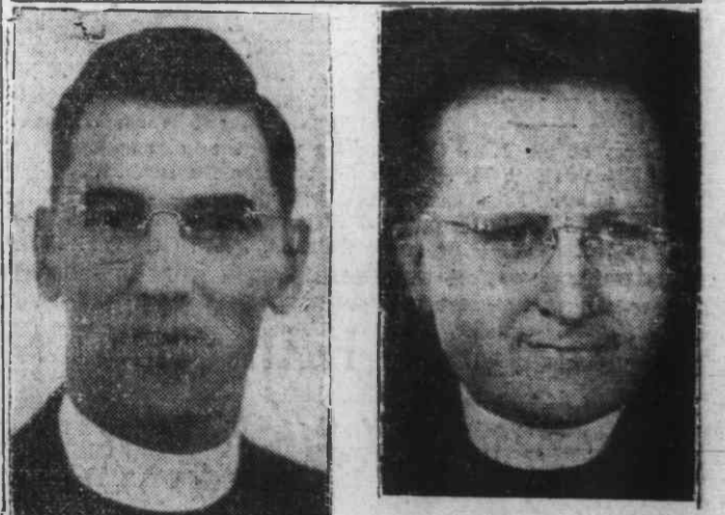
"Solomon, that wise king, summed it up thus: "These six things doth the Lord hate yea, seven are an abomination unto him, a proud look, a lying tongue, and hands that are innocent blood, a heart that deviseth wicked imaginations, feet that be swift in running to mischief, a false witness that speaketh lies, and he that soweth discord among brethren." Of these same things let us today be intolerant!

One hundred American flying-fortresses, delivered to Chinese aviators, would produce more peace-talk in Japan than the Japs have heard in years.

Friendly Cooperation

The photographs on this page were made possible through the friendly cooperation of R. Mufflin Hood Tile Co., Central Lumber Co., Sherwin-Williams Co., Renfrow Tile & Marble Co., Sears, Roebuck Co., R. S. Garmon Roofing Co., Ernest Ford Construction Co., Economy Electric and Supply Co., and Adolph Wohlpart, Architect.

Redemptorist Fathers



REV. JOHN RENEHAN, C. Ss. R.

REV. HUGH HAHN, C. Ss. R.

Redemptorist Fathers (pictured above) are traveling in the Trailer Chapel, "Our Lady of Perpetual Help." Pictured below—is an interior view of this (Trailer) Chapel showing the appropriate arrangement.

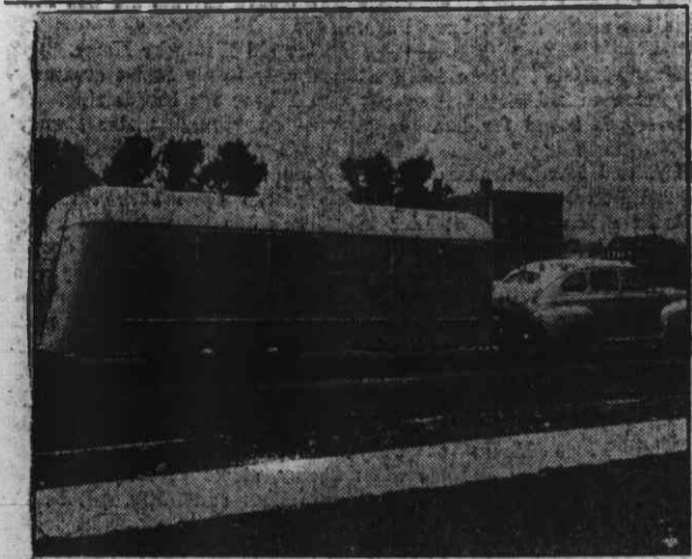


Prominent Members



Dr. and Mrs. S. C. Pyle, prominent members of Our Lady of Perpetual Help, Catholic Church, who have contributed much of their time and energy to the Catholic program in Charlotte. Mrs. Pyle sang a beautiful number at the opening of the church.

Chapel Car Spreads The Gospel



Pictured at top is Chapel Car of our Lady of Perpetual Help Church. Photo below—shows loud speaker system of the Chapel Car which broadcasts the Gospel effectively.

