

SAVE MORE

"SUPER RIGHT" FAMOUS QUALITY HEAVY CORN-FED

BEEF SALES

"SUPER-RIGHT" HEAVY CORN-FED BEEF

ROASTS

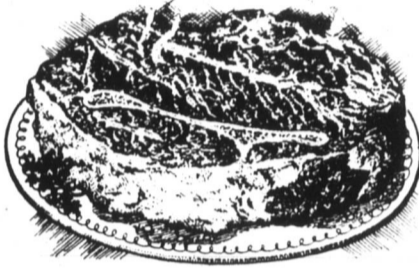


"SUPER-RIGHT" QUALITY, FRESHLY
GROUND BEEF Lb. **45c**
 "SUPER-RIGHT" LEAN, BONELESS
STEW BEEF Lb. **65c**



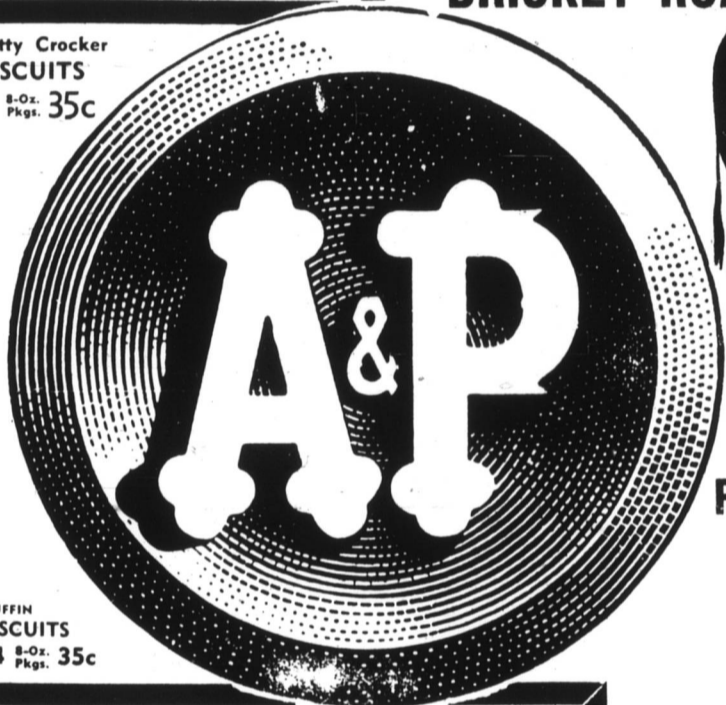
"SUPER-RIGHT" CORN-FED BEEF
RIB ROAST
 5th & 6th Ribs Lb. **69c** First 4 Ribs Lb. **79c**

• "SUPER-RIGHT" CORN-FED BEEF—BONELESS
CHUCK ROASTS Lb. **65c**
 • "SUPER-RIGHT" CORN-FED BEEF—BONELESS
SHOULDER ROAST Lb. **69c**
 • "SUPER-RIGHT" QUALITY BONELESS
BRISKET ROAST Lb. **65c**



BONE-IN
CHUCK ★ Lb. **45c**

Betty Crocker
BISCUITS
 4 8-Oz. Pkgs. **35c**



PUFFIN
BISCUITS
 4 8-Oz. Pkgs. **35c**



PRICES IN THIS
 AD ARE EFFECTIVE
 THRU SAT. MARCH 12th

Porterhouse
 OR
T-BONE ★ Lb.

"SUPER-RIGHT" HEAVY CORN-FED BEEF

STEAKS

SIRLOIN ★ PER Lb. **93c**

"Super-Right" heavy-corn fed beef is fully guaranteed to please your family in every way or your purchase price will be refunded in full. Bring your friends in this week, fill your freezers with "Super-Right" Quality Beef during A&P's Spring Stock Up Sale now in progress. We will cut your purchases to your satisfaction, wrap in regular market paper and mark the contents on each package free of charge. Come in this week... Place your order with the Market Manager. You may pick it up later.

• "SUPER-RIGHT" QUALITY HEAVY CORN-FED BEEF 85 TO 100 LB. AVG. **45c**
WHOLE BEEF ARM CHUCK Lb. **45c**
 • "SUPER-RIGHT" QUALITY HEAVY CORN-FED BEEF 25 TO 35 LB. AVG. **89c**
WHOLE BEEF SHORT LOIN Lb. **89c**
 • "SUPER-RIGHT" QUALITY HEAVY CORN-FED BEEF 45 TO 65 LB. AVG. **79c**
TRIMMED FULL BEEF LOIN Lb. **79c**
 • "SUPER-RIGHT" QUALITY HEAVY CORN-FED BEEF 325 TO 375 LB. AVG. **49c**
WHOLE SIDE OF BEEF Lb. **49c**
 "Super-Right" Heavy Corn-Fed
BEEF RIBS 25 to 35 Lb. Avg. PER Lb. **59c**
 • "SUPER-RIGHT" QUALITY HEAVY CORN-FED BEEF 20 TO 30 LB. AVG. **65c**
WHOLE BEEF SIRLOIN BUTT Lb. **65c**
 • "SUPER-RIGHT" QUALITY HEAVY CORN-FED BEEF 165 TO 190 LB. AVG. **43c**
WHOLE BEEF FOREQUARTER Lb. **43c**
 • "SUPER-RIGHT" QUALITY HEAVY CORN-FED BEEF 160 TO 185 LB. AVG. **57c**
WHOLE BEEF HINDQUARTER Lb. **57c**
 • "SUPER-RIGHT" QUALITY HEAVY CORN-FED BEEF 85 TO 100 LB. AVG. **57c**
TRIMMED BEEF ROUND Lb. **57c**

"SUPER-RIGHT" HEAVY CORN-FED BEEF
CUBED CHUCK STEAK Lb. **89c**
 "SUPER-RIGHT" HEAVY CORN-FED BEEF
CUBED ROUND STEAK Lb. **99c**

"SUPER-RIGHT" HEAVY CORN-FED BEEF STEAK
BONELESS TOP ROUND Lb. **89c**
 "SUPER-RIGHT" HEAVY CORN-FED BEEF STEAK
Boneless Bottom Round Lb. **83c**

"SUPER-RIGHT" HEAVY CORN-FED BEEF
BONELESS RIB STEAK Lb. **99c**
 "SUPER-RIGHT" HEAVY CORN-FED BEEF BONE-IN
SHOULDER ARM STEAK Lb. **69c**

"Super-Right" Corn-Fed Bone-In
CHUCK STEAK Lb. **55c**
 "Super-Right" Heavy Corn-Fed Steak
SIRLOIN TIP Lb. **99c**

• ANN PAGE PEACH, PINEAPPLE or APRICOT
PRESERVES BUY SEVERAL JARS **3 Lb. Jar 75c**
 • ANN PAGE RED BEANS OR RED
Kidney Beans 2-Lb. 9-Oz. Can **29c**
 • ANN PAGE VALUE PRICED! CONDENSED
TOMATO RICE SOUP 3 10½-Oz. Cans **35c**

Vigorous & Winey
BOKAR COFFEE
 1-Lb. Bag **77c**
 3-Lb. Bag **\$2.25**

• JANE PARKER VANILLA CREME ICED
SPANISH BAR CAKES
 1-LB. 3-OZ. CAKE **29c**
 • JANE PARKER—REG. SLICED
Raisin Bread 1-Lb. Loaf **23c**
 • Jane Parker Cinnamon, Sugared or
Golden Donuts 12-Ct. Pkg. **19c**
 • JANE PARKER BROWN N' SERVE
French Rolls 10-Oz. Pkg. **21c**
 • JANE PARKER—Ready to Serve
Pineapple Pies 1-Lb. 8-Oz. **39c**

• MARVEL BRAND—SPECIALLY PRICED
ICE MILK 2 ½-Gal. Cts. **75c**
 • A&P "OUR FINEST" FROZEN
POTATO MORSELS 2 Lb. Pkg. **33c**
 • PASTEURIZED PROCESSED CHED-D-BIT
CHEESE SPREAD AMERICAN OR PIMIENTO 2 Lb. Pkg. **79c**
 • "SUPER-RIGHT" QUALITY
CHILI WITH BEANS 2 15½-Oz. Cans **55c**

White House Instant
DRY MILK SOLIDS
 4-Lb. Pkg. **\$1.39**

OUR OWN BRAND HEARTY AND VIGOROUS
TEA BAGS **48** COUNT **43c**
 A&P BRAND FRUIT
COCKTAIL 2 1-Lb. 1-Oz. Cans **49c**
 PILLSBURY FLOUR Plain or Self-Rising 10 lb. bag **\$1.17**
 BIT-O-HONEY CANDY BAR 7½-oz. cans **27c**
 SWIFT PREM LUNCHEON MEAT 12-oz. cans **37c**
 METRECAL LIQUID DIET FOOD All Flavors 3 8-oz. cans **89c**
 BAB-O-CLEANSER 2 14-oz. cans **31c**
 FEM'S FEMININE NAPKINS 12-ct. pkg. **45c**
 STRIEMANN TOWN HOUSE CRACKERS 1-lb. pkg. **37c**
 DOLE Pineapple-Grapefruit DRINK 2 1-qt. 14-oz. cans **69c**
 DOLE PINEAPPLE TIDBITS 8-oz. can **19c**

LITTLE FRISKIES
CAT FOOD • FISH 1-Lb. Pkg. **27c** • FISH & LIVER CHICKEN 2-Lb. Pkg. **47c**
TOOTSIE ROLL MIDGEES 8-oz. pkg. **29c**
TOOTSIE ROLL HAND-PACK 22-ct. 6-oz. pkg. **20c**
TOOTSIE ROLL PARTY-PACK 40-ct. pkg. **39c**
CHICKEN RICE-A-RONI 8-oz. pkg. **37c**
BEEF RICE-A-RONI 8-oz. pkg. **37c**

COMET BRAND RICE
LONG GRAIN 12-Oz. Pkg. **19c** 2-Lb. Pkg. **47c** 3-Lb. Pkg. **67c**
SHORT GRAIN 12-Oz. Pkg. **18c** 2 Lb. Pkg. **43c**
GIANT GRAIN 1-Lb. 12 Oz. Pkg. **47c** Brown Rice 2 12-Oz. Pkgs. **39c**



VALUE PRICED! WESTERN GROWN "MOUTH SMACKING"
RED DELICIOUS APPLES

KIDS LOV'EM PER Lb. **19c**

3 Lb. Bag **JONATHAN APPLES**
 5 Lb. Bag **REGULAR WHITE POTATOES**
 5 Lb. Bag **ALL PURPOSE RUSSET POTATOES**
 12 Ct. Bag **JUICE FILLED LEMONS**
 PLAIN OR SELF-RISING **Gold Medal Flour** 5 Lb. Bag **61c**

3 BAGS OF YOUR CHOICE ★ **\$1.00** MIX OR MATCH SALE!

ALL FLAVORS—ROYAL
GELATINS
 4 3-Oz. Pkgs. **39c**

SCOTT SCOTKINS DINNER
NAPKINS
 2 50-Ct. Pkgs. **53c**

LAUNDRY DETERGENT
SUPER SUDS
 2 16-Oz. Pkgs. **47c**
 40-Oz. Pkg. **57c**

COFFEE MATE
 3-Oz. Jar **27c**
 6-Oz. Jar **49c**
 11-Oz. Jar **75c**

NON-FAT INSTANT
CARNATION DRY MILK SOLIDS
 9½-Oz. 3-Qt. Pkg. **29c** 1-Lb. 9 8/10-Oz. 8-Qt. Pkg. **69c**

MAXWELL HOUSE
COFFEE
 REGULAR OR DRIP
 1-Lb. Bag **85c**

PLAIN or SELF-RISING
PILLSBURY FLOUR
 5 Lb. Bag **61c**

EVAPORATED
PET MILK
 6 5½-Fl. Oz. Cans **47c**
 3 13-Fl. Oz. Cans **47c**