

Festively Delicious! Happily Thrifty! "Super-Right" Meats!

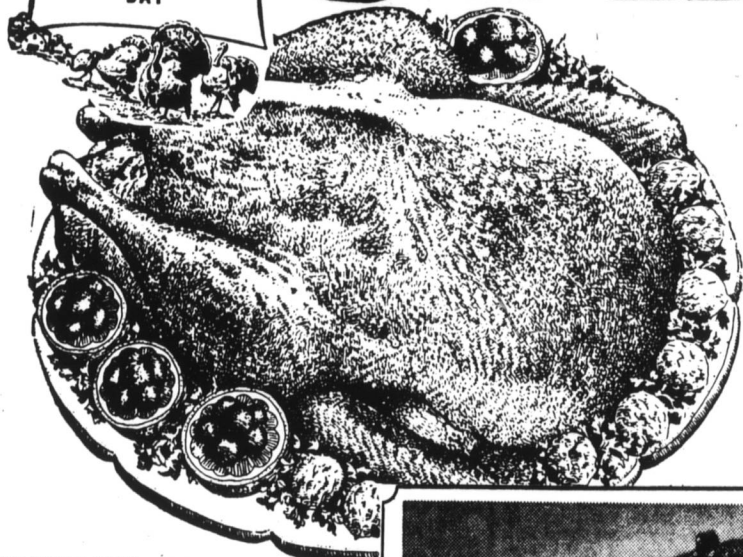
TOP QUALITY YOUNG, THANKSGIVING PRICED

TURKEYS



A&P Cares... About You!

A & P STORES
WILL BE CLOSED
THANKSGIVING
DAY



10 to 14
POUND
AVERAGE
LB.

35^c

16 to 22
POUND
AVERAGE
LB.

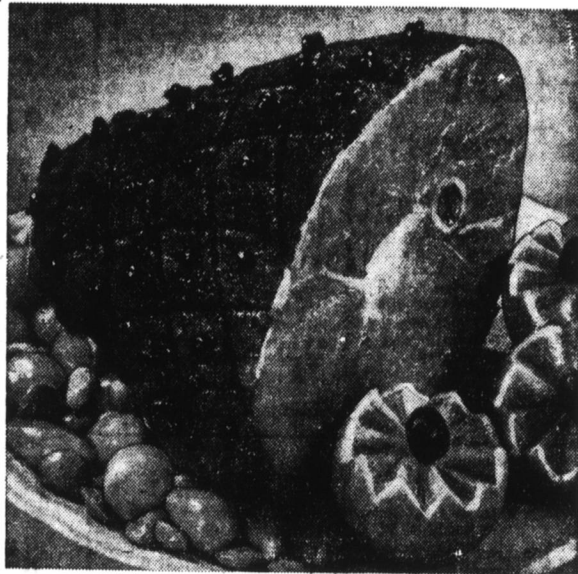
33^c

• UNDER 10-LB. AVERAGE
SMALL TURKEYS LB. 39^c

• ARMOUR VALUE PRICED!
STUFFED TURKEYS LB. 53^c

• A&P BRAND JELLY OR WHOLE CRANBERRY SAUCE 1-LB. 20^c

- TOP QUALITY YOUNG 4 TO 6-LB. DUCKLINGS lb. 47^c
- TOP QUALITY FRESH OR FROZEN CHICKEN HENS lb. 39^c
- "SUPER-RIGHT" 4 TO 6-LB. WHOLE SMOKED PICNICS lb. 43^c
- SWIFT PREMIUM Canned Picnics 3 lb. Can \$2.19
- FRESH PORK HAMS
10 to 14 Lb. Whole Ham lb. 55^c 5 to 7-Lb. Avg. Shank Half lb. 55^c
- SWIFT PREMIUM HAMS
4-Lb. Can \$3.59 5-Lb. Can \$4.39
- "SUPER-RIGHT" FANCY, BONELESS FULLY COOKED, SHANKLESS



"SUPER-RIGHT" QUALITY HOLIDAY PRICED-SHORT SHANK

SMOKED HAM

• WHOLE HAM • • HAM SHANK HALF •

14 to 18
Pound
Average
LB.

55^c

7 to 9
Pound
Average
LB.

55^c

HAM HALVES

AGAR BRAND FULLY

3 1/2 to 4 1/2 Pound Average lb. \$1.19

Cooked Ham 3-LB. CAN \$2.79

"SUPER-RIGHT" QUALITY HEAVY CORN-FED BEEF

Steaks SIRLOIN LB. 85^c PORTERHOUSE OR SIRLOIN LB. 89^c

ANN PAGE FINE FOODS

- ANN PAGE PAPRIKA 2-Oz. Can 25^c
- ANN PAGE RUBBED SAGE 1-Oz. Can 25^c
- ANN PAGE WHOLE CLOVES 1 1/2-Oz. Pkg. 17^c
- ANN PAGE VANILLA EXTRACT 2-Oz. Bot. 39^c
- ANN PAGE Pure Lemon Extract 1-Oz. Bot. 25^c

ANN PAGE CREAMY, CONDENSED

TOMATO SOUP
3 10 1/2 OUNCE CANS. 35^c
2 1-LB. 4-OZ. CANS. 39^c

- ANN PAGE BLUE Cheese Dressing 8-Oz. Pkg. 39^c
- ANN PAGE CREAMY MAYONNAISE 8-Oz. Jar 55^c
- A&P BRAND Smooth Whip Mix 2-Oz. Pkg. 19^c
- SULTANA STUFFED OLIVES 10 1/2-Oz. Jar 65^c

Holiday-Quality Dairy Values!

SUNNYFIELD BRAND—SWEET CREAM BUTTER 1/2-Lb. Pkg. 45^c 1-Lb. Ctn. 89^c

A&P BRAND REAL CREAM TOPPING 6 1/2-Oz. Can 49^c

WHITE HOUSE EVAPORATED MILK 3 13-FL. OUNCE CANS 50^c

Grocery Values For Happy Feasting!

- OUR OWN BRAND—WITH LEMON & SUGAR INSTANT TEA MIX 14-Oz. Jar 59^c
- A&P EXCLUSIVE BRAND IONA TOMATOES 3 1-Lb. Cans 49^c
- SPECIAL THANKSGIVING VALUE LE SEUER GREEN PEAS 1-Lb. 1-Oz. Can 29^c
- 7-CENTS OFF LABEL SWANSDOWN CAKE FLOUR 2-Lb. Pkg. 34^c
- REGULAR OR HONEY MAID NABISCO GRAHAM CRACKERS 1-Lb. Pkg. 51^c
- SERVE WITH CAMPBELL'S SOUP CRACKERS SUNSHINE KRISPY 1-Lb. Pkg. 33^c

FILLERS 3 Cans 29^c

- BAKORN KRISP 1/2-OZ.
- CHEEZ-TRIX 1/2-OZ.
- TOR-TEES 1 1/2-OZ.
- CHEEZ'N RYE 7/8-OZ.
- SWISS 'N RYE 7/8-OZ.
- CORN STIX 1 1/4-OZ.

CAMPBELL'S SOUPS

- VEGETABLE 5 10 1/2-Oz. Cans 69^c
- Chicken Noodle 6 10 1/2-Oz. Cans 89^c

A&P BRAND READY TO EAT CASHEW NUTS 6 3/4 Oz. Can 55^c

A&P BRAND DRY ROASTED PEANUTS 13 Oz. Can 55^c

• BAKE YOUR COOKIES WITH M&M'S CANDIES AND A&P'S OWN PURE VEGETABLE

dexo shortening 3 LB. CAN 79^c

FIRE KING PIE PLATES Each 25^c M&M's Chocolate Candies 1-Lb. Pkg. 49^c

ALUMINUM CAKE PANS Each 29^c Kotex Sanitary Napkins 2 1/2 85^c

"SUPER-RIGHT" BRAND CORNED BEEF 12-OZ. CAN 45^c

WIN CASH up to \$10000

WIN SWEEPSTAKES PRIZES
• COLOR TV'S • HOME FREEZERS • CONSOLE HI-FI STEREO SETS

PLAY 3 of a KIND
SERIES 2-GAME USING NEW GREEN AND BLUE CARDS AND DISCS

- 621 BROAD STREET
- 410 CHAPEL HILL ST.
- 316 DRIVER AVENUE
- 3022 FAYETTEVILLE STREET
- 3300 GUESS ROAD
- 1109 EAST MAIN STREET
- 404 MANOR STREET