

NAACP Lauds Mayor Lindsey's Stand on Riots

NEW YORK—Mayor John V. Lindsay's rejection of the use of excessive police force in riots has been praised by Roy Wilkins, executive director of the National Association for the Advancement of Colored People, who, at the same

time, reiterated condemnation of Mayor Richard J. Daley's order to "shoot to kill arsonist" and "shoot to maim looters."

In a telegram to the New York City Mayor, dispatched Thursday, April 18, Wilkins lauded his position on riot control; condemned the Chicago order that "vests in the police the power of life or death over persons who, in their snap judgment, are arsonists;" asserted that the crimes of looting and arson "cannot be and must not be condoned;" and warned that "these cannot be stamped out by an official policy of killing."

The full text of Wilkins' telegram follows:

National Association for Advancement of Colored People applauds your statement that New York City will not join in any policy which calls for shooting children in a civil disorder situation. We have strongly condemned the widely publicized announcement that Chicago police have been instructed to shoot to kill arsonists and to maim looters. That order vests in the police the power of life or death over persons who, in their snap judgment, are arsonists. The legal penalty for these crimes, once a suspect has been arrested, tried and convicted, is not death or maiming for life. Intensive investigations in cities where disorders occurred in 1967 revealed that under stress many law enforcement officers, state and local, made grievous errors which resulted in the killing of innocent persons. As a consequence, both the reports of New Jersey Commission examining into the Newark riot and that of The National Advisory Commission on Civil Disorders warned against the use of excessive force by police units. Looting and the terrible and cowardly crime of arson cannot be stamped out by an official policy of killing on sight unless our governments become at the same moment garrison states.

The planet Venus, at intervals of about 1 1/2 years, becomes the evening star and draws close enough to the earth to cast a shadow.

North Carolina Garden Time

By M. E. GARDNER
Dept. of Horticultural Science
N. C. State University

What we are discussing this time will apply to azaleas, rhododendrons, camellias and gardenias. It is a common trouble with these plants and one that is not easy to clearly define in a short article. We will call it iron deficiency chlorosis and attempt to clarify in simple terms.

First, the importance of iron in the soil. Although iron is considered to be a minor element, it is essential for the manufacture of chlorophyll, the green coloring matter in plants.

If the iron becomes deficient, it is expressed as chlorosis in the leaves causing them to become yellowish, except along the mid-rib and leaf veins. In advanced stages, the green color may disappear from the mid-rib and veins and the entire leaf becomes almost white.

What makes the iron unavailable to the plant? The pH of the soil is too high. In other words, the calcium (lime) content is too high and the soil too sweet. All of the plants in this group like an acid soil, the azaleas and rhododendrons being a little more sensitive than the camellias and gardenias.

Iron is available to the plant at a pH range of 5.5 to 6.0. At 6.5 the iron availability is reduced and at 7.0, it drops off sharply.

To correct the iron deficiency two things can be done: have your soil tested and adjust the pH to the 5.5 to 6.0 range. This can be done by using sulphur to lower the pH and lime to raise it. This procedure will require some time to overcome the chlorosis, but is the better method because the roots will then be able to absorb the iron from the soil.

There is also a quick method of overcoming the trouble; by foliar feeding. In this method chelated (iron-chelate) iron is used as a spray. Chelating changes the iron into a soluble form which is quickly absorbed by the leaves and stems when applied as a spray.

This material can be purchased from your local garden supply center with full instructions for mixing and applying. It is sold under different brand or trade names. Just be sure that you ask for iron chelate because there are also other chelated materials such as zinc.

First Aid For Gardener's Hands

HOW to keep hands attractive and comfortable is the theme of a new manual for gardeners offered free, in time for the gardening season.

The booklet, titled "First Aid for Gardener's Hands," recommends practical ways to care for hands and nails by the male as well as female garden enthusiast. It is available for the asking from the Pfizer-Pacquin Division, Dept. FB, 235 E. 42nd St., New York N.Y. 10017.

IMPORTED RARE SCOTCH



100% GRAIN NEUTRAL SPIRITS DISTILLED FROM
CORN AND RYE. BOTTLED IN SCOTLAND.

CCF Pre-Summer Sale

10% OFF

All Hotpoint Air Conditioners

One Week Only—Monday, April 29 Thru Saturday, May 4

All Models—5,000 to 29,000 BTU's

Can you remember those miserable sleepless nights last summer? Recall the children whimpering about the heat?

This summer can be cool and comfortable at your house. Get a Hotpoint Air Conditioner now to suit your needs. And save 10%!

Choose the Porta-Cool featured here. Or from many other models. Take your choice of

sizes from 5,000 to 29,000 BTU's. We have Quick-Mount and U-Mount models for easy installation. There's a Side-Mount model for your horizontal sliding windows. Also, a casement window model.

If you think you have a window that won't take an air conditioner or an air conditioning problem that can't be solved, give CCF a chance to tackle it. Come in during this exciting sale!

All New Porta-Cool

This Porta-Cool is a great buy at its regular price! Now take a 10% discount during this special sale.

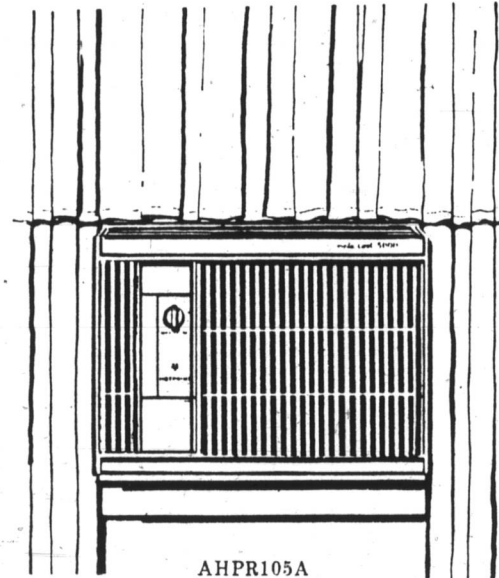
It's a real light-weight—only 64 pounds.

Don't worry about complicated installation with this one. Easy do-it-yourself instructions are part of your purchase. Fits windows as narrow as 20 1/4".

The Hotpoint Porta-Cool operates on 115 volts for plug-in convenience. 5,000 BTU's. Rotamite compressor means extra quietness from the two-speed fan. For practicality—the tilt-out filter is washable.

Furniture styling fits right in with your decor. Rust guardian finish for lasting protection.

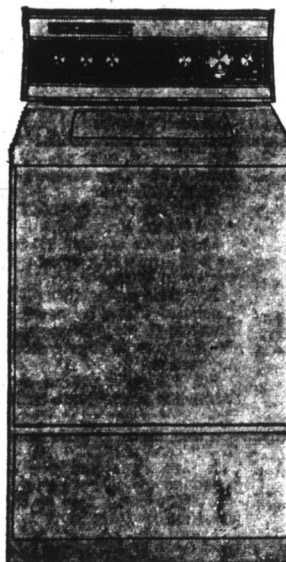
See it this week during the big sale. Then pick it up and take it home!



AHPR105A

Was \$109.77
Now Only
\$98.87

First and Only! Lady Executive Washer



Only from Hotpoint
\$224⁷⁷

washer that lets you choose your own way of washing, and then does it all automatically.

The new
Hotpoint
'Lady Executive'.

Make your own decision from 6 ways to wash:

1. Wash once and rinse once.
2. Wash once and rinse twice.
3. Wash twice and rinse once.
4. Wash twice and rinse twice.
5. Soak, wash and rinse once.
6. Soak, wash and rinse twice.

The Hotpoint 'Lady Executive' washer will also add dry detergent, dispense bleach and fabric softeners, and do it all automatically.

- Porcelain Reel, inside and outside. Protects against rusting, scratching, staining.
- Sparkling white porcelain tub, aquamarine agitator, 6 wash and rinse temperatures. Safety lid switch.
- Permanent press dial with 4-speed control. Handles any type load from heavy duty to delicate wash 'n' wear. Washes 2 lbs. to 16 lb. family loads.
- Automatic soak cycle. Heavy duty 1/2 H.P. motor.

WE TRADE—DELIVER & SERVICE EASY CONVENIENT TERMS



FV310

Thrifty Buy!
Upright Freezer

Thrifty buy for you! Enjoy the convenience of a home freezer. Low initial investment.

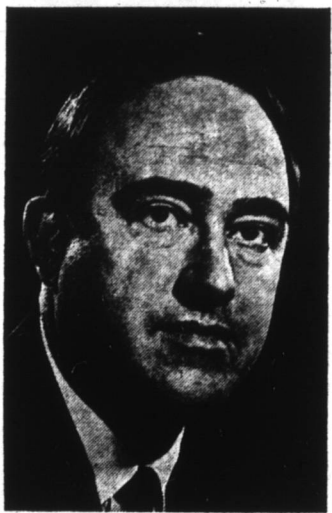
Only 28" wide to save your valuable kitchen space. Yet it holds 354 lbs.—10.1 cu. ft. storage capacity.

Buy meats and other frozen foods when prices are low. Then save them for any-time eating in this freezer. You'll appreciate it at garden harvest time, too.

Many other extra value features. Plus CCF's free delivery and service, easy terms. Come in and see it now!

Only
\$159⁷⁷

Bob Scott is the man to lead North Carolina forward



Vote Bob Scott for Governor

(Paid Political Advertisement)

HOURS

Monday-Tuesday

Thursday-Friday

7:30-5:00

Durham Store

'Til 5:30

Wednesday-

Saturday

7:30-12:00

Total Clean Range New Low Price

Eliminate the distasteful job of even "cleaning forever." Take three simple steps: (1) Close and latch the door; (2) Set the control switch to "Clean"; (3) Set the timer for cleaning time. It's that simple to clean your oven automatically!

This self-cleaning oven is economical—costs only about 7 cents per cleaning.

Cool—Heavy insulation cuts heat to the same as cooking an ordinary meal.

Efficient—No special touch-up cleaning necessary.

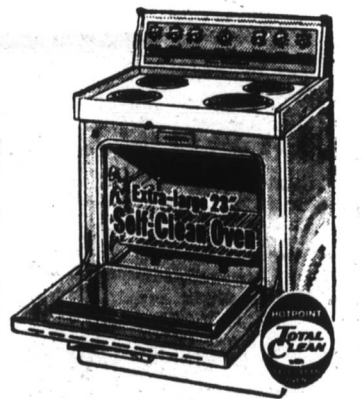
Automatic—It cleans itself!

Easy to install—No special installation costs for self-cleaning models.

And you can cook on the self-cleaning surface units while the oven is cleaning itself.

Why settle for less when you can have a Hotpoint Total-Clean with Self-Clean Oven for so little from CCF?

Now Only **\$199.77**



CENTRAL CAROLINA FARMERS, INC.

Phone 682-6141

801 Gilbert St., Durham, N.C.

Carrboro • Creedmoor • Hillsborough • Oxford • Pittsboro • Roxboro • Siler City