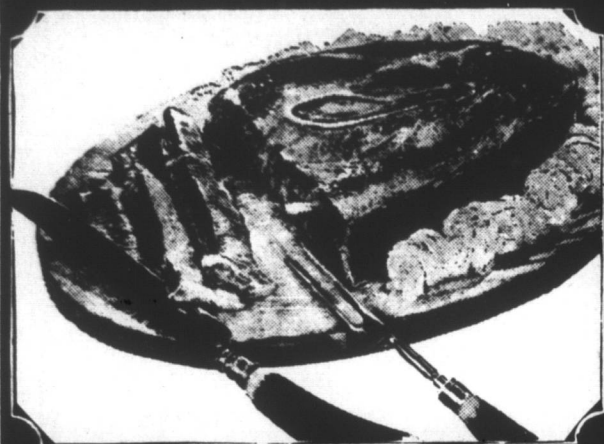


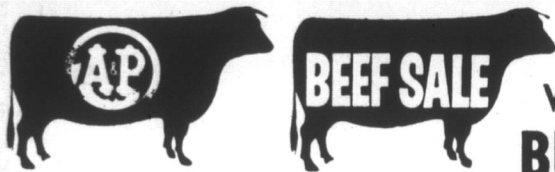
"SUPER-RIGHT" QUALITY CORN-FED HEAVY BEEF



STEAKS

T-BONE OR PORTERHOUSE **\$1.15** lb.

SIRLOIN **\$1.09** lb.



"SUPER-RIGHT" QUALITY CORN-FED BEEF 20 TO 25 LB. AVG. WHOLE SIRLOIN BUTT Lb. **85c**



"SUPER-RIGHT" QUALITY CORN-FED BEEF FRESHLY **GROUND CHUCK** Lb. **69c**

"SUPER-RIGHT" QUALITY FRESH

PORK LOIN

• CHOPS • ROASTS •
Center Cut Rib lb. 69c Center Cut Rib lb. 65c — Loin lb. 75c
End Cut Chop lb. 39c Rib End (with 7 ribs) lb. 39c
Center Cut Loin lb. 79c Loin End Roast lb. 45c
1/4 LOIN SLICED into chops lb. 53c Whole or 1/2 Loin lb. 49c



WE CARE

"If unable to purchase any advertised item please request a RAIN CHECK!"

PRICES IN THIS AD EFFECTIVE THROUGH JANUARY 30, 1971

Better Meals Are Made With "Super-Right" Meats!

FROZEN MEATS & SEA FOOD

HORMEL FROZEN **CHUCK WAGON STEAKS** 1-Lb. Pkg. **89c**
CAP'N JOHN'S FROZEN OCEAN **PERCH FILLETS** 1-Lb. Pkg. **59c**
CAP'N JOHN'S FROZEN FILLÉT OF **FLOUNDER** 1-Lb. Pkg. **79c**

"SUPER-RIGHT" BRAND CANNED

HAMS FULLY COOKED 4 Lb. Can **\$2.88**
OSCAR MAYER SLICED ALL MEAT **BOLOGNA** 12-Oz. Pkg. **65c**
OSCAR MAYER SLICED **SPICED LUNCHEON MEAT** 8-Oz. Pkg. **53c**

ALLGOOD BRAND SLICED

BACON 1-Lb. Pkg. **49c** 2-Lb. Pkg. **97c**
"SUPER-RIGHT" ALL MEAT **FRANKS** 12-Oz. Pkg. **49c** 1-Lb. Pkg. **59c**
SERVE 'EM FOR SUPPER **BALL PARK FRANKS** 1-Lb. Pkg. **79c**

A&P PRODUCTS ARE THE FINEST QUALITY-A&P PRODUCTS SAVE YOU MONEY!

SERVE HALVED FOR BREAKFAST JUICY FLORIDA

• **TEMPLE ORANGES** #80 For **10 39c**

WASHINGTON STATE RED OR GOLDEN

• **DELICIOUS APPLES** Lb. **19c**
• **STRAWBERRIES** 3 Pint Baskets **89c**
• **YELLOW ONIONS** 3 Lb. Bag **25c**

CRISP GREEN JUMBO **CELERY** 2 Stalks **35c** D'ANJOU **PEARS** Lb. **25c** SHOP A&P FOR FRESH **PEANUTS** SALTED ROASTED 12-Oz. **39c** ROASTED 11-Oz. Pkg.

SAVE WHEN YOU BUY A&P SPECIALLY BLENDED **VACUUM PACK COFFEE** 2-Lb. Can **\$1.79**
BUY A&P'S OWN EXCLUSIVE BRAND **OUR OWN TEA BAGS** 48 Ct. Pkg. **55c**
"FINEST IN QUALITY"
A&P EVAPORATED MILK 3 5 1/2 Fl. Oz. Cans **31c**



GREEN GIANT VALUES

Green Giant Sweet Peas 17-Oz. Can
NIBLETS Golden WHOLE KERNEL Corn 12-Oz. Can
Green Giant KITCHEN SLICED Green Beans 16-Oz. Can
GREEN GIANT MEALTIME TREATS **NIBLETS Mexicorn** 12-Oz. Can
CREAM STYLE YELLOW **Green Giant Corn** 17-Oz. Can
GREEN GIANT SHOE PEG **NIBLETS White Corn** 12-Oz. Can
GREEN GIANT WHOLE KERNEL **Country Style Corn** 12-Oz. Can

4 CANS OF YOUR CHOICE \$1.00

GREAT WITH "SUPER-RIGHT" FRANKS VAN CAMP'S **PORK & BEANS** 2 1-Lb. Cans **39c**

Bakery Values!

JANE PARKER BAKE 'N SERVE ROLLS 13-Oz. Pkg. **TWIN ROLLS** 4 Pkgs. **\$1.00**
10-Oz. FRENCH TOPPED WITH SESAME SEEDS
JANE PARKER **SPANISH BAR CAKE** 19-Oz. Pkg. **35c**
GIANT GOLD LOAF Jane Parker 26-Oz. **59c**
CAKE DONUTS : GOLDEN SUGARED 12-Ct. 11 Oz. Pkg. **29c**
DANISH ALMOND Jane Parker 9-Oz. **49c**
PINEAPPLE BUNS Jane Parker 3 9-Oz. Pkgs. **\$1.00**
JANE PARKER **APPLE PIE** 22-Oz. **39c**
8-INCH
BLACKBERRY PIES Jane Parker 22-Oz. **49c**
DANISH CAROUSEL Jane Parker 18-Oz. **89c**
JANE PARKER WHOLE WHEAT SEEDED or SOUR RYE VIENNA **VARIETY BREAD** 4 1-Lb. Loaves **1.00**

FOR LUNCH SERVE ANN PAGE **TOMATO SOUP** 2 10 1/2 Oz. Cans **25c**
SERVE WITH SANDWICHES—ANN PAGE **TURKEY NOODLE SOUP** 7 10 1/2 Oz. Cans **\$1.00**
ANN PAGE CREAMY OR CRUNCHY—THRIFTY **PEANUT BUTTER** 28 Oz. Jar **79c**
TOP YOUR SALAD WITH ANN PAGE **SALAD DRESSING** 8 Oz. Jar **55c**
HERE IS A GREAT PUDDING IDEA—ANN PAGE **REGULAR PUDDING** 3 Oz. Pkg. **10c**
SERVE ON WAFFLES—ANN PAGE **PANCAKE AND WAFFLE SYRUP** 24 Oz. Bottle **49c**

ANN PAGE VALUES

CHOOSE FROM ALL FLAVORS **Marvel Ice Milk** 1/2 Gal. Ctn. **39c**
CHOOSE FROM ALL FLAVORS **Cream Pies** BY MORTON 3 14 Oz. Pkgs. **89c**
SHOP A&P FROZEN FOODS 2 LB. PKG. **43c**
Peas & Carrots 10 Oz. Pkg. **15c**
RED SOUR PITTED
A&P Pie Cherries 2 1-Lb. Cans **49c**
JANE PARKER ENRICHED, REGULAR
White Bread 5 1-Lb. Loaves **\$1.00**

• WONDERFUL VALUES FROM A&P • IONA YELLOW CLING

YOUR CHOICE — HALVES OR SLICES

PEACHES #2 1/2 31-OZ. CAN **29c**