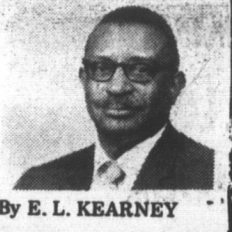


CHEYENNE SCOUTS CORNER

THE TWELVE POINTS OF THE SCOUT LAW



By E. L. KEARNEY

This weeks column will feature one of the twelve points of the Scout Law:

"A Scout is reverent - he is reverent toward God. He is faithful in his religious duties, and respects the convictions of others in matters of customs and religion."

It is my feeling that Walter Dudley Cavert did a splendid job in his Book of Prayers for Scouts and I would like to share one with you.

Grant, O God, that I may remember my creator in the days of my youth. Each morning may I seek thy guidance. Each evening may I ask for thy blessings. Through the day may I have thee as my companion and guide.

Make me faithful in my duty to thee. Through prayer and the study of the Bible, lead me into an understanding of thy will. Make me glad to go to church to worship thee. In my daily life, may I show my love for thee by loving my fellow men.

May I be grateful for the privilege of living in a country where each person is free to worship according to his own conscience. Give me respect for those whose religion is different from mine. While I maintain a steadfast loyalty to my own church, may I defend the rights of others to worship as they please. Grant

that religious freedom may never mean religious neglect. Take my life into thy keeping and make me a worthy follower of thy Son, Jesus Christ. Amen.

College View Nursery Gives "Fashionetta"

College View Nursery school will present "Fashionetta" a fashion and talent show Sunday, May 30, at 6:00 p.m. in the Durham Business College auditorium. A portable television will be given as first door prize. Models will be nursery pupils, teenagers, models from Tonita's Weigh and Belts.

Special feature by Mrs. James Younge in African wear will climax an evening of exciting entertainment. Your patronage will be greatly appreciated.

COMPLAINTS VS REMEDIES
Los Angeles—In a recent speech at the Los Angeles Chamber of Commerce, Vice President Agnew said that this nation has several urgent needs, but said to much emphasis was being placed on the problems and not enough on attempts to solve them. He said such a negative attitude was helpful to North Vietnam and the Viet Cong.

Fayetteville St. Pupil Reports on Tour of D.C.

3-1 Class
On May 1st 38 pupils from Fayetteville Street Elementary School toured Washington, D. C. along with three advisors.
"My Trip to Washington

By Valjeanne Estes

We gathered at Fayetteville Street school at 5:30 a.m. The bus arrived in Washington at 12:30 - noon.

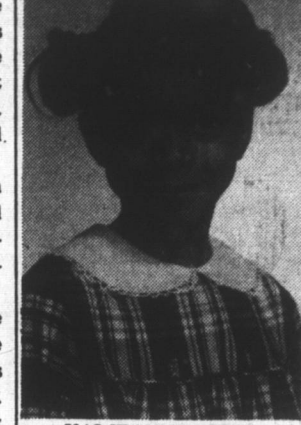
First we went to Richmond, Virginia and stopped at the bus station. We bought comic books and souvenirs. Then we went to Mount Vernon, the home of George Washington. We went through

all the rooms. We saw the room he died in. We saw his grave too. When we were getting ready to go we bought books about Mount Vernon. Then we started toward Washington.

When we got to Washington we went to the National Museum of History and Technology. We saw beautiful pictures and arts.

After that we went to the Smithsonian Institution. There we saw the Wright Brothers airplane. It looked old fashion.

Then we went to the Wax Museum. We saw Benjamin Franklin's experiment, John F. Kennedy getting shot. We also saw Betsy Ross sewing



VALJEANNE ESTES the flag, Martin Luther King, George Washington Carver, the man who invented the peanut, Abraham Lincoln when he was

shot, Pocahontas when she saved John Smith, and we saw Daniel Boone.

After that we had dinner and went to the Hotel and went to bed.

On Sunday we had breakfast at the Hotel. Then we went to the Washington Monument, but we could not go in because the hippies were protesting against the war.

Then we went to the Zoo.

We saw the monkeys, llamas, elephants and other animals. After we came from the zoo we took pictures.

Then we went to John F. Kennedy's Grave. After that we came home.

Our chaperones were Mrs. A. B. Biggers, Mrs. B. W. Baker and Mrs. M. C. Allen. There were 38 pupils and 3 teachers making the trip.

THE CAROLINA TIMES—8A SATURDAY, MAY 22, 1971

ston, Hester Brown, Ollie Ray, Sophie Powell, Dr. Hubbard, Odessa Frack, Mary Perry, Roberts Allen, Louise Lee, Mattie Lee, Katie Lunsford, Alice Carrick, Virginia Bridges, Pearl Evans, Annie Daye, and Elizabeth Evans. There were two new members to join, Leora Pettiford and Linda Evans.

The 11th anniversary of the club will be celebrated at Orange Grove Baptist Church Sunday, May 30, at 7:30 p.m. Rev. P. H. Amey will deliver the message.

Kent violence blame divided in report.

LAMPLIGHTERS CLUB MEETS WITH MRS. ELIZABETH EVANS SUNDAY

The Lamp Lighters Club met at the home of Miss Elizabeth Evans Sunday, May 16, at 5 p.m. The meeting was called to order by the president, Mrs. Annie Daye. After a brief business session, the meeting closed. Refresh-

ments were served by the hostess.

The next meeting is to be at the home of Mrs. Linda Evans Sunday, June 20, at 5 p.m.

Members attending Sunday's meeting were: Helen Al-

RIGSBEE TIRE SALES 4-DAY ONE-OF-A-KIND SALE

TUESDAY thru FRIDAY Hours: 8 a.m. to 6 p.m., Friday 8 to 8

You're in luck! We just checked our inventory and came up with a large number of one-of-a-kind quality Westinghouse appliances that we want to move now so that we may adjust our inventory. . . . We're putting on this special sale to give you great savings in order to move this merchandise. We've also made a few special purchases of 1970 Westinghouse factory close-outs which we've added to this sale. If we have the size and features that you need, you're really in for a good deal. Don't wait, come in as soon as possible and save plenty! All will be sold on a first-come, first served basis . . . Remember, this sale is for Tuesday through Friday only. . . . So you'd better hurry!



REFRIGERATOR-FREEZER BARGAINS			
Westinghouse RT121L 17.1 cu. ft. "Frost Free" Refrigerator-Freezer Automatic Ice-maker—7-day Meat Keeper Reg. \$429.95 \$356²⁵ Exchange	Westinghouse RC131L 12.5 cu. ft. Refrigerator-Freezer 61-lb. Freezer—Frozen Storage Tray 14.5 lbs. Full-width Crisper Reg. \$249.95 \$168⁵⁰ Exchange	Westinghouse RT121L 12 cu. ft. 1 Refrigerator-Freezer Automatic Defrosting Refrigerator Section—100-lb. Freezer Full-width Door Shelves Reg. \$289.95 \$199⁵⁰ Exchange	Westinghouse RS131LXW 18.6 cu. ft. Frost Free "Side-by-Side" Refrigerator-Freezer Only 31" Wide—28-lb. Freezer Heavy-duty Castlewood Shelves Glide-out Adjustment Rollers Reg. \$589.95 \$452⁵⁰ Exchange



Westinghouse "Frost-Free 16" Side-By-Side REFRIGERATOR-FREEZER
245 lb. capacity freezer 9.50 cu. ft. capacity refrigerator. Only 31 inches wide. Twin juice can dispensers. 2 quick release ice trays. Deep door shelves. Separate temperature controls in refrigerator and freezer.
Reg. \$539.95
(White Only) **\$369⁰⁰** Exchange

USED SPECIAL!
22-ft. Frost Free Westinghouse SIDE-BY-SIDE REFRIGERATOR-FREEZER
Excellent Condition
If new price would be \$639
\$399⁰⁰

FREE BAR-B-Q GRILL with purchase of any Westinghouse Appliance during this Sale as long as supply lasts.
Portable BBQ GRILL
3 POSITION CHROME GRILL
NO BOLTS TO ASSEMBLE SIMPLY INSERT LEG INTO BRACKET
STURDY GAUGE
BRASS FOLDING LEGS

Westinghouse "Frost Free 17" REFRIGERATOR-FREEZER
163 lb. capacity freezer. Separate controls for refrigerator and freezer. Deep door shelves. 7 day fresh meat keeper converts to moist-cold extra crisper. Slim-wall design
One-of-a-Kind Sale
Reg. \$389.95 **\$299⁵⁰** Exchange

WASHER-DRYER BARGAINS
Westinghouse Automatic Electric 2-Cycle WASHER
With PRE-WASHER
Reg. \$219.95
LA680LXW **\$168⁵⁰** Exchange
Westinghouse Automatic Electric DRYER
Reg. \$199.95
DE7250 **\$99⁰⁰**

HEAVY DUTY WASHER DRYER
LA680LXW
4 water temperature selections including permanent press.
True 16 lb. capacity Porcelain enamel tub & lid
5 position water saver control
3 wash & spin speed selections
Reg. \$259.95 **\$199** Exchange
DE680LXW
True 16 lb. Capacity. 3 cycle—Perm. Press & Time Dry.
3 position temperature selector.
Regular, Low & Air Fluff. Easy to reach lint collector. Porcelain enamel basket.
Reg. \$189.95 **\$155** Exchange

Westinghouse ELECTRIC Continental Range
Self-clean lower oven. Flaver-speed broiling. Plug-out. Co-rod surface units and chrome trim pans "Magic-Mirror" top oven door.
Regular \$529.95
\$447⁵⁰ Exchange KEK12HW

Westinghouse "Frost Free" 17 Cu. Ft. UPRIGHT FREEZER
Completely frost-free 285 lb. capacity. Air-sweep shelves—let you freeze food quickly on any shelf. Exterior safety signal light—goes off to warn of any electrical interruption or if door is accidentally left open.
Reg. \$349.95 **\$278⁵⁰**

Westinghouse DELUXE COMPACT 6000
Plugs in like a lamp. Light-weight—Only 41 lbs. Adjustable air directional louvers. 3-speed fan: High, Medium and Night cool. Easy-to-install zip kit.
Reg. \$179.95
\$159⁹⁵

Westinghouse PRE-SEASON PRICES Still In Effect On Air Conditioners
Westinghouse High Capacity AIR CONDITIONER
3,000 BTU—11 Position Adjustable Thermostat
3-Speed Fan—Quick Mounting Kit
Reg. \$239.95 **\$214⁰⁰**
Westinghouse Special Southern AIR CONDITIONER
Adjustable Thermostat. 3-speed fan. Adjustable at \$339.95
Reg. \$339.95 **\$299**
Use Riggsbee Tire Sales Convenient Budget Plan or Your Favorite Charge Card

Westinghouse TASTEMAKER RANGE
Automatic timing center with 60 min. timer. 1,001 heat controls—Three 6" one 8" plug-out. Corax high speed surface units.
Reg. \$239.95
\$174⁵⁰ Exchange

Westinghouse 23 cu. ft. CHEST FREEZER
265-lb. Capacity—Tumble Lock—2 Locks—High-speed surface units. Locks in either direction. Automatic Interior Light
Reg. \$349.95 **\$268⁵⁰** Exchange

Westinghouse DELUXE COMPACT 6000
Plugs in like a lamp. Light-weight—Only 41 lbs. Adjustable air directional louvers. 3-speed fan: High, Medium and Night cool. Easy-to-install zip kit.
Reg. \$179.95
\$159⁹⁵

Westinghouse PRE-SEASON PRICES Still In Effect On Air Conditioners
Westinghouse High Capacity AIR CONDITIONER
3,000 BTU—11 Position Adjustable Thermostat
3-Speed Fan—Quick Mounting Kit
Reg. \$239.95 **\$214⁰⁰**
Westinghouse Special Southern AIR CONDITIONER
Adjustable Thermostat. 3-speed fan. Adjustable at \$339.95
Reg. \$339.95 **\$299**
Use Riggsbee Tire Sales Convenient Budget Plan or Your Favorite Charge Card

OTHER ELECTRIC RANGE BARGAINS			
Westinghouse 30-INCH ELECTRIC Range KFP1210W Self-clean oven. Plug-out surface units. Automatic clock. Infinite heat controls. Reg. \$249.50 \$329.95 \$249⁵⁰ Exc	Westinghouse TASTEMAKER 30-INCH Electric Range KFP1200L 1200W Corax units. Oven about 1,001 heat controls. Reg. \$189.50 \$189.95 \$139⁵⁰ Exc	Westinghouse 40-INCH ELECTRIC Range KEE100 With warm and slow oven. Plug-out Corax units. Lock in either direction. Automatic Clock. Extra Special Reg. \$349.95 \$229⁰⁰ Exc	Westinghouse 40-INCH TASTEMAKER Range KFP200 Two 6" and two 8" burners. Corax high-speed surface units. Locks in either direction. Automatic Clock. Infinite heat controls. Extra Special Reg. \$249.95 \$205⁰⁰ Exc

EXPRESSWAY 100 HOUR SALE

BUY A CAR WITH A 100% WARRANTY

Get An Extra Bonus of 100 Gals. FREE GAS

WITH EACH PREMIUM CAR Listed provided you buy during the 100 HOUR SALE

OUR PREMIUM SELECTION

69 Chrysler Newport Custom 4-door Sedan. Blue finish with matching interior, radio, heater, power steering, power brakes, automatic transmission, tinted windows, air conditioned, remote control mirror, wheel covers, whitewall tires. Save \$300 . . . NOW **\$2695**

68 Chrysler 300 Series 2-door hardtop. Blue finish, black vinyl top, all vinyl interior. Radio, heater, power steering, power brakes, automatic transmission, tinted windows, air conditioned, remote control mirror, wheel covers, whitewall tires. Save \$400 . . . NOW **\$2295**

68 Imperial Crown 4-door Sedan. Green finish, white vinyl top, matching interior, radio, heater, power steering, power brakes, power windows, power seat, tinted windows, automatic transmission, air conditioned, wheel covers, whitewall tires. Save \$600 . . . NOW **\$2895**

67 Chrysler New Yorker 4-door Hardtop. White finish with vinyl top, blue interior, radio, heater, power steering, power brakes, power windows, tinted windows, automatic transmission, air conditioned, wheel covers, whitewall tires. Save \$300 . . . NOW **\$2095**

68 Oldsmobile Delmont 88 4-dr. Sedan. Beige finish, all green vinyl interior. Radio, heater, power steering, power brakes, tinted windows, air conditioned, remote control mirror, automatic transmission, wheel covers, whitewall tires. Save \$400 . . . NOW **\$1895**

67 Buick LeSabre 2-door Hardtop. Blue finish, all black vinyl interior. Radio, heater, power steering, power brakes, remote control mirror, automatic transmission, wheel covers, whitewall tires. Save \$245 . . . NOW **\$1650**

69 Dodge Polara 2-door Hardtop. Snow white finish, all black vinyl interior. Radio, heater, power steering, tinted windshield, automatic transmission, wheel covers, whitewall tires. Save \$245 . . . NOW **\$2150**

70 Plymouth Fury II 4-door Sedan. Blue finish, matching interior, radio, heater, power steering, automatic transmission, tinted windows, air conditioned, wheel covers, whitewall tires. Save \$300 . . . NOW **\$2695**

Register for Free Used Station Wagon To Be Given Away — No Obligation

ELKINS CHRYSLER — PLYMOUTH

Your Customer-Oriented Auto Center
Expressway—Downtown Durham 688-5511

Stewart Riggsbee — J. D. Brothers

RIGSBEE TIRE SALES

2720 Hillsborough Road—Ph. 286-4444 • 108 Lakewood Ave. Phone 688-1383

Hours: Monday thru Friday 8 a.m. to 6 p.m.; Friday 8 to 8; Closed Saturday

JIM PIPKIN
Sales Manager
108 Lakewood Ave.

HERBERT FINCH
Sales Representative
108 Lakewood Ave.

GRAHAM BOSWELL
Sales Representative
2720 Hillsborough Road

DON SALMON
Sales Manager
2720 Hillsborough Road