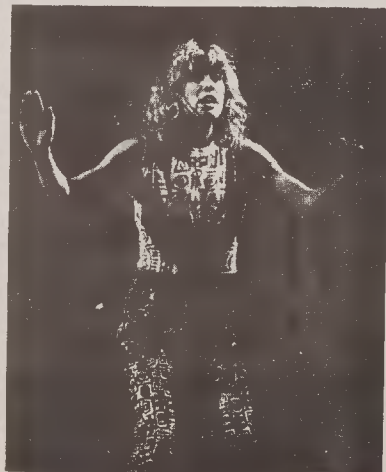


INSIGHTS & entertainment



JAWOLE WILLA JO ZOLLAR



CELESTE MILLER



ALICE LOVELACE

Southeastern Artists To Perform For Community Arts Revival

Durham artists Two Near the Edge will join touring artists Jawole Willa Jo Zollar (artistic director of Urban Bush Women), Celeste Miller, Jon Spelman, Elise Witt and Alice Lovelace and others for a benefit performance at 8:30 p.m., Friday, January 28, at Page Auditorium on Duke University's West Campus as part of A Community Arts Revival.

Storytelling, music and performance art will be included in the event which will spotlight the theme of the four-day conference: "reviving the arts' historical role at the center of community, life." The Revival will examine ways in which artists and communities can act as partners for social change.

The performance, benefits Alternate ROOTS (Regional Organization of Theaters South), presenter of the Revival. ROOTS is a Southeastern artists' organization that supports the partnering of artists and communities. Emcees for the evening are New Orleans performer Kenneth C. Raphael and Virginia writer/dancer Ann Kilkelly. Two Near the Edge (L.D. Burris and Carol Childs) will open the Friday evening program.