

STATE MAJORITY REDUCED

(Continued from page one)
ships out of the congressional and legislative tickets have about the same majority. The county ticket received from 450 to 460. Bryan's majority is about 500. The vote was tight about the same vote and majority as 1906.

BURKE

Special to The Observer.
Morganton, Nov. 3.—Burke is safely Democratic by from 250 to 300 majority. All Democratic county officers are elected. The Democratic Representative's majority is estimated at 300.

CABARRUS

Special to The Observer.
Concord, Nov. 3.—Returns from Cabarrus county are incomplete, but indicate about 200 Republican majority.

CALDWELL

Special to The Observer.
Lenoir, Nov. 3.—Returns from this county to 12:15 p. m. follow:
President—Bryan 1,089; Taft 1,283.
Governor—Kitchin 1,073; Cox 1,275.

Lieutenant Governor—Newland 1,180; Toms 1,325.
Congressman—Cox 328 majority.
State Senator—J. C. Sherrill, Republican, 180 majority.
State Representative—M. N. Harrison, Republican, 1,375; L. H. Tuttle, Democratic, 1,150.

The county goes Republican by an approximate majority of 150, with the exception of sheriff. Thirty-six precincts are yet to hear from.

Lieutenant Governor—Newland 1,180; Toms 1,325.
Congressman—Webb 1,232; Smith 1,415.
State Senators—J. C. Mills and M. D. Ray, Democratic 1,415 each; F. D. Hamrick and S. Mads, Republican, 1,433 each.
State Representative—D. S. Lovelace 2,260; J. E. Green 1,450.

The county goes Democratic by an approximate majority of 300. Part of the returns are not official, but the figures given are practically correct.

CRAVEN

Special to The Observer.
Newbern, Nov. 3.—Election returns from this city to 10:30 o'clock to-night follow:

President—Bryan 155; Taft 115.
Governor—Kitchin 548; Cox 58.
Lieutenant Governor—Newland 493; Toms 53.
Congressman—C. H. Thomas 523; E. W. Hill 41.
The county goes Democratic by an approximate majority of 1,000. Sixteen out of 10 precincts give Democratic majority of 1,444. Impossible to get reports from other precincts to-night. All Democratic candidates elected in county and State and national tickets have majority of 1,000.

CHEROKEE

Special to The Observer.
Murphy, Nov. 3.—It is estimated Grant's majority in Cherokee will not be more than 150, and Clay gives Crawford 21 majority.

CHOWAN

Special to The Observer.
Edenton, Nov. 3.—The county goes

250 to 300. county State, congressional and national tickets. Complete returns are not in.

DUPLIN

Special to The Observer.
Warner, Nov. 3.—Election returns from this county to 10 o'clock to-night follow:

President—Bryan 1,300; Taft 1,000.
Governor—Kitchin 1,490; Cox 550.
Lieutenant Governor—Newland 1,450; Toms 450.
Congressman—C. R. Thoms 1,500; E. W. Hill 800.

Lieutenant Governor—Newland 1,180; Toms 1,325.
Congressman—A. L. Brooks 1,675; J. M. Morehead 1,335.
State Senator—J. S. Manning 1,735; T. B. Tally 1,235.
State Representative—Y. E. Smith 1,225; W. G. Bramham 1,690.

The county goes Democratic by an approximate majority of 500.

EDGECOMBE

Special to The Observer.
Tarboro, Nov. 3.—Election returns

FORREST

Special to The Observer.
Winston-Salem, Nov. 3.—Incomplete returns at 9:30 o'clock in Forsyth county indicate a close vote, with the possibility of two or three Republican county candidates getting in. Results in this county are reported in many precincts. Winston will give 850 Democratic majority. Salem about 75 Republican majority. There was much scratching of the ticket and Bryan and Brooks are apt to loose the county.

Special to The Observer.
Winston-Salem, Nov. 4.—Returns indicate that the entire Republican ticket in Forsyth county is elected by a plurality ranging from 25 upwards. Morehead led by a plurality of about 300 over Brooks. Taft got 275 plurality over Bryan; Cox 100 over Kitchin; Starbuck (estimated) 60 over Brown for Senate; Hall and Simpson 30 over Carter and Cox for House. The Democratic hopes that Ziglar, sheriff, and Beck, treasurer, may squeeze through. They lead their tickets and the margin between them and their opponents is very small. The county seat time was 300 Democratic. Winston gave a Democratic majority of about 400. Salem gave Taft a majority and several others on the Republican ticket also.

J. A. J. o'clock this morning doubt still existed as to the election of several candidates on either side. There was so much scratching of tickets that an official count will be required to decide. Apparently Ziglar and Beck are elected by from 30 to 60 votes. Salem gave Taft 80 majority, Cox 42 and Morehead 61.

FRANKLIN

Special to The Observer.
Louisburg, Nov. 3.—Returns to 8 p. m. indicate that Franklin will give a Democratic majority of 1,500.

GASTON

Special to The Observer.
Gastonia, Nov. 3.—Incomplete returns from Gaston county indicate that the Democratic ticket will win by a small majority. The greatest fight was on the State legislative ticket because of the court house removal question. Indications are that W. T. Love, Democrat, will defeat L. M. Hoffman for the State Senate by a narrow margin. Gaston precincts give Love a majority of 600. Out of eighteen precincts only four or five have been heard from.

GRANVILLE

Special to The Observer.
Oxford, Nov. 3.—The county goes Democratic by an approximate majority of 1,000, with the exception of Brooks for Congress who will get about 300. A. W. Graham for the Legislature will lead the county ticket.

GASTON

Special to The Observer.
Oxford, Nov. 3.—Oxford township: Kitchin 478 majority; Brooks 478 majority.
Geneva township: Kitchin 97; Cox 43; Brooks 107; Morehead 43.

GUILFORD

Special to The Observer.
High Point, Nov. 3.—This township will give a Democratic majority of about 200 for the whole ticket, except Bradshaw for commissioner, who was scratched by laborers. At this hour for Congress Brooks wins out over Morehead by a good majority. Randolph county reports a safe majority for the Democratic ticket.

HAYWOOD

Special to The Observer.
Waynesville, Nov. 3.—Election returns from Waynesville township at 8:30 o'clock to-night follow:
President—Bryan, estimated, 679; Taft 226.
Governor—Kitchin, estimated, 675; Cox 220.
Lieutenant Governor—Newland 675; Toms 220.
Congressman—Crawford 290; Grant 217.
State Senator—Fry, estimated, 678; Bryan 220.
State Representative—Ferguson 675; Smithers 220.
The county goes Democratic by an approximate majority of 750.

HALIFAX

Special to The Observer.
Scotland Neck, Nov. 3.—Out of 2,350 votes in the county Kitchin received 2,205. The regular Democratic county ticket gets about 1,500 with about 60 for the independent ticket.

HARNETT

Special to The Observer.
Dunn, Nov. 3.—Harnett goes Democratic by over 600 majority, all ticket.

IREDELL

Special to The Observer.
Statesville, Nov. 3.—Iredell's majority for Hackett is 700, which is 210 off from the election two years ago.

JACKSON

Special to The Observer.
Spartanburg, Nov. 3.—The Republicans elect sheriff; the rest of the county ticket and also the State and national being Democratic by a very small majority. The election was quiet.

JOHNSTON

Special to The Observer.
Smithfield, Nov. 3.—Johnston county elects a full Democratic ticket by a majority of 350 to 400. Very little scratching.

JONES

Special to The Observer.
Trenton, Nov. 3.—Returns up to 11 p. m. show Jones county has gone Democratic by a majority of about 300.

LEE

Special to The Observer.
Sanford, Nov. 3.—Election returns from Lee county to 9:30 p. m.:
President—Bryan 225; Taft 525.
Governor—Kitchin 550; Cox 500.
Lieutenant Governor—Newland 550; Toms 500.
Congressman—R. N. Page 550; Z. V. Walser 500.
State Senator—Democratic 550; Republican 500.

LENOIR

Special to The Observer.
Kinston, Nov. 3.—Lenoir county will give 650 Democratic majority. Kitchin will lead Bryan. There is an increased Taft vote over Roosevelt's vote.

LINCOLN

Special to The Observer.
Lincoln, Nov. 3.—Returns are hard to get here but the indications are that Lincoln county will go Democratic by 75 to 125 majority.

MACON

Special to The Observer.
Franklin, Nov. 3.—The election returns to 12 o'clock to-night are so incomplete that an enumeration of them would be misleading. The indications are that the county is very close, some of the county officers being Democrats and others Republicans. The same doubt exists as to State and national tickets.

MADISON

Special to The Observer.
Marshall, Nov. 3.—Taft carries Madison county by 300 majority. Smith wins over Webb by 800 majority. The Democrats make considerable gains on the county ticket.

MARTIN

Special to The Observer.
Williamston, Nov. 3.—Returns from Martin county complete are:
President—Bryan 1,331; Taft 421.
Governor—Kitchin 1,832; Cox 361.
Lieutenant Governor—Newland 1,360; Toms 360.
Congressman—Small 1,410; Meekins 312.
State Senators—Martin and Latham 1,462; Republicans 223.
State Representative—Stubbs 1,471; Green 322.

MCDOWELL

Special to The Observer.
Marion, Nov. 3.—State and presidential tickets are Democratic by about 100 majority. The congressional vote is close, the indications being that Crawford has a small majority. Price, Democrat, is chosen for Legislature by over 100 majority. The rest of the county ticket is in doubt and an official vote will be required.

MITCHELL

Special to The Observer.
Bakersville, Nov. 3.—The estimated Republican majority of Mitchell county is 1,600. The national ticket runs ahead.

MONTGOMERY

Special to The Observer.
Troy, Nov. 3.—Montgomery county goes Democratic from 50 to 100 majority. The entire county and legislative ticket is elected.

MOORE

Special to The Observer.
Southern Pines, Nov. 3.—Southern Pines precinct goes Democratic by 23 majority; county ticket: Sheriff, Democratic 48; Legislature, Democratic 42.

MURPHY

Special to The Observer.
Carthage, Nov. 3.—Election returns from this county to 10 o'clock to-night indicate that the county goes Democratic by an approximate majority of 100.

NASH

Special to The Observer.
Rocky Mount, Nov. 3.—Nash county gives Bryan 500 majority. Governor—Kitchin 1,800; Cox 1,900. The county goes Democratic by 500 to 700 majority.

NEW HANOVER

Special to The Observer.
Wilmington, Nov. 3.—Election returns from this county to 10 o'clock to-night follow: all precincts save one being heard from:

State Representative—Democrat 441; Republican 206.

Special to The Observer.
Statesville, Nov. 3.—In the election to-day Iredell votes practically 2,000 for Bryan; 1,760 for Taft. Kitchin 2,500; Cox 1,760. Hackett 2,500; Cowles 1,550. Hackett's majority of 940 is reduced about 200 in the county. The rest of the Democratic ticket has its usual majority. The vote was very full all over the county.

JACKSON

Special to The Observer.
Spartanburg, Nov. 3.—The Republicans elect sheriff; the rest of the county ticket and also the State and national being Democratic by a very small majority. The election was quiet.

JOHNSTON

Special to The Observer.
Smithfield, Nov. 3.—Johnston county elects a full Democratic ticket by a majority of 350 to 400. Very little scratching.

JONES

Special to The Observer.
Trenton, Nov. 3.—Returns up to 11 p. m. show Jones county has gone Democratic by a majority of about 300.

LEE

Special to The Observer.
Sanford, Nov. 3.—Election returns from Lee county to 9:30 p. m.:
President—Bryan 225; Taft 525.
Governor—Kitchin 550; Cox 500.
Lieutenant Governor—Newland 550; Toms 500.
Congressman—R. N. Page 550; Z. V. Walser 500.
State Senator—Democratic 550; Republican 500.

LENOIR

Special to The Observer.
Kinston, Nov. 3.—Lenoir county will give 650 Democratic majority. Kitchin will lead Bryan. There is an increased Taft vote over Roosevelt's vote.

LINCOLN

Special to The Observer.
Lincoln, Nov. 3.—Returns are hard to get here but the indications are that Lincoln county will go Democratic by 75 to 125 majority.

MACON

Special to The Observer.
Franklin, Nov. 3.—The election returns to 12 o'clock to-night are so incomplete that an enumeration of them would be misleading. The indications are that the county is very close, some of the county officers being Democrats and others Republicans. The same doubt exists as to State and national tickets.

MADISON

Special to The Observer.
Marshall, Nov. 3.—Taft carries Madison county by 300 majority. Smith wins over Webb by 800 majority. The Democrats make considerable gains on the county ticket.

MARTIN

Special to The Observer.
Williamston, Nov. 3.—Returns from Martin county complete are:
President—Bryan 1,331; Taft 421.
Governor—Kitchin 1,832; Cox 361.
Lieutenant Governor—Newland 1,360; Toms 360.
Congressman—Small 1,410; Meekins 312.
State Senators—Martin and Latham 1,462; Republicans 223.
State Representative—Stubbs 1,471; Green 322.

MCDOWELL

Special to The Observer.
Marion, Nov. 3.—State and presidential tickets are Democratic by about 100 majority. The congressional vote is close, the indications being that Crawford has a small majority. Price, Democrat, is chosen for Legislature by over 100 majority. The rest of the county ticket is in doubt and an official vote will be required.

MITCHELL

Special to The Observer.
Bakersville, Nov. 3.—The estimated Republican majority of Mitchell county is 1,600. The national ticket runs ahead.

MONTGOMERY

Special to The Observer.
Troy, Nov. 3.—Montgomery county goes Democratic from 50 to 100 majority. The entire county and legislative ticket is elected.

MOORE

Special to The Observer.
Southern Pines, Nov. 3.—Southern Pines precinct goes Democratic by 23 majority; county ticket: Sheriff, Democratic 48; Legislature, Democratic 42.

MURPHY

Special to The Observer.
Carthage, Nov. 3.—Election returns from this county to 10 o'clock to-night indicate that the county goes Democratic by an approximate majority of 100.

NASH

Special to The Observer.
Rocky Mount, Nov. 3.—Nash county gives Bryan 500 majority. Governor—Kitchin 1,800; Cox 1,900. The county goes Democratic by 500 to 700 majority.

NEW HANOVER

Special to The Observer.
Wilmington, Nov. 3.—Election returns from this county to 10 o'clock to-night follow: all precincts save one being heard from:

President—Bryan 1,371; Taft 52.
Governor—Kitchin 1,763; Cox 35.
Congressman—Godwin 1,151; Sherman 545.

Colombus gives 800 Democratic majority. Bladen 600. Cumberland 600 national.

ORANGE

Special to The Observer.
Hillsboro, Nov. 3.—Strayhorn, clerk of court; Andrews, sheriff; Laws, register of deeds; Democrats are elected by majorities of from 100 to 200. The balance of the ticket is probably Republican by a small majority.

PASQUOTANK

Special to The Observer.
Elizabeth City, November 3.—Seven precincts in Elizabeth City give Bryan 691; Taft 148. Kitchin 830; Cox 95. S. N. Morgan, Representative, 450; W. H. Keaton, Jr., County officer, 430; Democrats, 103. Estimated majority for Bryan 600, 200 Small 700.

PERQUIMANS

Special to The Observer.
Hertford, Nov. 3.—Election returns from this county to 8:30 o'clock to-night follow:
President—Bryan, 200 majority.
Governor—Kitchin, 200 majority.
Lieutenant Governor—Newland, 200 majority.
Congressman—Small, 200 majority.
State Senators—Johnson and A. A. Godwin, 100 majority.
State Representatives—Ernest L. Reed, 100 majority.
Perquimans goes Democratic by an approximate majority of 200. Five out of six precincts heard from.

PENDER

Special to The Observer.
Wilmington, Nov. 3.—Fender gives the entire Democratic ticket between 600 and 700. Thomas and Day about 600.

PIET

Special to The Observer.
Greenville, N. C., Nov. 3.—Greenville precinct gives Small for Congress 428, Meekins 102. If this vote holds throughout the county Small's majority in Pitt will reach 1,000. A heavy vote was polled in all precincts counting will be slow. Pitt's majority for the entire ticket will be between 1,000 and 2,000.

POLK

Special to The Observer.
Tryon, Nov. 3.—Polk county goes Democratic by an approximate majority of 180, with the exception of county treasurer, the Republican candidate being elected by a small majority. Grant runs ahead of Crawford also by a small majority.

RANDOLPH

Special to The Observer.
Asheboro, Nov. 3.—The county goes safely Democratic from 200 to 250 majority at least, an increase over two years ago.

RICHMOND

Special to The Observer.
Asheboro, Nov. 3.—A conservative estimate based on reports from eleven precincts out of twenty-one elects the entire Democratic ticket by a small majority, probably by 50 majority.

ROCKINGHAM

Special to The Observer.
Rockingham, Nov. 11.—Rockingham county returns are not all in. The county goes Democratic by a majority of 400 to 500.

ROBESON

Special to The Observer.
Maxton, Nov. 3.—Election returns from this precinct to 9 o'clock to-night follow:
President—Bryan 217; Taft 15.
Governor—Kitchin 334; Cox 12.
Lieutenant Governor—Newland 334; Toms 12.
Congressman—Godwin 220; Sherman 12.

SANDHURST

Special to The Observer.
Leaksville, Nov. 3.—J. M. Morehead's majority in Leaksville precinct is 220; Kitchin's majority two years ago was 60.

SHERIFF

Special to The Observer.
Heldville, Nov. 3.—Returns to midnight to-night indicate that Bryan and Kitchin have carried the county by small majorities. Brooks running about 50 votes behind. The Republicans have elected the county ticket.

SPENCER

Special to The Observer.
Spencer, Nov. 3.—Spencer gives Hackett, Democratic, 128; Cowles, Republican, 67; Stewart, Socialist, 15; for Congress.

STATE REPRESENTATIVE

Special to The Observer.
China Grove, Nov. 2.—Election returns from this township to 8:15 o'clock to-night follow:
State Senator—Kluttz, 216; Ramsey, 123.
State Representatives—Julian and Carlton, 215 each; Albright and Roseman, 215 each.

STATE SENATOR

Special to The Observer.
China Grove, Nov. 2.—Election returns from this township to 8:15 o'clock to-night follow:
President—Bryan, 212; Taft, 225.
Governor—Kitchin, 215; Cox, 225.
Lieutenant Governor—Newland, 215; Toms, 225.

STATE SENATOR

Special to The Observer.
China Grove, Nov. 2.—Election returns from this township to 8:15 o'clock to-night follow:
President—Bryan, 212; Taft, 225.
Governor—Kitchin, 215; Cox, 225.
Lieutenant Governor—Newland, 215; Toms, 225.

STATE SENATOR

Special to The Observer.
China Grove, Nov. 2.—Election returns from this township to 8:15 o'clock to-night follow:
President—Bryan, 212; Taft, 225.
Governor—Kitchin, 215; Cox, 225.
Lieutenant Governor—Newland, 215; Toms, 225.

STATE SENATOR

Special to The Observer.
China Grove, Nov. 2.—Election returns from this township to 8:15 o'clock to-night follow:
President—Bryan, 212; Taft, 225.
Governor—Kitchin, 215; Cox, 225.
Lieutenant Governor—Newland, 215; Toms, 225.

STATE SENATOR

Special to The Observer.
China Grove, Nov. 2.—Election returns from this township to 8:15 o'clock to-night follow:
President—Bryan, 212; Taft, 225.
Governor—Kitchin, 215; Cox, 225.
Lieutenant Governor—Newland, 215; Toms, 225.

STATE SENATOR

Special to The Observer.
China Grove, Nov. 2.—Election returns from this township to 8:15 o'clock to-night follow:
President—Bryan, 212; Taft, 225.
Governor—Kitchin, 215; Cox, 225.
Lieutenant Governor—Newland, 215; Toms, 225.

STATE SENATOR

Special to The Observer.
China Grove, Nov. 2.—Election returns from this township to 8:15 o'clock to-night follow:
President—Bryan, 212; Taft, 225.
Governor—Kitchin, 215; Cox, 225.
Lieutenant Governor—Newland, 215; Toms, 225.

STATE SENATOR

Special to The Observer.
China Grove, Nov. 2.—Election returns from this township to 8:15 o'clock to-night follow:
President—Bryan, 212; Taft, 225.
Governor—Kitchin, 215; Cox, 225.
Lieutenant Governor—Newland, 215; Toms, 225.

STATE SENATOR

Special to The Observer.
China Grove, Nov. 2.—Election returns from this township to 8:15 o'clock to-night follow:
President—Bryan, 212; Taft, 225.
Governor—Kitchin, 215; Cox, 225.
Lieutenant Governor—Newland, 215; Toms, 225.

STATE SENATOR

Special to The Observer.
China Grove, Nov. 2.—Election returns from this township to 8:15 o'clock to-night follow:
President—Bryan, 212; Taft, 225.
Governor—Kitchin, 215; Cox, 225.
Lieutenant Governor—Newland, 215; Toms, 225.

STATE SENATOR

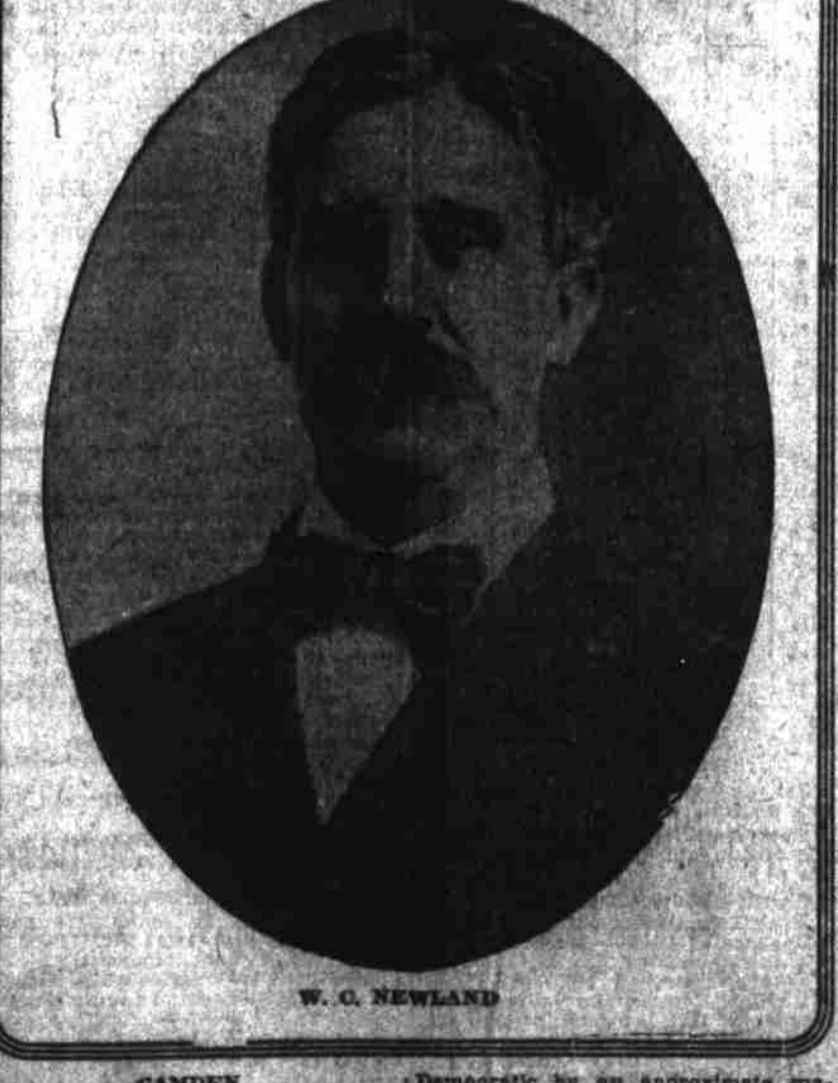
Special to The Observer.
China Grove, Nov. 2.—Election returns from this township to 8:15 o'clock to-night follow:
President—Bryan, 212; Taft, 225.
Governor—Kitchin, 215; Cox, 225.
Lieutenant Governor—Newland, 215; Toms, 225.

STATE SENATOR

Special to The Observer.
China Grove, Nov. 2.—Election returns from this township to 8:15 o'clock to-night follow:
President—Bryan, 212; Taft, 225.
Governor—Kitchin, 215; Cox, 225.
Lieutenant Governor—Newland, 215; Toms, 225.



W. W. STITHIN.



W. C. NEWLAND