

HUNGRY WOMEN BESIEGE NEW YORK CITY HALL



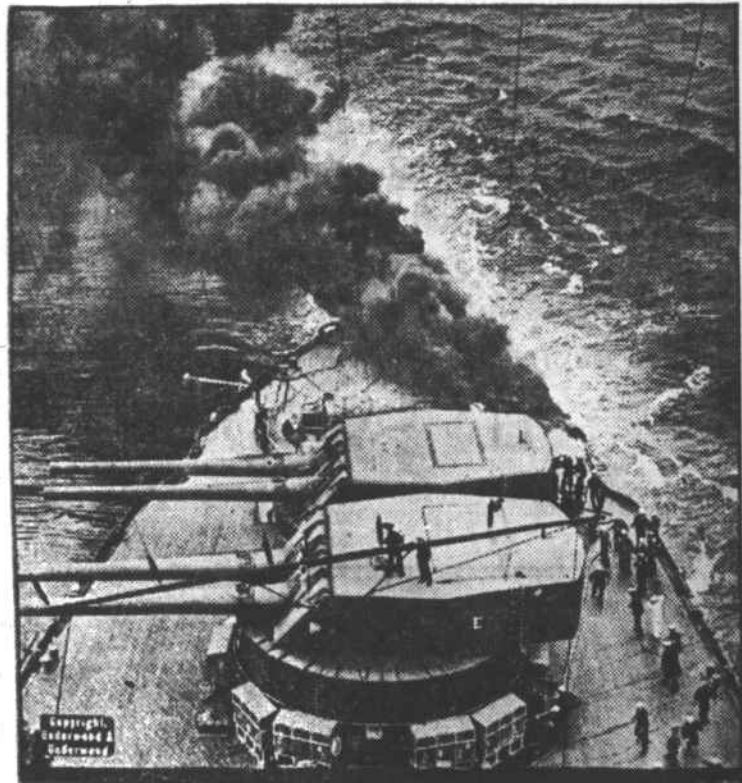
Scene at New York city hall showing the food rioters, nearly all women, mounting the steps in their effort to see Mayor Mitchell. The first of the police reserves have arrived and are stopping the first rush. Thousands of women from the East side and other sections of the city opened a crusade against the high cost of living and started by raising push-cart peddlers who had raised their prices. They then marched in a disorderly body to the city hall to enlist the mayor's aid in their fight against the rising cost of necessities.

IVERNIA SURVIVORS AFLOAT ON A RAFT



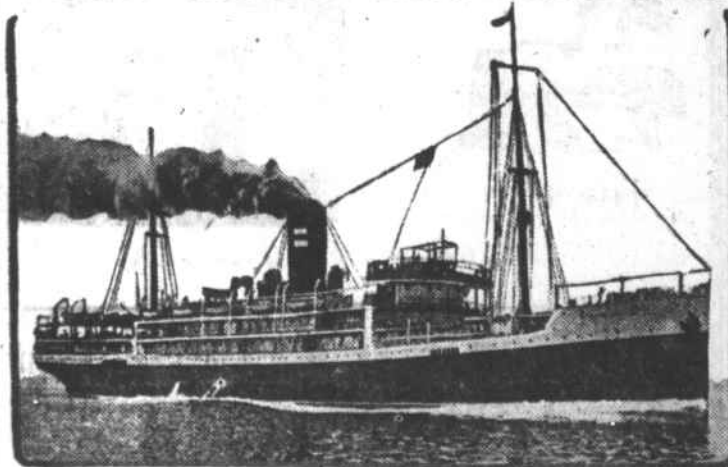
Crowded together on this small raft, these survivors of the transport Ivernia faced the Mediterranean in her roughest mood before a trawler came along and rescued them. The Ivernia, a Cunard liner of 14,000 tons, was sunk by a submarine in the Mediterranean recently while carrying troops. One hundred and fifty-three men, including 33 members of the crew, perished. The last man to leave the ship was the skipper, Capt. William T. Turner, who commanded the Lusitania when she, too, was torpedoed by a German submarine.

FIRE ON BATTLESHIP IN MIDOCEAN



Blaze on the battleship Wyoming at sea which was quickly extinguished by the perfectly trained crew. Each man rushed to his arranged station, the water compartments were closed and preparations made to flood the magazines if necessary.

STEAMER THAT WILL BRING GERARD HOME



It is expected that Ambassador Gerard and his suite will come back to America on this steamer, the Infanta Isabel, a Spanish liner.

Couldn't Do It.
Fussy Woman (in crowded car, to shabby man)—I wish you'd throw up a window.
Shabby Man (with a grin)—I'd like to accommodate you, mum, but I ain't swallowed one.—Town Topics.

Beginning of the End.
Heine—Is Parker a friend of yours?
Omar—I always thought he was until about an hour ago.
Heine—Why the change of opinion?
Omar—He refused to lend me a quarter.

POSTSCRIPTS

Using a special form of stoker and grate a German power plant is making steam with cinders from locomotives. Mica stereopticon slides have been invented, resisting heat better than glass ones and being less easily broken. A New York newspaper man is the inventor of a machine with a standard typewriter keyboard that sets type from which facsimile letters can be printed, the type being automatically distributed afterward.

An American has obtained a Cuban patent for a machine that cultivates growing sugarcane, work that heretofore has had to be done by hand.
China uses a native plant—a grass with tenacious roots that resist erosion—to protect railway embankments from the floods prevalent in the country.
The Italian government is experimenting with sericulture in Libya, which produces many mulberry trees, on the leaves of which silkworms can be fed.

REPAIR FLOOD DAMAGE

Big Dam Held Water During Flood and Submerged Power House.—Repair Work in Progress.

Newton.—Seven months after the July flood smashed through the high river bluff at the western end of the great Lookout dam on the Catawba River the work of repairing the vast damage is still far from finished and contractors are moving a mountain of earth into the gorge of the new channel of the stream. Steam shovels are digging away the adjacent hill and dinky railroads carry the dirt to trestles spanning the tremendous cut. Although the water has been blocked from the new channel and has risen in the dam until sufficient height has been attained to generate considerable power in the power-house, it will be months before the great plug in the leak is completed. An interesting feature of the engineer's plans is the blasting away of as much as five feet of the concrete dam, all along the crest from one side of the river to the other. The dam is 86 feet high and it held water during the flood until the power house itself was submerged and flooded. The blasting away of the crest, it is supposed, is to obviate that trouble in case another deluge comes.

Mad Dogs Do Damage in Cleveland, Shelby.—A mad dog scare has aroused the community to the extent that letters are going to Representative W. A. Mauney, at Raleigh, asking him to strengthen his dog tax law if it is not already strong enough to protect the lives of people and the loss of property. During one night Hackett, Wilson, son of Mr. and Mrs. James A. Wilson, who lives on the Cleveland Springs road, was bitten on the hand by the Wilson shepherd dog, a calf was attacked, 14 other dogs were bitten, in addition to a hog, several pigs and a number of chickens. It is thought several mad dogs are at large. Mr. Wilson not being convinced that his dog was mad, had it killed as a safeguard and sent its head to the Bureau of Animal Industry at Washington for analysis. Chief Jetton has killed a number of suspicious looking dogs.

Dr. R. M. Gidney, farm demonstrator says that over \$500 worth of livestock has been killed as a result of the mad dog rampage since the first of the year. Three patients have had to go to Raleigh to take the Pasteur treatment, fearing infection from hydrophobia, since the first of January.

Riddick Formally Made President. Raleigh.—Wallace Carl Riddick was impressively inducted to the office of president of the North Carolina College of Agriculture and Mechanic Arts, succeeding Dr. D. H. Hill, who has for six months been devoting his energies and talents to the preparation of "The History of North Carolina's Part in the Civil War."

The ceremonies were most successful and inspiring, opening with the academic procession consisting of 11 divisions, and including college faculty, student body, alumni, state officers, trustees, delegates from societies, from universities and colleges the country over, and the staffs of the State Department of Agriculture and Experiment Station and Extension Service.

NORTH CAROLINA BRIEFS.

The will of the late A. J. Yorke, of Concord, was probated last week. The estate was estimated to be worth \$350,000.
The Woodmen of the World in North Carolina are planning to erect an orphanage at some city along the North Carolina coast, the selection is to be made at the head camp to be held Newbern on March 12-15, and there is every reason to believe that New Bern will land this institution.
It was announced at Charlotte by the Southern Power Company that contracts have been let for the immediate construction of a hydro-electric plant at Wateree, S. C. at a cost of approximately \$6,000,000. According to the announcement the plant is to be completed by November 1, 1918. It will develop 100,000 horsepower.
The body of a young man, who probably froze to death, was found in Watauga county last week.
The Mebane tobacco market has closed for the season. 2,000,500 pounds were sold during the year.
Bost's school house in the southwestern section of Catawba county, was destroyed by fire, supposedly catching from the flue. Nobody was around, it is said. Only a short time ago new desks were placed at considerable expense and these and everything else in the building were burned. This is the second time the Bost school has lost its building by fire.
Many blocks of concrete sidewalks and sheet asphalt streets are being put down in Monroe.
The Davie county commencement will be held at Mocksville, April 7th.
A woman's section of the Navy League is being organized in Rowan county as an adjunct to the Red Cross, with Mrs. E. C. Gregory and Miss Mary Henderson having charge of extending the organization.
Seaboard officials will be invited to Wilmington in the early future and asked to explain why better schedules have not been inaugurated between Wilmington and Charlotte, as was promised by General Manager Lake at the Charlotte conference recently held.

Fire of unknown origin completely destroyed a big cotton gin at Mooresville last week.
All cabbage, onions, mustard and turnips planted in Union county are dead. Many people raise an excellent winter garden in this county and this is the first winter in many years that the gardens were totally destroyed.
The executive committee of the State Bar Association selected Wrightsville Beach as the place for the next meeting in June, the exact dates to be fixed by the president and secretary of the association.

LATE NORTH-CAROLINA MARKET QUOTATIONS

Western Newspaper Union News Service
Prices Paid by Merchants for Farm Products in the Markets of North Carolina as Reported to the Division of Markets for the Week Ending Saturday, February 24, 1917.

Durham.
Corn, \$1.15 bu; oats, 68c bu; peas, \$3 bu; Irish potatoes, \$6.50 bbl; sweet potatoes, \$1.10 bu; apples, \$4-\$5 bbl.
Cotton, middling, 15.50c.
Western butter, 40c lb; N. C. butter, 40c lb; eggs, 35c doz; spring chickens, 20c lb; hens, 12c lb.

Fayetteville.
Corn, \$1.25 bu; oats, 72½c bu; soy beans, \$1.50 bu; peas, \$2 bu; Irish potatoes, \$7 bbl; sweet potatoes, 75c bu.
Cotton, middling, 16c; cotton seed, 85c bu; lbs. of meal for ton of seed, 2500.
Western butter, 40c lb; N. C. butter, 40c lb; eggs, 30c doz; spring chickens, 20c lb; hens, 15c lb; hogs, \$10 cwt.

Greensboro.
Corn, \$1.20 bu; oats, 73c bu; soy beans, \$2.25 bu; peas, \$2.25 bu; Irish potatoes, \$7.50 bbl; sweet potatoes, \$1 bu; apples, \$6.50 bbl.
Cotton, middling, 16.75c; cotton seed 85c bu.

Greenville.
Corn, \$1.20 bu; oats, 70c bu; soy beans, \$2 bu; peas, \$2.25 bu; Irish potatoes, \$6 bbl; sweet potatoes, 75c bu.
Cotton, middling, 16c; cotton seed, 85c bu.

Maxton.
Corn, \$1.20 bu; peas, \$2.25 bu; Irish potatoes, \$6 bbl; sweet potatoes, 75c bu.
Cotton, middling, 15.75c; cotton seed 70c bu.
Western butter, 40c lb; N. C. butter, 40c lb; eggs, 30c doz; spring chickens, 20c lb; hens, 14c lb; hogs, \$11 cwt.

Monroe.
N. C. butter, 40c lb; eggs, 30c doz.
Corn, \$1.30 bu; oats, 72c bu; peas, \$2.50 bu; Irish potatoes, \$6 bbl; sweet potatoes, \$1 bu.
Cotton, middling, 17.15c; cotton seed 65c bu.

Raleigh.
Corn, \$1.23 bu; oats, 68c bu; soy beans, \$2-\$2.25 bu; peas, \$1.75 bu; Irish potatoes, \$8 bu; sweet potatoes, 90c bu; apples, \$4.50-\$7 bbl.
Cotton, middling, 16c; cotton seed, 78c bu; lbs. of meal for ton of seed, 2800.
Western butter, 42c lb; N. C. butter, 40c lb; eggs, 38-40c doz; spring chickens, 18½c lb; hens, 16c lb; hogs, \$10 cwt.

Rocky Mount.
Corn, \$1.22 bu; oats, 70c bu; Irish potatoes, \$6 bbl; sweet potatoes, 80c bu.
Cotton, middling, 15.50c; cotton seed 78c bu; lbs. of meal for ton of seed, 2600.
Western butter, 40c lb; N. C. butter, 40c lb; eggs, 38-40c doz; spring chickens, 15c lb; hogs, \$11.50 cwt.

Scotland Neck.
Corn, \$1.15 bu; oats, 72c bu; Irish potatoes, \$6.75 bbl; sweet potatoes, 80c bu.
Cotton, middling, 15.50c; cotton seed 8c bu; lbs. of meal for ton of seed, 2500.
Western butter, 40c lb; N. C. butter, 40c lb; eggs, 35c doz; spring chickens, 21c lb; hens, 12½ lb; hogs, \$12.50 cwt.

Wilmington.
Corn, \$1.17 bu; oats, 70c bu; Irish potatoes, \$6.50 bbl; sweet potatoes, 80c bu.
Western butter, 40c lb; N. C. butter, 45c lb; eggs, 34c doz; spring chickens, 15c lb; hens, 13c lb; hogs, \$11 cwt.

Winston-Salem.
Corn, \$1.15 bu; oats, 75c bu; Irish potatoes, \$5.10 bbl; sweet potatoes, 80c bu; apples, \$4.50 bbl.
N. C. butter, 42c lb; eggs, 30c doz; spring chickens, 15½c lb; hens, 13½c lb; hogs, \$12.50 cwt.

Chicago, Ill.
No. 2 White corn \$1.02 (delivered in Raleigh \$1.17); No. 2 yellow corn, \$1.02½-\$1.00½ (delivered in Raleigh, \$1.17½-\$1.15½-\$1.15½).
Butter, 32-42c (creamery); eggs, 39-41½c (firsts).

New York.
Irish potatoes, \$10-\$10.50 bbl; sweet potatoes, \$1-\$2 (Jersey basket).
Butter, 42½-46½c (extra); eggs, 48-48c (extra fine).
40c lb.
Eggs, 30c doz; spring chickens, 15c lb; hens, 50c each; hogs, \$12.50 cwt.

Pineapple Custard Pie.
Won't someone please try my pineapple custard pie? It is delicious. I used the pineapple that I canned. Shred thoroughly ripe pineapples until you have two cupfuls; add one cupful granulated sugar and the yolks of four eggs, well beaten. Stir in a pint of milk which has been scalded—not boiled—and which has been allowed to cool; then add the whites of eggs beaten stiff and stir all thoroughly. Put the pastry on tin plates and bake until the crusts are rich and brown.—Boston Globe.

Turkish Dish.
Stew one cupful of cold lamb with one teaspoonful of minced onion in one cupful of water until very tender. Skim out the meat and add to the water enough strained tomato to make one pint, or use more water if you have not enough of the tomato. Season highly with salt and pepper and a little curry or chutney sauce.

Restoring Color.
When the color has been taken out of black goods it may be restored by the application of liquid ammonia.

CHOWAN MOTOR COMPANY.
Passenger—Mail—Express
Daily Except Sundays.
No Steamer on Sundays.
Lv. Murfreesboro ... 7:50 am—1:10 pm
Lv. Como-Mapleton. 8:10 am—1:30 pm
Lv. Sears Wharf ... 8:40 am—2:00 pm
Lv. Winton ... 9:50 am—3:00 pm
Ar. Tunis ... 10:10 am—3:20 pm
Lv. Tunis ... 10:40 am—6:05 pm
Lv. Winton ... 11:00 am—6:25 pm
Lv. Sears Wharf ... 12:05 pm—7:25 pm
Lv. Mapleton-Como. 12:35 pm—7:50 pm
Ar. Murfreesboro ... 1:00 pm—8:15 pm
URIAH VAUGHAN, Mgr.

WELLINGTON AND POWELLVILLE RAILROAD.
SOUTH.
No. 1—Leave Washington (R. F. & P. R. R.) 4:30 a. m.; leave Richmond (A. C. L.) 8:15 a. m.; leave Weldon (A. C. L.) 11:25 a. m.; leave Wilmington (A. C. L.) 7:40 a. m.; leave South This November 23rd, 1914.
Rocky Mount (A. C. L.) 12:55 p. m.; arrive Ahoskie (A. C. L.) 2:43 p. m.; leave Norfolk (A. C. L.) 3:40 p. m.; leave Suffolk (A. C. L.) 5:05 p. m. Arrive Ahoskie 6:15 p. m.
Wellington & Powellville R. R.
No. 1—Leave Ahoskie 6:25 p. m.; leave Powellville 6:39 p. m.; leave Cremona (Branding) 6:53 p. m.; leave Holly Grove 6:58 p. m.; leave Askewville 7:00 p. m.; arrive Windsor 7:30 p. m.

Steamer.
Passenger—Leave Windsor 2:30 p. m.; leave Howard 3:30 p. m.; leave Steels 3:45 p. m.; leave Blanchesards 4:45 p. m.; leave Sans Soucie 5:15 p. m.; arrive Plymouth 6:30 p. m.
NORTH.
Steamer.
Passenger—Leave Plymouth 7:00 a. m.; leave Sans Soucie 8:30 a. m.; leave Blanchesards 9:00 a. m.; leave Steels 10:00 a. m.; leave Howard 10:30 a. m.; arrive Windsor 11:00 a. m.
Wellington & Powellville R. R.
No. 2—Leave Windsor 8:50 a. m.; leave Butler's 9:02 a. m.; leave Askewville 9:17 a. m.; leave Holly Grove 9:23 a. m.; leave Cremona (Branding) 9:29 a. m.; leave Powellville 9:41 a. m.; arrive Ahoskie 9:56 a. m.

A. C. L.
No. 2—Leave Ahoskie 11:06 a. m.; leave Suffolk 12:21 noon; arrive Norfolk 1:35 p. m.; leave Ahoskie 10:50 a. m.; leave South Rocky Mount 12:50 noon; arrive Wilmington 6:50 p. m.; leave Weldon 5:00 p. m.; leave Richmond 7:45 p. m.; arrive Washington (R. F. & P. R. R.) 11:50 p. m.
Connections—No. 1 with A. C. L. R. R.; No. 2 with steamer line, with A. C. L. R. R. and Norfolk Southern Ry.
Horton Corwin, Jr., President and Treasurer, Edenton, N. C.
W. O. Pruden, Secretary, Edenton, N. C.
R. C. Holland, Auditor, Edenton, N. C.
R. G. White, T. A. Edenton, N. C.
W. M. Corwin, Supt. Ahoskie, N. C.
W. M. Sutton, Gen. Frt. and Pass. Agt., Windsor, N. C.

Printing
Are You in Need of
Tags
Cards
Blanks
Folders
Dodgers
Receipts
Envelopes
Statements
Bill Heads
Invitations
Packet Heads
Letter Heads
Call at this office

Good Work Is Our Specialty

Do You
Use Good Paper When You Write?
We Can Print Anything and Do It Right.

You May Talk to One Man
But an advertisement in this paper talks to the whole community.
Catch the Idea?

TRAVEL VIA ALBEMARLE STEAM NAVIGATION COMPANY
Plying on the Queen of North Carolina Streams, the CHOWAN RIVER, also on MEHERRIN, BLACKWATER RIVER, BENNETTS and WICOCON CREEKS, and the ALBEMARLE SOUND.

Two Big Steel Steamers Carolina and Virginia

STEAMER VIRGINIA.
From Franklin, Va., Mondays and Fridays. For Tunis, N. C. and intermediate points.
From Tunis, N. C. Thursdays and Saturdays. For Franklin, Va., and intermediate points.
From Tunis, N. C., to Harrellville, N. C., and return two days a week.
From Tunis, N. C., to Gateville, N. C., and return one day a week.

STEAMER CAROLINA.
From Murfreesboro, N. C., Mondays, Wednesdays and Fridays, for Tunis, N. C., and Edenton, N. C., and intermediate points.
From Edenton, N. C., Tuesdays, Thursday and Saturdays, for Tunis and Murfreesboro, N. C., and intermediate points.

For Further Information, Apply to
W. M. SCOTT, General Passenger Agent,
Franklin, Virginia.

YOUR AD
In This Space
Will Increase
Your Business