

The Ladies' Outfitter

To Women, Misses and Children

DRY GOODS, NOTIONS and FINE MILLINERY

Buy your Fall and Winter Wearings from us.

Pony Skin Coat going down —\$84.00 today.

In Asheville Churches

(All changes of church notices must be received prior to 10 a. m. Saturday.)

All Souls' church, Biltmore, Rev. R. R. Swope, D. D., rector—Sunday school at 10 a. m.; morning service and sermon at 11 o'clock; evening at 8 o'clock; 5:45 organ recital. All seats free; visitors are cordially welcome.

Biltmore Baptist church, Rev. F. A. Clarke, pastor—Sunday school at 10 o'clock; J. M. Brookshire, superintendent; preaching every Sunday at 11 a. m. and 8 p. m.; the public cordially invited to attend.

The Methodist Protestant church services in Y. M. C. auditorium. Rev. J. S. Williams, pastor—Sunday school 9:45 a. m.; preaching at 11 a. m. and 8 p. m.; morning subject, "Fasting"; evening subject, "Are You Saved?" A cordial welcome to all.

Trinity Episcopal church, Church and Willow streets, Rev. W. G. McCready, D. D., pastor—8 a. m. Holy communion, 11 a. m. morning prayer, ante-communion and sermon; 8 p. m. evening prayer and sermon; 9:45 a. m. Sunday school; 4 p. m. St. John's Mission. Jarvis Buxton Memorial, East street, services and Sunday school.

Week Day Services—Wednesday, 11 a. m. intercessory service and lecture; Friday, 8 p. m. evening prayer.

All seats free at all services. The public cordially invited.

Oakland Heights Presbyterian church, Biltmore road, near Victoria, Rev. Clarence G. Reynolds, D. D., pastor—Preaching 11 a. m.; Dr. Reynolds' subject will be "The World Has Gone After Him." Sunday school, 9:45 o'clock; Prof. E. P. Childs, superintendent. No evening service. Take Biltmore car to Forest Hill. Visitors welcome.

First Baptist church, Rev. W. M. Vines, D. D., pastor—The pastor will preach at both hours. Services at 11 a. m. and 8 p. m. The subject of the morning sermon will be "The Christian Church in Modern Life," at the evening hour his subject will be "The Twentieth Century Fool." Sunday school at 9:30 a. m. A cordial invitation is extended to all these services.

Central Methodist church, Rev. G. T. Rowe, S. T. D., pastor—Sunday school at 9:45 a. m.; Frank M. Weaver, superintendent; Mrs. E. C. Chambers, superintendent of primary department; preaching at 11 a. m. and 8 p. m.; Epworth League at 7:30 p. m.; prayer meeting Wednesday at 8 p. m.

Orn Street Presbyterian church, near the corner of Southside Avenue and Italph street, Rev. E. Lysander Grau, pastor—Services every Sabbath

prayermeeting on Thursday night at 7:30. All are cordially invited to attend all these services. Visitors are always welcome.

Balm Grove Methodist church, Rev. R. E. Atkinson, pastor—Sunday school, 9:30 a. m., S. D. Hall, superintendent; preaching at 11 a. m. and 8 p. m.; Junior league at 3:30; Miss Ada Buttrick, superintendent; Sunday school 9:30 a. m., preaching 11 a. m. Praise service 3:00 p. m., preaching, 8 p. m.

The Salvation Army, Ensign and Mrs. Bouters and Lieutenant Hooper, officers in charge, hall 28 1/2 South Main street—Meetings every night at 8 o'clock, except Monday night; open meeting at 7:30; Sunday, Junior meeting at 2:30; open air at 2:30 and 7:30; salvation meeting at 8 o'clock; band of love meeting for children every Thursday afternoon at 3:30, No. 2 hall, 510 West Haywood street; meetings every Monday, Wednesday and Saturday nights at 7:30; Sunday, Junior meeting at 9:30; holiness meeting at 11 o'clock; Young People's League, 8:30; Salvation meeting at 8 o'clock; meeting every Wednesday afternoon for children at 3:30. Everybody cordially invited to attend these services. Their motto, "Holiness Unto the Lord."

Revival Services.

Special revival meetings are being held at Ellaha orphanage, four miles west of town, under a large tent. Services today at 2:30 and 7:30 p. m. Three services Sunday, 10:30, 2:30 and 7:30. Workers: Rev. John Kimbler of Newport, R. I., Charlie Douille of Providence, R. I., and a number of workers from this section. All are invited to attend these services. Lucius R. Compton, in charge.

St. John's Mission (Jarvis Buxton Memorial) East street. Week day services—10 a. m. Wednesday, intercessory service, 5 p. m. Friday evening prayer. All seats free at all services. The public cordially invited.

First Church of Christ, Scientist—While the new church is being erected, or until further notice, the congregation of First Church of Christ, Scientist, will hold services up stairs in the Auditorium every Sunday morning at 11 o'clock, and the testimonial meetings Wednesday evenings at 8:15. Sunday school 9:45 a. m.; reading room adjoining open morning and afternoon. All are cordially welcome to services and reading room.

West Asheville Methodist church (corner of J. C. Prince, A. B., pastor—9:20 a. m., Sunday school; 9:45 a. m.; baptizing; 11 a. m., preaching by the pastor; 3 p. m., preaching by Rev. H. T. Ashe, and holy communion; 8:30 p. m., preaching by the pastor.

Berry Temple Methodist Episcopal church, Rev. J. C. Prince, A. B., pastor—11 a. m., sermon by Rev. P. Deberry of Thebes, Ga.; 8:30 p. m., sermon by the pastor. Good music for the occasion. Strangers and friends are welcomed.

Calvary Presbyterian church (col.), Rev. C. B. Dusenberry, D. D., pastor—Preaching every Sunday at 11 a. m. and 8 p. m.; Sabbath school at 4 p. m., and Christian Endeavor at 4.

North Asheville Methodist church, Rev. G. G. Herley, pastor—Sunday school, 9:30 a. m.; J. H. Weaver, superintendent; preaching at 11 a. m. and 8:30 p. m.; Junior league at 3 p. m.; prayer meeting with Senior League Wednesday, 8:30 p. m.; choir practice, Friday 8:30 p. m.

Grace Memorial church—Sunday school, 10 o'clock; morning services every Sunday at 11 o'clock except the third Sunday of the month; afternoon service every Sunday at 4 o'clock; take Merrimon avenue car.

Bethel Methodist church, Rev. J. D. Arnold, pastor—Sunday school 9:45 a. m.; preaching 11 a. m. and 7:45 p. m.

Riverside Circuit Methodist churches, Rev. A. E. Harrison, pastor—Preaching at Elk Mountain first and third Sundays 11 a. m.; Sunday school every Sunday 10 a. m.; Riverview, second and fourth Sundays 11 a. m.; Sunday school every Sunday 11 a. m.; Riverside, every Sunday, 7:30 p. m.; Sunday school every Sunday 3:00 p. m.

St. Lawrence's Catholic church, Rev. Father Marlon, rector—Masses daily at 7:30; Sunday, 8 a. m. and 11 a. m.

The Riverside Presbyterian Sabbath school meets in the basement of the West End Baptist church on West Haywood street, at 3 o'clock every Sabbath afternoon. Superintendent, W. E. Johnson; general superintendent, Rev. E. Lysander Grau. It has suitable departments and classes for all, old and young, and a welcome is assured to all.

Calvary Baptist church, West Asheville, Rev. Robert Percy Walker, pastor—Sunday school, 9:20 a. m.; J. L. Welch, superintendent; 11 a. m., sermon by pastor, subject: "Immortality"; 2:30 p. m., meeting of the B. Y. P. U.; Miss Mabel Morgan, president; 7:30 p. m., sermon by the pastor;

GRAVE INEQUALITY

FOR TAXING SYSTEM

(Continued from page 1.)

nues, and will in all probability continue to do so for the next fifty years.

"Under such circumstances the practical man, striving to improve the administration of public business," he continued, "will give his attention primarily to a consideration of methods of freeing the assessment and collection of that tax from the inequalities which now accompany it. Those inequalities are numerous and grave. Many townships can be found in the country in which a farm with a selling value of \$5000 is subject to the same tax as a second farm in another part of the township with a selling value of \$10,000; and the townships are legion, in number in which farm property is assessed at a different portion of its value from that assigned to forest land, and the property used for residential, manufacturing and other purposes."

Really Pays 75 Per Cent.

Mr. Powers insisted that the need for improving the methods of assessing real property was evidenced by the fact that for forty years at least 75 per cent. of the general property tax of the United States has been levied and collected upon realty. He said that although the proper listing and reporting of realty for purposes of taxation should be given greater consideration than is given to the corresponding listing of personalty; that such is nowhere the case.

"Some of the most intelligent people claim that the railroads are paying relatively only one-third as much tax as the farmers and lumbermen, and on the other hand, the railroads claim that they are paying as heavy a tax as the farmer, and that their burden of taxation is much greater relatively than that of the lumberman," continued Mr. Powers. "An analysis of the published reports of the state and comparisons of the data of such reports with reliable information obtainable from other sources alike fail to be conclusive as to the contention of any of the parties to this controversy."

"So long as this condition prevails, the state referred to will afford the dishonest firm or corporation a ready means for evading just taxation, and will find the subject of taxation and the administration of public service corporations are used by demagogues for the purpose of stirring up strife and agitation, without advocating the interests of any class of the people, or any industry in the community. All industries will continue to be more or less disturbed and subjected to unjust taxation, suspicion and annoyance."

Mr. Powers' Plan.

Mr. Powers outlined his idea of the method which should govern the listing of real property. The state should prepare a careful cadaster of all real estate, he said, this cadaster to show the acreage under cultivation, that covered with timber, with orchards, waste land and land which may be plowed. The classified list of acres should also show the number of acres of mineral land, of quarry land, and land valuable for oil, gas or other deposits. The cadaster should also show the number of acres of town lots subject to taxation. Mr. Powers added that the cadaster should be supplemented by a listing of the value of the property apart from the value of the land.

"When we have a classified listing of acre property that segregates areas and values according to the character of the land, and separately set forth the values of the improvements on every class of land, we will have the application of the analytical and statistical method to the taxation of realty," continued Mr. Powers. "We shall have as intelligent and as lucid a statement of acre property subject to taxation as some of our states now provide their citizens with reference to personal property subject to the tax. When such a listing is made, the farmers and other classes of citizens will have the data for determining approximately whether they are being taxed more than other classes and the people engaged in productive industries will know whether they are bearing burdens which should be shared but are not borne to an equal degree by the speculator."

Value of Correct Analysis.

"I am merely urging the application to taxation of the analytical and statistical methods which the business world has utilized in so many fields, and upon which it is relying in an ever-increasing measure as a guide for business administration," said Mr. Powers in concluding. "Correct analysis lies at the basis of all modern business success; and statistics based upon such analysis are playing an ever-increasing part in guaranteeing such success. In pleading for the use of a classified listing of real estate under heads that fully elucidate and set forth the character of the land and the amount of land of each specific class or character, I am urging the extension into the field of taxation of the method that has everywhere demonstrated its ability to make facts eloquent for equity, and to use them as a guide for the business man, the legislator and the statesman."

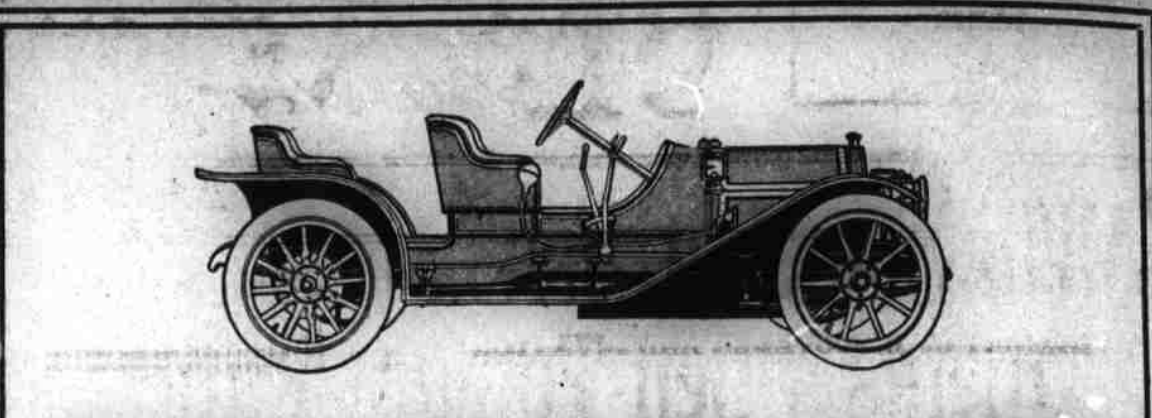
MR. POWERS' PLAN

Mr. Powers outlined his idea of the method which should govern the listing of real property. The state should prepare a careful cadaster of all real estate, he said, this cadaster to show the acreage under cultivation, that covered with timber, with orchards, waste land and land which may be plowed. The classified list of acres should also show the number of acres of mineral land, of quarry land, and land valuable for oil, gas or other deposits. The cadaster should also show the number of acres of town lots subject to taxation. Mr. Powers added that the cadaster should be supplemented by a listing of the value of the property apart from the value of the land.

"When we have a classified listing of acre property that segregates areas and values according to the character of the land, and separately set forth the values of the improvements on every class of land, we will have the application of the analytical and statistical method to the taxation of realty," continued Mr. Powers. "We shall have as intelligent and as lucid a statement of acre property subject to taxation as some of our states now provide their citizens with reference to personal property subject to the tax. When such a listing is made, the farmers and other classes of citizens will have the data for determining approximately whether they are being taxed more than other classes and the people engaged in productive industries will know whether they are bearing burdens which should be shared but are not borne to an equal degree by the speculator."

Value of Correct Analysis.

"I am merely urging the application to taxation of the analytical and statistical methods which the business world has utilized in so many fields, and upon which it is relying in an ever-increasing measure as a guide for business administration," said Mr. Powers in concluding. "Correct analysis lies at the basis of all modern business success; and statistics based upon such analysis are playing an ever-increasing part in guaranteeing such success. In pleading for the use of a classified listing of real estate under heads that fully elucidate and set forth the character of the land and the amount of land of each specific class or character, I am urging the extension into the field of taxation of the method that has everywhere demonstrated its ability to make facts eloquent for equity, and to use them as a guide for the business man, the legislator and the statesman."



Chalmers-Detroit "30"

The \$1,500 Car, Knipper Driving, WINS AT LOWELL

It won on Labor Day the classic Merrimac Valley Trophy, making 127 miles in 148 min., 43 sec., an average of 51 1-2 miles an hour, repeating the remarkable performance when it won the Western Vanderbilt (Indiana Trophy Race) making the 252 miles of that race in 271 minutes.

It may interest you to note that our stock "Forty," the \$2,750 car, in the 210 mile Vesper Club Trophy race, same day, led all the others, all the time, all the way, running away from the field, and was more than 14 miles ahead at 180 miles, which distance it made in 182 minutes—practically 60 miles an hour. With victory absolutely assured, Lorimer was obliged to ditch his car to avoid running into the crowd. Its performance was the sensation of the day. It led its nearest competitor by two laps, and broke every road record for a car of this class, and making by far the fastest laps of the race.

Chalmers - Detroit Stock Cars Won the Auto Classics of 1909

The Jericho Sweepstakes, the Indiana Trophy, The Santa Monica Road Race, The Minneapolis Tribune Trophy, The Brighton Beach Marathon, The Glidden Tour (Detroit Trophy.)

The series of other victories in speed trials, endurance contests, hill climbs, efficiency contests, etc., are a matter of public record. All these events were won by stock cars—the kind we sell you.

We Have Never Built a Racing Car

You should inspect our 1910 cars SOON. They are bigger, faster, handsomer than our famous 1909 cars. They are being purchased with a rapidity which is far ahead of all records.

We Have Sold Half Our 1910 Cars

Orders for delivery will be filled exactly in rotation. We have a delivery sheet which will show you just when you can get YOUR car. Isn't it better to place your order NOW and be SURE of getting a car just when you want it in the Spring?

Chalmers-Detroit Motor Company, DETROIT, MICHIGAN, U. S. A.

Asheville Cycle and Auto Co.,

PHONE 1310. 15 AND 17 S. LEXINGTON AVE.

NEW FALL SUITS IN ABUNDANCE

Now Is the Time to Buy

This is just the right time to do your purchasing, and the PEERLESS is just the right place, for besides the stock being complete in every respect, the prices are of the most tempting nature.

We pride ourselves on a beautiful selection of styles and the best and most wanted shades, and we hope you may at least look them over, for we know after doing so, you will also do your purchasing here. Alterations are made free of charge. Our suits are priced at

\$15.00, \$20.00, \$22.50, \$25.00 up to \$35.00

DAY OF ATONEMENT.

New York, Sept. 25.—The large Jewish population of New York, in common with the Jews throughout the world, engaged today in the observance of Yom Kippur, or Day of Atonement, the most important of all Jewish holidays. The holiday marks the end of the ten penitential days begun with "Roah Haashannah," or the Jewish New Year. These ten days are devoted by orthodox Jews to prayer and to settling their accounts with one another, for it is the ancient belief that all sins committed by Israel are forgiven on the day of atonement, but the wrongs committed by man against man do not receive Divine forgiveness unless attempts have been made to right these wrongs.

In all the Jewish calendar there is no occasion which is so solemn and so fraught with deep sentiment as the Day of Atonement. During the entire 24 hours observed no food or water passes the lips of the devout Hebrews. Even those who remain passive during the other 364 days of the year and who are seldom, if ever, seen in the house of worship, observe this day strictly. Beside the long fast, the day is devoted to prayers and other religious observances.

Its Troubles.

Chicago Tribune.

The family skeleton complained. "I wouldn't mind being exhibited once in a while," said the skeleton, articulating with difficulty through its set teeth, "but they air me so frequently in the courtroom, where the air is always notoriously bad."

But who ever thinks of looking at such exhibitions from the family skeleton's point of view?

WOULD HONOR DAVIS

Northern Paper Pleased for Stand Toward Confederacy's President.

Baltimore Sun.

"The inaudible and noiseless foot of time" has brought strange changes to this country. The statue of Robert E. Lee, the great Confederate chieftain, graces the Capitol of the United States, and now we have a New England newspaper suggesting that a statue of Jefferson Davis be placed by the State of Mississippi along with those of the two great Virginians, Washington and Lee. Says the New Haven Register:

"It is a century and a year since Jefferson Davis was born. It is near

to half a century since the cause was lost. It is twenty years since his death. What better time could there be to signify, by the placing of his statue in the nation's capitol, that the wounds of that war are healed, that standstill stand? There let his presentment stand, erect, noble, commanding, impressive, as he stood in the days when he was master of the destinies of half a nation."

It would be interesting to know how this suggestion and this tribute were received by the people of Connecticut who are the readers and supporters of the New Haven Register. It has not been many years since an article such as this published by a New England paper would have brought a mob upon it. Perhaps it takes some courage even at this day to do justice to Jefferson Davis in a northern state. Nevertheless, the Register has ventured it and proved that a great change has taken place, that truth and justice and peace are gaining ground.

Big Demonstration of "Drys."

Chicago, Sept. 25.—The two days' celebration held here in honor of the fortieth anniversary of the founding of the Prohibition party culminated

in a monster parade of temperance workers through the business section of the city this afternoon. Major General Frederick D. Grant headed the line, which was in twelve divisions and comprised a total of over 50,000 marchers, together with numerous floats. Nearly 1,000 Grand Army veterans were in line. Other divisions included representatives of the various churches, religious societies and prohibition organizations of Chicago and other cities of Wisconsin, Michigan and Illinois.

A CAR LOAD OF ASSORTED FRUIT

Just received, containing:

Concord Grapes 20c basket
Niagara Grapes 20c basket
Dela ware Grapes 20c basket
Bananas 10 to 15c doz.
Cocoanuts 10 to 15c doz.
Fancy Peaches, Sickle Pears, etc.	

CHARLIE MASCARI,
58 Patton Ave. Opp. Postoffice.
196-41