

MONARCH
QUALITY FOOD PRODUCTS

Get the standard. If you paid a dollar a pound you could not buy better food products than those you find packed under the Monarch label.

Reid, Murdoch & Co.
Established 1853
General Offices,
Chicago, Ill.

Urged to Cut Ablutions

In a proclamation urging strictest economy in the use of water, the municipality of Barmen, Germany, has suggested that the citizens eliminate their habitual morning bath. The city is suffering from a chronic shortage of water which of late has become more accentuated every day on account of increased production in the Barmen silk industry. As a large part of the working population of Barmen depends on the silk industry, it is impossible to cut down its water supply, the city fathers assert.

Garfield Tea
Was Your Grandmother's Remedy

For every stomach and intestinal ill. This good old-fashioned herb home remedy for constipation, stomach ills and other derangements of the system so prevalent these days is in even greater favor as a family medicine than in your grandmother's day.

Overdid Yawn

At Novato, Calif., Herbert Graham indulged in a prolonged and luxurious yawn. It was a complete success until Graham sought to close his jaws. He discovered they had locked. The victim managed to attract attention of others to his plight and he was taken to a hospital, where physicians restored the jaw to normal.

Kicked Into Learning

Who would be at the trouble of learning, when he finds his ignorance is creased? But when you browbeat and maul them you make them men; for, though they have no natural wit, yet if they are spurred and kicked they will mend their pace.—Jersey Collier.

Plenty of Them

"What kind of watch have you got?"
"A wonder watch."
"Wonder watch! Never heard of that before."
"Well, it's like this. Every time I look at it I wonder what time it is."

Guard Against "Flu" With Musterole

Influenza, Gripe and Pneumonia usually start with a cold. The moment you get those warning aches rub on good old Musterole.

Musterole relieves the congestion and stimulates circulation. It has all the good qualities of the old-fashioned mustard plaster without the blister.

First you feel a warm tingle as the healing ointment penetrates the pores, then a soothing, cooling sensation and quick relief. Have Musterole handy for emergency use. It may prevent serious illness.

To Mothers: Musterole is also made in milder form for babies and small children. Ask for Children's Musterole. Jars & Tubes.

Dr. J. D. Kellogg's ASTHMA REMEDY

No need to spend months, sleepless nights. Irritation quickly relieved and vent removed by using the remedy that has helped thousands of sufferers. 25 cents and \$1.00 at druggists. If unable to obtain, write direct to: **NORTON & S. J. MANN CO., Inc.**, Buffalo, New York. Send for free sample.

Weight of Air

Damp air weighs less than dry air. The dampness is due to the vapor of water in the air, and vapor of water is lighter than most of the other gases of the atmosphere.

COMPLEXION IMPROVED QUICKLY

Carter's Little Liver Pills

When there is a creep in the pasture for feeding grain to calves, lambs, or colts, it is a good plan to keep the salt box near the creep.

When soy beans are used properly as a supplement to corn the danger of soft port is practically eliminated, according to Purdue specialists.

Stinking is a very satisfactory way of storing soy bean hay. Soy beans will keep perfectly in the stack if thoroughly cured before being put up.

Best Treatment for Seed Grain
Copper Carbonate Favored for Preventing Smut of Wheat and Oats.

Copper carbonate is the best fungicide for preventing stinking smut of wheat and the smuts of hullless oats. Formaldehyde is the best fungicide for preventing smuts of hulled oats and covered smut of barley.

Formaldehyde should not be used for treating wheat. It prevents the covered smut, but it is likely to injure the seed severely, especially if the seed is dried after treatment, or sown in dry soil.

Copper carbonate does not prevent the smuts of hulled oats nor the covered smut of barley. It reduces the amount, but is not as effective as formaldehyde. Formaldehyde does not injure the seed of oats and barley and is therefore recommended.

Patent fungicides are not better than copper carbonate and formaldehyde. There are many patent fungicides now on the market, write E. C. Stakman and H. A. Rodenhiser in the Dakota Farmer.

How to Use Dust.

Get a good grade of fine, fluffy, copper carbonate. This light material is as effective as the more expensive heavier material. Any dust with a 20 per cent copper equivalent or more is satisfactory. Use two ounces of dust per bushel. If the seed is very badly smutted, use three ounces. For small quantities of seed mix the dust with the seed in an old barrel churn or a similar homemade device. Rotate the churn seven or eight times. This is long enough to mix the dust thoroughly. For treating large quantities of seed, it probably would pay to buy a smut machine. Treat the seed any time before sowing. Treat it now.

Marquis wheat seed need not be treated more than once every other year, because Marquis is somewhat resistant to stinking smut.

How to Use Formaldehyde.

There are three general methods—the dip, sprinkle and spray methods. For the first two, use one pint of formaldehyde to 50 gallons of water. Either dip the seed into this solution, or sprinkle the solution onto the seed by means of a sprinkling can, while one person chovels the seed over. In either case, one gallon of the solution will be enough for about 50 bushels of seed. After treatment, the seed should be sown as soon as possible, preferably while it is still moist, for the best results.

The advantage of the spray method is that it does not wet the seed. Mix one pint of formaldehyde with about a gallon of water and spray this onto the seed with a compressed air sprayer—not a sprinkler. Use exactly one pint of formaldehyde to 50 bushels of seed. It can even be used without water. The exact amount of water does not make any difference. It is used merely as a carrier for the formaldehyde to 50 bushels of seed. After treatment cover the seed with sack or canvas for five hours. Then sow immediately, or spread out to dry.

Various Tools Required for Handy Repair Shop

According to Arkansas College of Agriculture authorities, the farm shop will pay for itself many times in money and time saved. Care, however, should be exercised in choosing the equipment for the shop.

Woodworking tools should be chosen first. The following will make the basis for a good kit: a medium weight claw hammer, a 24-inch framing brace and bits of 1/4, 1/2, 3/4 and 1-inch in diameter. The above list of good quality can be bought for from \$10 to \$15. As needs demand the following tools may be added: 25 1/2 point rip saw, a 24-inch wrecking bar, a 24-inch level, a 1/2 and 3/4-inch wood chisel, and an 8-inch draw knife.

A very satisfactory wood for a bench vice can be made by using a 1-inch by 16-inch screw and using a well seasoned piece of hard wood for the vice face. For metal and pipe work a bench or leg type vice which has a removable set of pipe jaws will come in very handy.

Miscellaneous tools to be included very profitably are: a 14-inch pipe wrench, a 12-inch adjustable wrench, a 10-inch hack saw and a dozen extra blades, two cold chisels, a machine punch, a 2 1/2 pound ball peen hammer, a pair tin snips, and 1/4-inch, 3/8-inch and 1/2-inch drill bits, with square shanks.

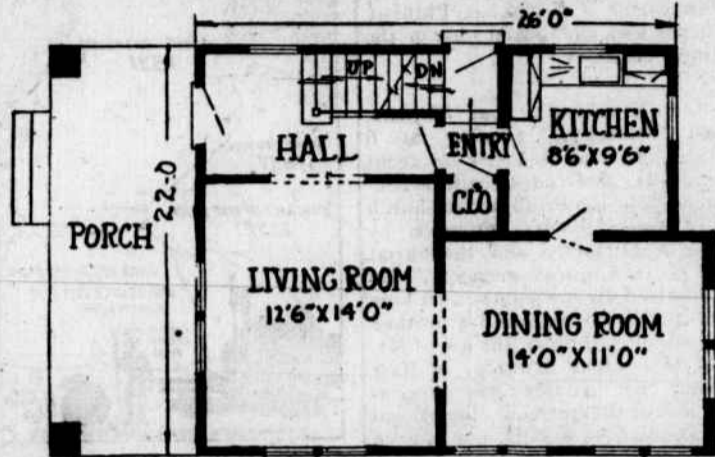
Agricultural Hints

When there is a creep in the pasture for feeding grain to calves, lambs, or colts, it is a good plan to keep the salt box near the creep.

When soy beans are used properly as a supplement to corn the danger of soft port is practically eliminated, according to Purdue specialists.

Stinking is a very satisfactory way of storing soy bean hay. Soy beans will keep perfectly in the stack if thoroughly cured before being put up.

Unusual and Attractive Effect in This Six-Room Dutch Colonial



By W. A. RADFORD

Mr. William A. Radford will answer questions and give advice FREE OF COST on all subjects pertaining to practical home building, for the readers of this paper. On account of his wide experience as editor, author and manufacturer, he is, without doubt, the highest authority on all these subjects. Address all inquiries to William A. Radford, No. 1527 Prairie avenue, Chicago, Ill., and only inclose two-cent stamp for reply.



A rather unusual but highly pleasing effect has been achieved in this design in the treatment of roof lines. The style is Dutch Colonial with the dormer to the front and the roof stucco, up to the second floor line, with shingles above and the result is thoroughly attractive. The foundation is low, adding to the solid effect and holding the structure well down to the ground. There is very little exterior ornament but the landscaping of the ground has been well handled and adds greatly to the effectiveness of the home.

This is a six room house which, because of its nearly square dimensions is quite roomy in proportion to its size, 22 feet wide by 26 feet deep. The arrangement is convenient throughout, and every room, with the exception of the bathroom, has windows on both sides affording excellent cross ventilation. A feature particularly worthy of note is the closet arrangement of two of the bedrooms. Each of these has a double closet, in reality two small closets, equipped with hangers which greatly increase the capacity of the closets and offers the most satisfactory means of caring for clothing.

A design of this type is so thoroughly standard that it assures a permanent resale value for the house. It also lends itself readily to modification to meet particular requirements. For example, many families would feel that a fireplace was an essential feature of the home. While no fireplace is shown in the plan, one might easily be added to the living room.

Fan Used in Heating System Gives Results

Discussing the value of a current of air in the home and the use of a fan in connection with the heating system, a writer in Building Age, after asking how valuable is a current of air, says: "By it the life stream is purified, health is restored to sick bodies and maybe even to sick souls—by it heat is carried from its point of origin to the place where it is wanted; noxious gases are dissipated; the new building is dried out ready for occupancy; the fumes of paint and varnish are driven away."

"Many a man has had the idea that a fan inserted somewhere in his heating system would change it from sluggishness into activity and give him better results for his fuel money. Some have tried it in a home-made way and secured results commensurate with the degree of care given to the installation. Then commercially-minded men set to work on the problem in a larger way and developed means for securing forced draft in the ordinary house-heating system to be controlled at will.

"Heating experts have found by experiment that fan-driven air in the furnace not only obtains more efficient combustion of fuel but gives better ventilation by circulating the air in all rooms and breaking up cold areas. These results can be secured, too, with the use of cheaper grades of fuel than would otherwise be required where only natural draft is used.

"The University of Michigan, which has been carrying on extensive tests in household heating under the leadership of Prof. J. E. Enswiler, has found that the fan blower is an important part of any modern heating system.

"While we cannot yet announce final results," said Professor Enswiler, "it is clear that one effect of the fan is to overcome the inertia and back-pressure of cold air in extra long ducts and leaders. Hence the equipment may be installed with heat pipes of much greater length than have been used in the past. This means that three-story houses are within the scope of this kind of warm-air heating plant, that it will heat a house of as many as 15 rooms comfortably and that it will keep even the more remote rooms of an ordinary dwelling at a pleasant temperature."

Dry Fillers Improve Walls of Old Home

Nearly all builders of new homes are now installing some one of the many materials which will insulate their homes against excessive heat and cold. They are doing this both to make their homes more comfortable in summer and winter, and to cut down fuel bills.

In these homes which are being built the types of insulators that can be used vary from the rigid or semi-rigid boards of cane-waste, wood fiber, cork or gypsum rock to the dry fillers of wood, mineral wool, cork or gypsum. But for the owner of the home already built who wants to install a material which will give him as much protection from weather as his neighbor who is building a new home, one of the dry fillers is the most practical material.

The standing house can be insulated by pouring a dry filler between the side walls. And if the rooms under the roof are used for living quarters, by installing an insulative material between the roof rafters. If, however, the attic is used for storage space the living quarters can be made comfortable by simply pouring the material between the joists of the attic floor, over the plaster of the ceilings below.

Storm Sash Urged to Keep Home Livable

Do not get the idea that in order to conserve heat in your house it is necessary only to build the walls soundly. The windows and doors lose much more heat than the walls. Everybody has noticed how in cold weather the wind blows in around the edges of the window. As the building ages the windows become more loose.

Cooling of the air in your rooms from this cause can be avoided by putting on approved weather stripping or well-fitted storm sash. The efficiency of both storm sash and weather stripping has been clearly shown. The effect of storm sash is more especially to save loss of heat across the window glass. Everybody knows that in very severe weather pulling down the shades will help to keep the rooms livable and that is the way the storm sash acts.

Storm Sash Urged to Keep Home Livable

Do not get the idea that in order to conserve heat in your house it is necessary only to build the walls soundly. The windows and doors lose much more heat than the walls. Everybody has noticed how in cold weather the wind blows in around the edges of the window. As the building ages the windows become more loose.

Cooling of the air in your rooms from this cause can be avoided by putting on approved weather stripping or well-fitted storm sash. The efficiency of both storm sash and weather stripping has been clearly shown. The effect of storm sash is more especially to save loss of heat across the window glass. Everybody knows that in very severe weather pulling down the shades will help to keep the rooms livable and that is the way the storm sash acts.

Storm Sash Urged to Keep Home Livable

Do not get the idea that in order to conserve heat in your house it is necessary only to build the walls soundly. The windows and doors lose much more heat than the walls. Everybody has noticed how in cold weather the wind blows in around the edges of the window. As the building ages the windows become more loose.

Cooling of the air in your rooms from this cause can be avoided by putting on approved weather stripping or well-fitted storm sash. The efficiency of both storm sash and weather stripping has been clearly shown. The effect of storm sash is more especially to save loss of heat across the window glass. Everybody knows that in very severe weather pulling down the shades will help to keep the rooms livable and that is the way the storm sash acts.

Storm Sash Urged to Keep Home Livable

Do not get the idea that in order to conserve heat in your house it is necessary only to build the walls soundly. The windows and doors lose much more heat than the walls. Everybody has noticed how in cold weather the wind blows in around the edges of the window. As the building ages the windows become more loose.

Cooling of the air in your rooms from this cause can be avoided by putting on approved weather stripping or well-fitted storm sash. The efficiency of both storm sash and weather stripping has been clearly shown. The effect of storm sash is more especially to save loss of heat across the window glass. Everybody knows that in very severe weather pulling down the shades will help to keep the rooms livable and that is the way the storm sash acts.

Storm Sash Urged to Keep Home Livable

Do not get the idea that in order to conserve heat in your house it is necessary only to build the walls soundly. The windows and doors lose much more heat than the walls. Everybody has noticed how in cold weather the wind blows in around the edges of the window. As the building ages the windows become more loose.

Cooling of the air in your rooms from this cause can be avoided by putting on approved weather stripping or well-fitted storm sash. The efficiency of both storm sash and weather stripping has been clearly shown. The effect of storm sash is more especially to save loss of heat across the window glass. Everybody knows that in very severe weather pulling down the shades will help to keep the rooms livable and that is the way the storm sash acts.

Storm Sash Urged to Keep Home Livable

Do not get the idea that in order to conserve heat in your house it is necessary only to build the walls soundly. The windows and doors lose much more heat than the walls. Everybody has noticed how in cold weather the wind blows in around the edges of the window. As the building ages the windows become more loose.

Cooling of the air in your rooms from this cause can be avoided by putting on approved weather stripping or well-fitted storm sash. The efficiency of both storm sash and weather stripping has been clearly shown. The effect of storm sash is more especially to save loss of heat across the window glass. Everybody knows that in very severe weather pulling down the shades will help to keep the rooms livable and that is the way the storm sash acts.

Storm Sash Urged to Keep Home Livable

Do not get the idea that in order to conserve heat in your house it is necessary only to build the walls soundly. The windows and doors lose much more heat than the walls. Everybody has noticed how in cold weather the wind blows in around the edges of the window. As the building ages the windows become more loose.

Cooling of the air in your rooms from this cause can be avoided by putting on approved weather stripping or well-fitted storm sash. The efficiency of both storm sash and weather stripping has been clearly shown. The effect of storm sash is more especially to save loss of heat across the window glass. Everybody knows that in very severe weather pulling down the shades will help to keep the rooms livable and that is the way the storm sash acts.

Storm Sash Urged to Keep Home Livable

Do not get the idea that in order to conserve heat in your house it is necessary only to build the walls soundly. The windows and doors lose much more heat than the walls. Everybody has noticed how in cold weather the wind blows in around the edges of the window. As the building ages the windows become more loose.

Cooling of the air in your rooms from this cause can be avoided by putting on approved weather stripping or well-fitted storm sash. The efficiency of both storm sash and weather stripping has been clearly shown. The effect of storm sash is more especially to save loss of heat across the window glass. Everybody knows that in very severe weather pulling down the shades will help to keep the rooms livable and that is the way the storm sash acts.

Storm Sash Urged to Keep Home Livable

Do not get the idea that in order to conserve heat in your house it is necessary only to build the walls soundly. The windows and doors lose much more heat than the walls. Everybody has noticed how in cold weather the wind blows in around the edges of the window. As the building ages the windows become more loose.

Cooling of the air in your rooms from this cause can be avoided by putting on approved weather stripping or well-fitted storm sash. The efficiency of both storm sash and weather stripping has been clearly shown. The effect of storm sash is more especially to save loss of heat across the window glass. Everybody knows that in very severe weather pulling down the shades will help to keep the rooms livable and that is the way the storm sash acts.

Storm Sash Urged to Keep Home Livable

Do not get the idea that in order to conserve heat in your house it is necessary only to build the walls soundly. The windows and doors lose much more heat than the walls. Everybody has noticed how in cold weather the wind blows in around the edges of the window. As the building ages the windows become more loose.

Cooling of the air in your rooms from this cause can be avoided by putting on approved weather stripping or well-fitted storm sash. The efficiency of both storm sash and weather stripping has been clearly shown. The effect of storm sash is more especially to save loss of heat across the window glass. Everybody knows that in very severe weather pulling down the shades will help to keep the rooms livable and that is the way the storm sash acts.

Storm Sash Urged to Keep Home Livable

Do not get the idea that in order to conserve heat in your house it is necessary only to build the walls soundly. The windows and doors lose much more heat than the walls. Everybody has noticed how in cold weather the wind blows in around the edges of the window. As the building ages the windows become more loose.

Cooling of the air in your rooms from this cause can be avoided by putting on approved weather stripping or well-fitted storm sash. The efficiency of both storm sash and weather stripping has been clearly shown. The effect of storm sash is more especially to save loss of heat across the window glass. Everybody knows that in very severe weather pulling down the shades will help to keep the rooms livable and that is the way the storm sash acts.

Storm Sash Urged to Keep Home Livable

Do not get the idea that in order to conserve heat in your house it is necessary only to build the walls soundly. The windows and doors lose much more heat than the walls. Everybody has noticed how in cold weather the wind blows in around the edges of the window. As the building ages the windows become more loose.

Cooling of the air in your rooms from this cause can be avoided by putting on approved weather stripping or well-fitted storm sash. The efficiency of both storm sash and weather stripping has been clearly shown. The effect of storm sash is more especially to save loss of heat across the window glass. Everybody knows that in very severe weather pulling down the shades will help to keep the rooms livable and that is the way the storm sash acts.

Community Building

Builders Now Insist on Proved Materials

According to the index number compiled by a large New York trust company, American homes are costing more each year. While the average cost for apartment houses is only a little over the 1921 mark, the index number for private houses shows an average rise from 100 in 1921 to 121.6 in 1927.

Part of this increase at least is due to education in materials, which has convinced many house builders that a low first cost does not prove that cheap stuff is not more expensive in the end. An architect, writing anonymously, protested recently in an advertising magazine that his labors were made more difficult because men and women who sought his services were already sold on specified brands of lumber, paints, varnishes, shingles, sash, wallboard, plumbing, plaster, screens, hardware and all the fixtures to be used in their houses.

"No longer," he complained, "is the architect the final arbiter. Practically everything which enters into the building of a house is advertised to the consumer, and he is accepting the invitation to look things over."

In many cases, this architect found, the client or his wife was sold on a product which meant additional expense, but so thoroughly had advertising done its work that no substitute was acceptable.

Fortunately few architects have this feeling, as the large majority welcome clients who have some knowledge of materials. They know such knowledge gives protection and makes it easier for them to give clients better houses.

Property Values Held by Unity of Purpose

Every growing city has witnessed the gradual and seemingly irresistible decline of once high-class neighborhoods, sometimes because of the advance gains for property holders, but often with no such developments or prospects, and lapse of a purely residential section from a once high estate is due to the attractiveness of newer additions with more modern houses and better planning. To some extent such recession will continue.

But if, through a neighborhood policy, consistent remodeling and modernization could be followed to keep measurable pace with newer districts, values might be conserved, if not advanced. There would be no sense in modernizing a single dwelling in a declining district; the policy would have to be general. Hence the need of organization and direction.

Consider Home Location.

There is nothing more important in the selection of a new home than its location. This is proved in the fact that expensive houses are generally constructed in choice locations, while lower-priced dwellings grace lots that are less costly. Of course, there are exceptions to this rule.

Electric Lamp Progress

In 1900 it was said that the incandescent lamp with carbon filament was so perfect a device that it could never be much improved. It was at about that date that industrial research was inaugurated in the electrical industry. Since then the efficiency of the incandescent lamp has been approximately quadrupled, and the great increase in the intensities of artificial lighting made possible by the cheaper light. The new applications created by the new lamps have had a far-reaching effect on our industrial prosperity.

"Phantom Ship" Uncanny

German scientists are taking great interest in the demonstration on Amerssee lake near Munich of an unmanned mystery boat. It is a motor launch, which, on receipt of a certain signal from the station, immediately returns to shore in a straight line. The transmitter is mounted on another ship; the boat can be towed by wireless and the distance between it and the towboat can be adjusted at will. A large doll of uncanny appearance fastened with its hands to the steering wheel caused the natives to nickname the craft the "Phantom Ship."

Record Birth of Lambs?

Five lambs at a birth is the unusual record established by a cross-bred Rambouillet-Cotswold ewe owned by George Rust, of Victor, Idaho. Twin lambs are common, triplets occasional; but more than that is very unusual according to J. E. Nordby, of the University of Idaho, who reports the occurrence in the Journal of Heredity. The lambs were permitted to remain with their mother for a few days, after which three were removed and reared as bottle lambs.

Popular Word Study

The period in world history known as the dictionary epoch refers to the great interest that is now being taken in living foreign tongues as well as in our own. Cross-word puzzles, too, have stimulated the study of words.

She Remembered

Father (of popular daughter)—That young man seems to take a long time to say good night.
Mother (wearily)—Men haven't changed much.—Capper's Weekly.

For Colds -

How many people you know end their colds with Bayer Aspirin! And how often you've heard of its prompt relief of sore throat or tonsillitis. No wonder millions take it for colds, neuralgia, rheumatism; and the aches and pains that go with them. The wonder is that anyone still worries through a winter without these tablets! They relieve quickly, yet have no effect whatever on the heart. Friends have told you Bayer Aspirin is marvelous; doctors have declared it harmless. Every druggist has it, with proven directions. Why not put it to the test?

Aspirin is the trade mark of Bayer Manufacture of Monocetatechloride of Salicylicacid

ASPIRIN

Cuticura Ointment
Pure, Sweet and Dainty

A most effective super-creamy emollient for the relief of itching, burning, scaly affections of the skin, for eczema and dandruff.

A remarkably successful treatment for fifty years, in combination with Cuticura Soap, for softening and soothing the skin and preserving the natural beauty of the hair. A highly developed and dainty requisite for the toilet.

Sold everywhere. Ointment 25c and 50c. Soap 25c. Talcum 25c. Sample each free. Address: "Cuticura," Dept. B5, Malden, Massachusetts.

Drop in Temperature Explained by Culprit

Little Walter Bowes, of Highland Park, takes life very seriously for a small chap and when anything goes wrong he manages to contrive some logical explanation therefor. One day recently he accompanied his mother when she went to call upon friends in Boyle Heights and while the customary gabfest was in progress Walter played on the porch, and while rutting back and forth, knocked down the thermometer.

This was a serious mishap but the little chap felt that it was his duty to report it and take his punishment, nevertheless, so he toddled into the house and stood at his mother's knee.

"What is it?" asked Mrs. Bowes, guessing from Walter's attitude that something was wrong.

"I was playing on the porch," said Walter, "and now the temperature is down."—Los Angeles Times.

Health Giving Sunshine

Marvellous Climate—Good Hotels—Tourist Camps—Splendid Roads—Craggy Mountain Views—The wonderful desert coast of the West

Write Geo. & Giffney

Palm Springs
CALIFORNIA

Why Suffer? For Results Try Osmun Points and Osmun Ointment for all stages of hemorrhoids (piles); combined treatment 22. Taylor & J. Pharmacy, 447-19, Jericho Turnpike, Bellerose, L. I.

Start Your Own Business; ball gum, salted peanuts, India ants; sold in penny vending machines; profitable out of doors business in spare time. Write Reliance's Automobile Exch., 127 W. 67th St., New York.

TALKING MOTION PICTURES CAPITAL wanted. Reputable producer desires capital for immediate production of series of all talking motion pictures, renowned director. Plans and story material on hand. Fully equipped sound studios, available wide open market. Write: **Box 318, Bayard, 60 Spring St., New York.**

\$25.00 PER WEEK MADE BY inexperienced salesmen who will follow our instructions. Write today. **WINDSOR MANUFACTURING CO.,** Knickerbocker Building, Baltimore, Md.

Rheumacide

Have you RHEUMATISM Lumbago or Gout?

Take RHEUMACIDE to remove the cause and drive the poison from the system.

"RHEUMACIDE ON THE INSIDE" AND "RHEUMACIDE ON THE OUTSIDE"

At All Druggists

Jas. Baily & Son, Wholesale Distributors Baltimore, Md.

Cherry-Glycerine Compound

For Old Sores
Hanford's Balsam of Myrrh

Money back for best bottle if not cured. All-India.

Parker's Hair Balsam

Removes Dandruff and Itching Scalp. Keeps Hair Soft and Silky. 50 cents by mail or at drug stores. Elmer's Chemical Works, Paterson, N. J.

Kremola

Prevents and relieves all forms of indigestion, flatulence, gas, and heartburn. 25 cents by mail or at drug stores. Elmer's Chemical Works, Paterson, N. J.