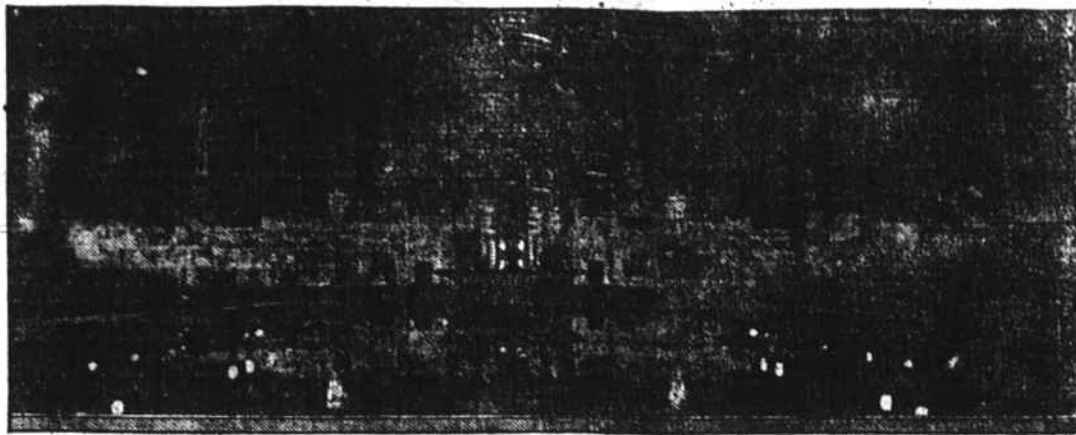
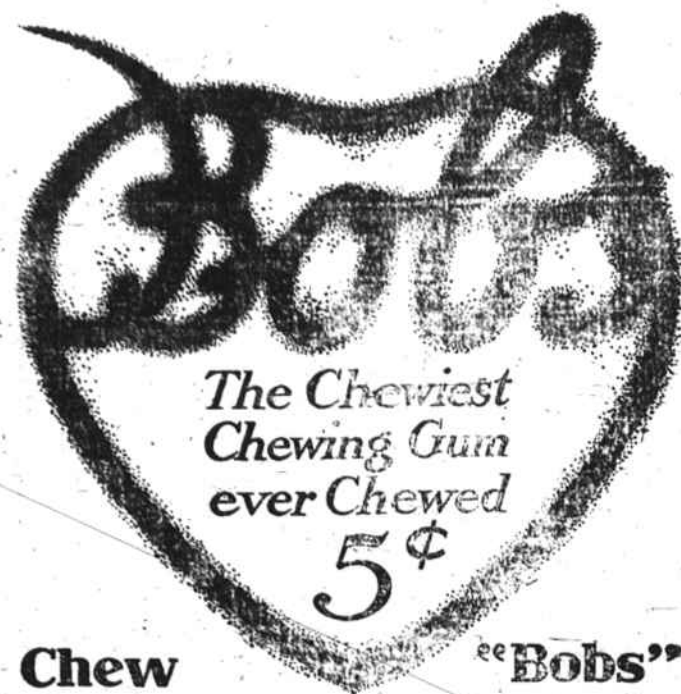


SUPERB NIGHT ILLUMINATION OF THE VAST PALACE OF HORTICULTURE



At night the vast glass dome of the Palace of Horticulture is played upon by rays of gigantic searchlight projectors set within the building. The globe, which is the largest hemispherical glass dome in the world and is one of the many marvels of the great Panama-Pacific International exposition, then assumes all the colors of the rainbow. This photograph shows the great building at night with the rays of the searchlights casting the sign of the Zodiac over its gleaming surface.



Chew "Bobs"  
5c. the packet or two "Bobs" for a cent at all the better stands and stores.

WHAT are they, Ernestine?

Why, little heart-shaped hunks of the chewiest chewing gum, all coated over with peppermint candy—a new chew to the gum and a new pep to the peppermint.

All Dealers Sell "Bobs"

Wood's Productive Seed Corns.

We offer all the best prize-winning and profit-making varieties. The high price at which corn is selling should encourage increased acreage and the planting of improved varieties of seed corn everywhere.

Wood's Descriptive Catalog gives full descriptions and information about all the best and most improved varieties, telling what to plant to make largest and most profitable crops.

We are also headquarters for Millets, Sorghums, Cow Peas, Soja Beans, Sudan & Rhodes Grass, and all Seasonable Seeds.

Write for Catalog and prices of my seeds required.

T. W. WOOD & SONS, SEEDSMEN, - Richmond, Va.

Land Sale.

Under and by virtue of the power of sale contained in that certain deed of trust executed by Joe Foot and wife to Ben T. Holden, Trustee, on the 3rd day of November, 1911, and duly recorded in Franklin county Registry, Book 162 at page 545, and in accordance with the authority therein conferred, the undersigned will sell at public auction to the highest bidder for cash at the Court House door of Franklin county, North Carolina, at about the hour of noon on the 5th day of April, 1915, the following real estate VIZ:

That certain tract of land on the Louisburg and Warrenton road about two miles north of the town of Louisburg, N. C., described as follows: Beginning at a rock, J. K. Spencer's corner in the Louisburg & Warrenton road, running thence North 35 yards to a rock, formerly known as R. G. Hart's corner; thence E. 140 yards to a rock R. G. Hart's corner thence S. 35 yards to J. K. Spencer's line thence W. along Spencer's line to the Louisburg & Warrenton road, the point of beginning, containing one acre, more or less and known as the Joe Foot home place This the 3rd day of March, 1915.

3-5-5t. Ben T. Holden, Trustee.

North Carolina. In Superior Court Franklin County. L. H. Kearney

vs. Notice of Execution sale Jas. F. Scott and Mrs. M. P. Scott.

By virtue of an execution directed to the undersigned from the Superior Court of Franklin county in the above entitled action, I will on Monday the 5th day of April, 1915 at, or about the hour of 12 o'clock M., at the Court House door in said county, sell to the highest bidder for cash, to satisfy said execution, all the right, title and interest which the said Mrs. M. P. Scott, the defendant herein, has in the following described real estate, to-wit: That parcel or tract of land lying and being in Franklin county, State of North Carolina, Franklinton township, and adjoining the land of the Raleigh & Gaston Railroad Company (now Seaboard Air Line Railway) and others and more fully described as follows: Beginning at Red Oak stump on the North side of the Mary Williams Mill pond near the dam; thence running up said Mill pond 173 poles to a stake in the Raleigh & Gaston Railroad Company's line (now Seaboard Air Line Railway) at Cedar Creek bridge; thence Northward along said railroad line 212 poles to a stake; thence West 17 3/4 poles to a stake; thence S. 77 E. 144 poles to the County road leading to Franklinton; thence S. 3 d. E. along said road 34 poles to a stake; thence West 44 poles to a stake; thence South 21 poles to a stake; thence East 45 poles to the road again; thence S. 3 d. E. along the said road 22 poles to a stake, Morris' corner; thence S. 13 d. W. along said Morris' line 80 poles to a stake; thence S. 1 1/2 d. E. 14 poles to the beginning containing 198 1/2 acres more or less, it being the same tract of land conveyed to the said Mrs. M. P. Scott by deed of Geo. Winston Exr. said deed being of record in Book 67 at page 391 Registry of Franklin county. This 4th day of March, 1915.

W. H. Allen, Sheriff of Franklin county.

Notice to Tax Payers That Have Not Paid Their Taxes

This notice is to the tax payers of Franklin County that have not paid their 1914 taxes. I have waited just as long as I can and am authorizing every deputy in the County to collect as they go. Now don't wait until you are levied on and then get mad with the Sheriff for trying to do his duty. Come on and pay and save us both further trouble. This notice is intended for everybody, white and black. Do not get mad with the County Treasurer for not paying your County order or school vouchers until you ave paid your taxes. 2-5-15 W. H. Allen, Sheriff.

Summary of Spring Tendencies Fabrics For the Suit, Waist and Afternoon Frock.

New York, March 18.—The buyers have returned from Paris. Almost all the Parisian dressmakers held their openings, and the buyers bought their models and hurried them to the steamers to get them well on their way before the maritime blockade should be enforced.

The New York openings occur immediately after the Parisian openings, merely giving the buyers and their booty a chance to arrive.

A brief summary of what is shown from Paris in our openings here in New York are:

Skirts are short and full, coats are long, three-quarters and very short. Narrow lower skirt section are placed beneath a wide overskirt which almost covers this section which is often of chiffon or lace—an old but effective feature of summer modes. Simplicity is the marked tendency in all these new gowns. The colors are less vivid and in a crude khaki, beige, sand and the numerous plum colors.

have three-inch belts of black velvet ribbon.

The high collar is very smart, but Paris has swerved a trifle from her allegiance to it and is wearing one which is high in the back and open in front. One very pretty collar which I noticed was a straight band of batiste buttoned in front with tiny buttons, and around the top, four triangular pieces of the same edged with narrow lave overlapping one another around the neck and falling over the high, boned band.

Lace and taffeta are combined a great deal for afternoon frocks. One charming dress of taffeta is four yards wide at the hem. The waist is tight, and from the waistline begins a band of the same color, which winds in spiral the same color, which winds in spiral effect around the hips and down—down to the hem, getting wider at each turn.

The suits being strictly tailored in their style require suitable materials. Serge, gabardine, gabardine voile, which is the highest-weight fabric obtainable for tailored suits, and a new fabric called grosgrain serge are among the smartest materials shown, as well as the most serviceable.

Linens in bright stripes, almost like the awning stripes of a year ago, are very smart for waists and novelty suits. Chiffon, voile organdy and handkerchief linen are the fabric, which are used mostly for the season's blouses, which are, of course, very popular owing to the tailored suits.

Silks come in serges and coverts, and are more than charming. The serge, of course, reminds one very forcefully of grosgrain in a finer quality but the covert is indeed a new departure and beautiful in its texture. A new satin called Georgette satin from its origination is being used a great deal for hats. It is a coarsely woven satin and comes in black, tan and mulberry, with ribbons to match. Speaking of ribbons and ribbon velvets there are beautiful flowered ribbons of all widths, checks that beggar description and velvet woven with checked blacks, all very gay and brilliant to go with the light clothes that are to have great popularity this season.



The New Basque Waist and Flared Skirt.

The high waistline and the normal one has taken the place of the moyen age line in many of the models, although the long line is often expressed in the girdle which comes down over the hips.

The short round and pointed basques are combined with fluffy, frilled skirts. In my illustration is shown a dress made of striped taffeta. The short waist is round, with a slight point directly in the front. The square Callot neck is a very much more becoming line at the neck than the straight Dutch or round neck. The full skirt is especially attractive and "summery" with ruffles, which dip in the front and back, and are about kneelength at the sides.

For some time the corset-makers have been making their corsets to curve in a little at the sides, and give the slightly smaller waist effect, and then they added a little to the height of the corset and added inserts of elastic to the backs and fronts. Some of the very newest models which are being sent out to try the market are undoubtedly pinching the fronts a trifle. It is hard to tell whether this is a forerunner of what we may expect in small waists, or merely a compromise in order to take care of such a contingency if it should suddenly come upon us.

Parisian sketches show a strong tendency toward straight girdles, which are worn at the normal waistline. These are more becoming to the waist than is "nipped" in a trifle than the one which is straight up and down. The dainty muslin frocks, which are already being made for summer,



Embroidered Crepe Accentuates the Beauty of Simple Lines.

on, and so the wheel of Fashion and those of the factories go on and on forever.

For the frocks for warm weather there are quantities of volles and crepes, in plain colors and figured which are stunning. In the illustration is a white crepe dress with an embroidered design in white, which marks the fabric off into diamonds. The simplicity of style by which it is developed is charming, indeed. The

waist is round and full with a narrow round yoke of lace. The three-quarter sleeves are finished with a frill of lace. The plain full skirt is finished at the bottom with a wide flouncing of crepe with a design which matches the material.

The materials for summer dresses are made with borders of color, and stripes and bars of embroidery on the plain white fabrics. There are embroidered flouncing of sheer crepe as well as narrow widths. Voile and marquisette are also for the foundation of embroideries.

Mull, embroidered with simple button-holed edge in blue and other colors, is used to make and to trim the charming period hats, poke-bonnets and quaint old-fashioned leg-horns, which are the novelties of millinery for summer.

The hats of tulle and chiffon with transparent brims are very smart and decidedly attractive. I saw one not long ago of tulle with a pleated crown and a brim of the tulle doubled. Particularly chic was the placing of the trimming which consisted of two quills running in opposite directions. Another stunning hat of tulle, chiffon, or black lace has a brim which is really a ruffe.

The hats are really stunning and are widely different, suited to many types. There is the small hat, the military hat, the turban and the large picturesque hat, usually of leghorn, and forced with a bit of figured chiffon or cretonne.

Mr. Bryan warns Americans to leave Mexico. Walking is good, you know.

Flowers FLOWERS Flowers

W. E. WHITE FURNITURE CO.

Agents For

J. L. O'Quinn & Company

Raleigh, N. C.

Special Attention Given to Funeral Designs.

Price List	
American beauty Roses \$5.00 to \$10.00	Calla Lily . . . . . \$2.50
White Roses . . . . . 2.00 to 2.50	Snapdragon Pink & White \$1.00 to 1.50
Pink Roses . . . . . \$2.00 to \$2.50	Hyacinth . . . . . 50c
Red Roses . . . . . \$2.00 to 2.50	Narcissus . . . . . 60c.
White & Pink Carnations . . . \$1.00	Sweet Peas per 100 . . . . . \$1.50
Red Carnations . . . . . \$1.00	Ferns, per bunch . . . . . 25c to 50c
Double Violets per 100 . . . . . \$1.50	Smilax, per yard . . . . . 25c
Orchids . . . . . \$12.00	Wedding Bouquets . . \$5.00 to \$25.00
Easter Lilies . . . . . \$2.50	Floral Designs . . . . . \$5.00 to \$25.00
Lily of the Valley . . . . . \$1.00	

Orders Filled Promptly

Flowers Arrive Twice Daily; on Afternoon and Evening Trains.

W. E. White Furniture Comp'y

LOUISBURG, North Carolina.