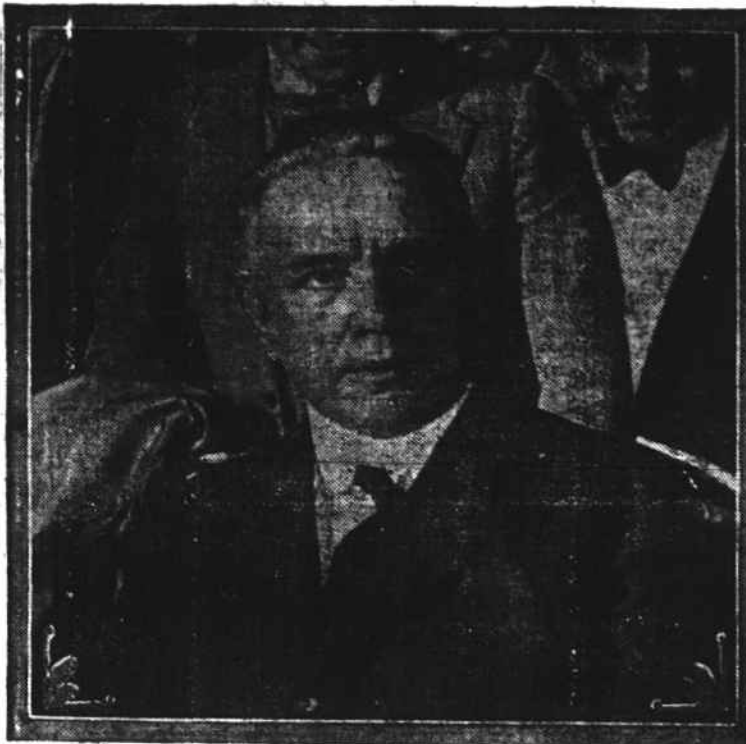


Thaw in Spotlight Once More



Wide World Photo.

Harry K. Thaw resumed his long fight for freedom from the Pennsylvania Hospital for Mental and Nervous Diseases, where he has been detained for the past seven years. It will be decided by the Philadelphia Court, before which he appeared, whether the slayer of Stanford White in New York City nearly eighteen years ago is or is not sane. Thaw's former wife, Evelyn Nesbit, is fighting against his release on behalf of her son Russell William Thaw. Photo shows Thaw at the hearing in Philadelphia.

JURY DECLARES THAW SANE AND CAPABLE OF HANDLING HUGE ESTATE

Counsel for Evelyn Nesbit, Divorced Wife Annonces: He Will File Motion for New Trial; Held Pending Appeal.

Philadelphia, April 22.—Harry K. Thaw was declared sane tonight by

the jury that had been hearing testimony to determine his mental condition. The jury declared him fully capable of looking after his estate. The jury deliberated seven hours. Thaw received the news at the Ritz-Carlton Hotel, where he had taken dinner with his mother. He declined to receive newspapermen, but said he might have a statement later regarding his plans for the future.

CO-OPS URGED TO NAME GOOD MEN

To The Editor: I am handing herewith several extracts from an editorial by Dr. Clarence Poe, as published in the Progressive Farmer, under date of April 12. We regard the suggestions set forth as timely and of such importance that we are asking you to publish same for the guidance of our members in the approaching election of a district director.

In deference to the memory that space is valuable, we are selecting only three of the most salient points, as treated in the editorial referred to above.

1. "Know what sort of director you vote for."

"The time has come for members to know what a director stands for, just as they should know a candidate for Congress or the legislature stands for, before they elect him."

"Members of a cooperative marketing organization are really members in a great cooperative democracy which we have set up to control the

sale of our products and which therefore vitally affects the welfare of our wives and families. And consequently as members it is not only our privilege but it is our duty to discuss policies and principles looking to wise, efficient, and economical control of our organization. We should do this just as earnestly and thoughtfully as members of our political democracy discuss policies looking to the wise, efficient, and economical conduct of national, state and county government."

2. "Members must know what is going on."

"If any cooperative marketing organization isn't democratic—democratic in the sense of being ruled by the people, responsible to them, and responsive to them—it is false and unsound and predestined to fail."

"As we said in our 'Cooperative Marketing Special' last September: 'One often hears the remark, "We must elect men we believe our very best as directors, and then if they don't manage right, we must elect new ones next time." But it must always be remembered that the only way the peo-

ple can tell whether or not directors are managing right is to know just what these directors are doing."

3. "Getting the right sort of directors."

"In connection with plans for getting the most capable men as directors of cooperative marketing organizations, just a few other things deserve to be said."

"One is that there should be in every case at least two strong men on the ballot for election as director. In Oklahoma last year we understand that in some districts no candidate was named to oppose the incumbent director. In our opinion, this is a serious violation of true cooperative principles and would very quickly ruin cooperative organizations. It might soon bring about a sort of ring rule, or rule of the "ins," making elections for directorships a mere sham and farce that would very quickly destroy all within the genuinely democratic character of cooperative marketing. Let's have a real effort to find the best man in every district."

The other idea we should like to reiterate is this: It is every bit as important to choose the right men to manage your cooperative association as it is to choose the right men to manage your government.

Your government taxes you, but every system of distributing and handling your farm products taxes you still more heavily. In other words, it is important to know (1) how a candidate stands—that his conviction and ideas about the management of cooperative marketing are sound and wise. But it is just as important to know that he has (2) character (which always includes courage) so that he may be trusted to stand squarely for what he professes, and (3) ability so that he may be a real force in helping make his ideas prevail."

We thank you.
CHAS. E. FULLER.
Kittrell, Route 1.

THE FIRST BAPTIST CHURCH, COLORED, DOING SPLENDID WORK

Saturday Was Conference Day—Largest Meeting in Its History—New High Record of 226 at Sunday School.

The First Baptist Church, colored, is doing splendid work at present. Recently, the active officers and members voted to hold its subsequent meeting in the new church site building, situated in the old Second Baptist church on South Main street. Saturday was the first conference day at the new acquisition but it brought more than 300 members, who were eager to participate in a meeting once more devoid of personalities and sensationalism.

However, the pastor, the Rev. G. W. Watkins, and the major part of the congregation did their business at the South Main Street site.

The Rev. G. W. Watkins, pastor of the church was interviewed relative to a report that he wanted the church moved so that he might get the more than \$5,000.00 from a local bank and move it to Raleigh, his home. Replying, the pastor declared that nothing is farther from the truth than this statement.

WANTED—Blacksmith and Horse Shoer to work at Bunn, N. C. Write A. W. PIPPIN, Bunn, N. C. 4-25-11

HAVE YOU EVER NOTICED THAT THE MERCHANT WHO SENDS IN THE COPY FOR HIS AD EARLY ALWAYS HAS THE NEATEST AD!

BEANS ARE RICH IN VITAMINES May Be Grown in Garden Throughout The Year.

Raleigh, April 23.—In North Carolina a continuous supply of beans may be had from the garden from early spring until the first frost in the fall. Beans are rich in vitamins which are essential to good health. Also green beans are bulky and some bulky foods should be eaten at every meal.

"To produce beans successfully in the home garden" says R. F. Payne, Extension Horticulturist for the State College of Agriculture "the soil should be broken deep and thoroughly pulverized with a harrow and drag. It should be well drained and contain plenty of organic matter. A sandy, loamy soil is preferred for the early crop and a heavier soil for the mid-

season and late crop.

"Stable manure should be applied to other crops in the rotation. A good high grade fertilizer, applied at the rate of 800 pounds per acre will give good results on most soils.

"Beans should be planted 1 1/2 to 2 inches deep on heavy soils and 2 to 3 inches deep on light soils. Snap beans should be 2 to 3 feet between rows and 3 to 4 inches apart in the row. Pole beans and pole limas should be 4 ft. between rows and 2 to 3 feet apart in the row. Bush limas should be 3 ft. between rows and 6 to 10 inches apart in the row.

"The best varieties of green podded pole beans are Horticultural Pole, Lazy Wife, and Kentucky Wonder. Green podded bush beans are Stringless Green Pod, Red Valentine, and Refugee. Wax podded pole beans are Golden Carmine and Golden Cluster.

Wax podded bunch beans are Pencil Podded Black Wax, Rustproof Golden Wax and Wardwell's Kidney Wax. Dwarf Lima are Improved Henderson's Bush Limas and Fordhook's Bush Limas. Pole limas are Early Leviathan and Sieva.

"The limas and pole beans should be planted after all danger of frost is over. Successive plantings of snap beans should be made to have a continuous supply throughout the season.

"Snap beans should be picked before the pods are full grown. Beans should not be picked while the vines are wet as this will spread anthracnose."

WHY WAIT TILL THE LAST DAY TO SEND THE COPY IN FOR AN ADVERTISEMENT WHEN THE AD MAN CAN GIVE YOU A MUCH BETTER JOB IF YOU SEND IT IN SOONER! DON'T FORGET IT.

SHOES

Back to the days of Greece and Egypt. This season's styles are, at least, very attractive. We have quite a showing.

SPECIAL

- Ladies Grey Suede "Jack Rabbit Sandal," neat foxing \$4.50
- Misses Grey Suede "Jack Rabbit Sandal," neat foxing \$3.50
- Childrens Grey Suede "Jack Rabbit Sandal," neat foxing \$3.00

Large Assortment Patents, Beige Suede, Whites and Staples for Ladies, Misses and Childrens. Buster Browns and cheaper.

MARKET SPECIAL FOR SATURDAY THE 26TH

- Swifts Premium Bacon in pound packages..... 35c

The McGhee-Joyner Co.

FRANKLINTON'S BIGGEST & BEST STORE

PHONE 47

PHONE 47

KLINE'S Economy Specials

Now For Another Big Week

ALWAYS GOOD MERCHANDISE AT KLINE'S, ALWAYS FAIRLY PRICED. YOU CAN BE SURE AT 100 CENTS VALUE FOR THE DOLLAR YOU SPEND HERE.

Splendid service; that means the customer is always right. Unfailing courtesy and truth in advertising. YOU'LL LIKE TRADING AT KLINE'S.

L. KLINE & CO. appreciates your trade and whether your trade is small or large we are always glad to serve you.

\$8.00 Value Tricoplaid Dresses
SPECIAL \$5.95

All new seasonable colors and styles, new trimmings, excellent quality.

\$12.50 Value Canton Crepe, Crepe DeChine Dresses
SPECIAL \$9.95

All new summer styles in new high shades, latest models, very fine quality, sizes to fit the Young Miss and the more conservative woman.

\$5.00 Value Children's Linen Dresses
Also mercerised shantungs in Copen, Tan, Brown and natural new styles
SPECIAL \$3.45

Hollywood Sandals
SPECIAL \$4.95

Season's newest creations in Patent leather and Grey Suede, low heel and sandal effect.

\$32.50 Value Powder Blue Suits
For Young Men

SPECIAL \$23.95

Newest thing for Young Men, powder blue, plain young Men's model, sizes 35 to 42.

\$23.95 Value Young Men's Sport Model Suits

SPECIAL \$19.95

Belted-back, patch model in Brown, Tan and plaid, all sizes 34 to 42.

Harry Berger Broadcloth Shirts
\$2.95

Imported broadcloth shirts, collar attached in Grey, Tan and White, sizes 14 to 17.

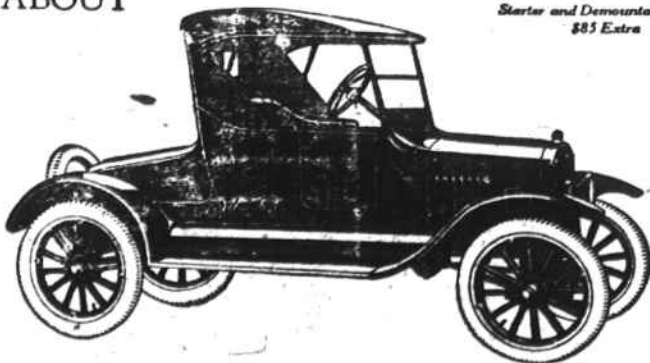
L. Kline & Company

"When Advertised or Seen Elsewhere It's Always Cheapest Here"

LOUISBURG,

NORTH CAROLINA

265
L.O.B. Detroit
Starts and Demountable Rims
\$85 Extra



The Lowest Priced Two-Passenger Car

The Ford Runabout is the most economical car for personal transportation known.

Priced lower than any other motor car, its maintenance and running expenses are in keeping with its present low cost.

To salesmen and others who average a high daily mileage in business, the Runabout has a special appeal both for its operating economy and its convenience in making city and suburban calls.

Ford Motor Company
Detroit, Michigan

See the Nearest Authorized Ford Dealer

Ford
CARS · TRUCKS · TRACTORS