

# Extra Special

1 Big Five Tablet  
1 Five Cent Pencil  
BOTH FOR 5c

Lot of Christmas Cards, Tags, Seals, Candies, Etc.

**BEASLEY BROTHERS**  
Next to Franklin Times      Louisburg, N. C.

## Christmas Gift Suggestions

LET us help you do your Christmas Shopping. Our stocks have been selected with careful regard for your requirements and offer a comprehensive range of quality merchandise. These are but a few suggestions:

- |                        |                          |                     |
|------------------------|--------------------------|---------------------|
| <i>for Women</i>       | <i>Ivory Toilet Sets</i> | <i>Waldman</i>      |
| Neckties               | Vanity Cases             | Belt Buckles        |
| Manic Bags             |                          | Fountain Pens       |
| Wrist Watches          | <i>for Men</i>           | Military Brushes    |
| Diamond Jewelry        | Eight Watches            | Smokers' Articles   |
| Brooches               | Fractal Jewelry          |                     |
| Beaded Bags            | Watch Chains             | <i>for the Home</i> |
| <i>for Young Women</i> | Cuff Links               | Silverware          |
| Lavallines             | Umbrellas                | Parcolator Sets     |
| Morosity Bands         | Leather Novelties        | Thermos Sets        |
| Brooches               | <i>for Young Men</i>     | Cut Glass           |
| Wrist Watches          | Sung Watches             | Clocks              |
|                        |                          | Lamps               |

Only a visit to our store can give you a full conception of countless, desirable articles we offer for your selection. The fairness of our prices will please you.

**W. D. LEONARD**  
Jeweler      Louisburg, N. C.

## A Few Christmas Suggestions For Careful Shoppers

- |                                   |                                     |
|-----------------------------------|-------------------------------------|
| Assorted Handbags..... \$1.99 ea. | Baby Carriage clasps -- 50c pr      |
| Bedroom Slippers 85c to \$1.50 pr | Infants sets ---- 50c to \$1.00 set |
| Gem-Dandy Garter 29c to 50c pr    | Azurea dusting powder 95c box       |
| Box Stationery... 25c to 55c box  | Coty powder ..... 95c box           |
| Baby Blankets \$1.00 to \$1.75 ea | Coty's compacts ..... 95c ea        |

Besides the above specials we have a varied and beautiful line of hose, towels, handkerchiefs, luncheon sets, knitted goods, stamped goods, linens, etc., suitable for Christmas gifts. Also the white and colored tissue papers, ribbons and cord for making your packages attractive. Come in before you buy.

## The Ladies Shop

LOUISBURG,      NORTH CAROLINA  
Next Door to Farmers & Merchants Bank

### MORTGAGE SALE OF LAND AND PERSONAL PROPERTY

By virtue of the power of sale contained in that mortgage deed made by Bonnie D. Bunn, and husband Percy R. Bunn, to the First National Bank of Spring Hope, N. C., dated April 12, 1924, recorded in Book 254, page 426, Franklin Registry, default having been made in the payment of the debt thereby secured and demand for payment made by the holder of said indebtedness, the undersigned will on **MONDAY, DECEMBER 28, 1925** at the Noon Recess of Court at the Courthouse door, in Louisburg, N. C., offer for sale at public auction, to the highest bidder for cash, the following described real estate:

That tract of land and dwelling and buildings thereon situate near Justice, Franklin County, North Carolina, more particularly described as follows: Beginning at a red oak stump, J. L. Bowden's and J. C. Wholes' corner, running S 15 poles, 4 links to a stake in Wholes' line; thence S 7 1/2 E 80 poles 17 links to a white oak. June 1924 and J. M. Allen's corner on the

Louisburg-Spring Hope Road; thence along said road North 26 1-2 poles to a stake on said road; thence S 87 W 81 poles to the beginning, containing 11 acres, more or less.

And also the following personal property: Two tan colored mare mules bought of the W. H. Griffin Company, and one two horse Thornhill Wagon, and harness bought of W. H. Griffin Company.

This November 27, 1925,  
First National Bank of Spring Hope, N. C., R. Gordon Finney, Receiver, mortgagee.  
Wm. H. Ruffin, Attorney.      11-27-25

Dr. Hess' Stock and Poultry Tonic Will Tone Them To Stand the Winter Winds. Satisfactory Results Guaranteed by L. P. HICKS.      12-18-25

Yes, the Better Price For Country Produce is Paid by L. P. HICKS. 121525

If Your Bin is Filled With Robt. E. Lee Flour Your Christmas Cakes and Bread Will Satisfy the Fasteners. Sold by L. P. HICKS.      12-18-25

### SHOP EARLY, MAIL EARLY

The Post Office Department is now in the midst of its shop early, mail early campaign. All the officials of the Department, starting with Postmaster General New, are determined that the thousands of letter carriers and clerks employed by Uncle Sam are entitled and are going to have the very merriest and happiest Christmas day this year in their history.

With this end in view, the Postmaster General is urging on every man, woman and child in the United States the absolute necessity for shopping and mailing early and often. Only through the heartiest and most nation-wide cooperation on the part of the general public will the letter carrier and postal clerk be permitted to enjoy Christmas day with his family and his friends as all other American citizens will be doing.

Attention of the public is called to the fact that if you leave your Christmas shopping until the very last minute you get what other people have left. There is no selection of gifts from which to make your purchases.

And it is likewise true that if you put off your mailing until the very last minute, the congestion that always takes place at Christmas time will be bound to delay the prompt delivery of your gifts on the day intended by the sender.

To insure that your remembrances will be in the hands of your friends make your purchases early and turn them over to the employees of the postal service not later than December 19. By doing so you will be happy and those for whom they are intended will have nothing to interfere with their happiness and joy at Yuletide.

### A CHILD'S POEM DEDICATED TO THE CHILDREN OF FRANKLIN COUNTY

"Gobble, gobble, gobble,"  
Said a turkey to his mate,  
Next week is Christmas  
And my life they'll surely take,  
But I am not sorry,  
For I know the joy I'll give  
To the pretty little boys and girls  
That live upon the hill.  
And perhaps next year  
A son of mine  
Will surely take my place  
Upon the very platter  
That tomorrow I will grace.  
—FRANCES TONKEL.

Our Plum Pudding, Fruit Cake, Mince Meat and Cranberries, You Will Need Them for the Holiday Season, at L. P. HICKS.

Give her a Set of Aluminum Kitchen Ware, Floor Mop or a Pair of Scissors at L. P. HICKS.      12-18-25

### NOTICE OF SPECIAL TAX ELECTION

Upon petition duly endorsed by the governing school boards of at least a majority of the school districts within the special school taxing district, to be known as Gold Sand School Taxing District, said petition having been duly approved by the County Board of Education of Franklin County, it is ordered that an election be held in accordance with the provisions of Article 15, Part 7, Chapter One of "An Act to Amend the Consolidated Statutes and to Codify the Laws Relating to Public Schools" enacted by the General Assembly of North Carolina at its regular session in 1923, at which election shall be ascertained the will of the people within said special school taxing district whether or not there shall be levied a special annual tax of not more than fifty cents on the one hundred dollars valuation of property to supplement the public school fund, which may be apportioned to the proposed special school taxing district by the County Board of Education; and in case such special tax is voted it shall operate to repeal and abolish all school taxes heretofore voted in any local tax or special charter district located within the said special taxing district.

The said election shall be held on the 18th day of January, 1926, the polling place to be at Gold Sand School Building in said district. A new registration shall be made and A. S. Gupton is hereby appointed Registrar, and W. D. Puller and P. C. Carroll are hereby appointed poll holders in said election.

### BOUNDARIES AS FIXED BY THE COUNTY BOARD OF EDUCATION FOR SPECIAL SCHOOL TAXING DISTRICT KNOWN AS GOLD SAND

"Beginning at a point where the Alert-Henderson Road crosses the Franklin-Warren line to corner for Franklin, Warren, Nash and Halifax Counties; thence in a southerly direction along the Franklin-Nash line to a point where Cedar Rock-Gold Mine Townships line intersects said Franklin-Nash line, corner for the Cedar Rock-Cypress Creek Special Taxing District; thence in a westerly direction along the northern line of said Cedar Rock-Cypress Creek Special Taxing District as same now runs to a point where Sycamore Creek crosses the Halifax Road; thence westwardly along said Halifax Road to the southwestern corner of the Moulton Hayes School District in the Louisburg Graded School District line; thence in a northerly direction along the western boundary line of the Moulton Hayes School District to the old O. Z. Edwards mill; thence about north in a straight line to the point of the beginning."

The registration books shall be open from the 13th day of December, 1925, to the 9th day of January, 1926, and the Registrar will have said books at the said polling place on each Saturday during said period from the 12th day of December, 1925, to the 9th day of January, 1926.

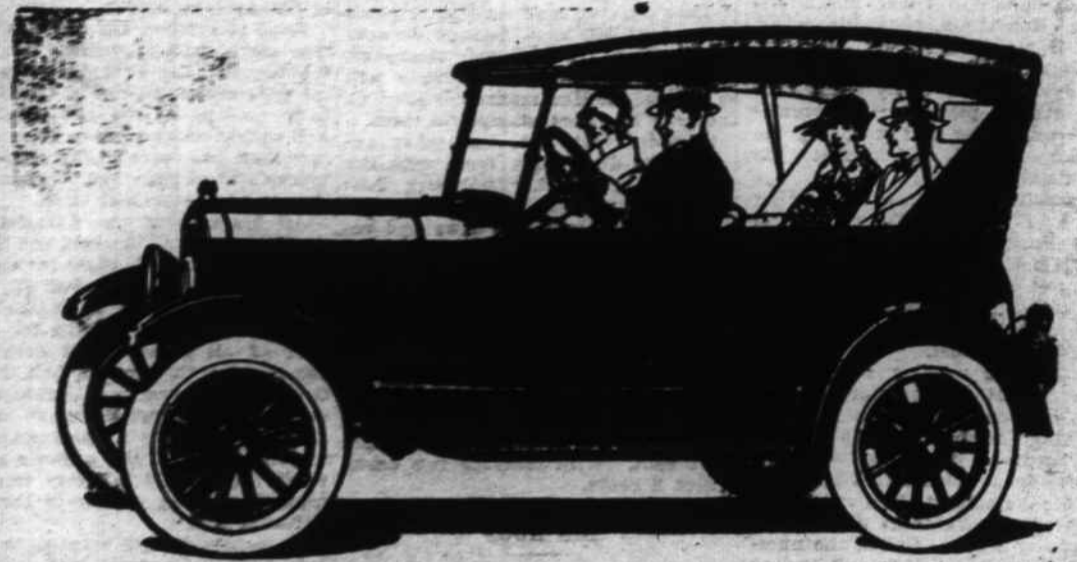
By order of the Board of County Commissioners, this 7th day of December, 1925.

Attest  
S. C. HOLDEN, Clerk  
ARTHUR STRICKLAND,  
Chairman.

# ONLY ONE WEEK LEFT

TO GET THE

**Ford**  
THE UNIVERSAL CAR



YOU GET A FREE CHANCE AT THE FORD WE ARE GOING TO GIVE AWAY

Saturday, December 26th

at 4:30 P. M.

with every dollar you spend.

YOU MAY BE THE LUCKY ONE

As a special inducement to make the last our best week we have marked every article in the store to the lowest prices of the season.

Values Unequaled Anywhere

You too will be surprised at the values we offer.

# L. Kline & Co.

INCORPORATED

LOUISBURG, N. CAR.