



1926 JANUARY 1926 calendar grid

1926 FEBRUARY 1926 calendar grid

1926 MARCH 1926 calendar grid

1926 APRIL 1926 calendar grid

1926 MAY 1926 calendar grid

1926 JUNE 1926 calendar grid

1926 JULY 1926 calendar grid

1926 AUGUST 1926 calendar grid

1926 SEPTEMBER 1926 calendar grid

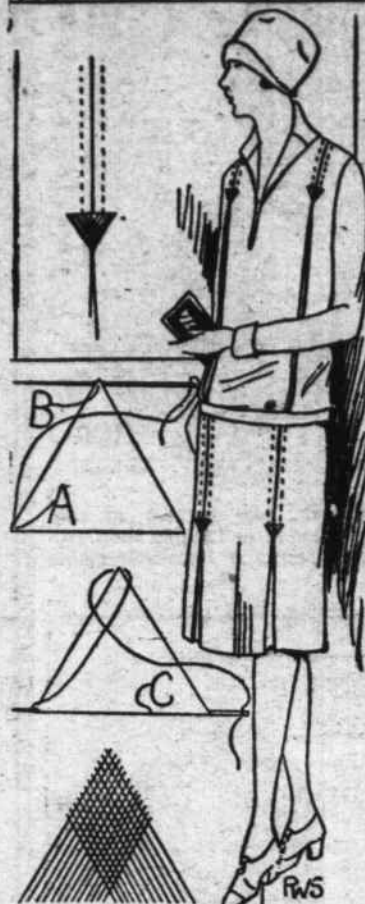
1926 OCTOBER 1926 calendar grid

1926 NOVEMBER 1926 calendar grid

1926 DECEMBER 1926 calendar grid

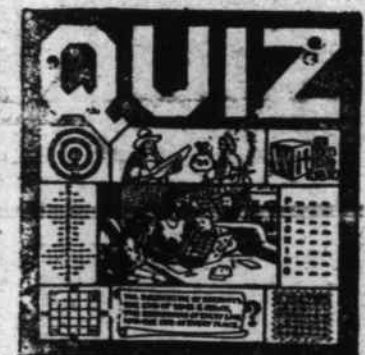
Practical Instructions in HOME SEWING

By Ruth Wyeth Spears



EMBROIDERED ARROWHEADS

Cut a little triangular shape piece of cardboard to use as a guide in marking. After marking around the arrowhead bring the thread through at the lower left hand corner of the triangle as shown at A in the sketch. Then short straight stitch, under the point of the triangle at B. Next take a long stitch at the base as at C. For this stitch bring the needle out as near as possible to the place where the thread was first brought through. Take a stitch at the top of the triangle just below the first stitch and another at the base bringing the needle in and out just inside the previous stitches. Continue until the entire space is filled in as shown in the sketch of the finished arrowhead.



Editor's Note: Through special arrangement with The Educational Book Co. N. Y. this newspaper now offers its readers this interesting feature "QUIZ" being extracts from that book, endorsed by Eugene C. Gilmer, Director of Extension Activities, New York Board of Education. These puzzles will be found intellectual as well as instructive.

Puzzle No. 23 1 2 3 4 5 6 7 8 9 0 Arrange these figures so they form two multiplications, and the product in both cases to be the same.

Puzzle No. 24 How is the best way to make a cat at last?

Puzzle No. 25 Charles Dickens' Rebus Letter. "Akleb Scheu."

Dear "Davia Pfidleerpe": Thank you very much for sending me "Hitcasmar Distrse." Could you lend me "A Iedhls Helytor fo Gelmadn?" In these "Dhar Mitse," I cannot obtain it. I met "Uy Tlamu Defirn," "Lervoi teiw," yesterday; he was with "Yabarbn Derug," the "Culnometcmral Llatreva." Did you know that "Tillet Rldrot" has been turned out of "Het Dlo Utyicorsi Epos" and "Medboydan Om," is written over the door? Your friend "Tumr i Huzltiew" has "Tager Xtpatol-cosm" about his book "A eatl fo wto Sictia." Have you heard about "Eht Ymytsefo Wnedi Ddoor?" He is said to have stolen several copies of "Cwicksi Rappse," and "Katschee yb Ozb."

Much love from: "HLANCOS KYLINGERY"

Solutions of Last Week's Puzzles table with numbers and calculations.

Send your answers to the editor. The first five solutions received in each puzzle will receive a prize. The first winner has obtained 100 credits & will be entitled to a "QUIZ CLUB" button or pin. 100 credits will entitle you to receive an extra prize and also have his name printed on the next issue.

FOR FIRST CLASS JOB PRINTING PHONE 283

No Worms in a Healthy Child All children troubled with Worms have an unhealthy color, which indicates poor blood, and as a rule, there is more or less stomach disturbance. GROVE'S TASTELESS CHILD TONIC given regularly for two or three weeks will cleanse the blood, improve the stomach, and act as a general strengthening tonic to the whole system. Nature will then throw off or digest the worms, and the child will be in perfect health. Pleasant to take. 60c per bottle.

MORTGAGE SALE OF LAND AND PERSONAL PROPERTY

By virtue of the power of sale contained in that mortgage deed made by Bonnie D. Bunn, and husband Percy R. Bunn, to the First National Bank of Spring Hope, N. C., dated April 12, 1924, recorded in Book 254, page 426, Franklin Registry, default having been made in the payment of the debt thereby secured and demand for payment made by the holder of said indebtedness, the undersigned will on MONDAY, DECEMBER 28, 1925 at the Noon Recess of Court at the Courthouse door, in Louisburg, N. C., offer for sale at public auction, to the highest bidder for cash, the following described real estate:

That tract of land and dwelling and buildings thereon situate near Justice, Franklin County, North Carolina, more particularly described as follows: Beginning at a red oak stump, J. L. Bowden's and J. C. Wheelers' corner, running S 18 poles, 4 links to a stake in Wheelers' line; thence S 87 1-2 E 80 poles 17 links to a white oak, June Cope and J. M. Allen's corner on the Louisburg-Spring Hope Road; thence

along said road North 26 1-2 poles to a stake on said road; thence S 87 W 81 poles to the beginning, containing 11 acres, more or less.

And also the following personal property: Two tan colored mare mules bought of the W. H. Griffin Company, and one two horse Thornhill Wagon, and harness bought of W. H. Griffin Company.

This November 27, 1925. First National Bank of Spring Hope, N. C., R. Gordon Finney, Receiver, mortgagee.

Wm. H. Ruffin, Attorney. 11-27-25

The above sale was continued to Monday, January 4th, by consent of all parties concerned.

This December 28th, 1925. First National Bank of Spring Hope, N. C., R. Gordon Finney, Receiver, mortgagee.

Wm. H. Ruffin, Attorney. 1-1-11

NOTICE OF SALE OF AUTOMOBILE UNDER MECHANIC LEIN

H. G. Ruth will take notice that under and by virtue of section 2017 of the Revisal of 1915 of North Carolina and the lein thereby given to

mechanics for repairs on personal property the undersigned will on Monday, February 1st, 1926, at Court Square, Louisburg, N. C., at about the hour of 3 o'clock p. m., offer for sale to the highest bidder for cash that Willis Knight touring car, motor number 89,338 placed by him for repairs and storage, with the undersigned and that sale will be made to pay the repairs thereon and storage.

This January 1st, 1926. BECK'S GARAGE R. C. Beck, Prop'r. 1-1-26

FARM FOR RENT

I have a two-horse farm near Flat Rock Church, adapted to cotton and tobacco, good dwelling and outhouses, for rent for 1926. Apply at once to Mrs. R. J. Conyers at Kittrell, R. T. Harris at Royal, or to F. R. CONYERS, Rocky Mount, N. C. 1-1-11

THE FRANKLIN TIMES should be in your home. If you are not a subscriber, be one. Send in your subscription and help us to boost for a better community.



WINNER THEATRE LOUISBURG, N. C. Program Week Jan. 4, 1925. Monday, Jan. 4 A James Cruze Production BETTY COMPSON, in "THE GARDEN OF WEEDS" ALSO A GOOD COMEDY. Tuesday, Jan. 4 "THE TEN COMMANDMENTS" By Cecil B. DeMille Special Price 10 and 25c Two Full Shows 7 and 8:45. Wednesday, Jan. 6 Conrad Nagel and Blanch Sweet, in "TESS OF THE DUBBERVILLES" ALSO A GOOD COMEDY. Thursday, Jan. 7 RUDOLPH VALENTINO in Rex Beache's "A SAINTED DEVIL" ALSO A GOOD COMEDY. Friday, Jan. 8, EDMUND LOWE in "KISS BERRIES" Riddle Rider Serial and Comedy. Saturday, Jan. 9 "RIDIN' MAD" Yakima Cornutt Western ALSO A GOOD COMEDY. ALSO TWO FULL SHOWS 7 and 8:30 P. M. ALSO MATINEE EVERY SATURDAY 2:00 P. M. Our Theatre is warmed up to a good average temperature with the Heatrola System. We will keep you warm.

Tonkel's Sale .. of .. LADIES COATS IS NOW AT FULL BLAST. We are making our last sacrifice of Ladies' Coats—every Coat in our Store to be sold at cost and below cost. We urge you to look over our stock and select your coat at your own price. We also have a brand new complete line of TOYS, DOLLS and all Holiday Goods. A. Tonkel's Louisburg, N. C. WHERE YOUR \$ BUYS MOST!!