

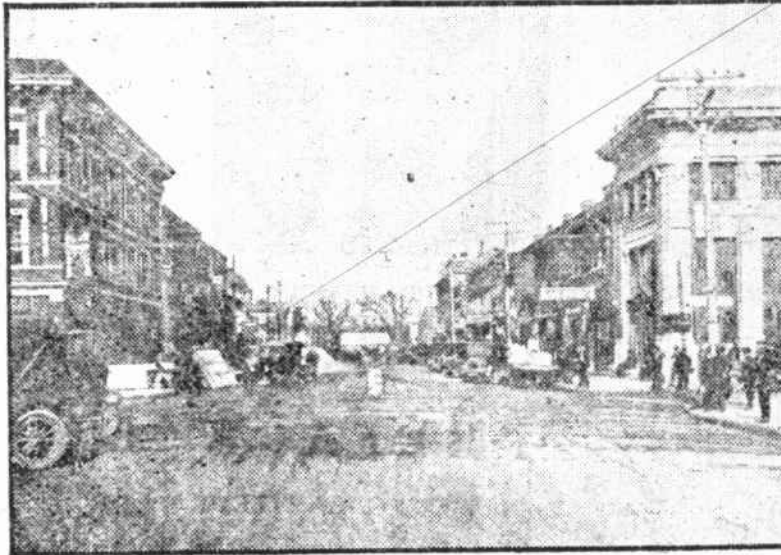
Smithfield, North Carolina

Industries

SMITHFIELD has the requisities for a real home town. Good government, thriving industries, good schools and churches, pure water, clean streets, good roads, opportunities for the rising generation, a progressive community spirit—all make for a splendid inducement to folks looking for a good town in which to live. Smithfield is the center of a fine farming section, and merchandising is a profitable industry. As a market for the produce of the farm, it offers the best advantages. For years it has been the only tobacco market in a county of 50,000 population, last year two auction warehouses and one co-operative warehouse being operated, selling approximately 4,000,000 pounds of the golden weed. Cotton buyers on this market last year purchased 7,500 bales of cotton besides that marketed through the co-operative association. Two cotton mills give employment to native labor and the town offers an attractive inducement to the establishment of other manufactories by giving exemption from town taxes for a period of ten years.

Healthful Location

SMITHFIELD is alert to health conditions. Scientific drainage of the town four years ago and the maintenance of systematic spraying has reduced malaria almost to a minimum. The town has an unusually low death rate. When one does need medical attention, however, a corps of physicians and a hospital with a successful surgeon provide adequate treatment.



A Business Scene

Civic Improvements

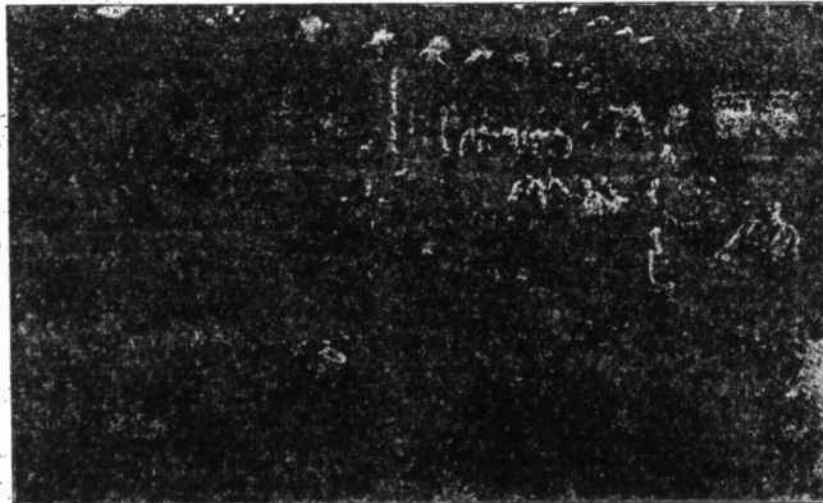
SMITHFIELD is more than a wide place in the road. Paved streets and sidewalks, electric lights and water-works give it a "city air." Neuse River, upon which the town is located, furnishes the water supply, the drinking water having an especially fine analysis from the state laboratories. Electric power to turn all sorts of machinery with splendid fire-fighting apparatus combine to give Smithfield an unusually low insurance rate, being 20% lower than the average town of its size.

Schools and Churches

SMITHFIELD has the best when it comes to schools and churches. Five churches, Methodist, Baptist, Presbyterian, Episcopal and Primitive Baptist, provide a religious atmosphere that no town can afford to be without. An accredited high school with a faculty of thirty gives its graduates opportunity to enter not only colleges of this State but any college in the Southern Association of Colleges without entrance examinations. Two modern, commodious brick buildings for the white school children and a fourteen-room brick structure for the negro children are ample for educational needs years to come.

Biggest Asset

Smithfield's biggest asset, however, is its people. Genial and kindly, they know how to make a stranger "one of them." Those who come to Smithfield temporarily want to stay. The citizens believe in their town. They believe in booster organizations. Besides a newspaper, a necessity in any progressive town, a Kiwanis Club that lives up to its motto, more than a hundred women organized into a Woman's Club and a Chamber of Commerce are continually on the alert to improve Smithfield.



Tobacco Warehouse Scene at Smithfield

Smithfield's Ambitions

SMITHFIELD is progressive. Smithfield wants more POPULATION, more INDUSTRY, more CAPITAL, more TRADE, more PROSPERITY. SMITHFIELD is ready to give the glad hand to citizens of the right sort. Smithfield has within a radius of fifty-two miles 450,000 people.

Other Advantages

SMITHFIELD is the county seat of one of the fifty best counties in the United States and has a court house second to none in North Carolina. It is located only twenty-eight miles from the State capital, a paved highway joining the two towns. Two main highways of the State, Route No. 10 that traverses the State from east to west, and Route No. 22 that goes through the State from north to south, intersect in this city. It is on the main line of the Atlantic Coast Line Railroad. A Building and Loan Association has just closed the most successful year of its history, having built on an average last year, a \$4,000 house every thirty days. Two strong banks furnish adequate banking facilities. One institution is a state bank with resources of \$385,000. This bank is only three years old and has the distinction of never having had to charge off a bad loan. The other, a national bank, is the oldest in the county and has a paid in capital stock of \$175,000. This is the largest bank for the size of the town in North Carolina.