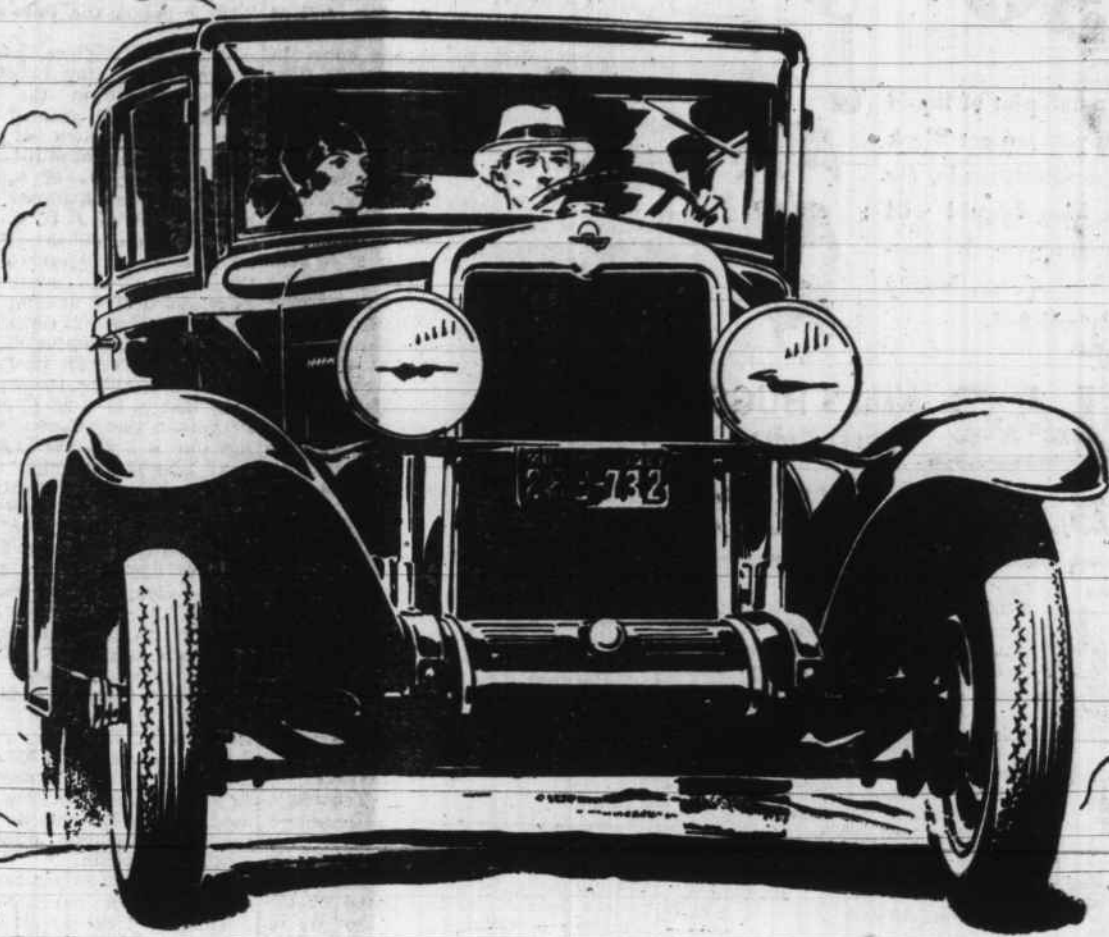


Drive the Chevrolet Six



- and learn what marvelous performance you can get in a low-priced car



The COACH
\$595

The ROADSTER.....	\$525
The PHAETON.....	\$525
The COUPE.....	\$595
The SEDAN.....	\$675
The Sport CABRIOLET.....	\$695
The Convertible LANDAU.....	\$725
The Sedan Delivery.....	\$595
The Light Delivery Chassis.....	\$400
The 1 1/4 Ton Chassis.....	\$545
The 1 1/4 Ton Chassis with Cab.....	\$650

All prices f. o. b. factory
Flint, Michigan

COMPARE

the delivered price as well as the list price in considering automobile values. Chevrolet's delivered prices include only reasonable charges for delivery and financing.

If you are one who has always believed that truly fine car performance can only be had in a high-priced automobile—come take the wheel of a Chevrolet Six and go for a ride!

Here, in the price range of the four and with economy of better than 20 miles to the gallon of gasoline, is offered a type of overall performance that will literally amaze you—

—marvelous six-cylinder smoothness that eliminates vibration and body rumble—power that takes you over the steepest hills—acceleration and speed that make every mile a delight—and handling ease and restful comfort that leave you refreshed at the end of the longest drive!

Emphasizing this outstanding six-cylinder performance are the beauty and safety of smart new bodies by Fisher. Styled by master designers whose art has lent distinction to some of the world's finest motor cars... and built of selected hardwood and steel—the strongest, safest and quietest combination of materials known to the body builders' craft—

—they represent, in every detail, an order of coachcraft never before approached in a low-priced automobile.

We cordially invite you to come in for a ride in this sensational car. Learn for yourself what smooth six-cylinder performance can now be secured in the price range of the four!

Louisburg Motor Company

MAIN STREET MOTOR CO., Franklinton, N. C.

A SIX IN THE PRICE RANGE OF THE FOUR