

### Uncle Jim Says



Specialists of the State College Extension Service have found that contour cultivation not only conserves valuable soil, but by saving water it also increases the chances of a full yield of crops per acre.

### Timely Farm Questions

Answered at State College

QUESTION: Does the feeding of a moist mash aid in egg production?  
ANSWER: There is little to be gained by feeding moist mash continuously through the year, but it has an important place in feeding laying hens during the summer months. It will stimulate production in laying hens from June until October by increasing the consumption of animal protein and producing an appetizing effect on the birds when egg production is subnormal. The best time to feed the mash is about two o'clock each day. Three pounds of the regular laying mash moistened with hot water or milk for each 100 birds will give excellent results.

QUESTION: When should I select tobacco plants for next year's seed?

ANSWER: Select the seed plants before the tobacco is topped. Select the plants that are typical of the variety planted with the leaves well spaced on the stalk. Bag the selected plants in 14 pound paper bags just before the first bloom opens to prevent cross-pollination. Prune the branches of the seed pod to three or four in order to give room for development under the bag and apply the bud worm bait to the seed pods before bagging. One plant will produce about one-half ounce of seed and, for best results, the plants should again be selected after the tobacco is matured.

QUESTION: How soon after shearing should sheep be dipped?

ANSWER: The sheep should be dipped from ten days to two weeks after shearing when all cuts made at shearing have healed. Usually one dipping is sufficient, but if any ticks, lice or mites are present, the dipping should be repeated ten days later to destroy any parasites that may have hatched from eggs since the first dipping. The treatment should be made in the morning of a warm sunny day so that the fleece will get thoroughly dry before night. Any standard-dip mixture will give good results if directions are followed.

#### SAFE TRAVEL

I've ridden on all kinds of autos and trucks, on single-foot ponies and bronchos that buck; on hand-car and coal-car, horse-cart and dray, on iceboat and hobsled, on sulky and sleigh.

I've ridden on trolley car, horse car caboose, sailboat and steamboat and tippy canoes; on Pullman, on flat-car, wagons of hay, on merry-go-rounds, even a one-hoss shay.

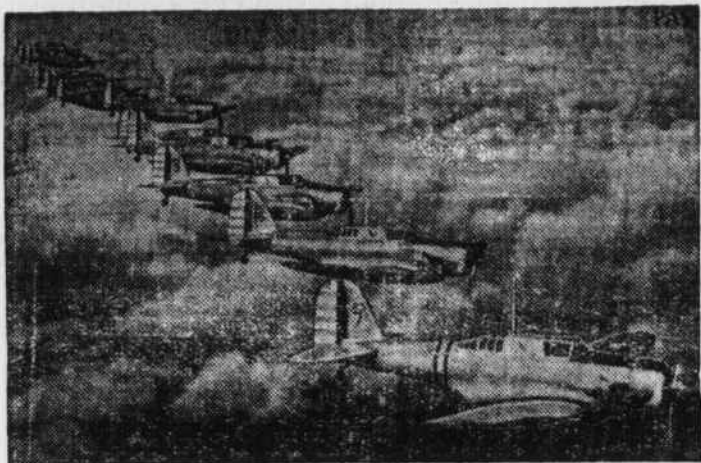
But the safest and sanest vehicle to ride is the kind opponents of Volstead deride; it's hard to stick on, but just recollect that the old Water Wagon seldom gets wrecked!

Baseball is 100 years old this year, and some of the umpires smell even older than that.

### STERLING SOAP CO.

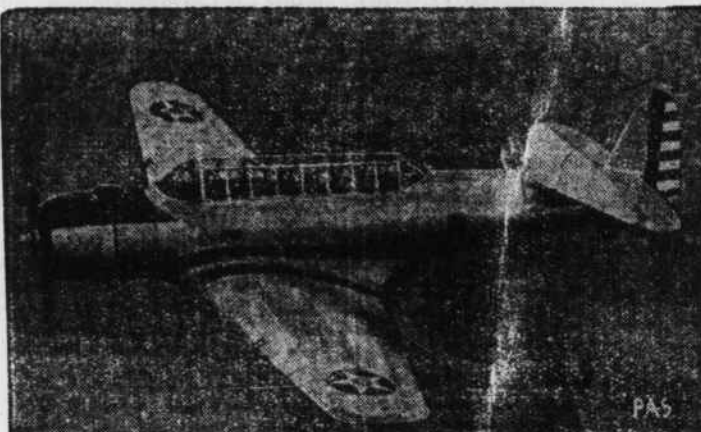
- Palmolive 3 BARS FOR 20¢
- Made with Gentle Olive Oil
- Palmolive Soap, 3 for . . . . . 20c
- Super Suds (for washing dishes) Regular size, 3 for . . . . . 27c
- Giant size, 2 for . . . . . 35c
- Con. Super Suds (washing dishes) Regular size, 3 for . . . . . 27c
- Giant Size, 2 for . . . . . 45c
- Giant Octagon Soap, 4 for . . . . . 19c
- Special Octagon Soap, 2 for . . . . . 5c
- Large Octagon Powder (3 for 14c)
- Special Octagon Powder, 2 for . . . . . 9c
- Octagon Cleanser, 2 for . . . . . 9c
- Octagon Granulated Soap, 2 for . . . . . 19c
- Crystal White Toilet Soap, 3 for . . . . . 14c
- Hollywood Toilet Soap, 3 for . . . . . 14c
- Octagon Toilet Soap, 3 for . . . . . 14c
- Box (Fumice) Soap, 2 for . . . . . 9c
- Universal Toilet Soap, 3 for . . . . . 14c
- Venus Toilet Soap, 3 for . . . . . 14c
- Sex Toilet Soap, 4 for . . . . . 16c

### U. S. Airmen in Maneuvers



MARCH FIELD, Calif.—A squadron of the 17th Attack Group, led by Major E. Kiel, executing an echelon formation of elements during a 350-mile combat training flight. The flight is part of the rigid training the Army Air Corps pilots are now receiving.

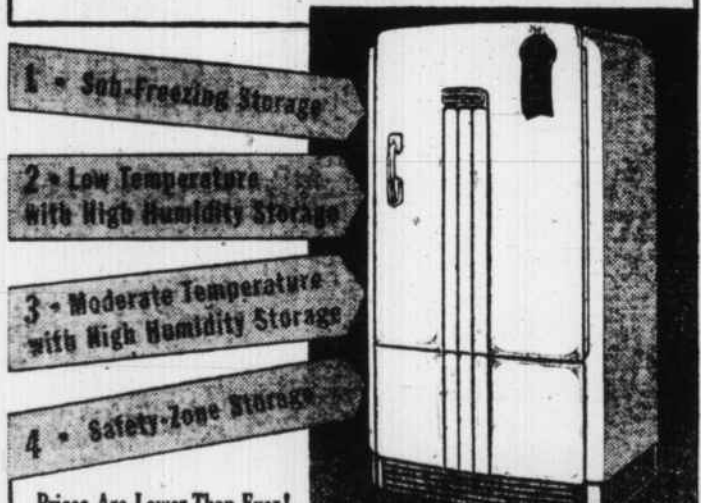
### Army's Newest Attack Bomber



DOWNY, Calif. . . . The Vultee YA-19, all metal attack plane, in its initial flight here prior to being delivered to the United States Army Air Corps. The low-winged monoplane is powered by a Pratt & Whitney "twin Wasp," 14 cylinder, radial-cooled engine. It carries a crew of three, and attains a speed in excess of 230 miles an hour. It is designed to carry 800 pounds of bombs and six machine guns.

Most people prefer to do their own worrying. It is both wiser and more tactful therefore, not to worry about them unless you are immediately concerned. It is a historical fact that one of the greatest booms in business in this country followed the greatest slash in federal spending in our history.

## Get the Inside Story on G-E Selective Air Conditions!



Prices Are Lower Than Ever!  
It's beautiful—it's thrifty—it's a bargain! Get the inside story on why more G-E refrigerators have been bought already this year than in any like period in General Electric history. G-E Selective Air Conditions place at your command different combinations of temperature and humidity that provide the most practical low-cost method of food preservation known today.

Get the Inside Story!  
**BROWN FURNITURE HOUSE**  
J. L. BROWN, Proprietor  
YOUNGSVILLE. N. CAROLINA

### GENERAL ELECTRIC

### But It's True



THE SHOES WORN BY THE PRESENT QUEEN ELIZABETH OF ENGLAND AT HER CORONATION COST \$14,000.  
THE CAMPAIGN ROAD OF SOUTH AMERICA HAS NO EYES AND NO MOUTH—IT TAKES IN FOOD THROUGH ITS PORES...  
THE LATE THELMA TODD—MOVIE ACTRESS ONCE LOST 314 POUNDS IN TWO DAYS!!

Miss Todd lost the weight by staying in steamrooms for 10 hours each day. Massaging and dieting did the rest. According to the terms of the bet, Mr. Haworth was to let his great toe-nails grow uncut for six months.  
Louisburg lady (on telephone)—I sent my little boy for two pounds of bananas, and you sent only a pound and half.  
JUMP  
The annual tonnage of beef graded according to Federal standards rose from 408,000,000 pounds in 1937 to 603,000,000 pounds in 1938, or an increase of 47.6 per cent.

Many a Man has made Money by spending it ---  
**FOR INSURANCE!**

See me for your hail, tornado, fire or automobile insurance.

**G. M. BEAM, Agent**  
(20 Years Fire Insurance Writing)

**PROMPT SHOE REPAIRS**

You get double value for your money when you have your comfortable old shoes repaired and resoled. Our modern equipment enables us to rebuild your worn shoes to give you genuine savings in added use and comfort.

**GANTT'S SHOE SHOP**  
East Nash Street      Louisburg, N. C.  
Sell Your Cotton and Tobacco in Louisburg

"Nazis beheaded two for spying," says a headline. What if other countries infested by Nazis were to follow the precedent?  
Poland would like to keep Germany out of her front hallway. She may put up an umbrella stand in the corridor.

**FURNITURE**  
*More Value for Your Money!*

Draperies, Rugs, Floor Coverings for your Spring Cleaning

Pieces of Furniture to change your room arrangements, New Suits and Porch Furniture. Call in and see our new designs and patterns.

**BOBBITT FURNITURE CO.**  
R. A. BOBBITT, Proprietor

**FIX UP YOUR HOME**

**GLIDDEN'S PAINTS**  
"TIME TESTED"  
Best Grade, \$2.00 Gal  
Semi-Paste After Mixing  
Utility, Gal \$1.39  
Ready-Mix. Paint 1

**Boat Paint - Caulking Compound**

**FOR RENT** ELECTRIC FLOOR SANDER & POLISHER

**AUTO TIRES**  
SPECIAL LOW PRICES  
450 - 21 TIRE -- \$5.25 --

**TIRE SALE**

**FISHING TACKLE**  
RODS . . . . . \$1.50  
REELS . . . . . 98c  
50 YD. LINES . . . . . 75c  
BAITS . . . . . 50c  
TACKLE BOXES. 49c  
COMPLETE LINE OF HEDDEN, CREEK CHUB, PFLEUGER, RODS, REELS AND BAITS.

**PLAY BALL!**  
Base Ball Gloves \$1.00  
Base Ball Bats . . . 75c  
Base Balls . . . 10-25-50c  
Base Ball Caps . . . 25c  
Base Ball Shoes. \$2.50

**TENNIS SUPPLIES**  
Tennis Rackets . . . . \$1.25  
Tennis Balls . . . . . 35c  
Racket Presses . . . . 50c  
Wright & Ditson Rackets and Balls

**FURNITURE**  
GLIDERS . . . . . \$15.00  
Metal Lawn Chairs . . \$2.98  
Beach Chairs . . . . . 98c  
9x12 Grass Rugs . . . \$2.75  
3 Pc. Bed Room Suites . . . . . \$29.95

**H. C. TAYLOR**  
Hardware & Furniture  
PHONE 423-1      LOUISBURG, N. C.

**THE HOUSE OF HAZARDS**  
By MAC ARTHUR

DAD INSISTS UPON GOING TO A MOVIE, BUT I KNOW HE WON'T KEEP HIS COAT COLLAR UP AROUND HIS NECK AND HE'LL TAUGHT CONTRACT MORE OF A COLD THAN I'VE HEARD NOW!

THE WHOLE PROBLEM IS AS SIMPLE AS A. B. C.

JUST SEE THAT DAD WEARS THIS TIE GRANDMA GAVE HIM FOR CHRISTMAS

I DON'T GET THE IDEA, BUT I'VE NEVER GONE WRONG YET FOLLOWING JUNIOR'S ADVICE.

DAD, IF YOU DON'T WEAR THIS TIE TONIGHT I'LL REFUSE TO GO OUT WITH YOU.

OH, TAKE IT AWAY! DON'T ASK ME TO PUD THAT HEINOUS THING ON

YEP MOM, IF I HAD TO WEAR A TIE LIKE THAT I'D KEEP MY NECK WELL COVERED TOO!

STERLING SOAP CO. Franklinton, N. C.